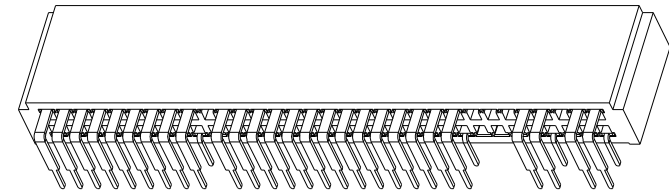
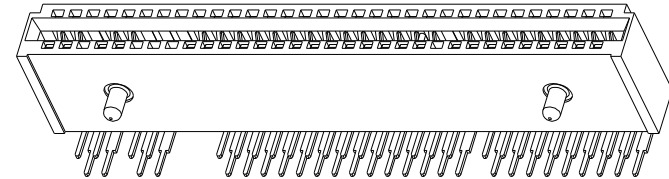


PRODUCT NO.

10053363-500LF

NOTES:

1. MATERIALS:  
HOUSING: HIGH TEMPERATURE THERMOPLASTIC, UL 94V-0 RATED, BLACK.  
TERMINAL: HIGH CONDUCTIVITY COPPER ALLOY.
2. PRODUCT PERFORMANCE SPEC. PER GS-12-259.
3. PACKAGE SPECIFICATION PER GS-14-937.
4. PART NUMBER 10053363-500LF MEETS EUROPEAN UNION DIRECTIVE AND OTHER COUNTRY REGULATIONS AS DESCRIBED IN GS-22-008. THE HOUSING WILL WITHSTAND EXPOSURE TO 260°C PEAK TEMPERATURE FOR 10 SECONDS IN A REFLOW SOLDER APPLICATION WITH A CIRCUIT BOARD.
5. MANUFACTURER'S NAME, P/N AND DATE CODE TO APPEAR ON THIS SURFACE AS PER GS-24-007.



rev	ecn no	dr	date
A	DG10-0139	Junon	2010-04-19
-	-	-	-
-	-	-	-
-	-	-	-
-	-	-	-
-	-	-	-

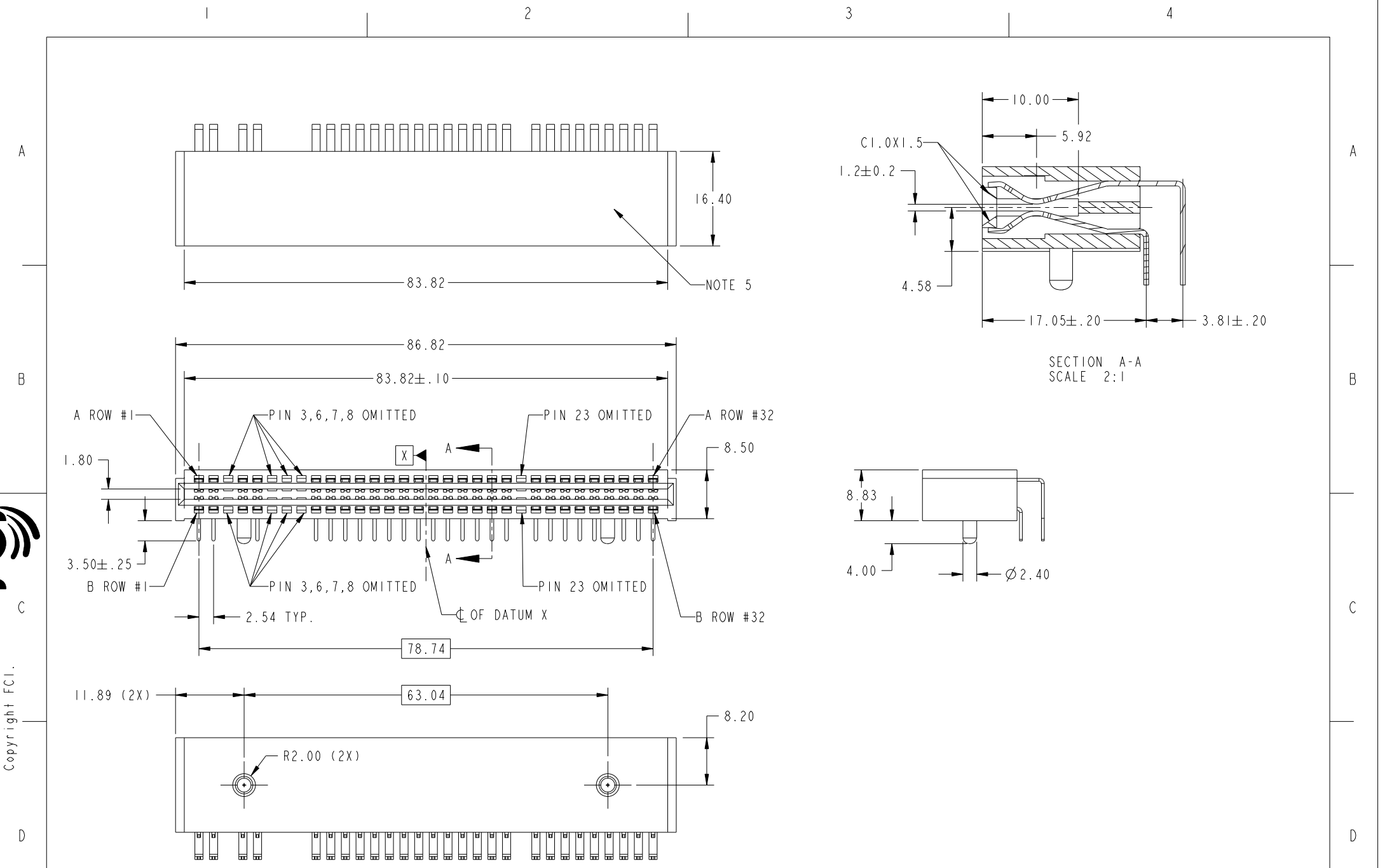
www.fciconnect.com			surface <input checked="" type="checkbox"/>	tolerance std	projection	MM
			TOLERANCES UNLESS OTHERWISE SPECIFIED			
Dr	JUNON HUANG	2010-04-15	ANGULAR	0.X ±0.30	size A4	Scale 1:1
Eng	JUNON HUANG	2010-04-15	LINEAR	0.XX ±0.15		
Chr	PM ZHENG	2010-04-16	0° ±2°	0.XXX ±0.08	ECN	*
Appr	JOSEPH HSIA	2010-04-19	Product family POWER EDGE CARD		Spec ref	*
			title 2X32P R/A TYPE CONNECTOR		dwg no 10053363-500	Rev. A
			ASSY WITH STAND-OFF		CUSTOMER	sheet 1 of 3

PDM: Rev-A


STATUS: Released

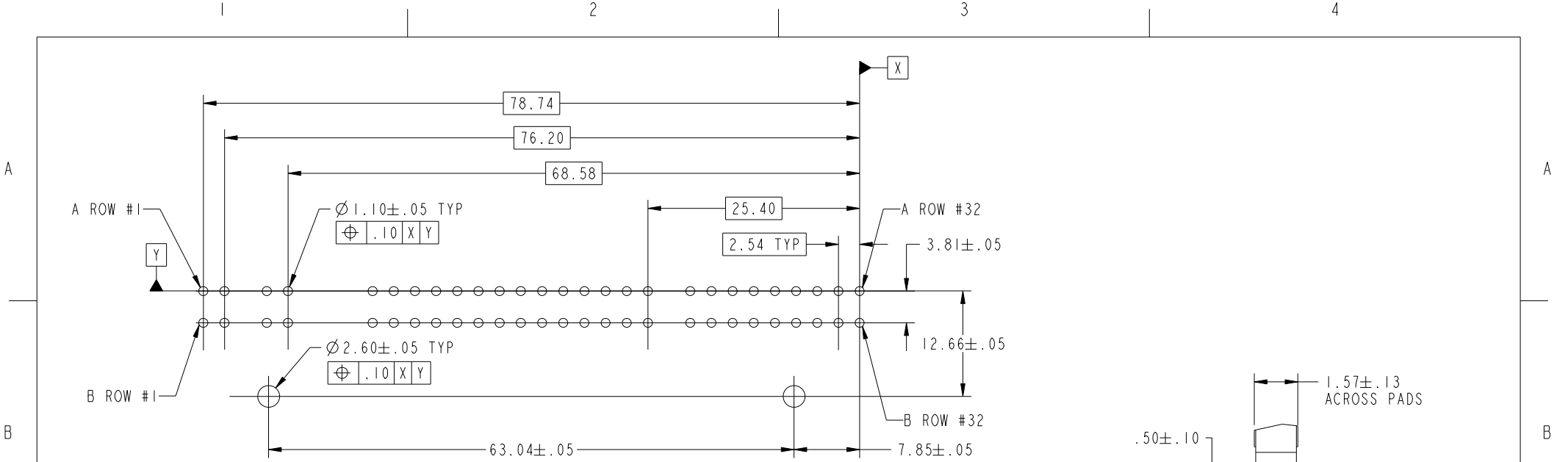
Printed: Dec 03, 2010



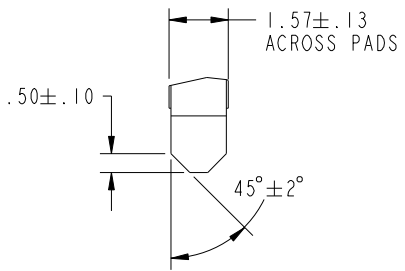


Copyright FCI.

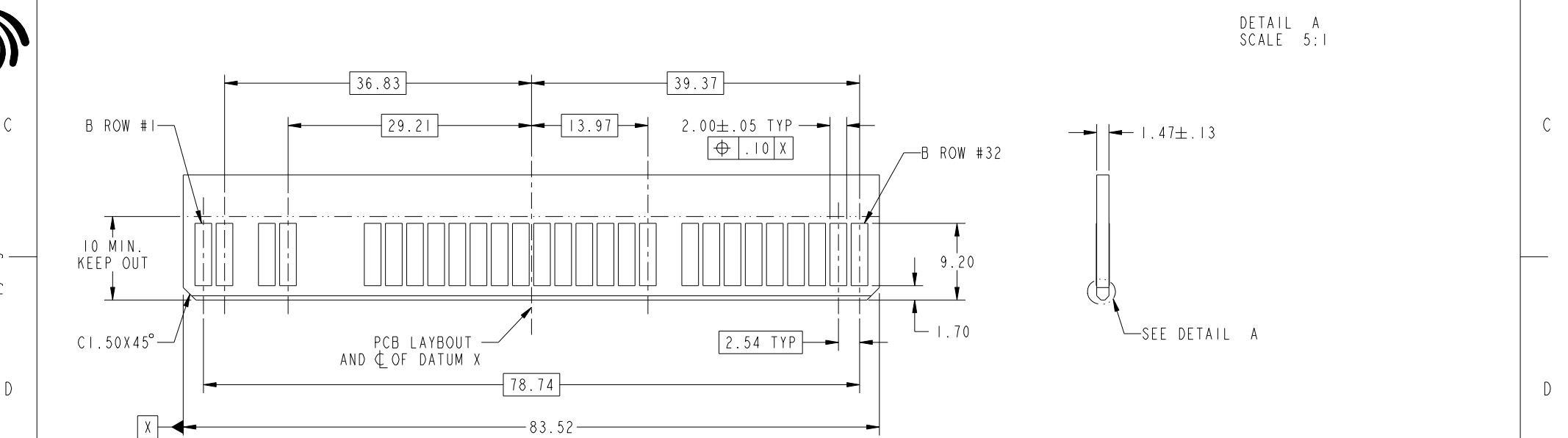
	<b>title</b> 2X32P R/A TYPE CONNECTOR ASSY WITH STAND-OFF	<b>dwg no</b> 10053363-500	<b>Rev.</b> A
	<b>catalog</b> PDM: Rev-A	<b>STATUS:</b> Released	<b>CUSTOMER</b> sheet 2 of 3 Printed: Dec 03, 2010



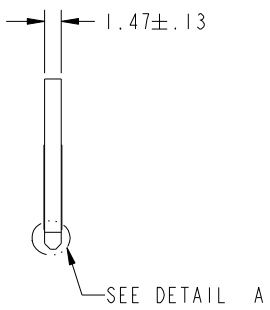
RECOMMENDED PCB LAYOUT



DETAIL A  
SCALE 5:1



RECOMMENDED DAUGHTER CARD LAYOUT (TOP SIDE)



	<b>2X32P R/A TYPE CONNECTOR</b> ASSY WITH STAND-OFF	dwg no <b>10053363-500</b>	Rev. <b>A</b>
	catalog	<b>PDM: Rev:A</b>	STATUS: <b>Released</b> CUSTOMER sheet 3 of 3 Printed: Dec 03, 2010

Copyright FCI.