

FOR 15P

REMARK:

1.CHARACTERISTICS:

RATED VOLTAGE: 250V  
 RATED CURRENT: 2.5AMP  
 CONTACT RESISTANCE: 25mohms MAX.INITIAL,  
 40mohms MAX.AFTER.  
 INSULATION RESISTANCE: 5000Mohms MIN.at 500V DC  
 DIELECTRIC STRENGTH: 750VRMS  
 OPERATING TEMPERATURE RANGE: -55°C~105°C  
 INSERTION/EXTRACTION FORCE PER CONTACT: 5N Max./0.2N Min..  
 MATING/UNMATING CYCLES: 200MATINGS MIN FOR GOLD-FLASH  
 500MATINGS MIN FOR 30u" GOLD .

2.MATERIAL:

INSULATORS: THERMOPLASTIC G.F(UL94V-0) BLACK  
 CONTACTS: COPPER ALLOY,GOLD(G/F or 30U") TOP OVER CONTACT  
 AREA,100u" Min MATTE TIN TOP OVER SOLDER AREA,  
 50u" Min NICKEL UNDER PLATE.  
 SHELL: CARBON STEEL,100u" Min NICKEL TOP OVER,  
 50u" Min COPPER UNDER PLATE.

3. PART NUMBER DESCRIPTION:

10090928-P XX X X LF  
 SERIES NO. LF: ROHS COMPLIANT  
 TYPE FLANGE MOUNTING OPTION  
 P: PIN (MALE) X: UNC #4-40 CLINCHNUTS  
 NUMBER OF CONTACTS CONTACT FINISH  
 15: 15-PIN A: GOLD FLASH  
 26: 26-PIN 6: 30u" GOLD  
 44: 44-PIN  
 62: 62-PIN

POS.	PART NO.	THREAD TYPE
15	10090928-P15*XL	UNC #4-40
26	10090928-P26*XL	UNC #4-40
44	10090928-P44*XL	UNC #4-40
62	10090928-P62*XL	UNC #4-40

POS.	A	B	C	D	E	H
15	30.81	24.99	16.92	2.29	5.90 <sup>+0.25</sup> <sub>0</sub>	19.10
26	39.24	33.32	25.25	2.29	5.90 <sup>+0.25</sup> <sub>0</sub>	27.75
44	53.04	47.04	38.96	2.29	5.70 <sup>+0.25</sup> <sub>0</sub>	41.30
62	69.32	63.50	55.42	2.41	5.70 <sup>+0.25</sup> <sub>0</sub>	57.40

mat'l. code		tolerances unless otherwise specified				CUSTOMER COPY		FCI	
ltr	ecn no	dr	date	linear	.X ± 0.38	projection	www.fciconnect.com		
A	T09-1156	J.H	12/10/09		.XX ± 0.25	⊕	title		
B	T10-0164	J.H	10/19/10		.XXX ± 0.10	⊕	H/D D-SUB MALE STRAIGHT		
C	ELX-I-012576	KPS	21/08/12	angles	0° ± 2°	MM	product family	D-SUB	code
D	ELX-I-15500	A.B	2013/08/21	dr	JASON HSU 10/19/10	scale	size	dwg no	213
				enr	ALIAS BABU 2013/08/21	1:1	A4	10090928	sheet
				chr	MITHUN PAUL 2013/08/21				1 of 5
				appd	BIJU.K.PAUL 2013/08/21				
sheet index	revision sheet	D 1	D 2	D 3	D 4	D 5			



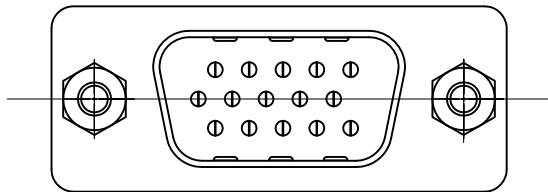
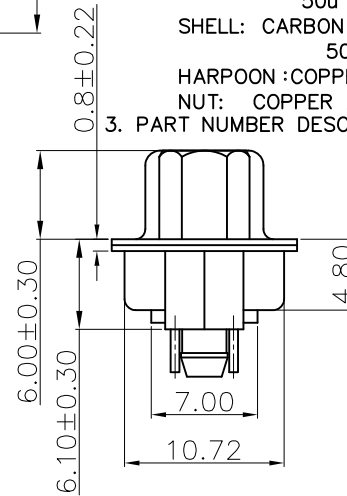
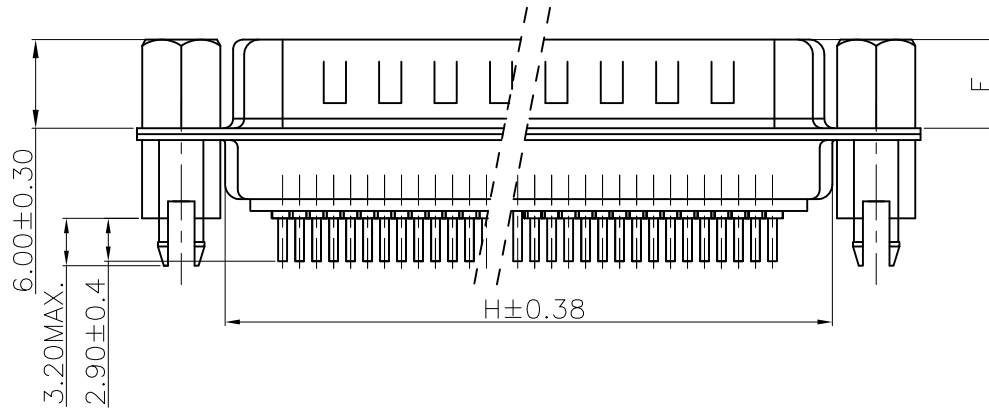
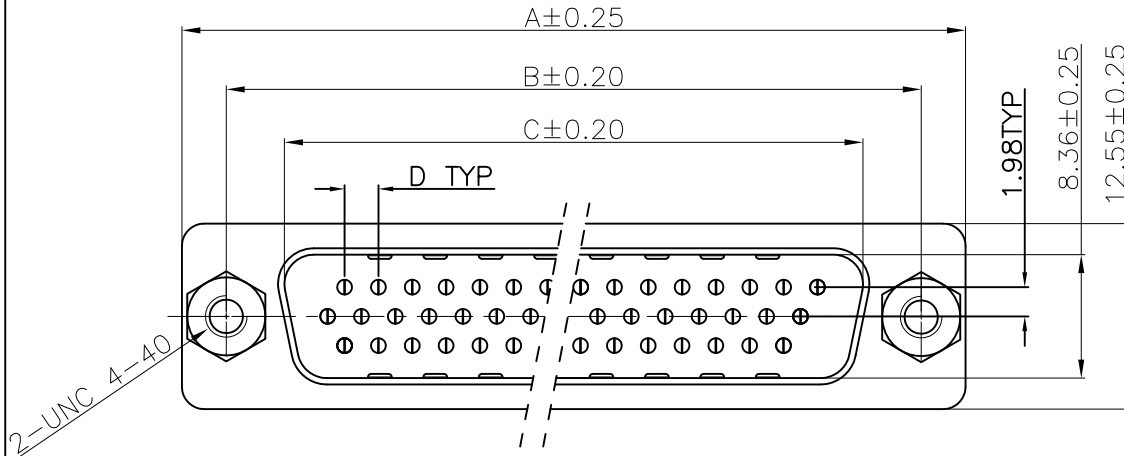
All rights strictly reserved. Reproduction or issue to third parties in any form whatever is not permitted without written authority from the proprietor. Property of FCI. Copyright FCI.

Tous droits strictement réservés. Reproduction ou communication a des tiers interdite sous quelque forme que ce soit sans autorisation écrite du propriétaire. Propriété de c FCI. Droits de reproduction FCI.

1 | 2

3 |

4



FOR 15P

REMARK:

1.CHARACTERISTICS:

RATED VOLTAGE: 250V  
 RATED CURRENT: 2.5AMP  
 CONTACT RESISTANCE: 25mohms MAX.INITIAL,  
 40mohms MAX.AFTER.  
 INSULATION RESISTANCE: 5000Mohms MIN.at 500V DC  
 DIELECTRIC STRENGTH: 750VRMS  
 OPERATING TEMPERATURE RANGE: -55°C~105°C  
 INSERTION/EXTRACTION FORCE PER CONTACT :5N Max./0.2N Min..  
 MATING/UNMATING CYCLES :200MATINGS MIN FOR GOLD-FLASH  
 500MATINGS MIN FOR 30u" GOLD .

2.MATERIAL:

INSULATORS: THERMOPLASTIC G.F(UL94V-0) BLACK  
 CONTACTS: COPPER ALLOY,GOLD(G/F or 30u") TOP OVER CONTACT  
 AREA,100u" Min MATTE TIN TOP OVER SOLDER AREA,  
 50u" Min NICKEL UNDER PLATE.  
 SHELL: CARBON STEEL,100u" Min NICKEL TOP OVER,  
 50u" Min COPPER UNDER PLATE.  
 HARPOON :COPPER ALLOY ,100u" Min MATTE TIN PLATED.  
 NUT: COPPER ALLOY , 50u" Min NICKEL PLATED.

3. PART NUMBER DESCRIPTION:

10090928-P XX X V LF

SERIES NO. \_\_\_\_\_  
 TYPE \_\_\_\_\_  
 P: PIN (MALE)  
 NUMBER OF CONTACTS \_\_\_\_\_  
 15: 15-PIN  
 26: 26-PIN  
 44: 44-PIN  
 62: 62-PIN  
 LF: ROHS COMPLIANT  
 PLANGE MOUNTING OPTION  
 V: UNC #4-40 SCREWLOCKS  
 CONTACT FINISH  
 4: GOLD FLASH  
 6: 30u" GOLD

POS.	PART NO.
15	10090928-P15*VLF
26	10090928-P26*VLF
44	10090928-P44*VLF
62	10090928-P62*VLF

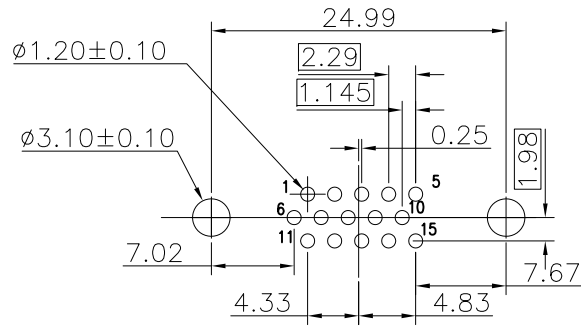
POS.	A	B	C	D	E	H
15	30.81	24.99	16.92	2.29	5.90 <sup>+0.25</sup> <sub>0</sub>	19.10
26	39.24	33.32	25.25	2.29	5.90 <sup>+0.25</sup> <sub>0</sub>	27.75
44	53.04	47.04	38.96	2.29	5.70 <sup>+0.25</sup> <sub>0</sub>	41.30
62	69.32	63.50	55.42	2.41	5.70 <sup>+0.25</sup> <sub>0</sub>	57.40

mat'l. code				tolerances unless otherwise specified			CUSTOMER COPY		FCI		www.fciconnect.com	
ltr	ecn no	dr	date	linear	.X ± 0.38		projection	title				
D					.XX ± 0.25			H/D D-SUB MALE STRAIGHT				
					.XXX ± 0.10							
				angles	0° ±2°		MM	product family		code		
				dr	JASON HSU	10/19/10		D-SUB		213		
				enr	ALIAS BABU	2013/08/21		size		dwg no		
				chr	MITHUN PAUL	2013/08/21	scale	A4		10090928		
				appd	BIJU.K.PAUL	2013/08/21		1:1		sheet		
sheet index	revision sheet											

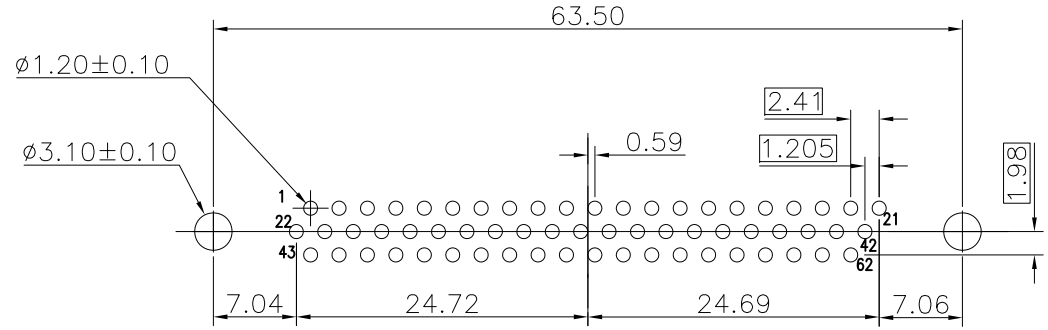
1 | 2

3 |

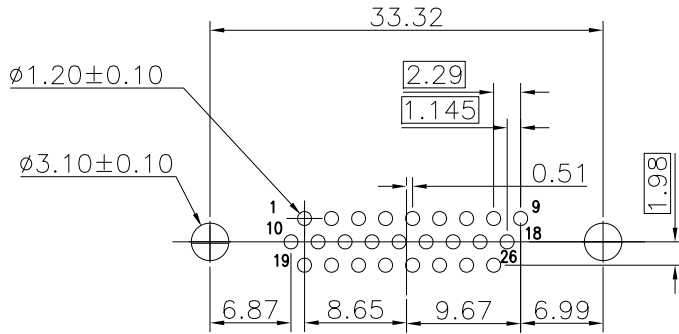
4



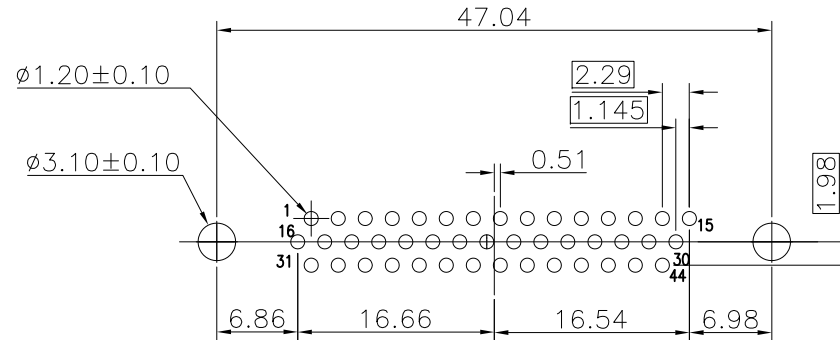
P.C.B LAYOUT(FOR 15P)



P.C.B LAYOUT(FOR 62P)

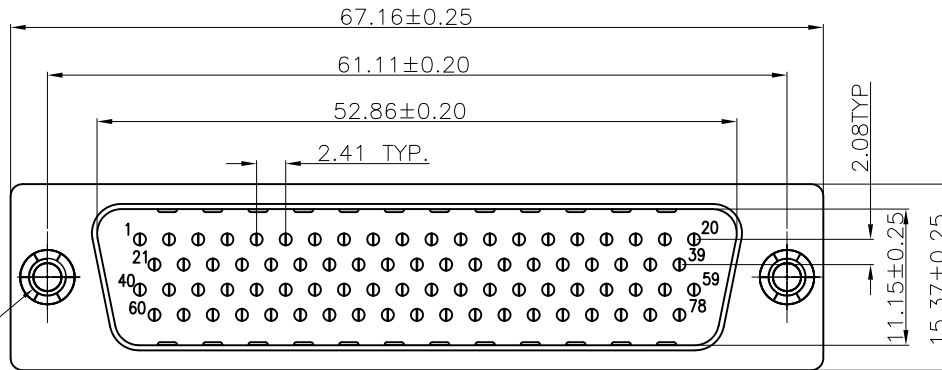


P.C.B LAYOUT(FOR 26P)

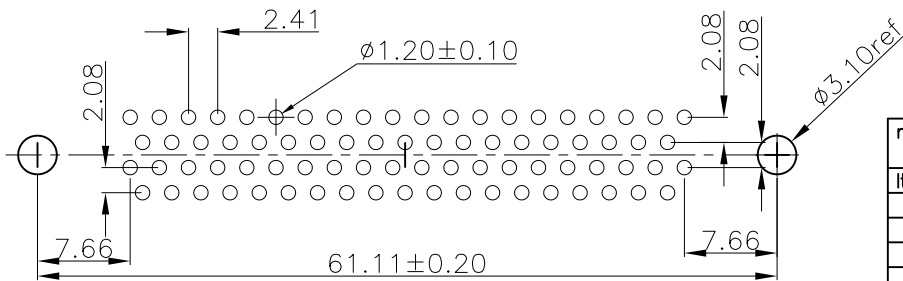
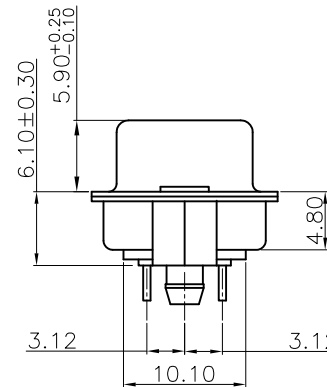
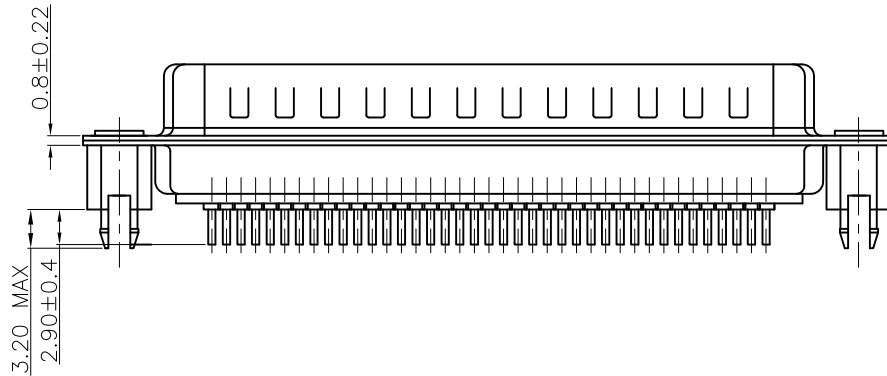


P.C.B LAYOUT(FOR 44P)

mat'l. code				tolerances unless otherwise specified			CUSTOMER COPY		FCJ		www.fciconnect.com	
ltr	ecn no	dr	date	linear	.X ± 0.38		projection	title				
D					.XX ± 0.25			H/D D-SUB MALE STRAIGHT PCB				
					.XXX ± 0.10							
				angles	0° ± 2°							
				dr	JASON HSU	10/19/10	MM	product family		D-SUB	code	
				enr	ALIAS BABU	2013/08/21		size		dwg no	213	
				chr	MITHUN PAUL	2013/08/21		scale		1:1	sheet	
				appd	BIJU.K.PAUL	2013/08/21	A4		10090928		3 of 5	
sheet index	revision sheet											



2-UNC 4-40



P.C.B LAYOUT

REMARK:

1.CHARACTERISTICS:

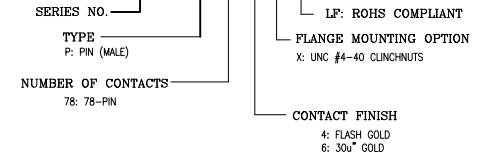
RATED VOLTAGE: 250V  
 RATED CURRENT: 2.5AMP  
 CONTACT RESISTANCE: 35mohms MAX.INITIAL,  
 50mohms MAX.AFTER.  
 INSULATION RESISTANCE: 5000Mohms MIN.at 500V DC  
 DIELECTRIC STRENGTH: 750VRMS  
 OPERATING TEMPERATURE RANGE: -55°C~105°C  
 INSERTION/EXTRACTION FORCE PER CONTACT :5N Max./0.2N Min..  
 MATING/UNMATING CYCLES :200MATINGS MIN FOR GOLD-FLASH  
 500MATINGS MIN FOR 30u" GOLD .

2.MATERIAL:

INSULATORS: THERMOPLASTIC G.F(UL94V-0) BLACK  
 CONTACTS: COPPER ALLOY,GOLD(G/F or 30U") TOP OVER CONTACT  
 AREA,100u" Min MATTE TIN TOP OVER SOLDER AREA,  
 50u" Min NICKEL UNDER PLATE.  
 SHELL: CARBON STEEL,100u" Min NICKEL TOP OVER,  
 50u" Min COPPER UNDER PLATE.  
 HARPOON :COPPER ALLOY ,100u" Min MATTE TIN PLATED.

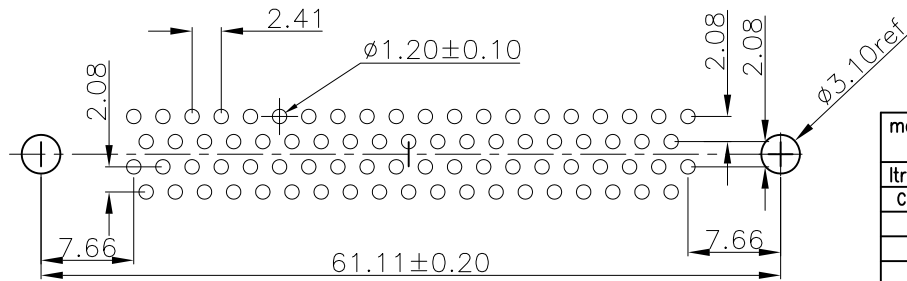
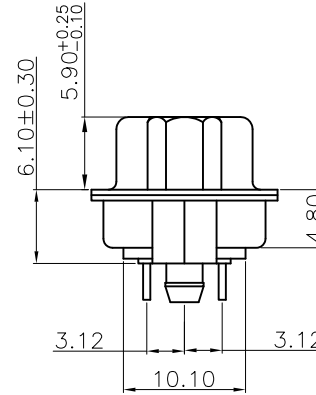
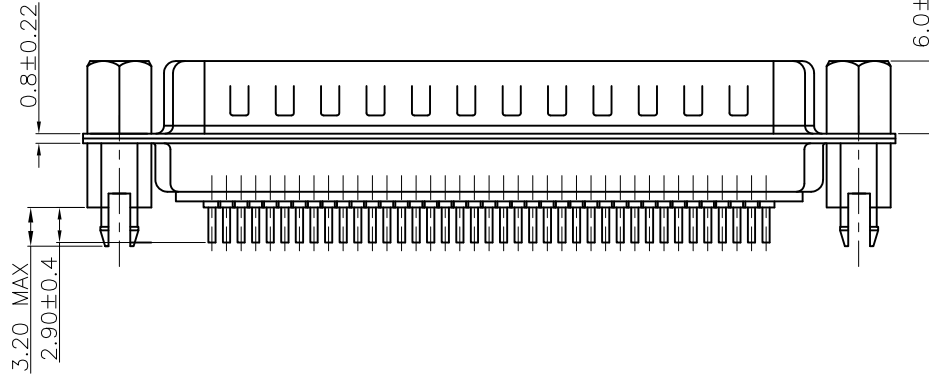
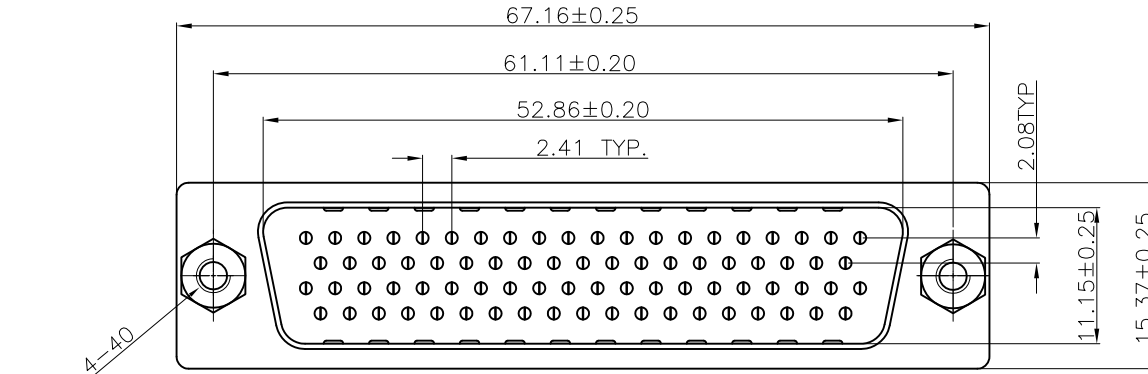
3. PART NUMBER DESCRIPTION:

10090928-P 78 X X LF



POS.	PART NO.	THREAD TYPE
78	10090928-P78*XLF	UNC #4-40

mat'l. code				tolerances unless otherwise specified		CUSTOMER COPY		FCI	
ltr	ecn no	dr	date	linear	.X ± 0.38	projection	www.fciconnect.com		
D					.XX ± 0.25		title		
				angles	.XXX ± 0.10		H/D D-SUB MALE STRAIGHT		
					0° ± 2°		product family D-SUB		code
				dr	JASON HSU 10/19/10		size		213
				engr	ALIAS BABU 2013/08/21		dwg no		sheet
				chr	MITHUN PAUL 2013/08/21	scale	10090928		4 of 5
				appd	BIJU.K.PAUL 2013/08/21	1:1	A4		
sheet index	revision sheet								



P.C.B LAYOUT

REMARK:

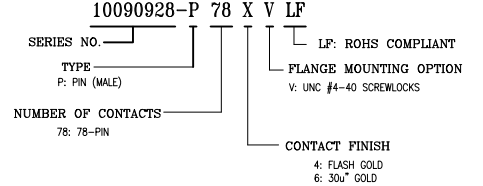
1.CHARACTERISTICS:

- RATED VOLTAGE: 250V
- RATED CURRENT: 2.5AMP
- CONTACT RESISTANCE: 35mohms MAX.INITIAL, 50mohms MAX.AFTER.
- INSULATION RESISTANCE: 5000Mohms MIN.at 500V DC
- DIELECTRIC STRENGTH: 750VRMS
- OPERATING TEMPERATURE RANGE: -55°C~105°C
- INSERTION/EXTRACTION FORCE PER CONTACT: 5N Max./0.2N Min..
- MATING/UNMATING CYCLES :200MATINGS MIN FOR GOLD-FLASH 500MATINGS MIN FOR 30u" GOLD .

2.MATERIAL:

- INSULATORS: THERMOPLASTIC G.F(UL94V-0) BLACK
- CONTACTS: COPPER ALLOY,GOLD(G/F or 30U") TOP OVER CONTACT AREA,100u" Min MATTE TIN TOP OVER SOLDER AREA, 50u" Min NICKEL UNDER PLATE.
- SHELL: CARBON STEEL,100u" Min NICKEL TOP OVER, 50u" Min COPPER UNDER PLATE.
- HARPOON :COPPER ALLOY ,100u" Min MATTE TIN PLATED.
- NUT: COPPER ALLOY , 50u" Min NICKEL PLATED.

3. PART NUMBER DESCRIPTION:



PART NO.: 10090928-P78\*VLF

mat'l. code				tolerances unless otherwise specified			CUSTOMER COPY		FCI	
ltr	ecn no	dr	date	linear	.X ± 0.38	projection	www.fciconnect.com			
c				angles	.XX ± 0.25		title			
					.XXX ± 0.10		H/D D-SUB MALE STRAIGHT			
				dr	0° ± 2°		product family D-SUB		code	
				enr	JASON HSU 10/19/10		size dwg no		213	
				chr	ALIAS BABU 2013/08/21		10090928		sheet	
				appd	MITHUN PAUL 2013/08/21		A4		5 of 5	
					BIJU.K.PAUL 2013/08/21	scale				
sheet index	revision sheet									