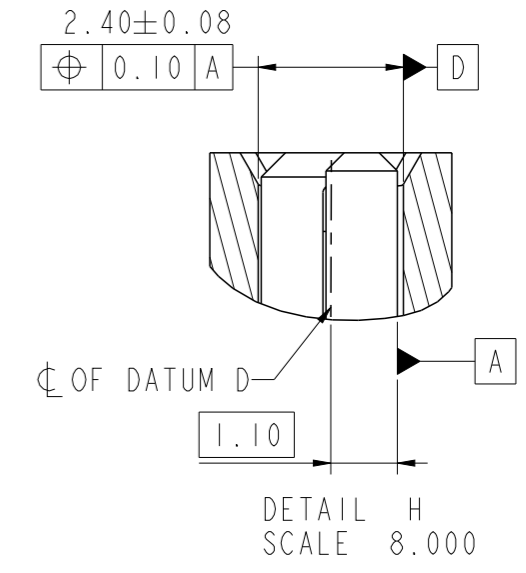
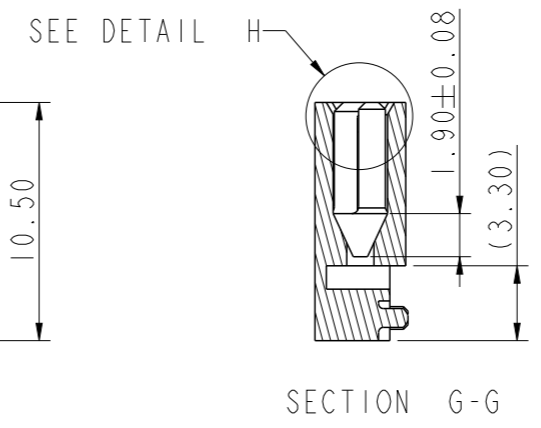
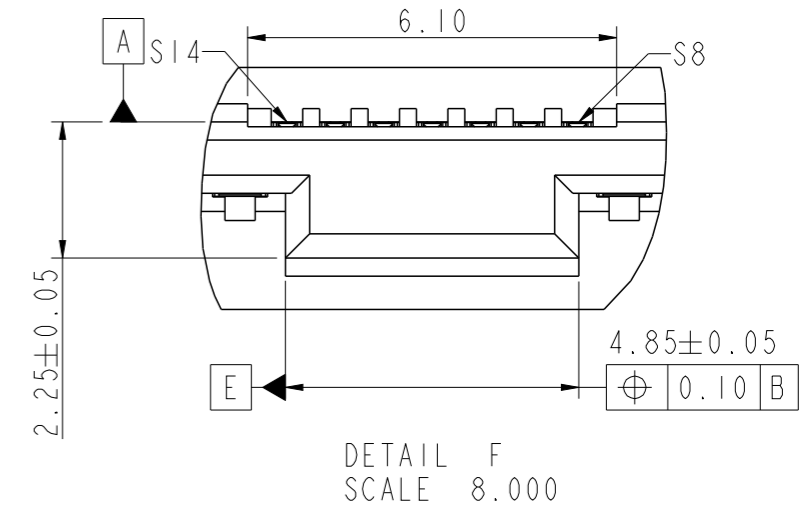
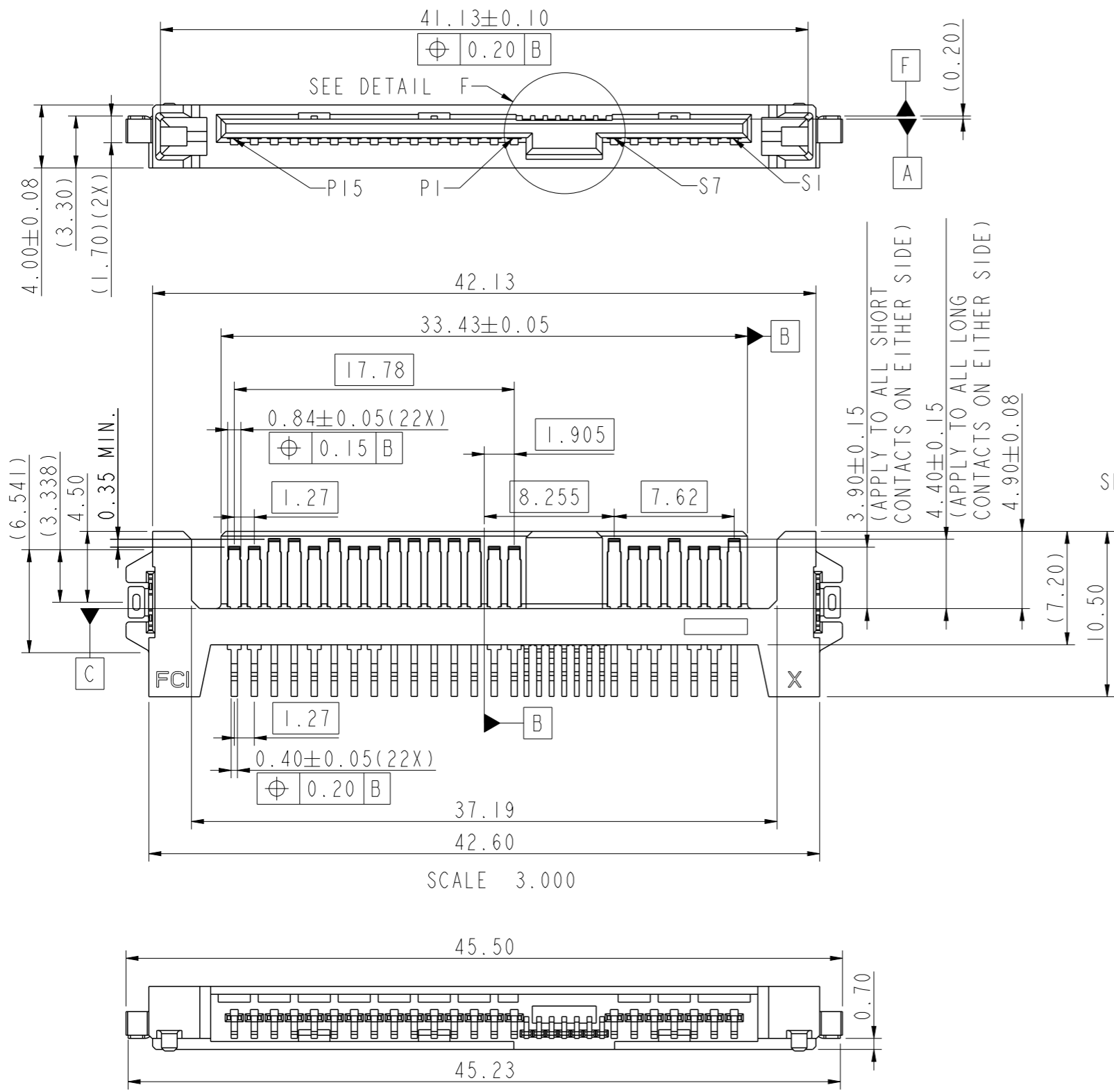


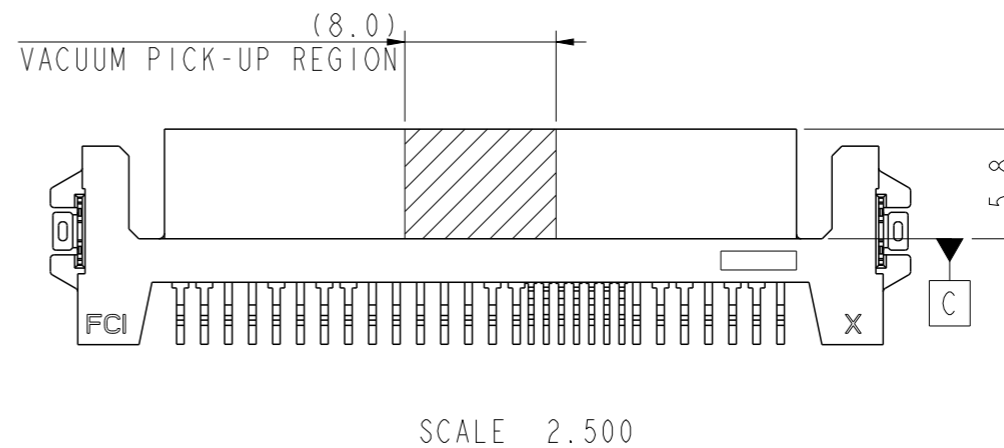
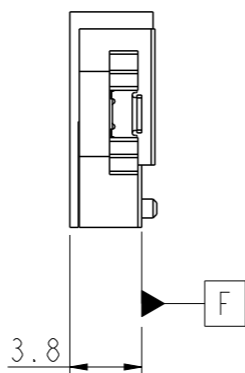
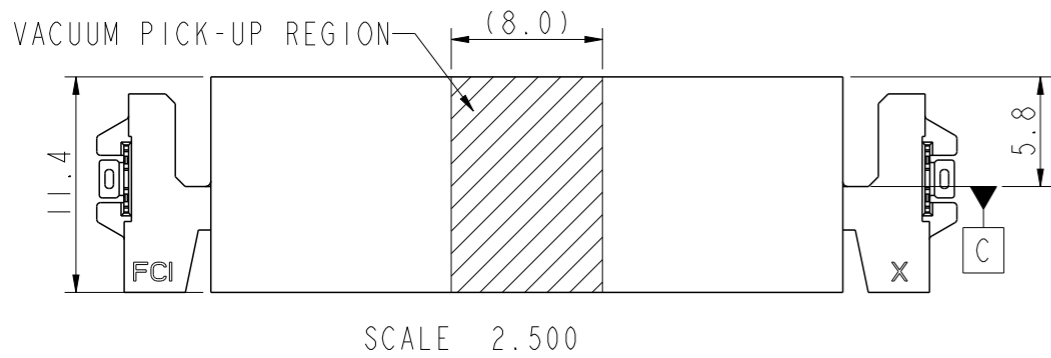
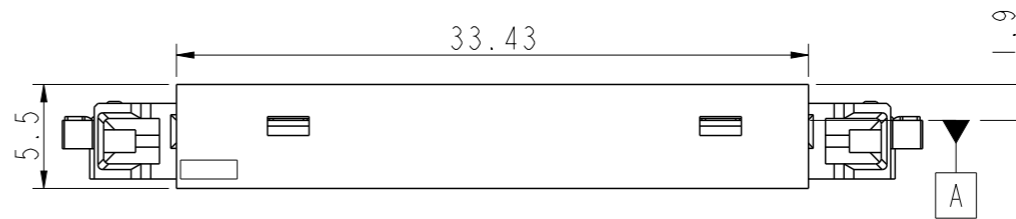
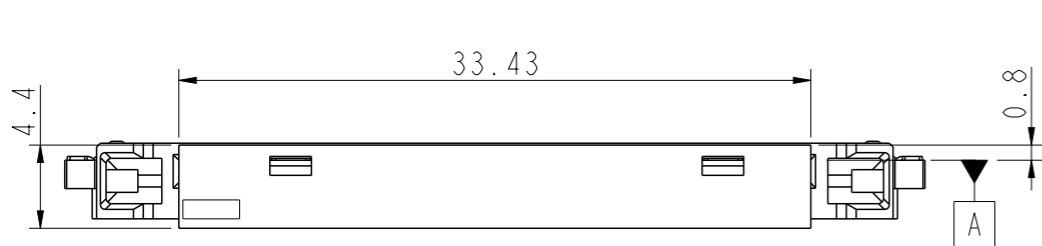
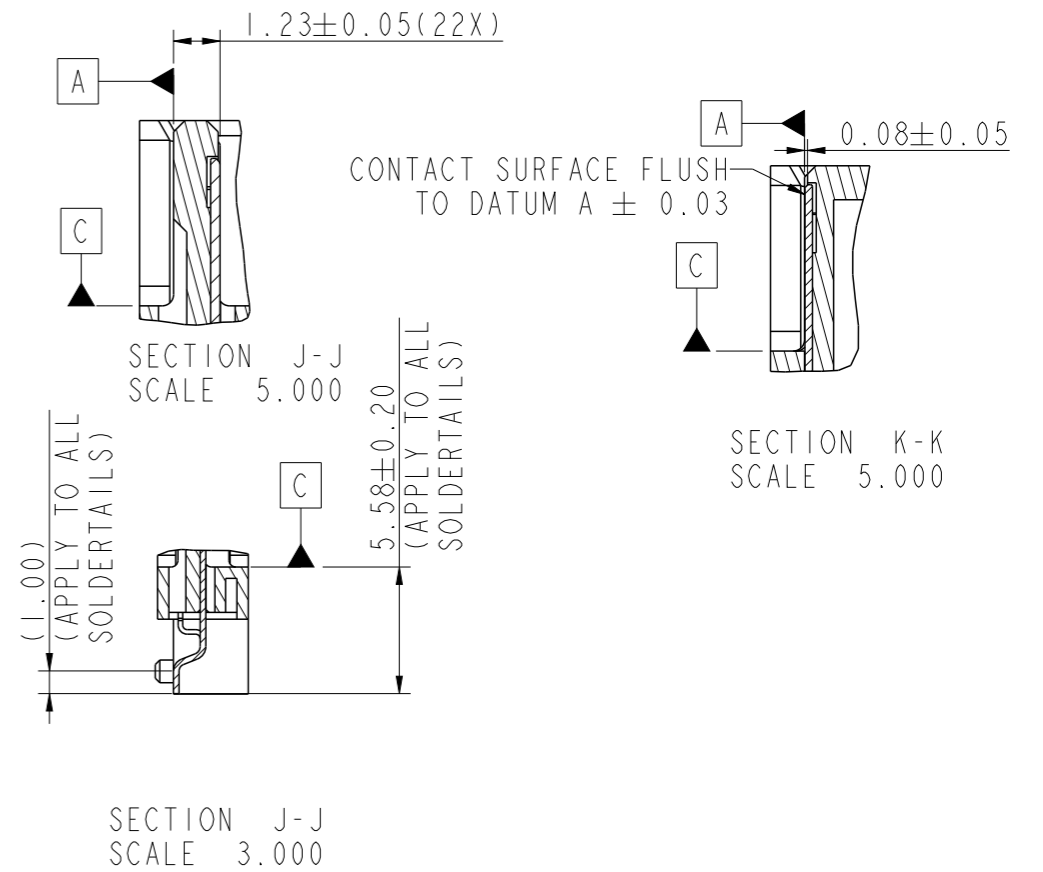
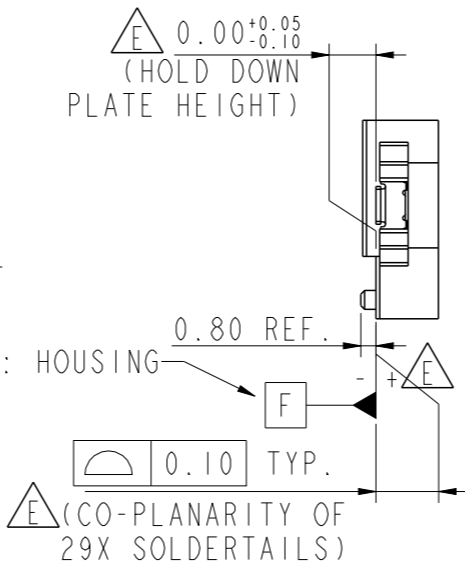
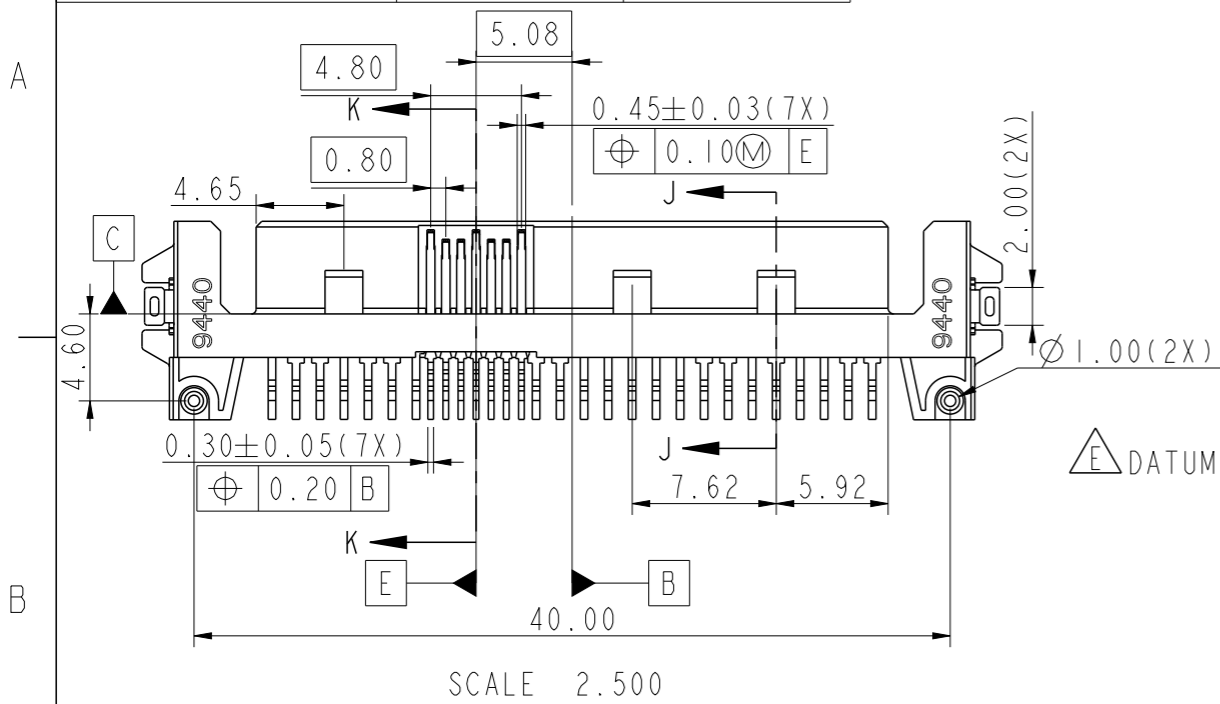
PRODUCT NO.  
10099439-002LF  
10099439-003C-TRLF



Copyright FCI.

spec ref	dr	Louis Ng	2010/04/30	projection	MM	size	A3	scale	3.000
tolerance std	eng	Jeffrey Lim	2015/03/20			ecn no	ELX-S-20119-1	rel level	Released
ASME Y14.5	chr	-	-						
surface		linear	0.X	±0.25		title SAS PLUG R/A TYPE ASSY, Z-HT. 0.20	dwg no 10099439	rev E	
			0.XX	±0.15					
			0.XXX	±0.050					
	angular	0°	±2°	www.fci.com	cat. no.	-	Product - Customer Drw	sheet 1 of 3	

PRODUCT NO.	WITH PICK-UP CAP	PACKAGING
10099439-002LF	NO	TRAY
10099439-002CLF	YES	TAPE & REEL
10099439-003C-TRLF		

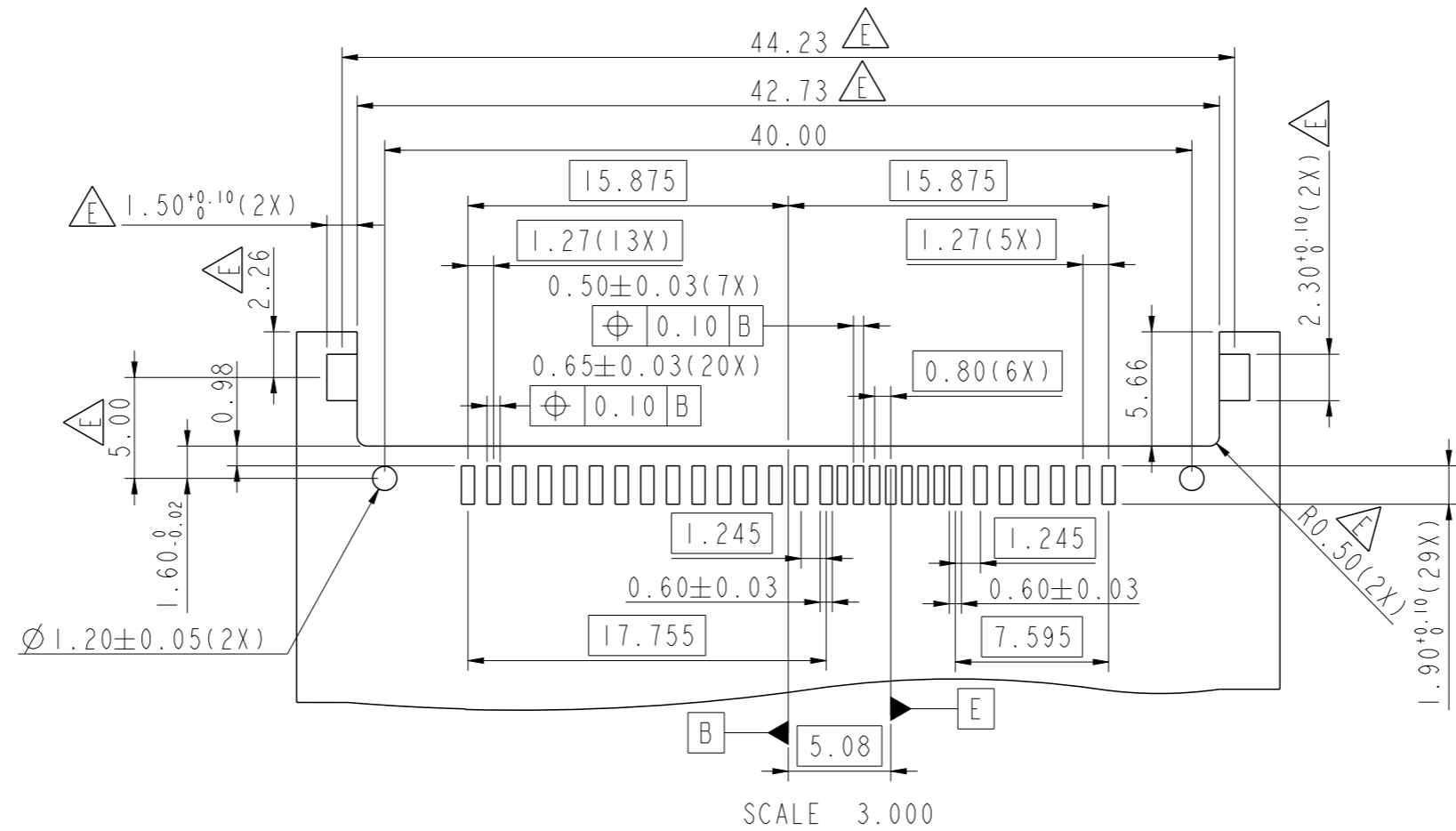


10099439-002 WITH PICK-UP CAP ATTACHED

10099439-003 WITH PICK-UP CAP ATTACHED

spec ref	dr	Louis Ng	2010/04/30	projection	MM	size	A3	scale	2.000
tolerance std	eng	Jeffrey Lim	2015/03/20			ecn no	ELX-S-20119-1	rel level	Released
ASME Y14.5	chr	-	-						
surface	linear	0.X	±0.25			dwg no	10099439	rev	E
		0.XX	±0.15						
		0.XXX	±0.050						
	angular	0°	±2°	www.fci.com	cat. no.	Product - Customer Drw	sheet 2 of 3		

PRODUCT NO.  
SEE TABLE



SCALE 3.000  
RECOMMENDED SMT PAD DIMENSIONS

NOTES:

- MATERIAL:  
HOUSING & CAP: HIGH TEMPERATURE THERMOPLASTIC, BLACK, UL94V-0  
CONTACT & HOLD DOWN: COPPER ALLOY
- FINISH:  
CONTACT: 1.27um MIN. Ni UNDERPLATE OVERALL,  
1.91um MIN. 100% MATTE Sn(LEAD-FREE) ON SOLDER TAIL,  
0.76um MIN. Au ON CONTACT AREA  
HOLD DOWN: 1.91um MIN. 100% MATTE Sn(LEAD-FREE) OVER  
1.27um MIN. Ni UNDERPLATE OVERALL
- RECOMMENDED PCB THICKNESS: 1.00mm
- PRODUCT SPECIFICATION: GS-12-282
- PACKAGING SPECIFICATION: GS-14-952(TRAY); GS-14-1038(TAPE & REEL)
- THIS PRODUCT MEETS EUROPEAN UNION DIRECTIVES AND OTHER COUNTRY REGULATIONS AS DESCRIBED IN GS-47-0004
- THE HOUSING WILL WITHSTAND EXPOSURE TO 260°C PEAK TEMPERATURE FOR 10 SECONDS IN A CONVECTION, INFRA-RED OR VAPOR PHASE REFLOW OVEN
- A SYMBOL  $\triangle E$  WILL BE NEXT TO ANY DIMENSION, VIEW OR NOTE WHICH HAS BEEN MODIFIED WITH THE CURRENT DRAWING REVISION

spec ref		dr	Louis Ng	2010/04/30	projection	MM	size	A3	scale	2.000
tolerance std		eng	Jeffrey Lim	2015/03/20			ecn no		ELX-S-20119-1	
ASME Y14.5		chr	-	-			rel level		Released	
surface	<input checked="" type="checkbox"/>	linear	0.X	±0.25		SAS PLUG R/A TYPE ASSY, Z-HT. 0.20	dwg no 10099439	rev		E
			0.XX	±0.15				Product - Customer Drw		sheet 3 of 3
			0.XXX	±0.050				www.fci.com		cat. no.
angular	0°	±2°								