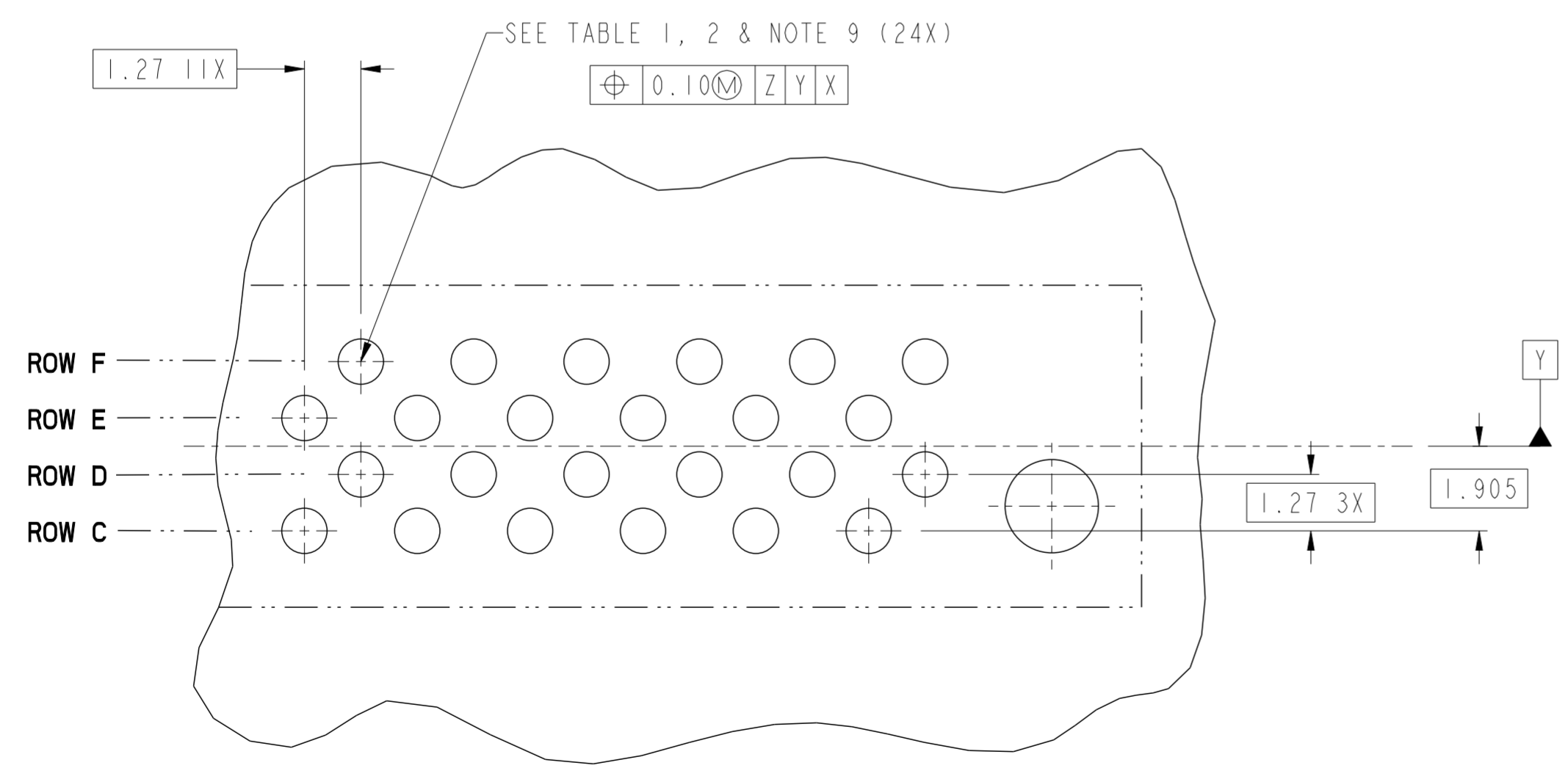
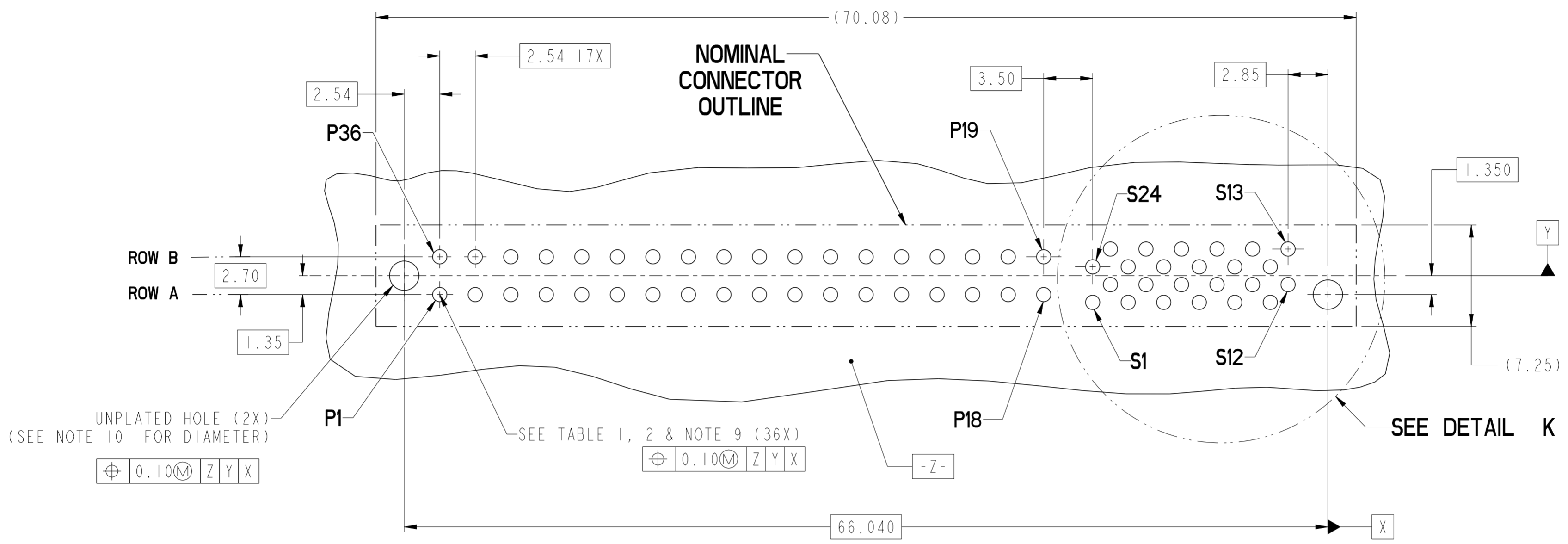


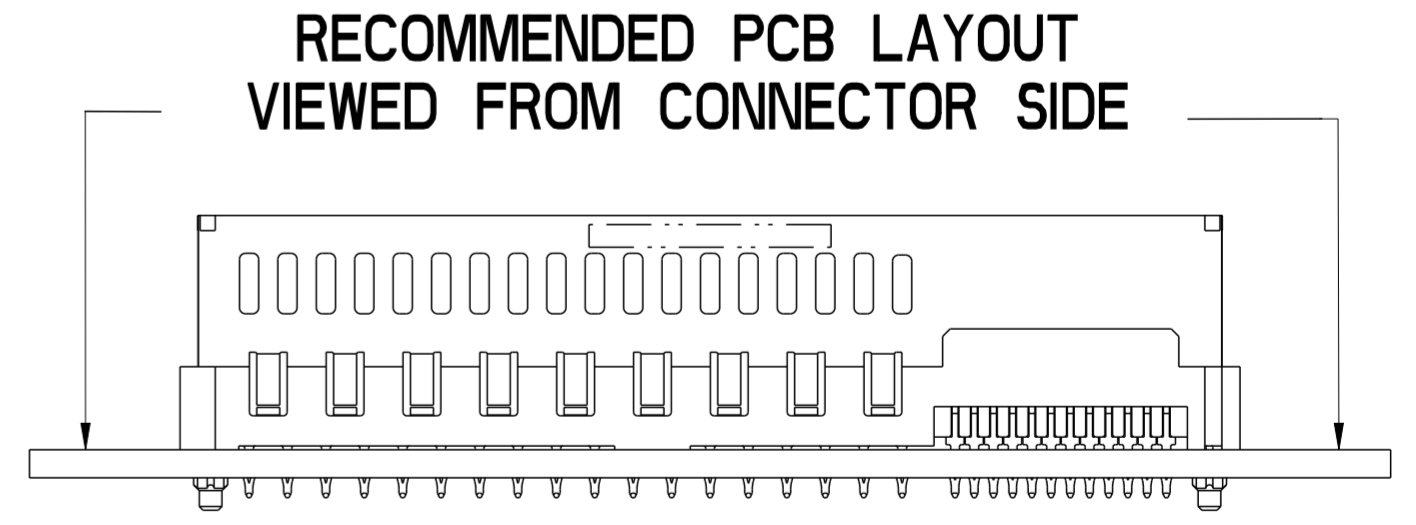
SECTION C-C SECTION D-D

rev	ecn no	dr	date	spec ref	dr	2010/04/08	projection	MM	size	A2	scale	4:1
A	---	HZ	2011-07-01	tolerance std	eng	Wei-Long Zhang	2011/09/19		ecn no	ELX-DG-006060-1	rel level	Released
B	ELX-FG-006060	WL	2011-09-19	ASME Y14.5	chr	Jon Qin	2011/09/19		product family	CARD EDGE		rel level
-	-	-	-	surface	appr	Pei-Ming Zheng	2011/09/19	product family	CARD EDGE	rel level	Released	rev
-	-	-	-	ASME Y14.5	linear	0.X	±0.3	www.fci.com	cat. no.	-	Product - Customer Drw	sheet 1 of 4
-	-	-	-	angular	0°	±2°	FCI	VERT RECT (36P 24S)	10114587	B		
-	-	-	-					HIGH POWER CARD EDGE				

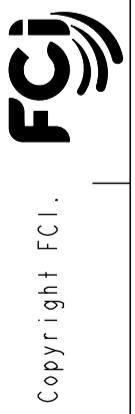
Copyright FCI. FCI



DETAIL K
SCALE 8:1

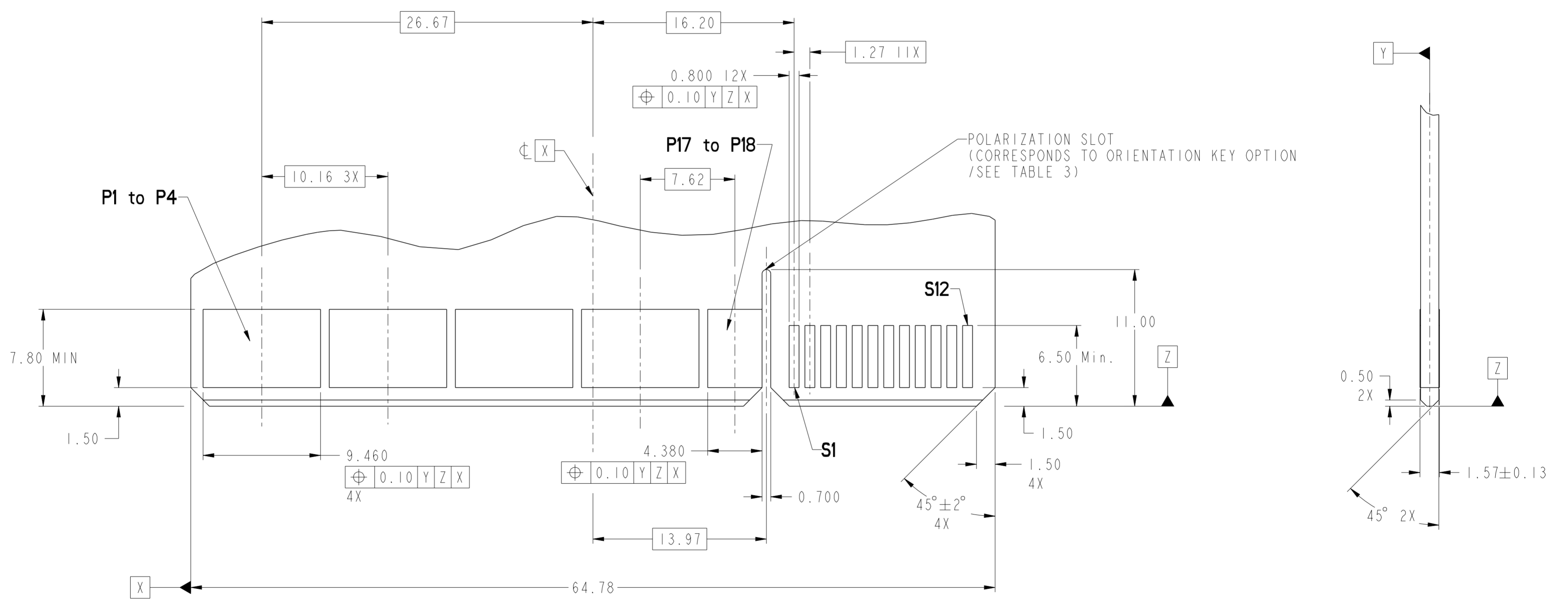


spec ref	-	dr	Tim Houtz	2010/04/08	projection	MM	size	A2	scale	4:1
tolerance std	ASME Y14.5	eng	Wei-Long Zhang	2011/09/19			ecn no	ELX-DG-006060-1		
TOLERANCES UNLESS OTHERWISE SPECIFIED		chr	Jon Qin	2011/09/19			rel level	Released		
surface	✓	appr	Pai-Ming Zheng	2011/09/19	product family	CARD EDGE	rel level	Released		
linear	0.X ±0.3 0.XX ±0.1 0.XXX ±0.05	FCI	www.fci.com		title	VERT RECT (36P 24S) HIGH POWER CARD EDGE		dwg no	10114587	
angular	0° ±2°	cat. no.		Product - Customer Drw		sheet 2 of 4	rev	B		



CONTACT TYPE	TOP LAYER DESCRIPTION	TABLE 1 (HPCE / SOLDER TAILS) PLATED THROUGH-HOLE REQUIREMENTS				
		DRILLED HOLE DIAMETER	COPPER THICKNESS	TIN-LEAD THICKNESS	TIN THICKNESS	FINISHED HOLE DIAMETER
POWER & SIGNAL	TIN-LEAD	1.10-1.16 (1.15 DRILL)	0.025 - 0.050	0.005 - 0.015	--	0.94 - 1.10
	IMMERSION TIN	1.10-1.16 (1.15 DRILL)	0.025 - 0.050	--	0.9 - 1.5um	0.94 - 1.10
	COPPER (SEE NOTE 8)	1.10-1.16 (1.15 DRILL)	0.025 - 0.050	--	--	0.94 - 1.10

CONTACT TYPE	TOP LAYER DESCRIPTION	TABLE 2 (HPCE / PRESS-FIT TAILS) PLATED THROUGH-HOLE REQUIREMENTS				
		DRILLED HOLE DIAMETER	COPPER THICKNESS	TIN-LEAD THICKNESS	TIN THICKNESS	FINISHED HOLE DIAMETER
POWER & SIGNAL	TIN-LEAD	0.81-0.86 (0.85 DRILL)	0.025 - 0.050	0.005 - 0.015	--	0.65 - 0.80
	IMMERSION TIN	0.81-0.86 (0.85 DRILL)	0.025 - 0.050	--	0.9 - 1.5um	0.70 - 0.80
	COPPER (SEE NOTE 8)	0.81-0.86 (0.85 DRILL)	0.025 - 0.050	--	--	0.70 - 0.80



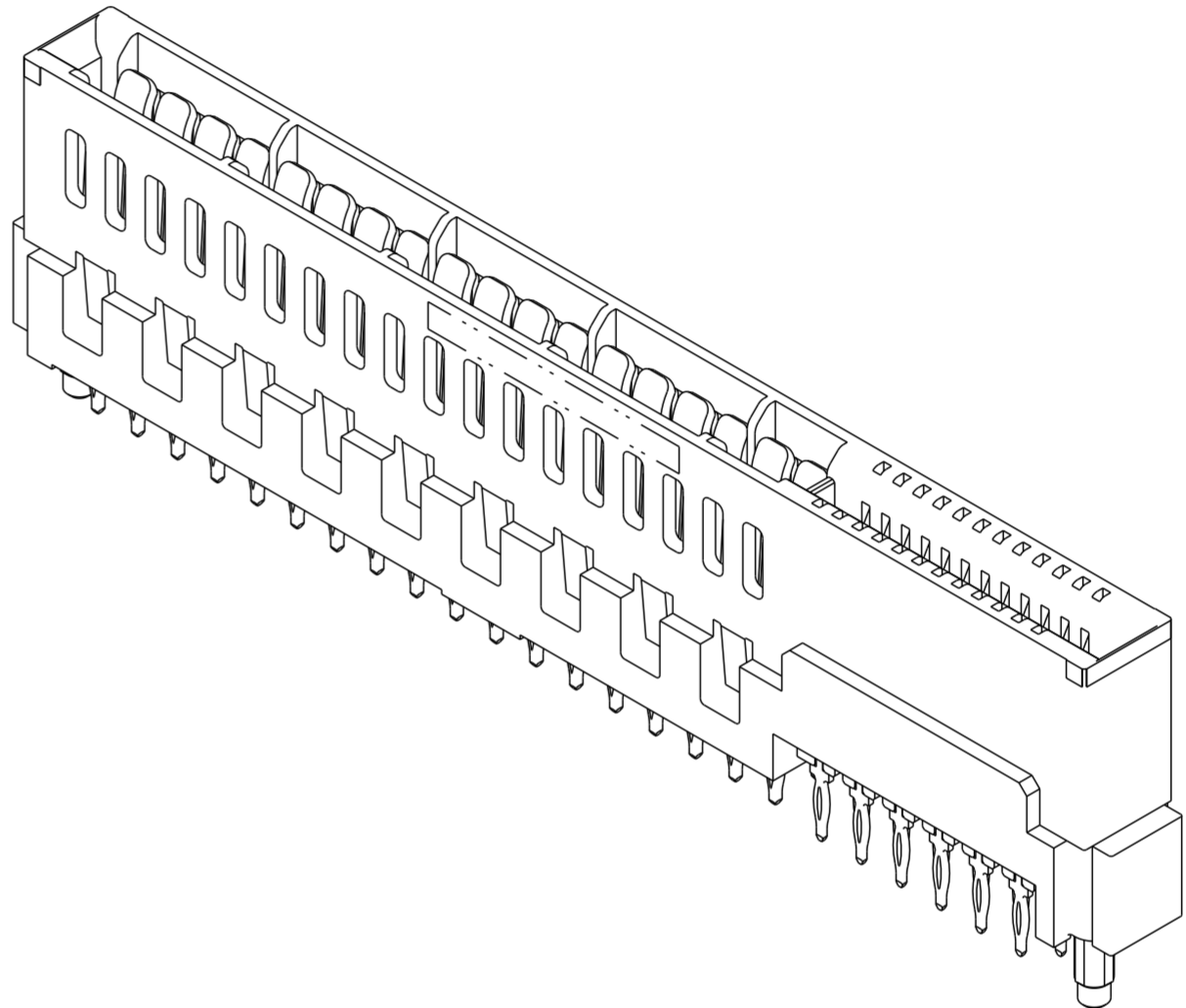
RECOMMENDED MATING BOARD
FOOTPRINT

dr	Tim Houtz	2010/04/08	projection	MM	size	A2	scale	4:1
eng	Wei-Long Zhang	2011/09/19			ecn no	ELX-DG-006060-1		
chr	Jon Qin	2011/09/19			rel level	Released		
appr	Pai-Ming Zheng	2011/09/19	product family	CARD EDGE	cat. no.	-	Product - Customer Drw	sheet 3 of 4
					title	VERT RECT (36P 24S) HIGH POWER CARD EDGE		rev
					dwg no	10114587		B

Copyright FCI.
FCI

HPCE PART NUMBER (TABLE 3)

PART NUMBER	TAIL TYPE	ORIENTATION KEY	DIM "A" TYPICAL TAIL LENGTH	DIM "B" RECOMMENDED BOARD THICKNESS
10114587-001LF	SOLDER	YES	3.17 ±0.25	1.59 - 2.38
10114587-002LF	SOLDER	NO		
10114587-003	PRESS-FIT	YES	3.17 ±0.25	1.57 MIN
10114587-003LF	PRESS-FIT	YES		
10114587-004	PRESS-FIT	NO		
10114587-004LF	PRESS-FIT	NO		



NOTES:

1. CONNECTOR MATERIALS:
 HOUSING: HIGH TEMPERATURE THERMAL PLASTIC, BLACK
 UL 94V-0 COMPLIANT
 CONTACTS: HIGH PERFORMANCE COPPER ALLOY.
2. CONTACT FINISH REF. GS-12-604 SECTION 5.2.
3. PRODUCT SPECIFICATION: GS-12-604.
4. APPLICATION SPECIFICATION: GS-20-128.
5. PRODUCT MARKING (FCI - PART NUMBER & DATE CODE) ON HOUSING IN AREA SHOWN.
6. PACKAGING MEETS FCI SPECIFICATION GS-14-937.
7. HOUSING COMPONENT WILL WITHSTAND EXPOSURE TO 260°C PEAK TEMPERATURE FOR 60 SECONDS IN A CONVECTION, INFRA-RED, OR VAPOR PHASE REFLOW OVEN.
8. COPPER PLATING THICKNESS IN CENTER OF VIA-HOLE CAN BE NO MORE THAN 0.003 LESS THAN OTHER AREAS.
9. ALL HOLE SIZES ARE FINISHED HOLE SIZES.
10. MOUNTING HOLES ARE UNPLATED
 Ø 2.40 +/- 0.1 FOR PRESS-FIT TAILS
 Ø 2.10 +/- 0.1 FOR SOLDER TAILS
11. A ΔSYMBOL WILL BE NEXT TO ANY DIMENSION, VIEW, OR NOTE WHICH HAS BEEN MODIFIED WITH THE CURRENT DRAWING REVISION.

dr	Tim Houtz	2010/04/08	projection	MM	size	A2	scale	4:1
eng	Wei-Long Zhang	2011/09/19			ecn no	ELX-DG-006069-1		
chr	Jon Qin	2011/09/19			product family	CARD EDGE	rel level	Released
appr	Pai-Ming Zheng	2011/09/19			title	VERT RECT (36P 24S)		cat. no.
					dwg no	10114587		rev
							Product - Customer Drw	
							sheet 4 of 4	

Copyright FCI. FCI