

NOTES:

1. SPECIFICATIONS

- Current Rating: 1A AC,DC
- Voltage Rating: 125V AC,DC
- Temperature Range: -40°C ~ +105°C
- Contact Resistance: 20mΩ Max.
- Insulation Resistance: 100MΩ Min.
- Withstanding Voltage: 500V AC/minute
- Material: Natural Thermoplastic, UL94V-0

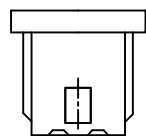
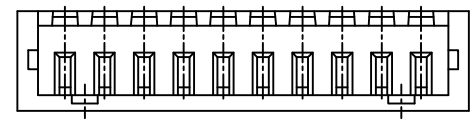
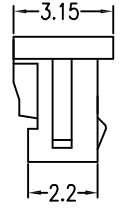
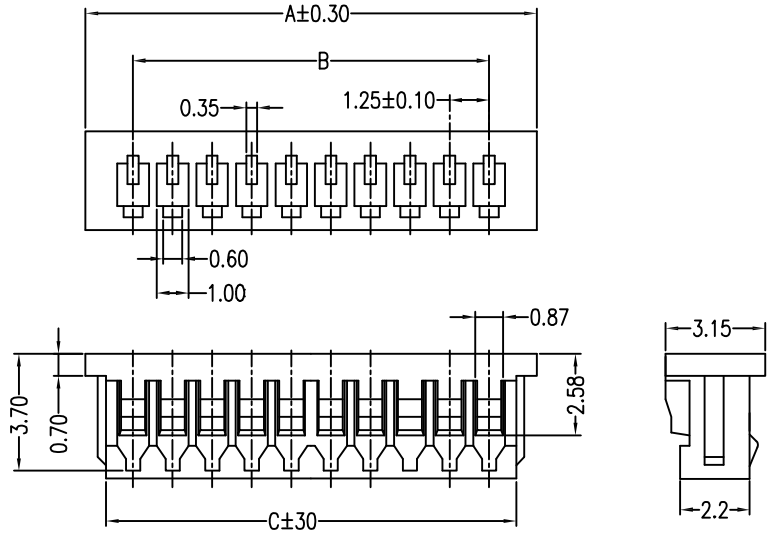
2. Part number of terminal for wire assembly: 10114827

3. Ordering Information & Dimensions:

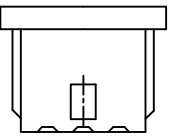
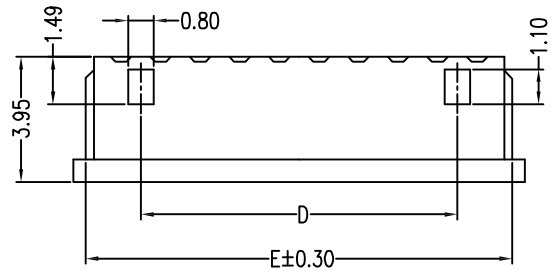
10114826- X 0 X XX LF

Material
 0: PA66 Natural
 1: PA66 Black

LF: See note A
 pin counts from 02~15
 Packaging
 0: Bulk



ONLY 2 CIRCUITS



ONLY 3 CIRCUITS

PART NO.	Dimensions				
	A	B	C	D	E
10114826-x0x02LF	4.25	1.25±0.05	2.95		3.47
10114826-x0x03LF	5.50	2.50±0.10	4.20		4.72
10114826-x0x04LF	6.75	3.75±0.10	5.45	2.50±0.10	5.97
10114826-x0x05LF	8.00	5.00±0.10	6.70	3.75±0.10	7.22
10114826-x0x06LF	9.25	6.25±0.15	7.95	5.00±0.15	8.47
10114826-x0x07LF	10.50	7.50±0.15	9.20	6.25±0.15	9.72
10114826-x0x08LF	11.75	8.75±0.15	10.45	7.50±0.15	10.97
10114826-x0x09LF	13.00	10.00±0.15	11.70	8.75±0.15	12.22
10114826-x0x10LF	14.25	11.25±0.20	12.95	10.00±0.20	13.47
10114826-x0x11LF	15.50	12.50±0.20	14.20	11.25±0.20	14.72
10114826-x0x12LF	16.75	13.75±0.20	15.45	12.50±0.20	15.97
10114826-x0x13LF	18.00	15.00±0.20	16.70	13.75±0.20	17.22
10114826-x0x14LF	19.25	16.25±0.20	17.95	15.00±0.20	18.47
10114826-x0x15LF	20.50	17.50±0.20	19.20	16.25±0.20	19.72

mat'l. code		surface ISO 1302		tolerance ISO 406	projection ISO 101	product family	
ltr		ecn no	dr	date	tolerances unless otherwise specified		WTB
A	T10-0145	JH		12/1/10	angles	linear	title
B	ELX-N-23435	TIM		03/02/16	0°±2'	mm	WTB 1.25MM HOUSING
					.0±.25	scale 1:1	dwg no
					.00±.15		sheet 1 of 1
					.000±		size
				dr	JASON HSU	12/1/10	10114826
				engr	JASON HSU	12/1/10	A3
				chr	GARY HSIEH	12/1/10	
				app	JOSEPH HSIA	12/1/10	
sheet index		revision	B		type		
		sheet	1		Product Customer Drawing		