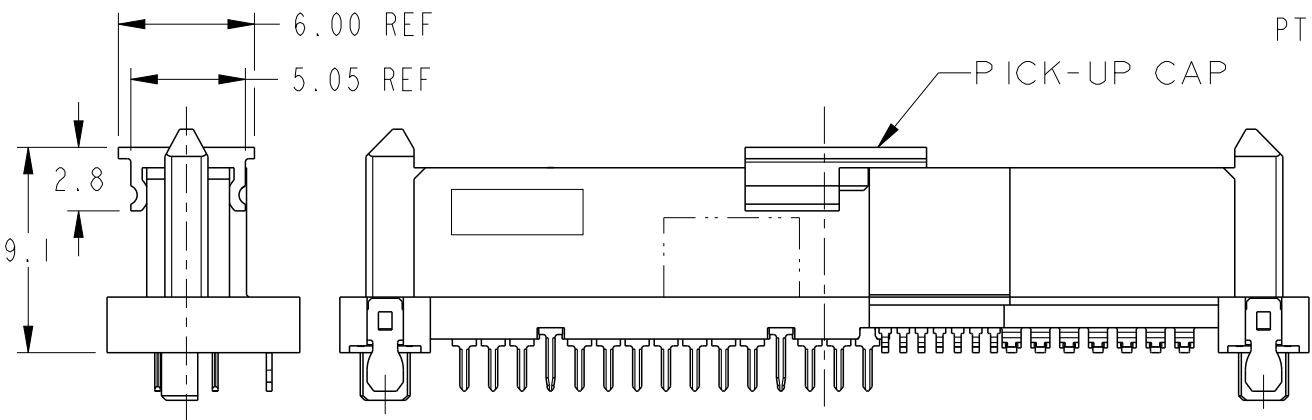
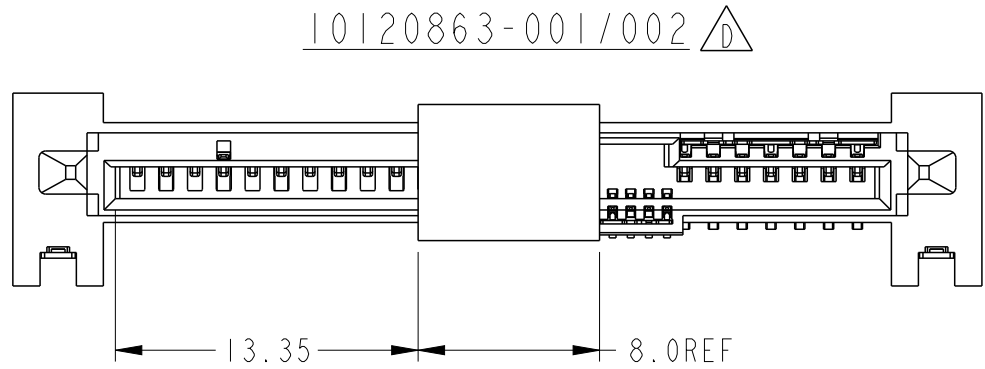
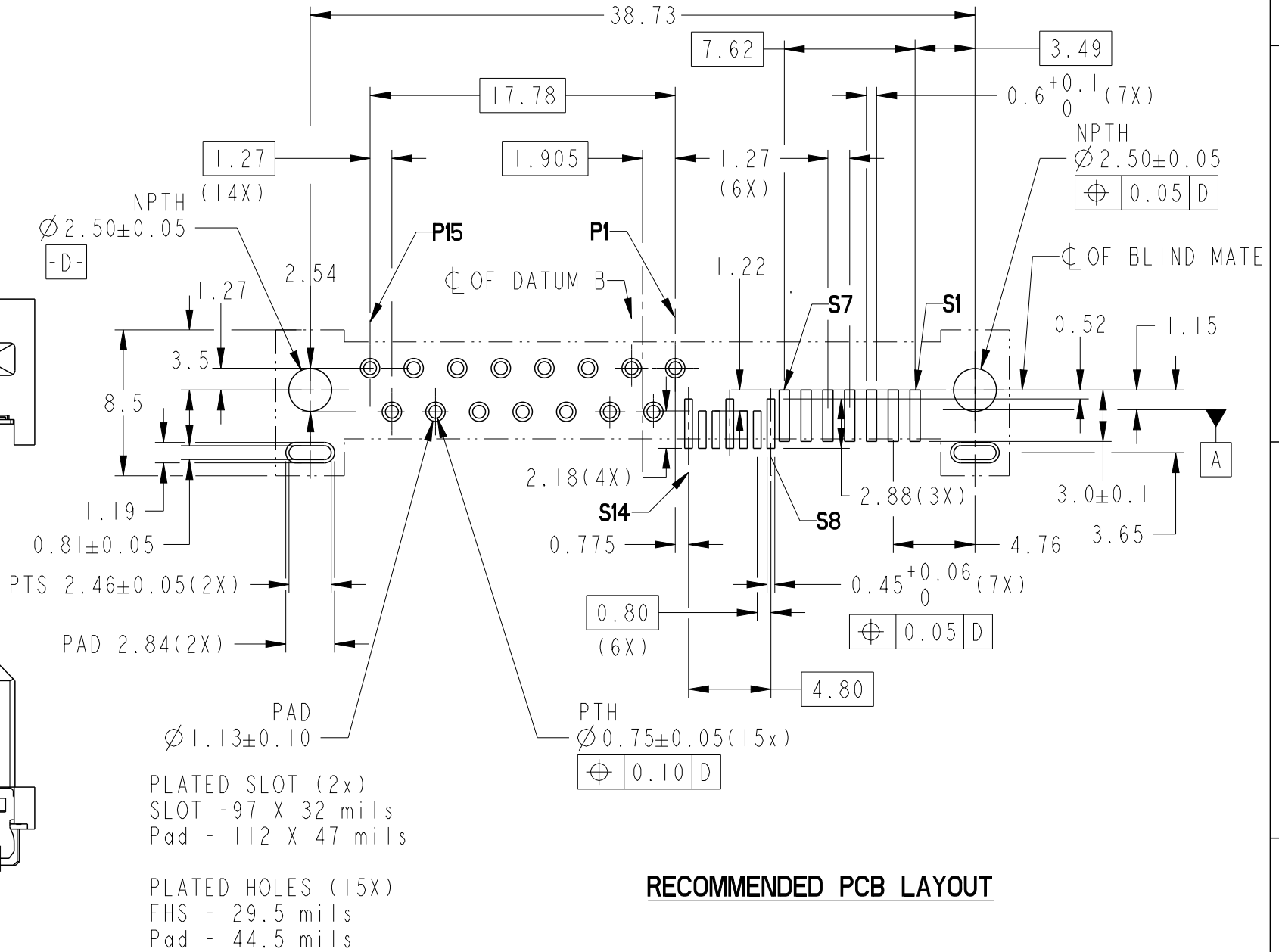
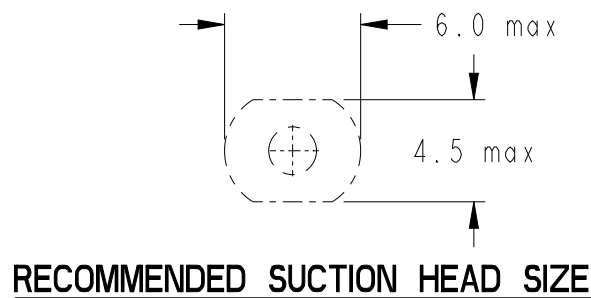


PRODUCT NO	DIM L	PICK-UP CAP	RECOMMENDED P.C. BOARD THICKNESS	TYPE OF CLIP	PACKAGING
	(SOLDER TAIL)				
10120863-001LF	1.70	NO	1.57mm (0.062") / 2.36mm (0.093") / 3.43mm (0.135")	METAL BLADE	TRAY
10120863-001CLF		YES			TAPE & REEL
10120863-001C-TRLF		YES			
10120863-002LF	2.10	NO	2.36mm (0.093") / 3.43mm (0.135")	METAL BLADE	TRAY
10120863-002CLF		YES			TAPE & REEL
10120863-002C-TRLF		YES			



PART WITH PICK-UP CAP, SEE NOTE ④



RECOMMENDED PCB LAYOUT

spec ref	-	dr	M Srinivasan	2013/06/19	projection	MM	size	A3	scale	3:1
tolerance std	ISO 1101	eng	Noorhazlinda	2016/11/28	chr	-	ecn no	ELX-M-25293-1	rel level	Released
surface	linear	appr	Koon-Poh Tay	2016/12/16	product family	SAS	rel level	Released	rev	D
ISO 1302	angular	0°	±2°	Amphenol FCI	12G SAS RECEPTABLE WIDE BASE HYBRID TYPE ASSY	cat. no.	-	Product - Customer Drw	sheet 2 of 4	

A

B

C

D

A

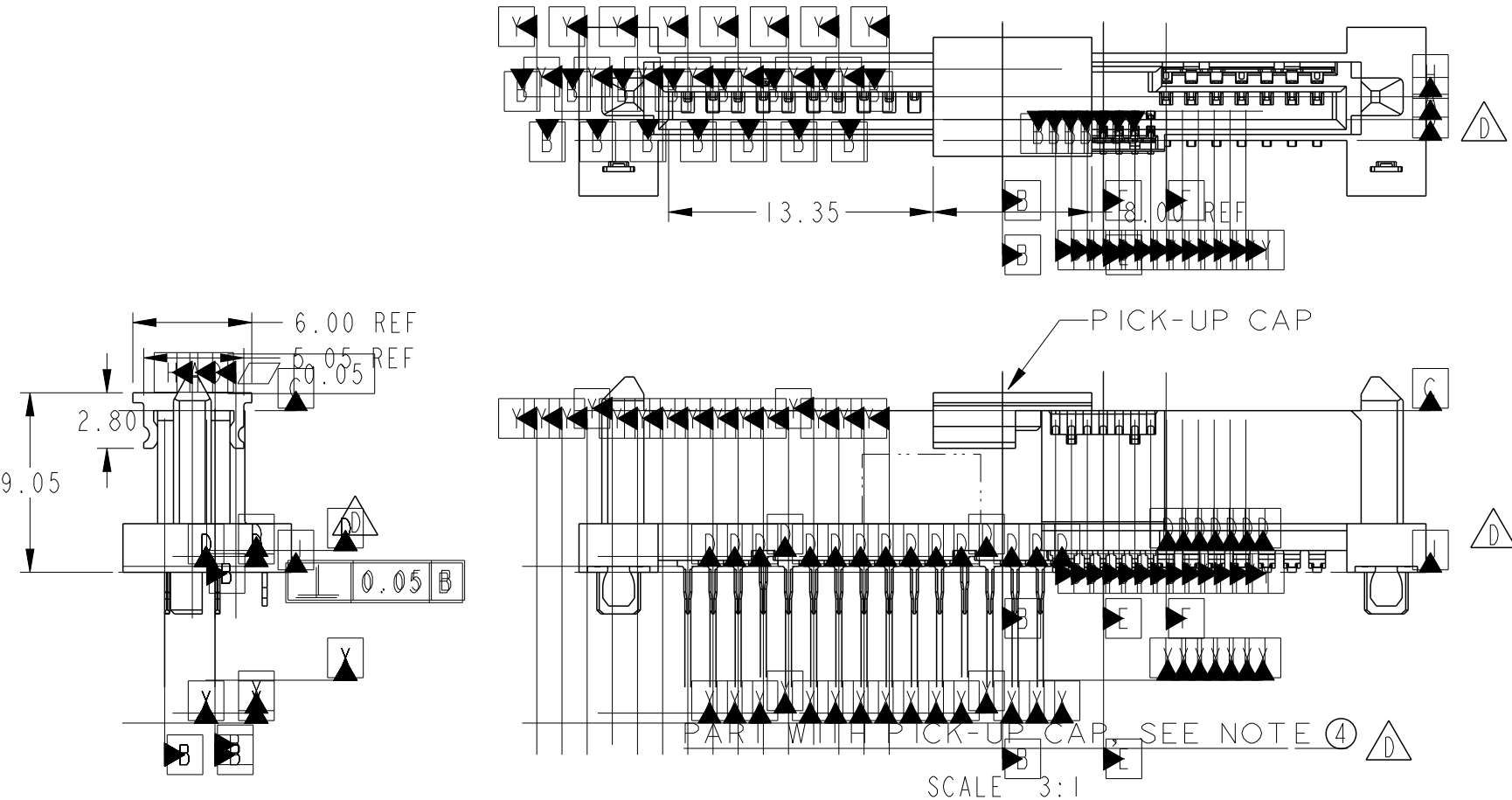
B

C

D

PRODUCT NO	DIM L	PICK-UP CAP	RECOMMENDED P.C. BOARD THICKNESS	TYPE OF CLIP	PACKAGING
	(SOLDER TAIL)				
10120863-003LF	2.10	NO	2.36mm (0.093") / 3.43mm (0.135")	METAL BLADE	TRAY
10120863-003CLF		YES			TAPE & REEL
10120863-003C-TRLF		YES			

10120863-003 (WITH CLOSURE ON HOLD DOWN AREA)



spec ref	-	dr	M Srinivasan	2013/06/19	projection	MM	size	A3	scale	3:1
tolerance std	ISO 1101	eng	Noorhazelinda	2016/11/28	chr	-	ecn no	ELX-M-25293-1	rel level	Released
surface	linear	appr	Koon-Poh Tay	2016/12/16	product family	SAS	rel level	Released	rev	D
ISO 1302	angular	0°	±2°	Amphenol FCI	12G SAS RECEPTABLE WIDE BASE HYBRID TYPE ASSY	cat. no.	-	Product - Customer Drw	sheet 3 of 4	

NOTES:

1 MATERIAL:

1) HOUSING: HIGH TEMP TERMOPLASTIC, UL 94V-0

COLOR: BLACK

2) TERMINAL: COPPER ALLOY

3) HOLD DOWN: COPPER ALLOY

2 FINISH

1) TERMINAL: 30μ" Au PLATING (CONTACT POINT) OVER
50μ" NICKEL

2) SOLDER TAIL: 75μ" min Sn OVER 50μ" NICKEL

3) HOLD DOWN: 75 μ " min Sn OVER 50 μ " NICKEL

3 PER SFF REV 1.3 EXCEPT 0.8mm PITCH BUMP AREA

(4) PART WITH PICK-UP CAP, P/N XXXXXXXXX-XXXX LF

5 THE STD PACKAGING IS IN TRAY

6 FOR TAPE & REEL PACKAGING, SUFFIX "-TR" ADDED AFTER
PRODUCT NUMBER (E.G. XXXXXXXX-XXXC-TRLF)

7 THE HOUSING WILL WITHSTAND EXPOSURE TO 260°C PEAK
TEMPERATURE FOR 10 SECONDS IN A CONVECTION, INFRA-RED
OR VAPOUR PHASE REFLOW OVEN.

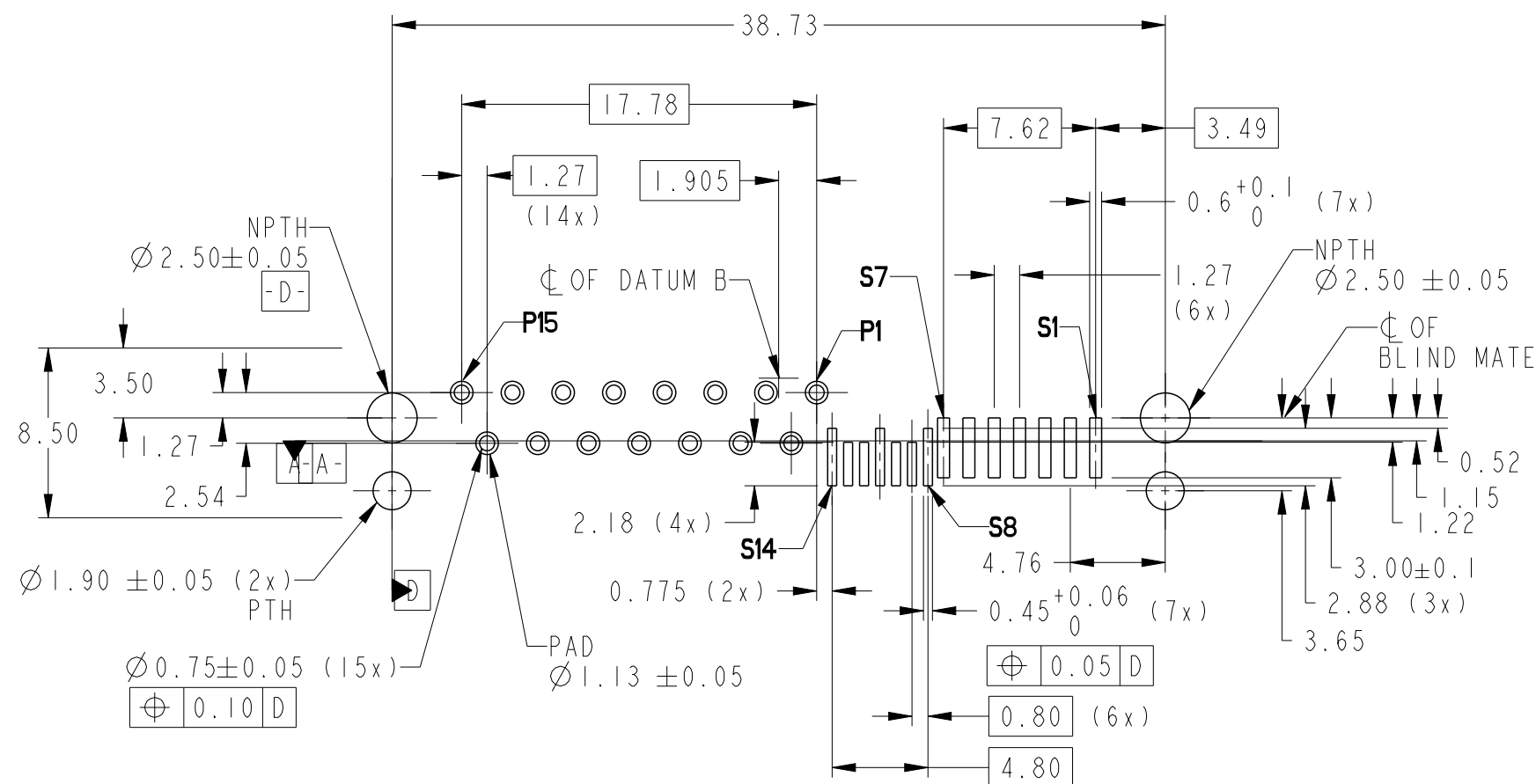
8) THIS PRODUCT MEETS EUROPEAN UNION DIRECTIVES AND
OTHER COUNTRY REGULATIONS AS DESCRIBED IN GS-47-0004

9) PART NUMBERS ENDING IN "LF" MEANS FOR NOTE 8 LEAD FR
IDENTIFICATION

10 A  SYMBOL WILL BE NEXT TO ANY DIMENSION, VIEW OR NOTE
- WHICH HAS BEEN MODIFIED WITH THE CURRENT DRAWING REVISION




(11) DATE CODE LOCATION. DATE CODE NO. YYWWD (E.G. 14225)

12 CORING AT NON FUNCTIONAL AREAS ARE SUBJECT TO CHANGE
WITHOUT NOTICES.



PLATED HOLES (15X)
FHS - 29.5 mils
Pad - 44.5 mils

RECOMMENDED PCB LAYOUT
(WITH ROUND SHAPE PTH FOR CLIP)

spec ref -				dr M Srinivasan 2013/06/19		projection 		MM 		size A3		scale 1:1			
tolerance std ISO 1101				eng Noorhazelinda 2016/11/28						ecn no ELX-M-25293-1					
TOLERANCES UNLESS OTHERWISE SPECIFIED				chr -						rel level Released					
appr Koon-Poh Tay 2016/12/16				product family -											
surface ISO 1302 		linear		Amphenol FCI		title 12G SAS RECEPTABLE WIDE BASE HYBRID TYPE ASSY				dwg no 10120863				rev D	
		0.X ± -													
		0.XX ± .20													
		0.XXX ± -													
angular		0° ± 2°				cat. no. -		Product - Customer Drw				sheet 4 of 4			