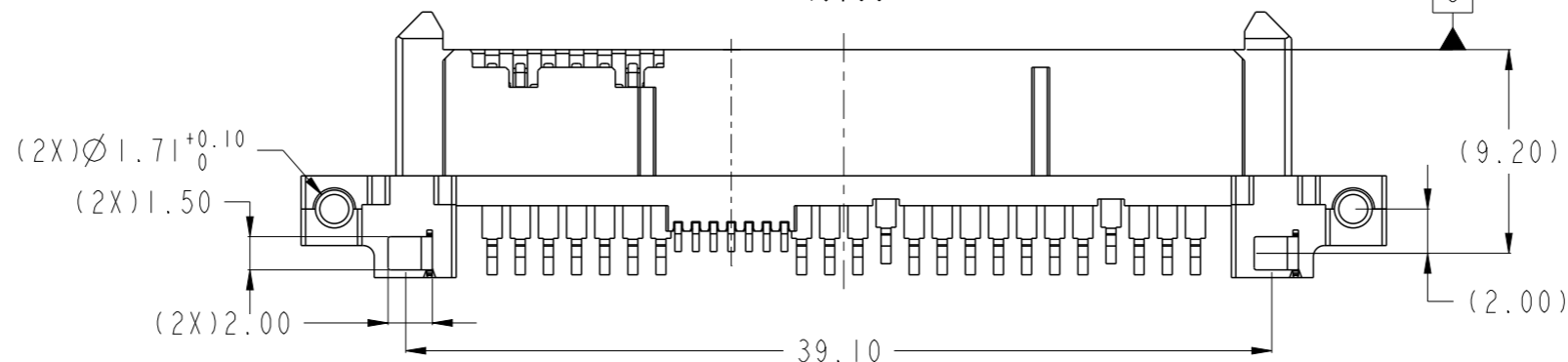
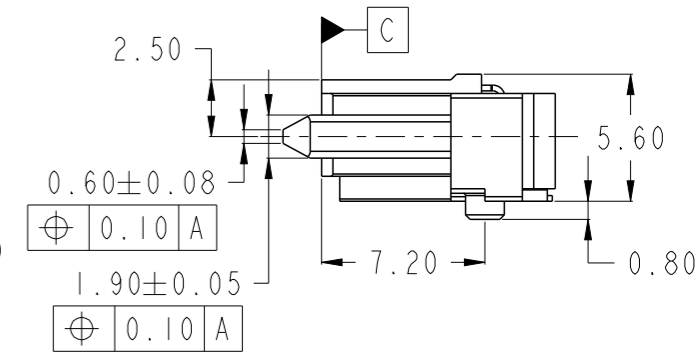
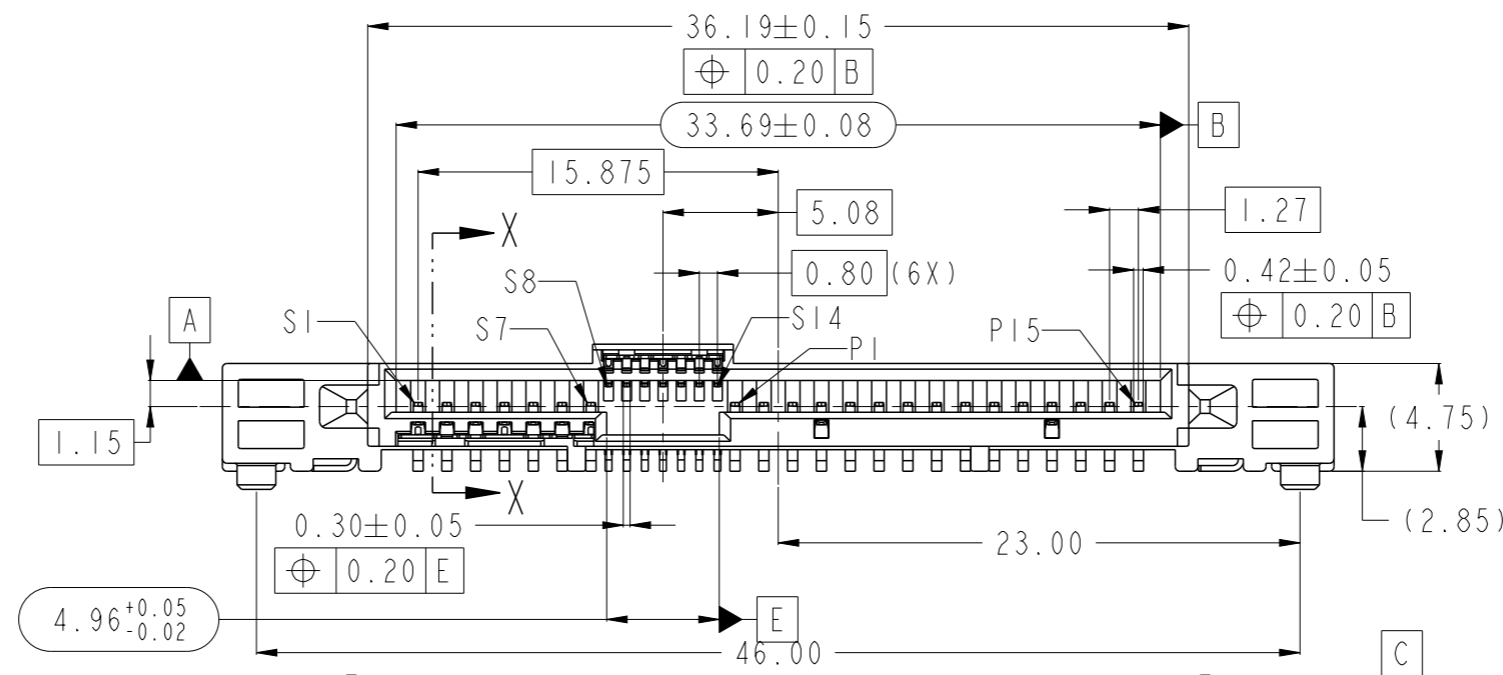
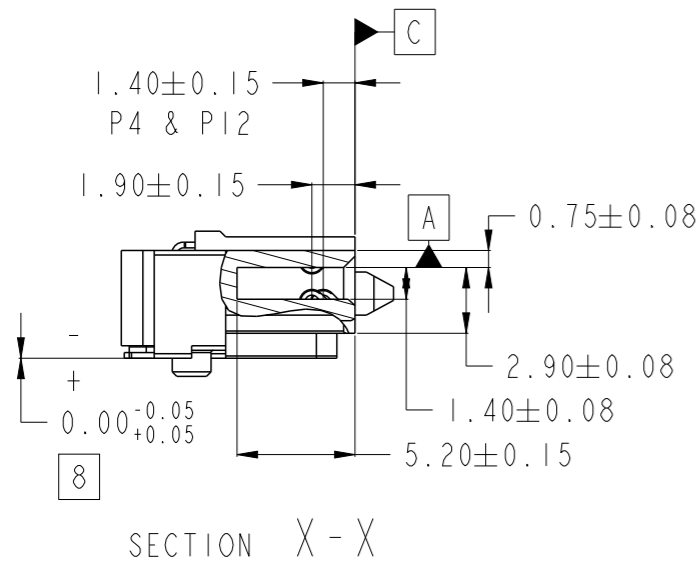
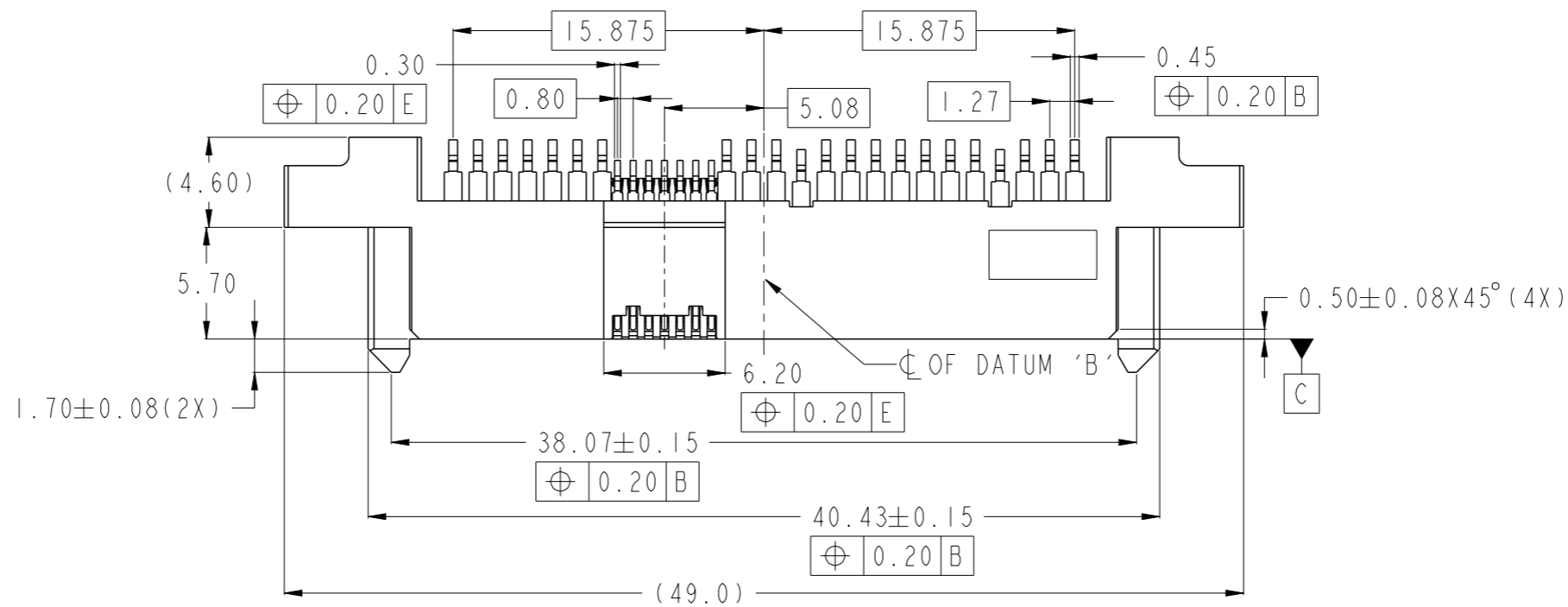


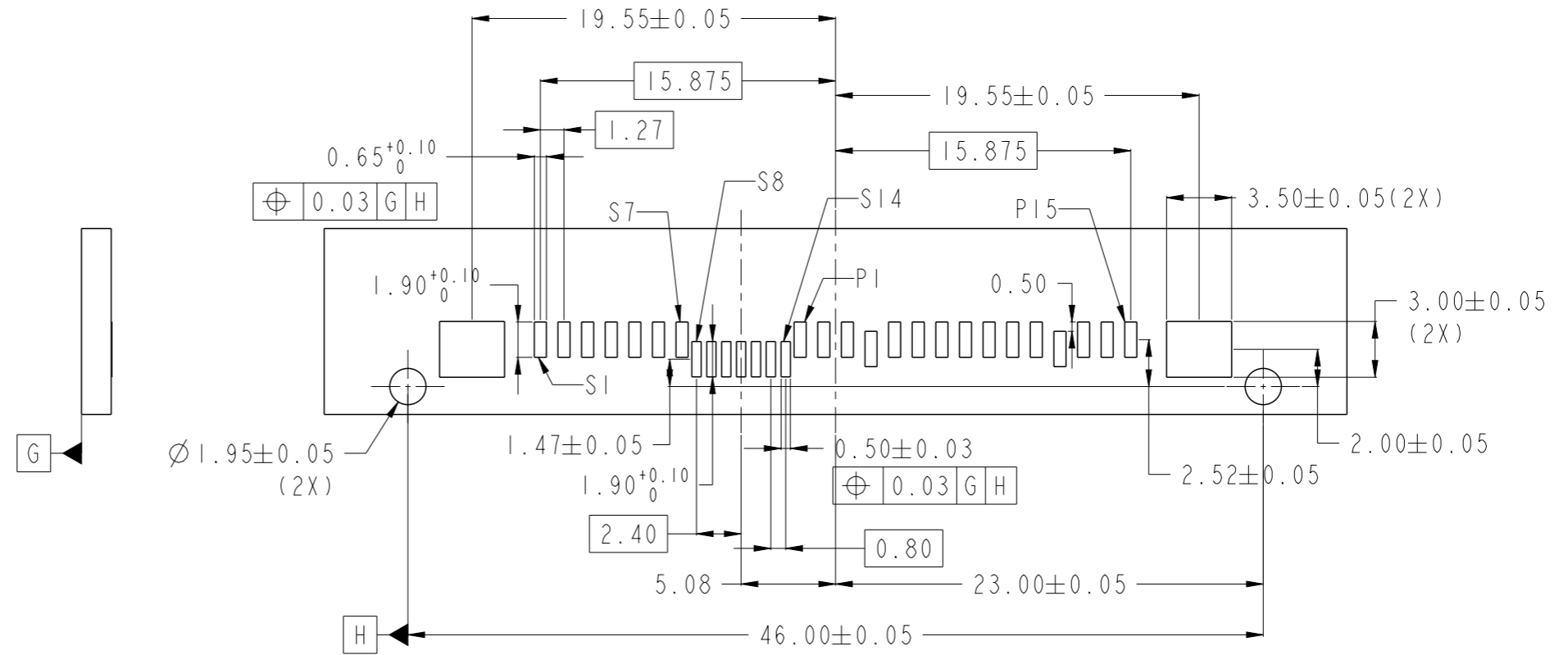
PRODUCT P/N  
SEE TABLE, SHT 2



SCALE 3:1

spec ref	-	dr	Koon-Poh Tay	2015/04/08	projection	mm	size	A3	scale	1:1
tolerance std	ISO 406 ISO 1101	eng	Koon-Poh Tay	2015/06/09			ecn no	-	rel level	Released
surface	ISO 1302	chr	-	apppr			Chen-Hong Tan	2015/06/09	product family	-
linear	0.X ±0.20 0.XX ±0.20 0.XXX ±-			12G SAS RECEPTACLE R/A SMT 2.85mm Z-HEIGHT		dwg no	10124274		rev	A
angular	0° ±2°	www.fci.com		cat. no.	-	Product - Customer Drw		sheet 1 of 2		

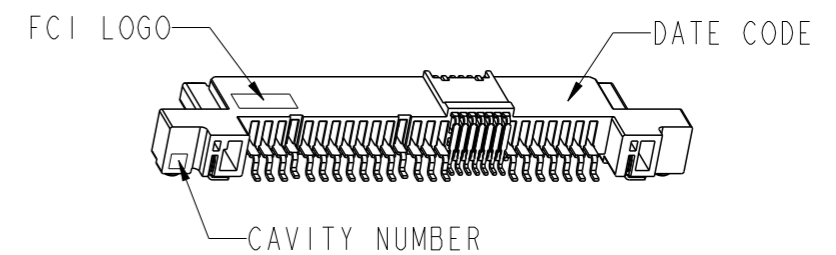
PRODUCT P/N	PACKAGING
10124274-001LF	TRAY
10124274-001TRLF	TAPE & REEL



SCALE 3:1

NOTES:

- MATERIALS:
  - HOUSING: HIGH TEMP THERMOPLASTIC, UL 94V-0, COLOUR: BLACK
  - TERMINAL: COPPER ALLOY
  - HOLD DOWN: COPPER ALLOY
- FINISH:
  - TERMINAL:
    - CONTACT POINT: 30u" MIN Au PLATING OVER 50u" MIN NICKEL
    - SOLDER TAIL: 100u" MIN TIN OVER 50u" MIN NICKEL
  - HOLD DOWN: 100u" MIN TIN OVER 50u" MIN NICKEL
- THE STANDARD PACKAGING IS IN TRAY, UNLESS OTHERWISE SPECIFIED.
- PRODUCT SPECIFICATION: GS-12-282
- THE HOUSING WILL WITHSTAND EXPOSURE TO 260° PEAK TEMPERATURE FOR 10 SECONDS IN A CONVECTION, INFRA-RED OR VAPOR PHASE REFLOW OVEN.
- THIS PRODUCT MEETS EUROPEAN UNION DIRECTIVES AND OTHER COUNTRY REGULATIONS AS DESCRIBED IN GS-47-0004.
- PART NUMBER ENDING IN "LF" DENOTES LEAD FREE.
- ALL SOLDER TAIL MUST BE WITHIN 0.12MM MAX COPLANARITY.
- A  $\triangle$  SYMBOL WILL BE NEXT TO ANY DIMENSION, VIEW, OR NOTE WHICH HAS BEEN MODIFIED WITH THE CURRENT DRAWING REVISION.



spec ref	-	dr	Koon-Poh Tay	2015/04/08	projection	mm	size	A3	scale	1:1	
tolerance std	ISO 406 ISO 1101	eng	Koon-Poh Tay	2015/06/09		← →	ecn no	-	rel level	Released	
TOLERANCES UNLESS OTHERWISE SPECIFIED		chr	-	-							
surface	ISO 1302	appr	Chen-Hong Tan	2015/06/09	product family	-	-		rel level	Released	
	linear	0.X	±0.20		12G SAS RECEPTACLE R/A SMT		dwg no	10124274		rev	A
		0.XX	±0.20		2.85mm Z-HEIGHT						
	angular	0°	±2°		www.fci.com	cat. no.	-	Product - Customer Drw		sheet 2 of 2	