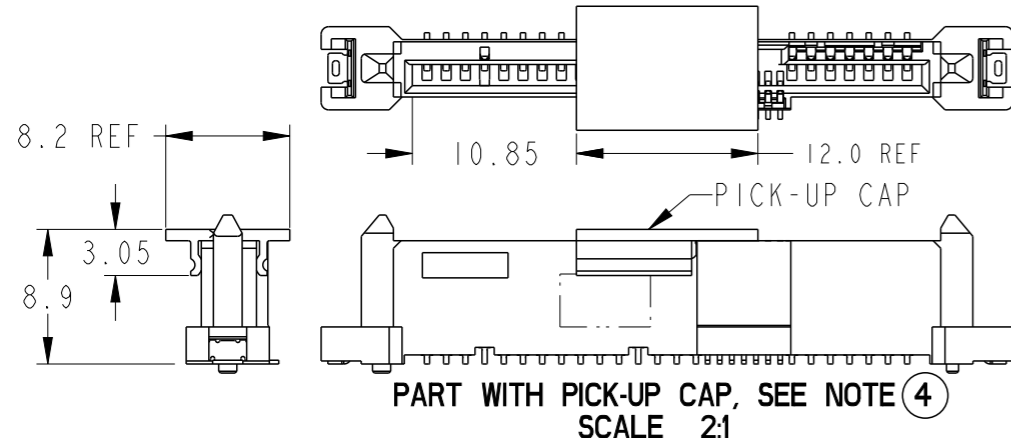
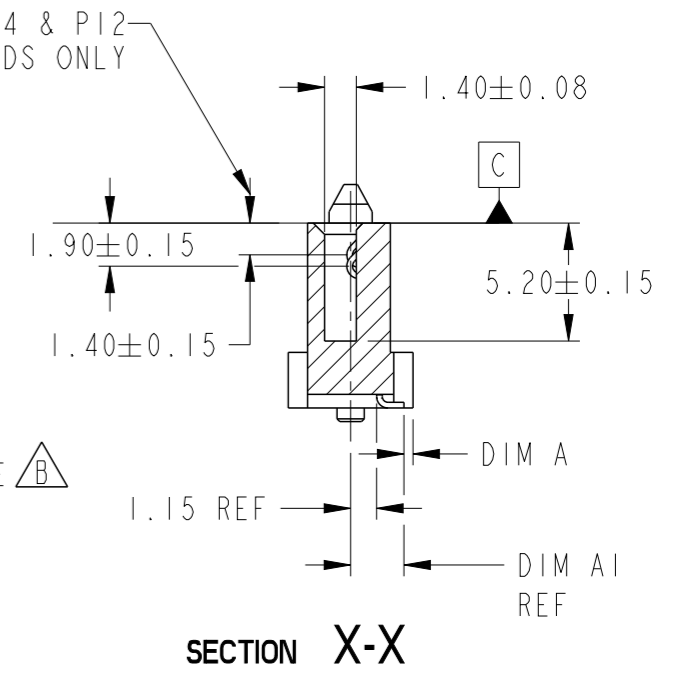
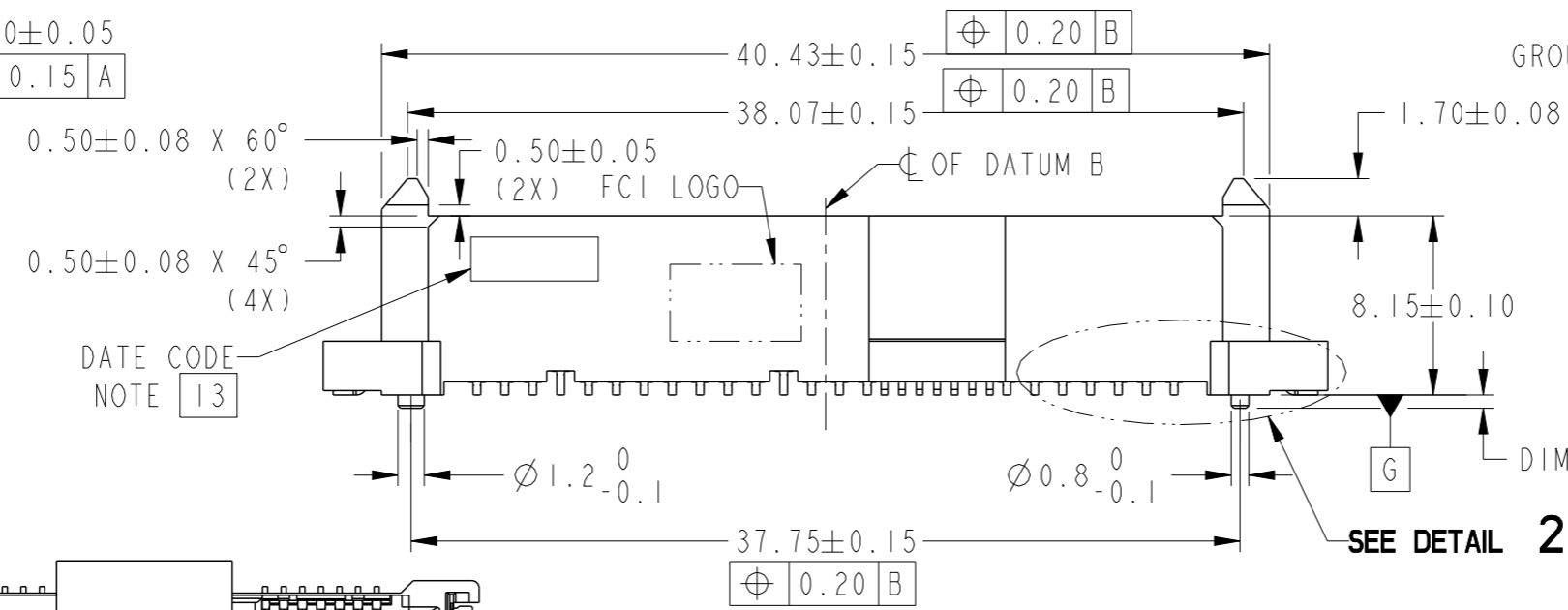
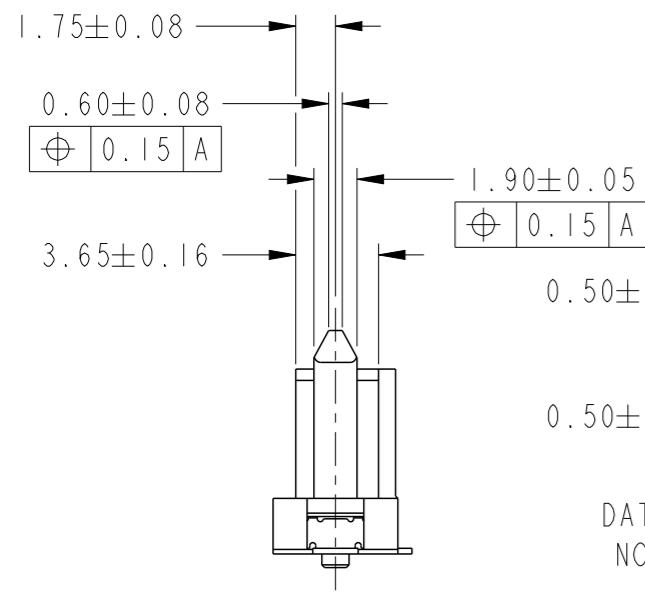
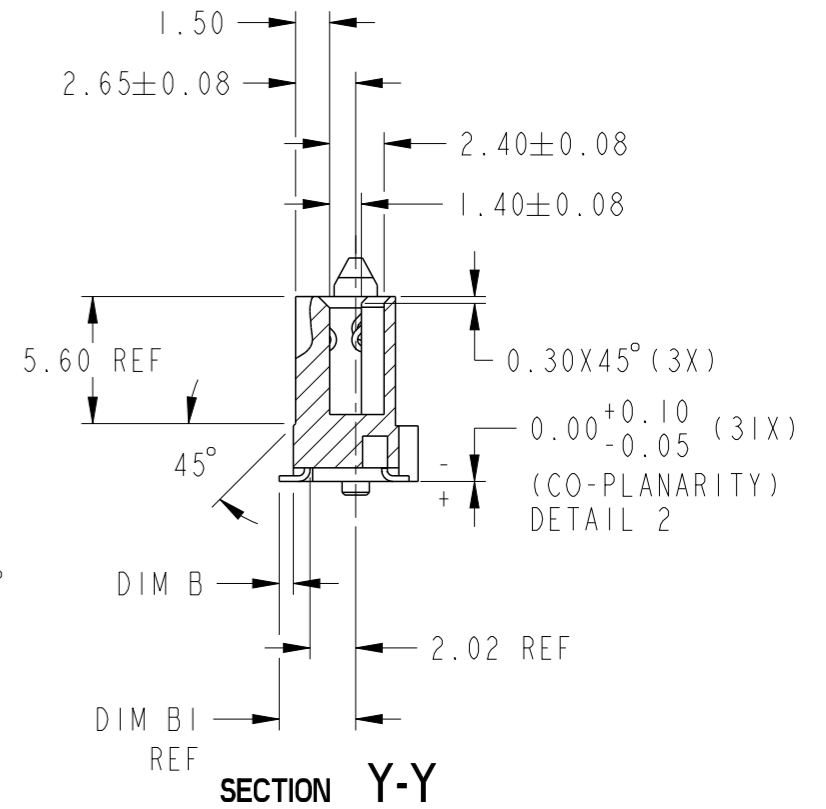
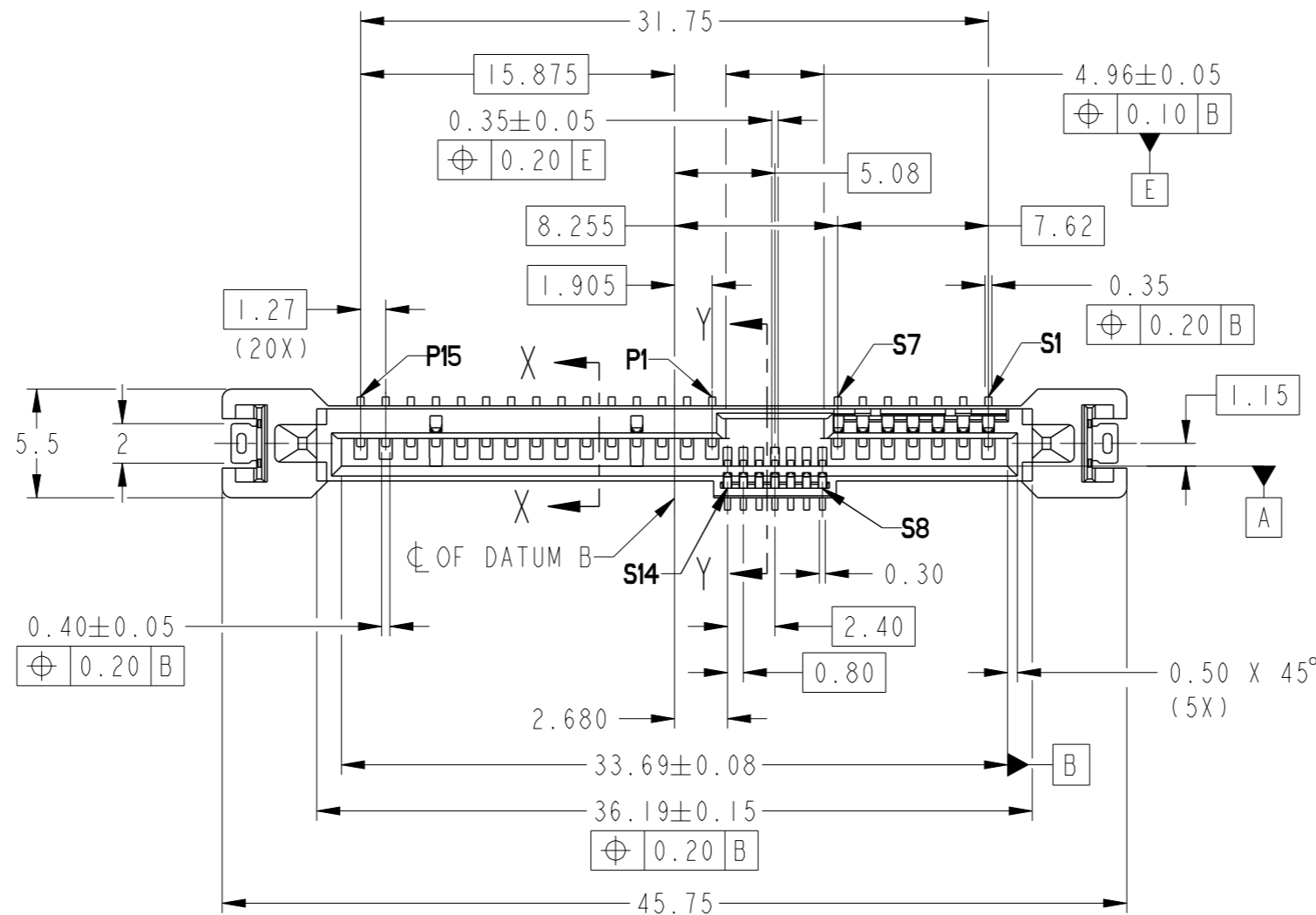


PRODUCT NUMBER
SEE TABLE

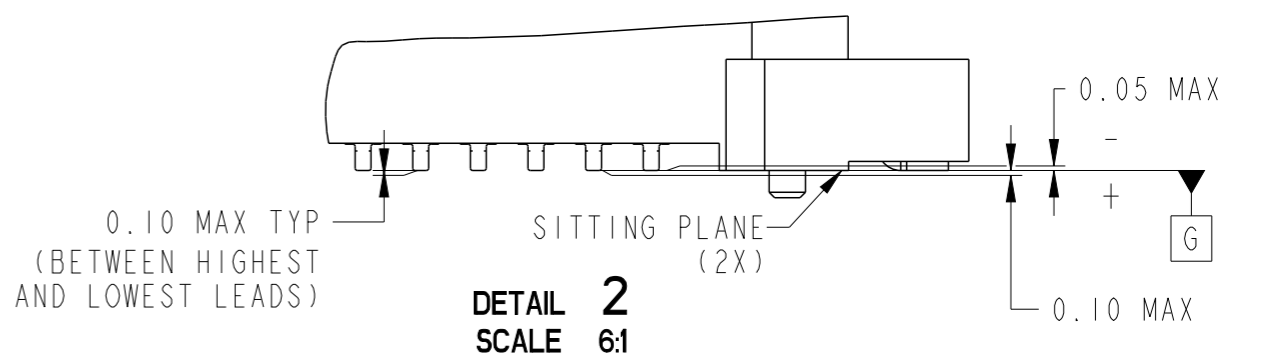
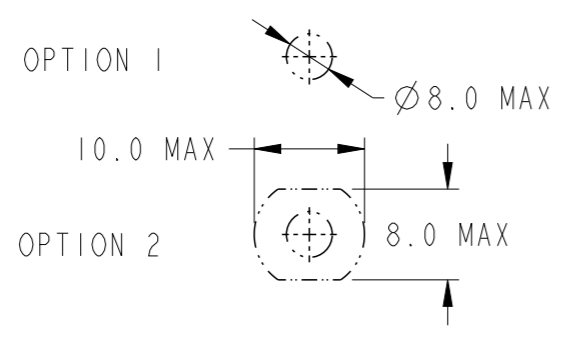
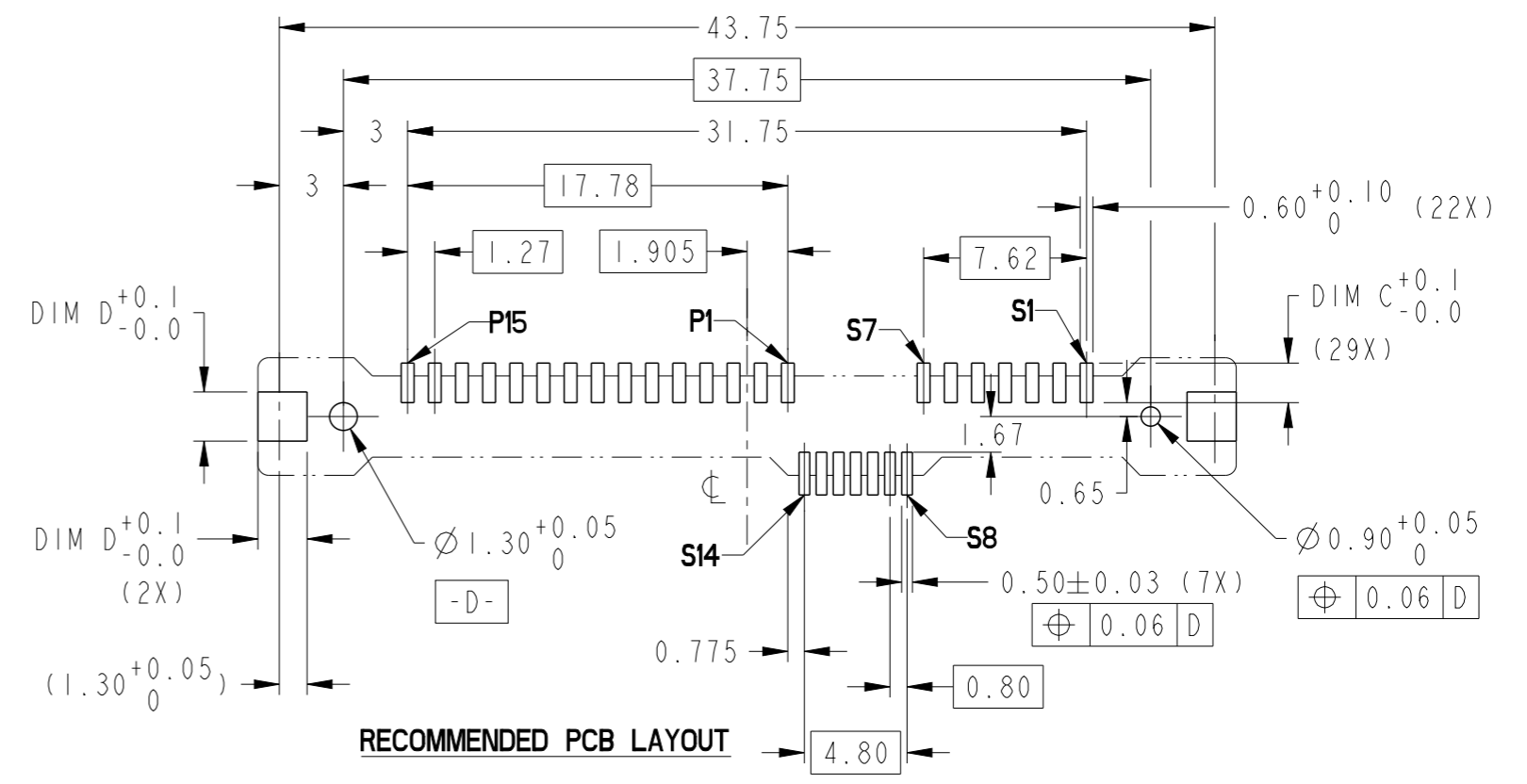


spec ref	-	dr	Vajith P-N	2014/08/08
tolerance std	ISO 406 ISO 1101	eng	Koon-Poh Tay	2016/05/05
surface	linear	chr	-	-
	angular	appr	Chen-Hong Tan	2016/05/27
		TOLERANCES UNLESS OTHERWISE SPECIFIED		
		0.X	±	
		0.XX	±0.20	
		0.XXX	±	
		0°	±2°	

projection	mm	size	A3	scale	3:1
product family	SAS	ecn no	ELX-S-24012-1	rel level	Released
Amphenol FCI		SAS RECEPTACLE		dwg no	10129368
www.fci.com		VERTICAL SMT TYPE ASSY		rev	B
Product - Customer Drw			sheet 1 of 3		

Amphenol FCI
© 2016 AFCI

PRODUCT NUMBER	DIM A	DIM A1 REF	DIM B	DIM B1 REF	DIM C	DIM D	DIM E	METAL CLIP	PLATING	PICK-UP CAP	PACKAGING	REMARKS	PRODUCT NUMBER	PLATING
10129368-001LF	0.4	2.35	0.6	3.37	1.85	2.3	1.0	2 PCS	NOTE 2	NO	TRAY	NOTE 8	10129368-301LF	NOTE 10
YES										NOTE 4 & 8		10129368-301CLF		
YES										NOTE 4 6 & 8		10129368-301C-TRLF		
10129368-003LF	0.3	2.5	0.8	3.52	2.35	2.6	0.6	2 PCS	NOTE 2	NO	TRAY	NOTE 8	10129368-303LF	NOTE 10
YES										NOTE 4 & 8		10129368-303CLF		
YES										NOTE 4 6 & 8		10129368-303C-TRLF		



Amphenol FCI


© 2016 AFCI

spec ref	-	dr	Vajith P-N	2014/08/08	projection	mm	size	A3	scale	3:1
tolerance std	ISO 406 ISO 1101	eng	Koon-Poh Tay	2016/05/05		mm	ecn no	ELX-S-24012-1	rel level	Released
TOLERANCES UNLESS OTHERWISE SPECIFIED		chr	-	2016/05/27						
surface	linear	0.X	±-	Amphenol FCI www.fci.com	SAS RECEPTACLE		dwg no 10129368	rev B		
		0.XX	±0.20		VERTICAL SMT TYPE ASSY					
	angular	0°	±2°		cat. no.	-			Product - Customer Drw	sheet 2 of 3

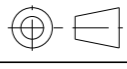
PRODUCT NUMBER

SEE TABLE

NOTES:

- 1. MATERIAL :
 - 1) HOUSING : HIGH TEMP THERMOPLASTIC, UL 94V-0
 - COLOR : BLACK
 - 2) TERMINAL : COPPER ALLOY
 - 3) HOLD DOWN : COPPER ALLOY
- 2 FINISH :
 - 1) TERMINAL : 30μ" Au PLATING (CONTACT POINT) OVER 50μ" NICKEL
 - 2) SOLDER TAIL : 100μ" MIN Sn OVER 50μ" NICKEL
 - 3) HOLD DOWN : 100μ" MIN Sn OVER 50μ" NICKEL
- 3. PER SFF REV 1.1, EXCEPT 0.8mm PITCH BUMP AREA.
- 4 PART WITH PICK-UP CAP, P/N XXXXXXXX-XXXCLF.
- 5 THE STD PACKAGING IS IN TRAY UNLESS OTHERWISE SPECIFIED.
- 6 PART NUMBER WITH SUFFIX "-TR" MEANS FOR TAPE & REEL PACKAGING (E.G. P/N: XXXXXXXX-XXXC-TRLF).
- 7. THE HOUSING WILL WITHSTAND EXPOSURE TO 260°C PEAK TEMPERATURE FOR 10 SECONDS IN A CONVECTION, INFRA-RED OR VAPOR PHASE REFLOW OVEN.
- 8. THIS PRODUCT MEETS EUROPEAN UNION DIRECTIVES AND OTHER COUNTRY REGULATIONS AS DESCRIBED IN GS-47-0004.
- 9 PART NUMBERS ENDING IN "LF" MEANS FOR NOTE 8 LEAD FREE IDENTIFICATION
- 10 FINISH :
 - 1) TERMINAL : 30μ" GXT PLATING (CONTACT POINT) OVER 50μ" NICKEL
 - 2) SOLDER TAIL : 100μ" MIN Sn OVER 50μ" NICKEL
 - 3) HOLD DOWN : 100μ" MIN Sn OVER 50μ" NICKEL
- 11. 10129368-X03LF FOOTPRINT IS SAME AS 10120818-X01LF
- 12. A  SYMBOL WILL BE NEXT TO ANY DIMENSION, VIEW, OR NOTE WHICH HAS BEEN MODIFIED WITH THE CURRENT DRAWING REVISION.
- 13 DATE CODE LOCATION. DATE CODE NO. YYWWD (E.G. 14225)

Amphenol FCI
© 2016 AFCI

spec ref -		dr	Vajith P-N	2014/08/08	projection	mm	size	A3	scale	3:1		
tolerance std		eng	Koon-Poh Tay	2016/05/05		← →	ecn no	ELX-S-24012-1				
ISO 406 ISO 1101		chr	-	-				rel level	Released			
surface		appr	Chen-Hong Tan	2016/05/27	product family		SAS	10129368				
ISO 1302	linear	0.X		± -	Amphenol FCI	SAS RECEPTACLE		www.fci.com	cat. no.	-	Product - Customer Drw	sheet 3 of 3
		0.XX		±0.20		VERTICAL SMT TYPE ASSY						
angular		0°		±2°			dwg no					