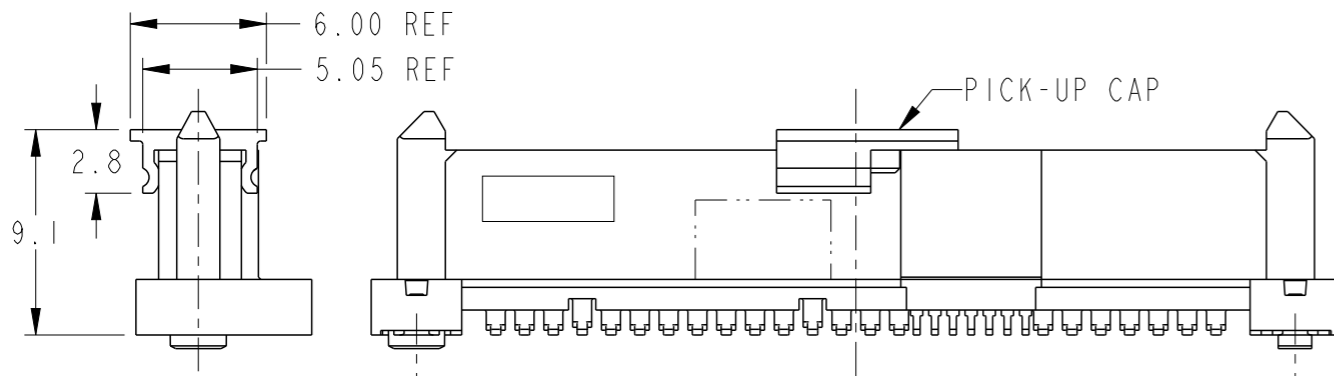
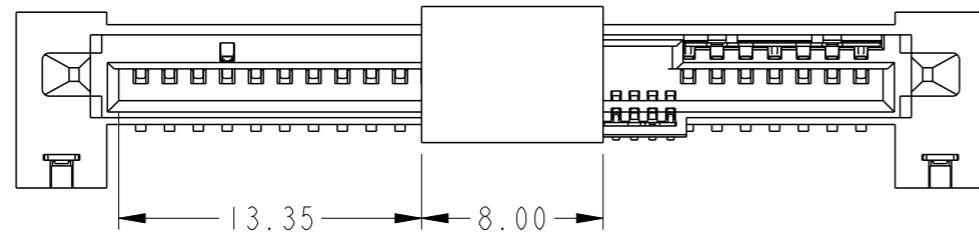
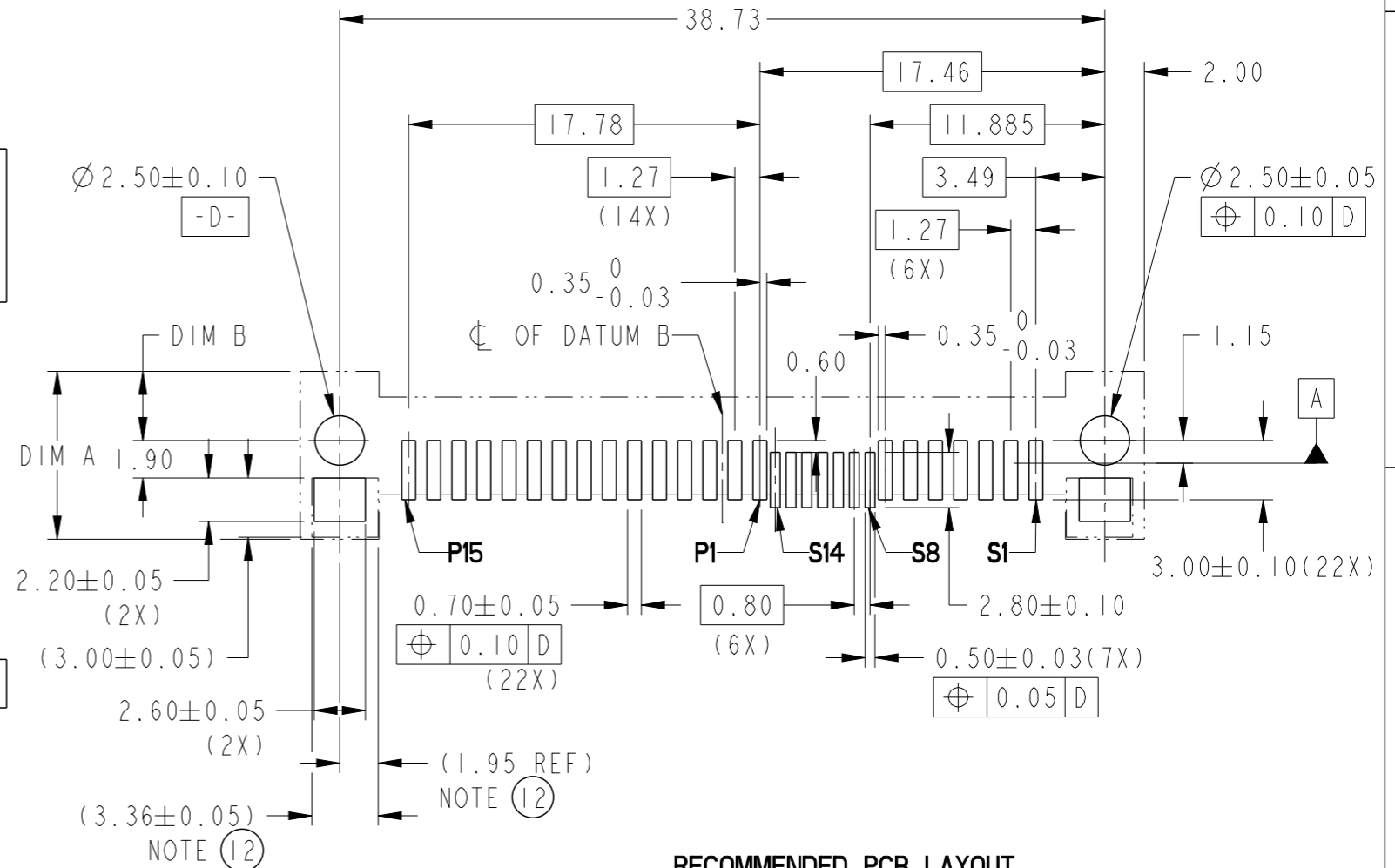


PRODUCT NO	DIM A	DIM B	DIM L	RECOMMENDED P.C. BOARD THICKNESS	PICK-UP CAP	PACKAGING	REMARK
10130433-004LF	7.50	2.50	0.60	1.57mm (0.062")	NO	TRAY	--
10130433-004CLF					YES		
10130433-004C-TRLF					YES	TAPE & REEL	

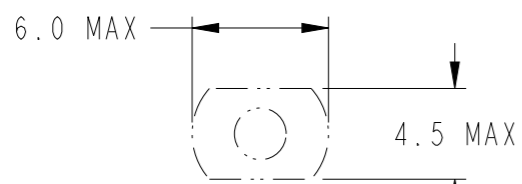


PART WITH PICK-UP CAP, SEE NOTE ⑤



RECOMMENDED PCB LAYOUT

SCALE 3:1



RECOMMENDED SUCTION HEAD SIZE

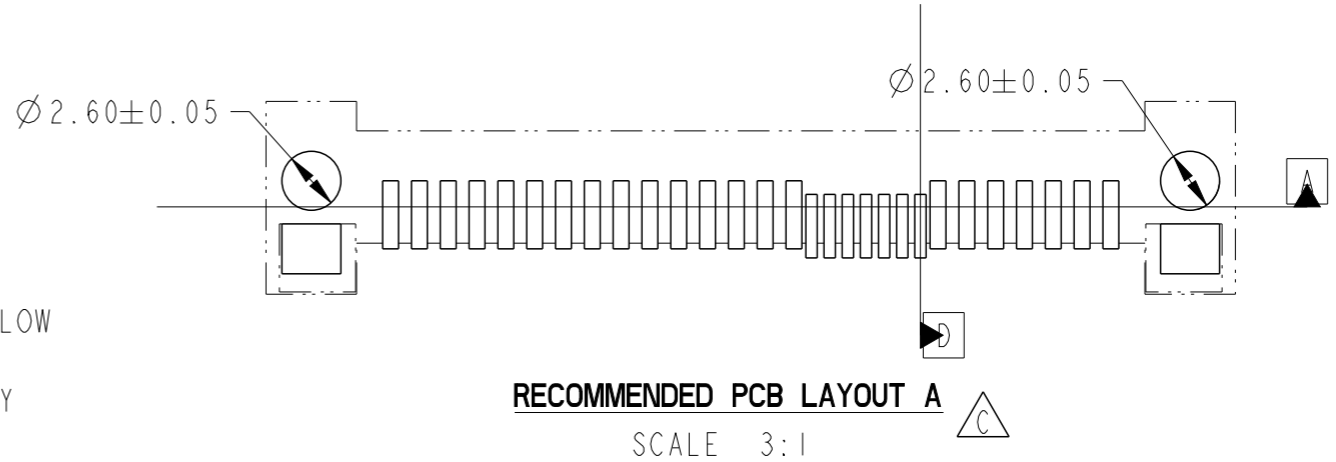
spec ref	-	dr	M Srinivasan	2014/11/20	projection	MM	size	A3	scale	3:1	
tolerance std	ISO 406 ISO 1101	eng	Noorhazelinda	2016/11/23			ecn no	ELX-M-25412-1			
TOLERANCES UNLESS OTHERWISE SPECIFIED		chr	-	-			rel level	Released			
surface	linear	appr	Koon-Poh Tay	2016/12/01	product family	SAS	rel level	Released			
	angular	0°	±2°		12G SAS RECEPTACLE WIDE BASE SMT TYPE ASSY		cat. no.	-	Product - Customer Drw	sheet 2 of 3	
		0.X	±-		Amphenol FCI	dwg no	10130433			rev	C
		0.XX	±.10								
		0.XXX	±-								

PRODUCT NUMBER
SEE TABLE

NOTES:

1. MATERIAL:
 - 1) HOUSING: HIGH TEMP TERMOPLASTIC, UL 94V-0
COLOR : BLACK
 - 2) TERMINAL: COPPER ALLOY
 - 3) HOLD DOWN: COPPER ALLOY
2. FINISH:
 - 1) TERMINAL: 30μ" Au PLATING (CONTACT POINT)
OVER 50μ" NICKEL
 - 2) SOLDER TAIL: 50μ" MIN Sn OVER 50μ" MIN NICKEL
 - 3) HOLD DOWN: 50μ" MIN Sn OVER 50μ" MIN NICKEL
3. THE DIM. IS MEASURED AT P.C. BOARD SITTING PLANE
4. PER SFF REV 1.3 EXCEPT 0.8mm PITCH BUMP AREA
5. PART WITH PICK-UP CAP, P/N XXXXXXXX-XXXCLF
6. THE STD PACKAGING IS IN TRAY
7. THE TAPE & REEL PACKAGING, SUFFIX "-TR" ADDED AFTER
PRODUCT NUMBER (E.G. XXXXXXXX-XXXC-TRLF)
8. THE HOUSING WILL WITHSTAND EXPOSURE TO 260°C PEAK TEMPERATURE
FOR 10 SECONDS IN A CONVECTION, INFRA-RED OR VAPOR PHASE REFLOW
OVEN.
9. THIS PRODUCT MEETS EUROPEAN UNION DIRECTIVES AND OTHER COUNTRY
REGULATIONS AS DESCRIBED IN GS-47-0004.
10. PART NUMBERS ENDING IN "LF" MEANS FOR NOTE 8 LEAD FREE IDENTIFICATION
11. A $\triangle C$ SYMBOL WILL BE NEXT TO ANY DIMENSION, VIEW, OR NOTE WHICH HAS
BEEN MODIFIED WITH THE CURRENT DRAWING REVISION.
12. THE GROUND PAD SIZES SHOWN IN () IS THE COMPETITOR DESIGN FOR REF.
13. DATE CODE LOCATION. DATE CODE NO.YYWW (E.G.14225).
14. CORING AT NON FUNCTIONAL AREAS ARE SUBJECT TO CHANGE WITHOUT NOTICES.

UNSPECIFIED DIMENSIONS REFER TO SHEET 2



Amphenol
FCi

© 2016 AFCI

spec ref	-	dr	M Srinivasan	2014/11/20	projection	MM	size	A3	scale	3:1	
tolerance std	ISO 406 ISO 1101	eng	Noorhazelinda	2016/11/23			ecn no	ELX-M-25412-1			
TOLERANCES UNLESS OTHERWISE SPECIFIED		chr	-	-			product family	SAS	rel level	Released	
surface	linear	appr	Koon-Poh Tay	2016/12/01	12G SAS RECEPTACLE		dwg no	10130433		rev	C
	angular				WIDE BASE SMT TYPE ASSY		Product - Customer Drw		sheet 3 of 3		
					cat. no.	-					