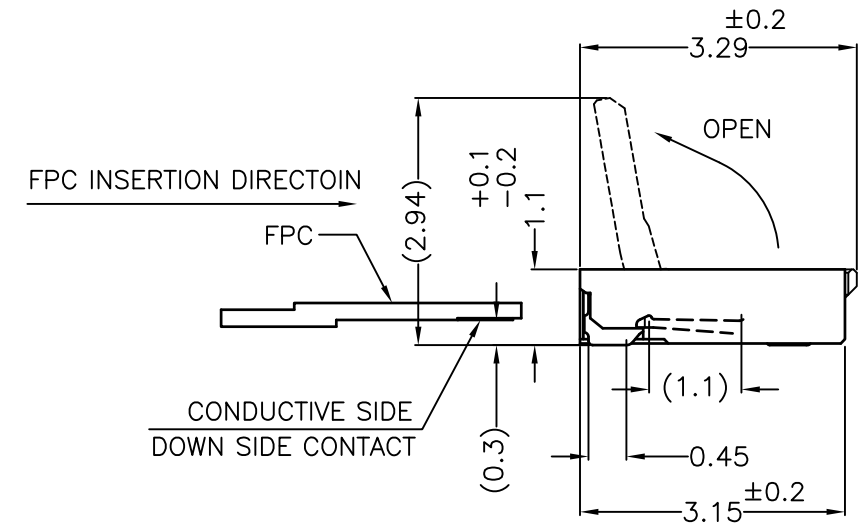
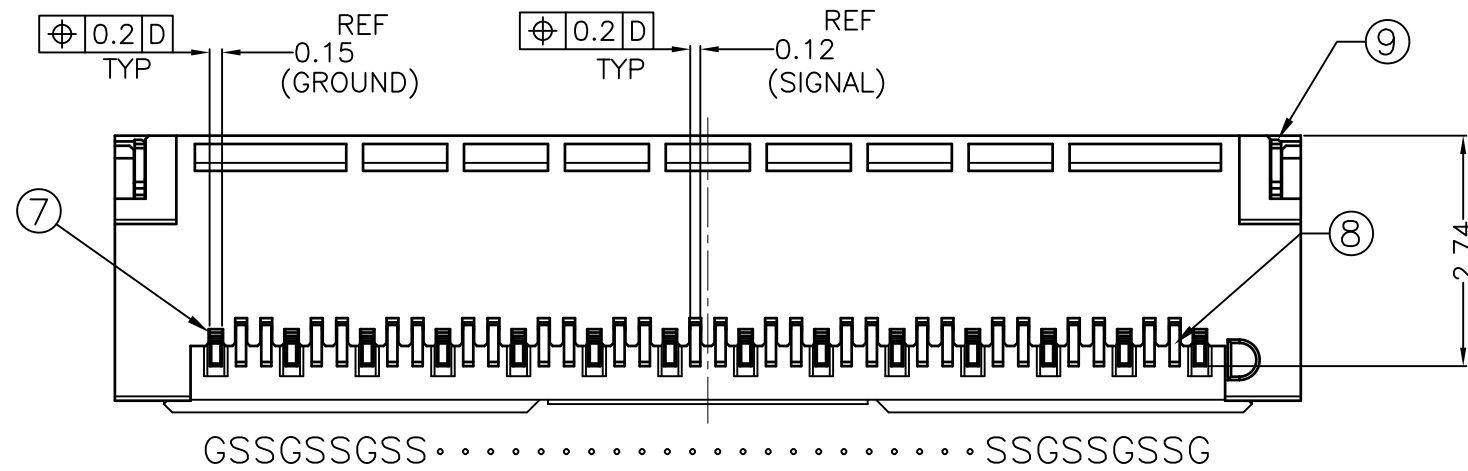
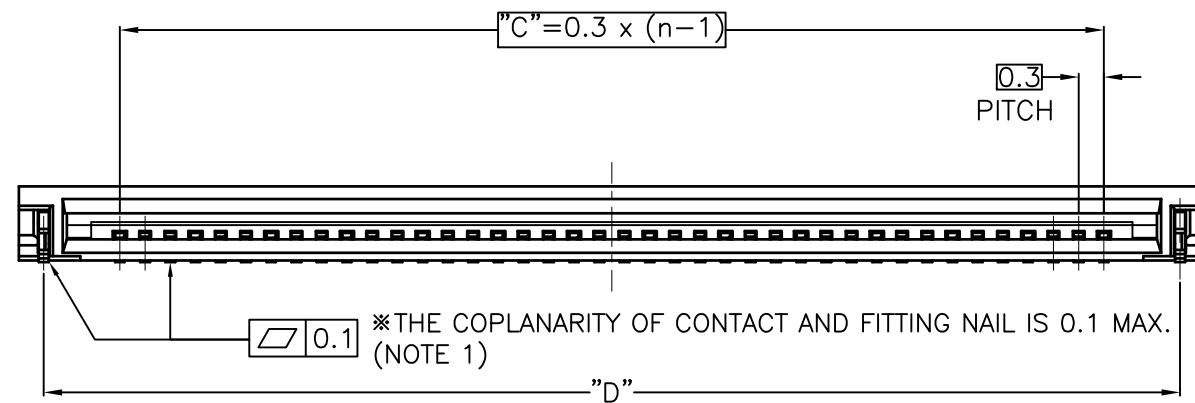
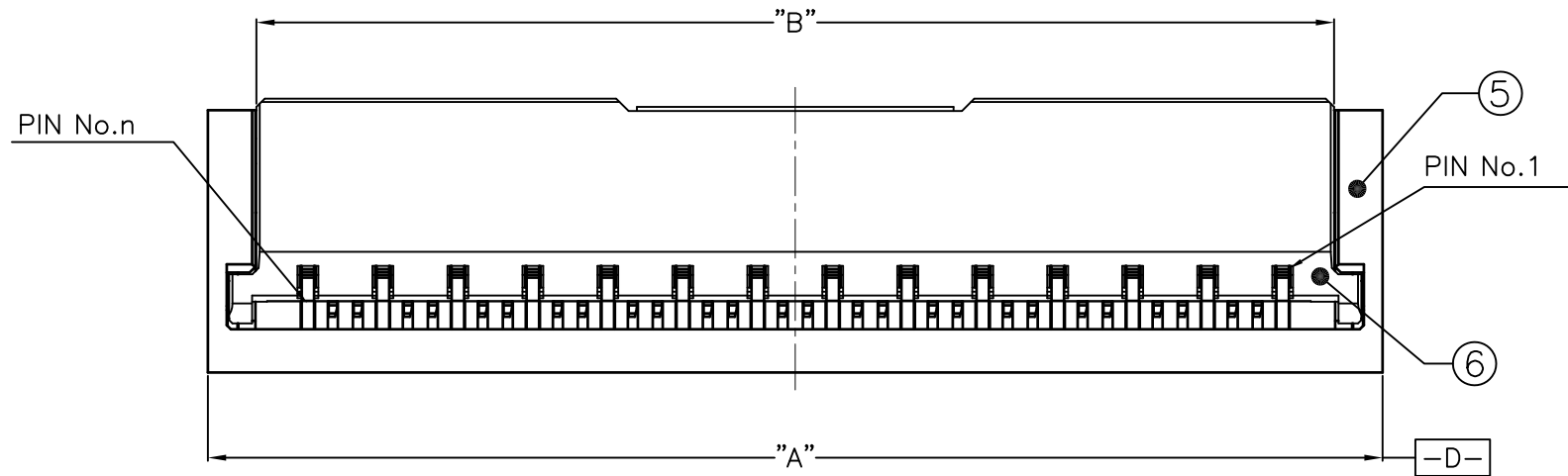
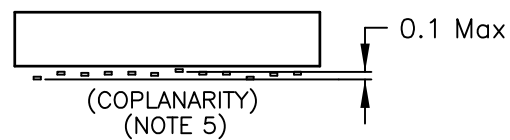


CONNECTOR ASSY

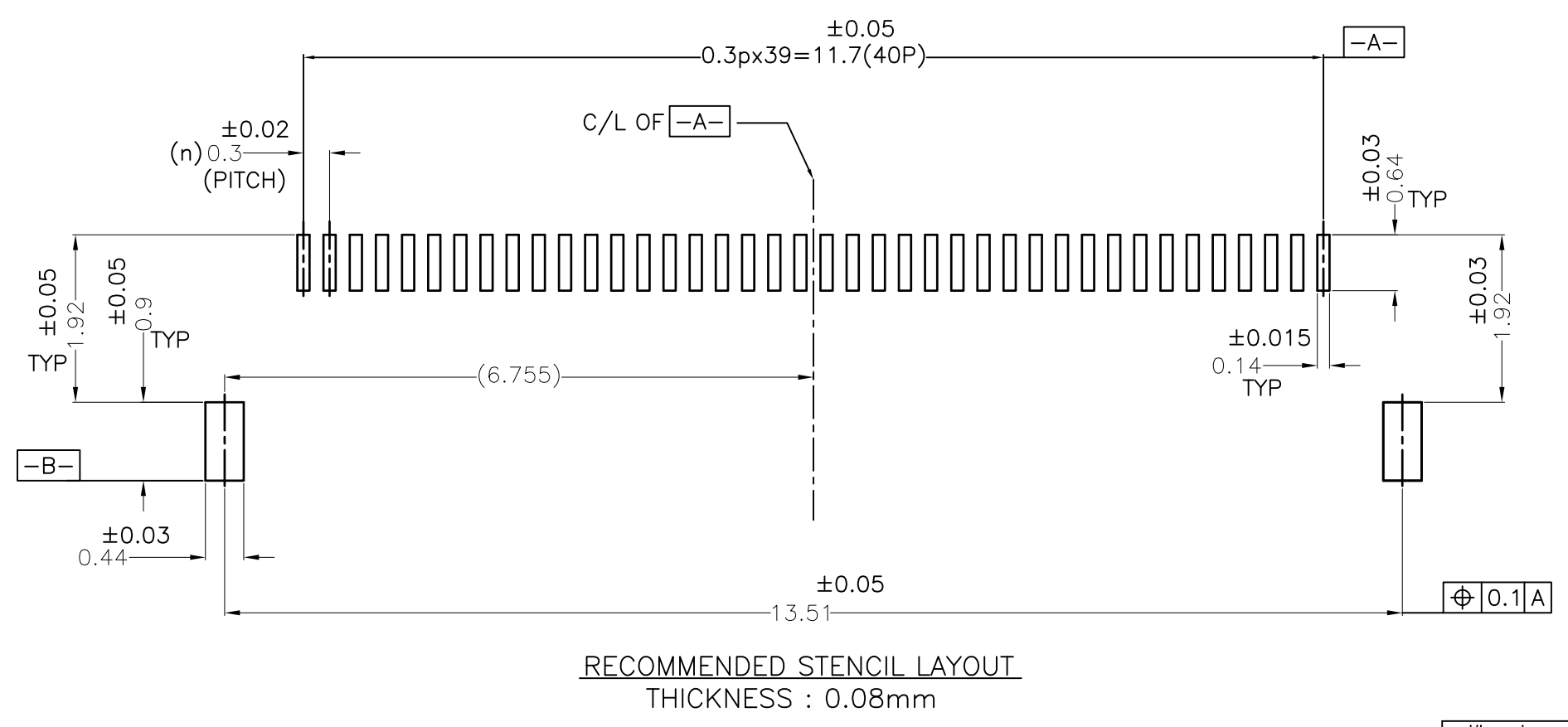
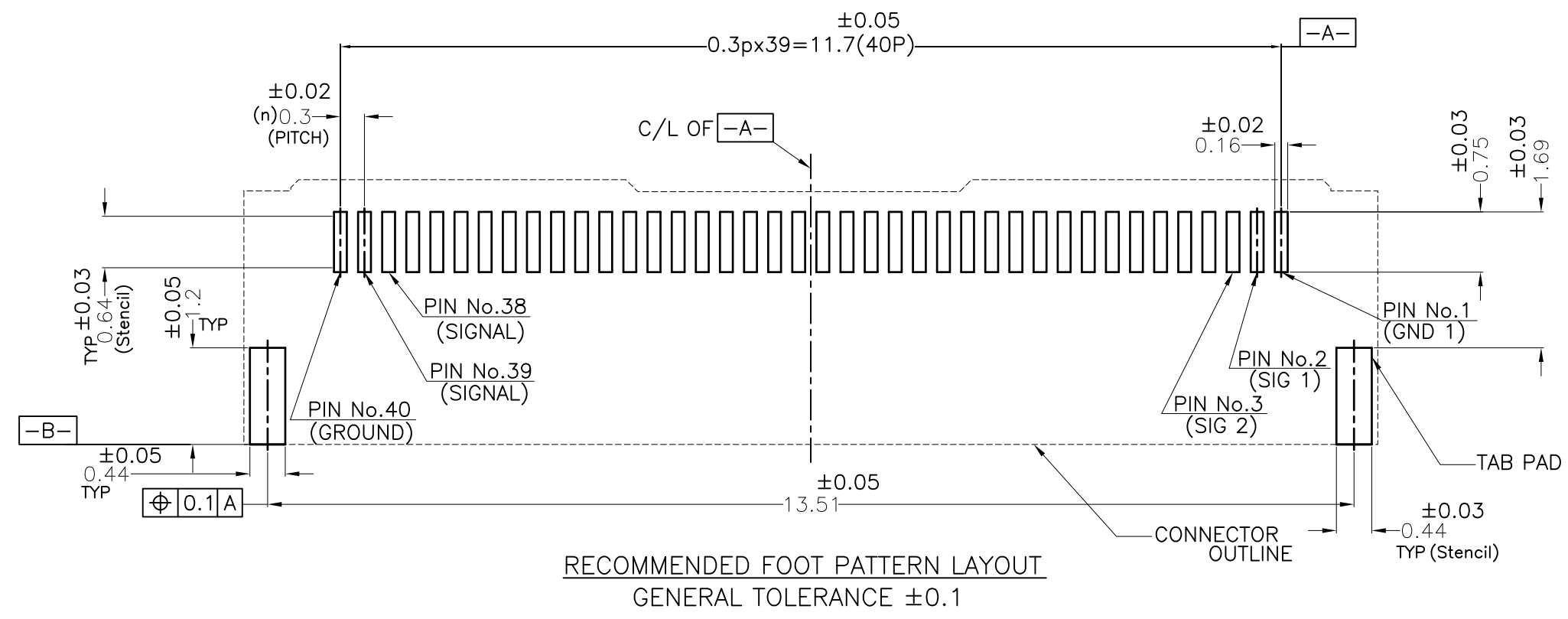


PARTS TABLE (CONNECTOR)			n=Number of Contacts
No.	PART NAME	QTY.	NOTE
5	HOUSING	1	HIGH TEMP THERMOPLASTIC LCP XXXXXXXXXX COLOR : BLACK , UL94V-0, HALOGEN FREE
6	ACTUATOR	1	HIGH TEMP THERMOPLASTIC PPS XXXXXXXXXX COLOR : BLACK , UL94V-0, HALOGEN FREE
7	GROUND CONTACT	14	COPPER ALLOY (CORSON ALLOY) CONTACT AREA : Au 0.05um MIN SOLDERING AREA : Au 0.05um MIN UNDER PLATING : Ni 3±2um ALL OVER
8	SIGNAL CONTACT	26	COPPER ALLOY (PHOSPHOR BRONZE) CONTACT AREA : Au 0.05um MIN SOLDERING AREA : Au 0.05um MIN UNDER PLATING : Ni 3±2um ALL OVER
9	FIXING TAB	2	COPPER ALLOY (PHOSPHOR BRONZE) TIN PLATING 2~5um UNDER PLATING : Ni 3±2um ALL OVER

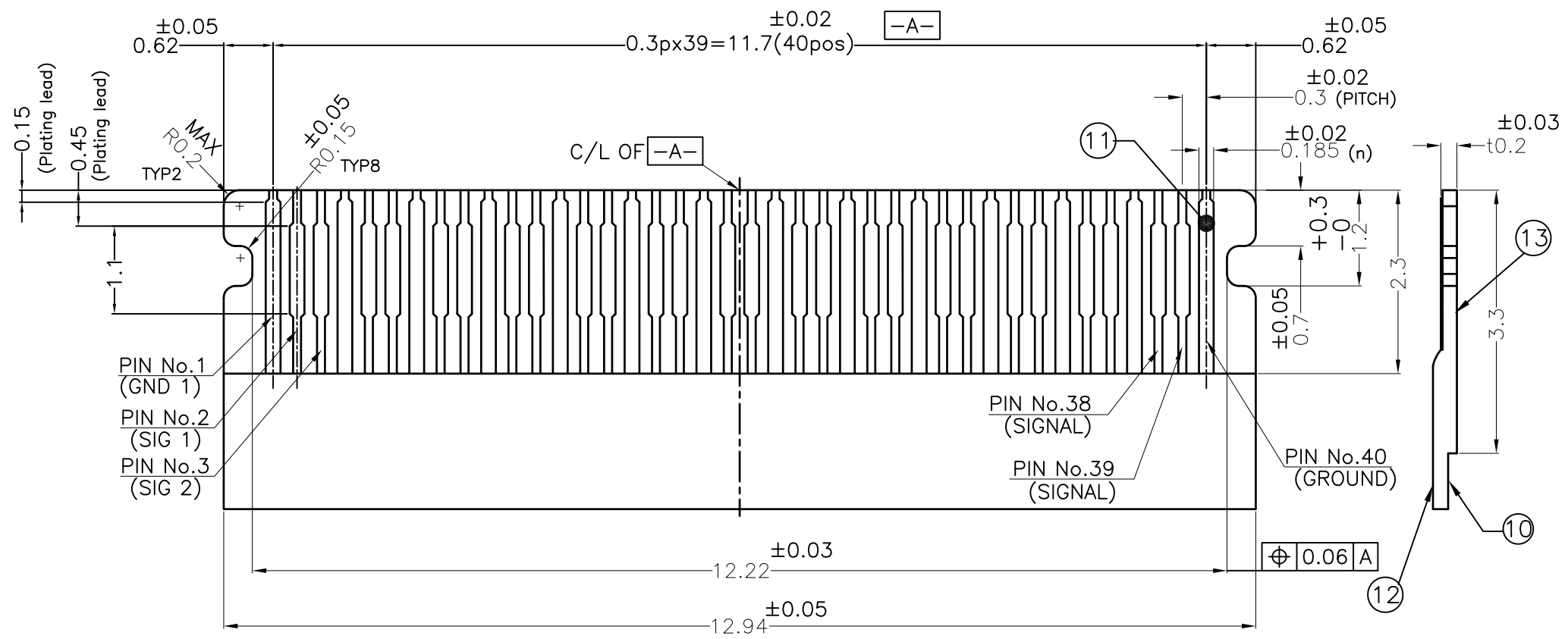
- NOTE
- CONTACT COPLANARITY : 0.1 MAX.
 - This product meets European Union Directives and other country regulations as described in GS-47-0004
 - THIS HOUSING WILL WITHSTAND EXPOSURE TO 260DegC PEAK TEMPERATURE FOR 10 SECONDS IN A CONVECTION, INFRA-RED OR VAPOR PHASE REFLOW OVEN.



AVAILABLE	40	13.51	11.7	12.935	14.1	10131287-40HSAHLF
TOOLING STATUS	No.of Cont	DIM "D"	DIM "C"	DIM "B"	DIM "A"	PRODUCT NO.
mat'l. code	surface	tolerance	projection	product family		
---	ISO 1302	ISO 406	ISO 1101	58WF		
lfr	ecn no	dr	date	title		
A	N.S	2015-09-14		0.3mm PITCH HSFFPC CONNECTOR ASSY		
B	ELX-J-23664	N.S	2016-03-30	(XXXXX SERIES)		
				dwg no		
				sheet 2 of 4		
				size		
				A2		
				type		
				PRODUCT CUSTOMER Drawing		
sheet	revision					Rev.
index	sheet					B



mat'l. code		surface		tolerance		projection		product family	
---		ISO 1302		ISO 406		ISO 1101		58WF	
lfr		ecn no		dr		date		title	
A		N.S		2015-09-14		tolerances unless otherwise specified		0.3mm PITCH HSFPD CONNECTOR ASSY	
B		ELX-J-23664		N.S		2016-03-30		(XXXXX SERIES)	
				dr		N.SASAME 2016-03-30		dwg no	
				enr		N.SASAME 2016-03-30		sheet 3 of 4	
				chr		H.SUZUKI 2016-03-30		size	
				appd		Y.KAMEDA 2016-03-30		A2	
sheet		revision						type	
index		sheet						PRODUCT CUSTOMER Drawing	
								Rev. B	



RECOMMENDED FPC PATTERN LAYOUT
GENERAL TOLERANCE ±0.1

PARTS TABLE (FPC)

No.	PART NAME	MATERIAL
⑩	BASE FILM	POLYIMIDE
⑪	CONDUCTOR	COPPER FOIL (PLATING : Au 0.1um)
⑫	OVER LAY	POLYIMIDE
⑬	STIFFENER BOARD	POLYIMIDE

NOTE
8. ADHESIVE METHOD OF STIFFENER BOARD SHALL BE HEAT CRIMPING METHOD AND THERMOSETTING ADHESIVE SHALL BE USED.

mat'l. code	surface	tolerance	projection	product family
---	ISO 1302 ✓	ISO 406 ISO 1101	mm	58WF
ltr	ecn no	dr	date	tolerances unless otherwise specified
A		N.S	2015-09-14	angles 0.X ±0.3
B	ELX-J-23664	N.S	2016-03-30	linear 0.XX ±0.3
				±3' 0.XXX ±0.3
		dr	N.SASAME	2016-03-30
		engr	N.SASAME	2016-03-30
		chr	H.SUZUKI	2016-03-30
		appd	Y.KAMEDA	2016-03-30
sheet index	revision sheet			scale 10:1
				Amphenol FCI
				dwg no 10131287
				sheet 4 of 4 size A2
				type PRODUCT CUSTOMER Drawing
				Rev. B