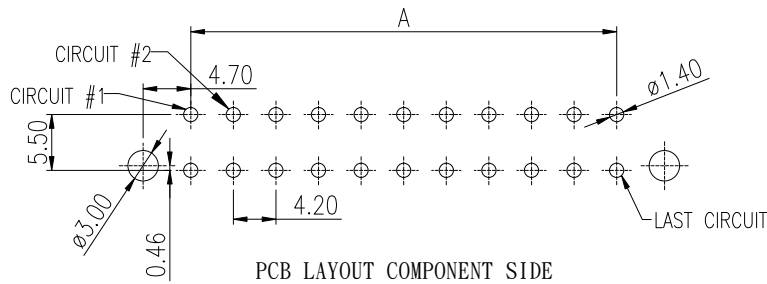
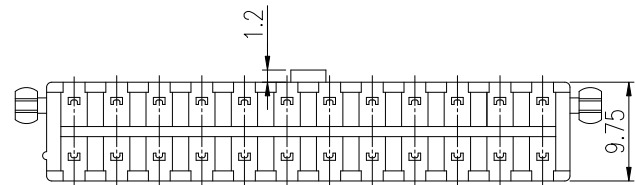
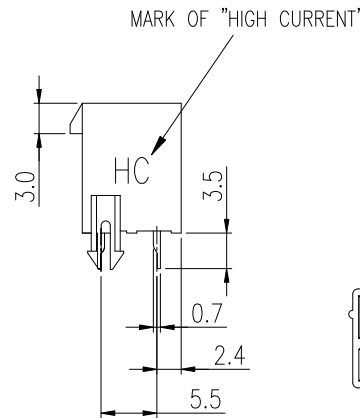
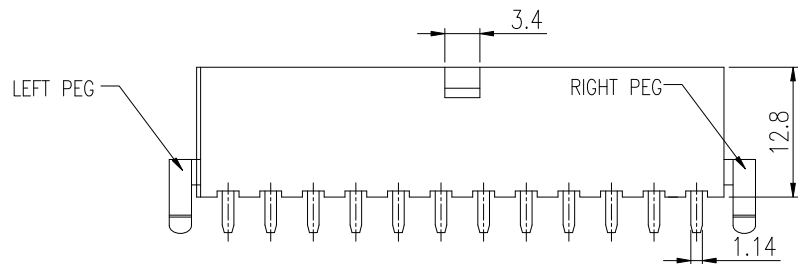
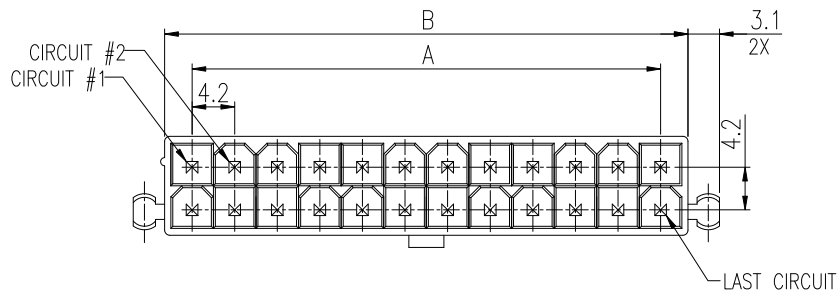


PRODUCT NUMBER
SEE PART NO. TABLE



NOTES:

- MATERIAL:
HSG: NYLON 66, UL94V-0. OPTIONAL COLORS.
TERMINAL: HIGH CONDUCTIVITY COPPER ALLOY.
PLATING: OPTIONAL ON CONTACT AREA.
- THIS HEADER MATES WITH FCI RECEPTACLE WIRE CONNECTOR 10127815, CRIMP WITH 10130517 FOR HIGH CURRENT APPLICATION.
- PRODUCT SPECIFICATION: GS-12-1333.
- PACKAGE SPECIFICATION: GS-14-2362.
- THE HOUSING WILL WITHSTAND EXPOSURE TO 235°C PEAK TEMPERATURE FOR 5 SECONDS IN A WAVE SOLDER APPLICATION WITH A 1.6mm MINIMUM THICK CIRCUIT BOARD.
- PART NUMBER SCHEME:
10131319- XX X X X X LF

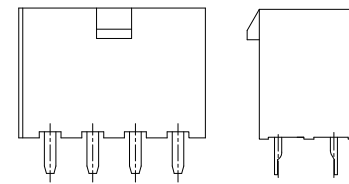
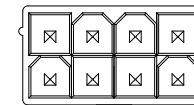
POS. CODE:		LOCATING PEG:
02: 2 POS.		0: NONE
04: 4 POS.		P: BOTH PEGS
24: 24 POS.		

PLATING CODE:		GLOW WIRE COMPATIBLE:
1: GOLD FLASH		0: NO
2: TIN		G: YES

HSG COLOR:		HSG MATERIAL:
1: NATURAL		1: NYLON 66
2: BLACK		

7. DIMENSIONAL & PART NO. TABLE:

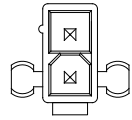
PART NUMBER	POS.	A	B
10131319-02XX1XXLF	02		5.4
10131319-04XX1XXLF	04	4.2	9.6
10131319-06XX1XXLF	06	8.4	13.8
10131319-08XX1XXLF	08	12.6	18.0
10131319-10XX1XXLF	10	16.8	22.2
10131319-12XX1XXLF	12	21.0	26.4
10131319-14XX1XXLF	14	25.2	30.6
10131319-16XX1XXLF	16	29.4	34.8
10131319-18XX1XXLF	18	33.6	39.0
10131319-20XX1XXLF	20	37.8	43.2
10131319-22XX1XXLF	22	42.0	47.4
10131319-24XX1XXLF	24	46.2	51.6



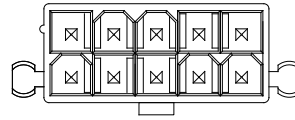
△ D PART WITHOUT PEGS

mat'l. code				surface <input checked="" type="checkbox"/> tolerance		projection		product family MINITEK PWR4.2 HCC	
ltr ecn no dr date				tolerances unless otherwise specified		mm		title	
A		TAI	2014-08-29	angles		X.X ±0.4		MINITEK PWR4.2 HIGH CURRENT CONNECTOR	
B	ELX-T-19532	TAI	2014-11-24	X'±1'		X.XX ±0.30		V/T DIP HEADER	
C	ELX-T-21754	TAI	2015-08-24	dr		KENNY TAI 2014-08-12		dwg no sheet 1 of 2 size	
D	ELX-T-25072	TAI	2016-10-03	enr		KENNY TAI 2014-08-12		10131319 A4	
				chr		KENNY TAI 2014-08-12		type Product Customer Drawing	
				appd		PM ZHENG 2014-08-29			
sheet index		revision sheet		D	D				
				1	2				

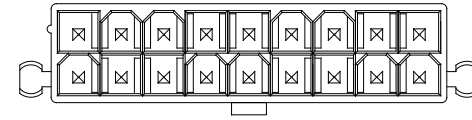
PRODUCT NUMBER
SEE PART NO. TABLE



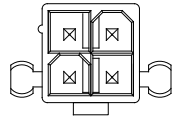
2 POS



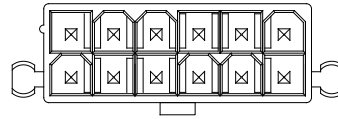
10 POS



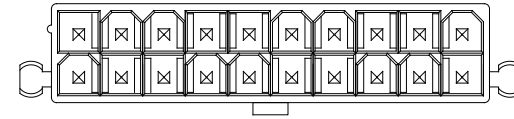
18 POS



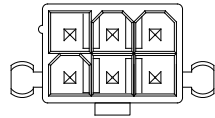
4 POS



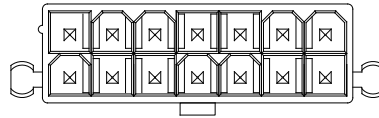
12 POS



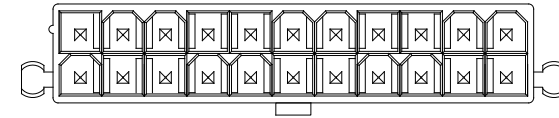
20 POS



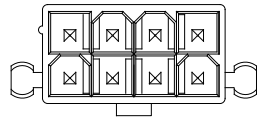
6 POS



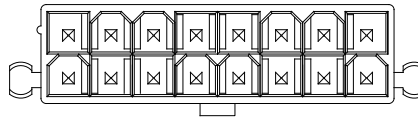
14 POS



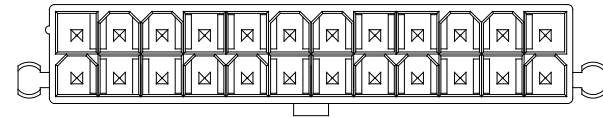
22 POS



8 POS



16 POS



24 POS

mat'l. code		surface <input checked="" type="checkbox"/> tolerance		projection		product family MINITEK PWR4.2 HCC	
ltr	ecn no	dr	date	tolerances unless otherwise specified		title	
				angles	X.X ±0.4	MINITEK PWR4.2 HIGH CURRENT CONNECTOR	
				X'±1'	X.XX ±0.30	V/T DIP HEADER	
				dr	KENNY TAI 2014-08-12	dwg no sheet 2 of 2 size	
				enr	KENNY TAI 2014-08-12	10131319 A4	
				chr	KENNY TAI 2014-08-12	type Product Customer Drawing	
				appd	PM ZHENG 2014-08-29		
sheet index	revision sheet	D	D				
		1	2				

