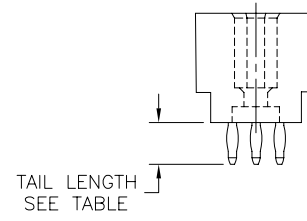
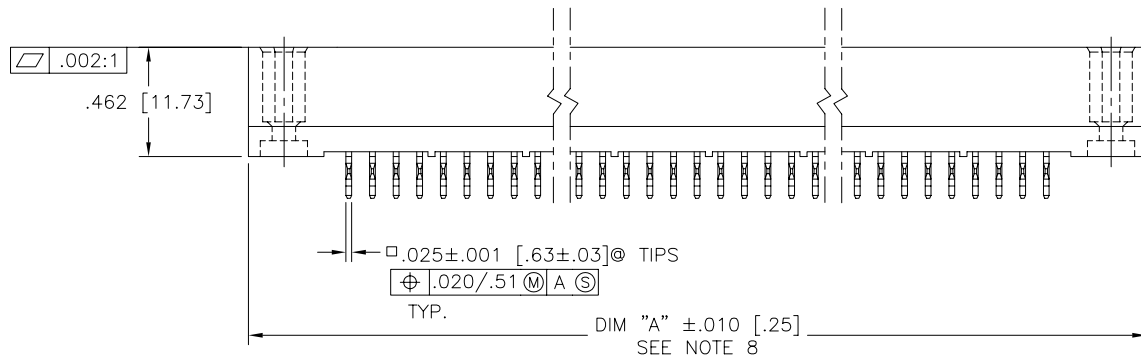
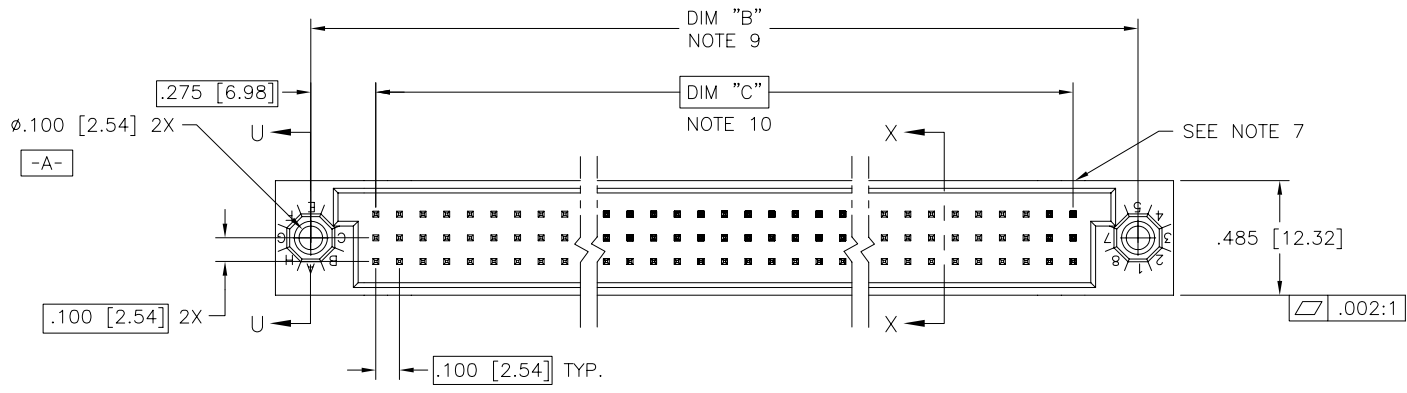


PRODUCT NUMBER
SEE TABLE



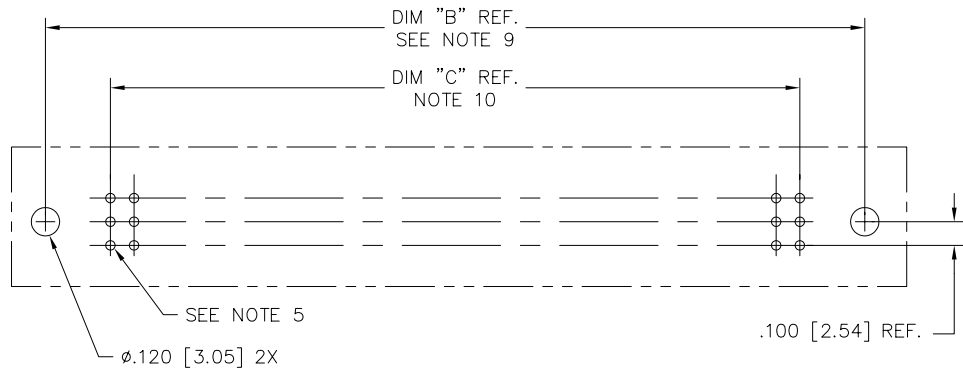
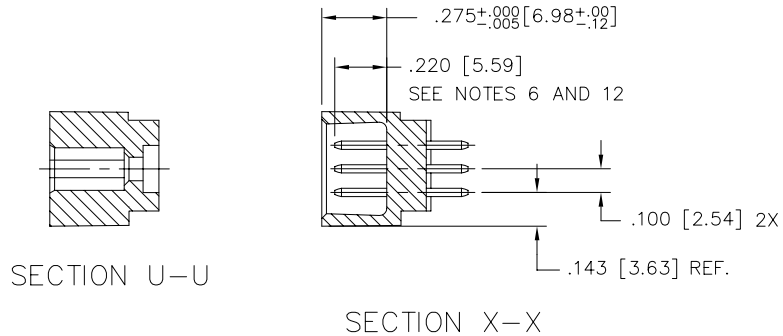
Copyright FCI

mat'l. code SEE NOTE 3		surface ISO 1302 ✓		tolerance ISO 406 ISO 1101		projection ⊕		product family HPC	
ltr		ecn no dr		date		tolerances unless otherwise specified		title	
G	V82252	HTB	12/28/98	angles	linear	.xx±.01/.3	INCH/MM	3 ROW VERTICAL HEADER W/PRESS-FIT PINS, 0 G.P.	
H	V00271	JWS	1/31/00	0°±2'		.xxx±.005/.13	scale 1:1	dwg no	
J	V05-0514	TAB	8/2/05			.xxx±.0020/.051		sheet 1 of 14 size	
K	v05-0999	DAI	10/28/05	dr	D.SHEAFER	3/14/91	FCI		50006
L	v05-1039	DAI	11/11/05	enr	S.CLARK	3/14/91	type		A3
M	M06-0283	MHT	7/27/06	chr	S.CLARK	3/14/91	Product		
N	M06-0490	MHT	12/13/06	appd	S.CLARK	3/14/91	Customer		Drawing
sheet	revision	N	N	N	N	N	N	N	N
index	sheet	1	2	3	4	5	6	7	8

PRODUCT NUMBER
SEE TABLE

NOTES:

- ① PRODUCT NUMBERING CODE:
50006 - X YYY Z LF
 - X LEAD FREE (OPTIONAL)
 - YYY TAIL LENGTH SEE TABLE
 - Z NO. OF POSITIONS SEE NOTE 2
 - LF PLATING SEE TABLE
 - BASE NUMBER
- ② THIS PRODUCT IS CONFIGURED IN SIZES OF 6 thru 80 COLUMNS IN INCREMENTS OF ONE.
i.e.: 6,7,8,9,.....79,80.
- ③ HOUSING MATERIAL: GLASS AND MINERAL FILLED HIGH TEMP. THERMOPLASTIC. FLAME RETARDANT PER UL94V-0. COLOR: BLACK.
PIN MATERIAL: PHOS BRONZE
- ④ CONTACT PLATING OPTIONS:
SEE PRODUCT NUMBER TABLE
- ⑤ ϕ .0453/1.151 DRILLED HOLE PLATED WITH .0003/.007 MIN. SnPb OVER .001/.03 to .003/.08 Cu. PLATING TO ACHIEVE A ϕ .040 \pm .003/1.02 \pm .08 HOLE.
- ⑥ TO ASSURE PROPER INSTALLATION: TOOLING, AS SPECIFIED IN INSTRUCTION MANUAL 155915-001 MUST BE USED. PIN MATING LENGTH WILL BE \pm .002/.05 AFTER INSTALLATION.
- ⑦ COMPANY NAME, PART NUMBER AND LOT CODE TO APPEAR ON THIS SURFACE PER BUS-12-108.
- ⑧ DIM "A" CALCULATION = $.100[2.54] \times \text{NO. OF COLUMNS} + .75[19.1]$
- ⑨ DIM "B" CALCULATION = $.100[2.54] \times \text{NO. OF COLUMNS} + .450[11.43]$
- ⑩ DIM "C" CALCULATION = $.100[2.54] \times \text{NO. OF COLUMNS} - .100[2.54]$
- 11. ALL POSITIONS ARE LOADED EXCEPT FOR -XXYYY ASSEMBLIES WHICH HAVE SELECTIVE LOADING.
- 12. REFERENCE 50807 FOR F.M.L.B. AVAILABLE OPTIONS AND WORKSHEET.
- 13. THIS PRODUCT (WITH 'LF' SUFFIX) MEETS EUROPEAN UNION DIRECTIVES AND OTHER COUNTRY REGULATIONS AS DESCRIBED IN GS-22-008.
- 14. THIS HOUSING WILL WITHSTAND EXPOSURE TO 260°C PEAK TEMPERATURE FOR 10-30 SECONDS IN A CONVECTION, INFRA-RED OR VAPOR PHASE REFLOW OVEN.



RECOMMENDED PCB LAYOUT
(ALL HOLES LOCATED ON .100/2.54 GRID UNLESS OTHERWISE SPECIFIED)

mat'l. code SEE NOTE 3		surface ISO 1302 ✓	tolerance ISO 406 ISO 1101	projection ⊕	product family HPC
ltr	ecn	no	dr	date	tolerances unless otherwise specified
N					angles linear .xx±.01/.3
					0°±2' .xxx±.005/.13
					.xxx±.0020/.051
			dr	D.SHEAFER	3/14/91
			enrg	S.CLARK	3/14/91
			chr	S.CLARK	3/14/91
			appd	S.CLARK	3/14/91
sheet index	revision sheet				



title
3 ROW VERTICAL HEADER
W/PRESS-FIT PINS, 0 G.P.

dwg no
50006

sheet 2 of 14 size
A3

type Product Customer Drawing



Copyright FCJ

PRODUCT NO.	NUMBER OF POSITIONS NOTE 2	TAIL LENGTH ±.015/0.38	CONTACT PLATING
50006-1YYYA	YYY	.177/4.50	30u"/.76u GOLD
50006-1YYC	YYY	.533/13.54	30u"/.76u GOLD
50006-1YYD	YYY	.733/18.62	30u"/.76u GOLD
50006-1YYG	YYY	.250/6.35	30u"/.76u GOLD
50006-1YYL	YYY	.188/4.78	30u"/.76u GOLD
50006-1YYP	YYY	.470/11.94	30u"/.76u GOLD
50006-3YYYA	YYY	.177/4.50	50u"/1.27u GOLD
50006-3YYC	YYY	.533/13.54	50u"/1.27u GOLD
50006-3YYD	YYY	.733/18.62	50u"/1.27u GOLD
50006-3YYG	YYY	.250/6.35	50u"/1.27u GOLD
50006-3YYL	YYY	.188/4.78	50u"/1.27u GOLD
50006-3YYP	YYY	.470/11.94	50u"/1.27u GOLD
50006-5YYYA	YYY	.177/4.50	30u"/.76u GXT
50006-5YYALF	YYY	.177/4.50	30u"/.76u GXT
50006-5YYC	YYY	.533/13.54	30u"/.76u GXT
50006-5YYCLF	YYY	.533/13.54	30u"/.76u GXT
50006-5YYD	YYY	.733/18.62	30u"/.76u GXT
50006-5YYDLF	YYY	.733/18.62	30u"/.76u GXT
50006-5YYG	YYY	.250/6.35	30u"/.76u GXT
50006-5YYGLF	YYY	.250/6.35	30u"/.76u GXT
50006-5YYL	YYY	.188/4.78	30u"/.76u GXT
50006-5YYLLF	YYY	.188/4.78	30u"/.76u GXT
50006-5YYP	YYY	.470/11.94	30u"/.76u GXT
50006-5YYPLF	YYY	.470/11.94	30u"/.76u GXT
50006-XX010	150	SEE SHEET 4	30u"/.76u GXT
50006-XX010LF	150	SEE SHEET 4	30u"/.76u GXT
50006-XX025	18	SEE SHEET 5	30u"/.76u GXT
50006-XX025LF	18	SEE SHEET 5	30u"/.76u GXT
50006-XX027	96	SEE SHEET 6	30u"/.76u GOLD
50006-XX027LF	96	SEE SHEET 6	30u"/.76u GXT
50006-XX028	30	SEE SHEET 7	30u"/.76u GOLD
50006-XX028LF	30	SEE SHEET 7	30u"/.76u GXT
50006-XX045	180	SEE SHEET 8	30u"/.76u GXT
50006-XX045LF	180	SEE SHEET 8	30u"/.76u GXT
50006-XX049	96	SEE SHEET 9	30u"/.76u GOLD
50006-XX049LF	96	SEE SHEET 9	30u"/.76u GXT
50006-XX053	150	SEE SHEET 10	30u"/.76u GXT
50006-XX053LF	150	SEE SHEET 10	30u"/.76u GXT
50006-XX054	150	SEE SHEET 11	30u"/.76u GOLD
50006-XX054LF	150	SEE SHEET 11	30u"/.76u GXT
50006-XX055	30	SEE SHEET 12	30u"/.76u GOLD
50006-XX055LF	30	SEE SHEET 12	30u"/.76u GXT
50006-XX056	150	SEE SHEET 13	30u"/.76u GOLD
50006-XX056LF	150	SEE SHEET 13	30u"/.76u GXT
50006-XX057	150	SEE SHEET 14	30u"/.76u GOLD
50006-XX057LF	150	SEE SHEET 14	30u"/.76u GXT



FCIconnect.com

Copyright FCI

mat'l. code SEE NOTE 3		surface ISO 1302 ✓	tolerance ISO 406 ISO 1101	projection 	product family HPC
ltr	ecn	no	dr	date	tolerances unless otherwise specified
N					angles linear .xx±.01/.3
					0'±2' .xxx±.005/.13
					.xxx±.0020/.051
			dr	D.SHEAFER	3/14/91
			enr	S.CLARK	3/14/91
			chr	S.CLARK	3/14/91
			appd	S.CLARK	3/14/91
sheet index	revision sheet				

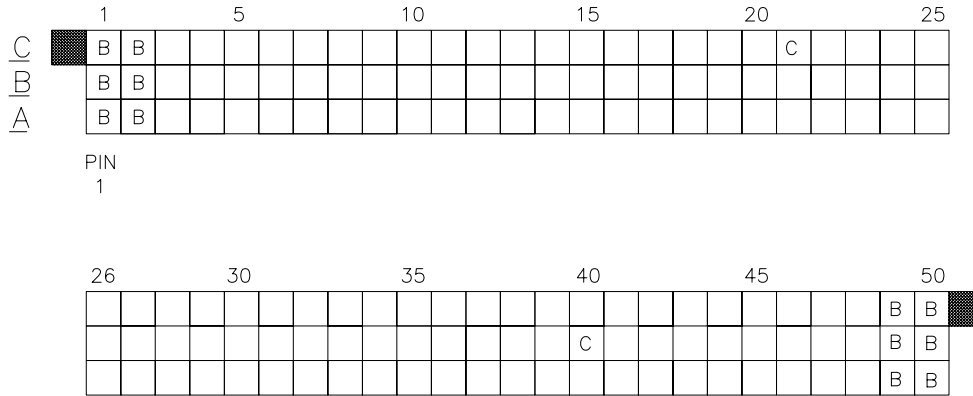


title	3 ROW VERTICAL HEADER W/PRESS-FIT PINS, 0 G.P.	
scale	1:1	
dwg no	50006	sheet 3 of 14 size A3
type	Product Customer Drawing	

form: A3

PRODUCT NUMBER
50006-XX010
50006-XX010LF

FOR PRODUCT NUMBERS 50006-XX010 AND 50006-XX010LF ONLY



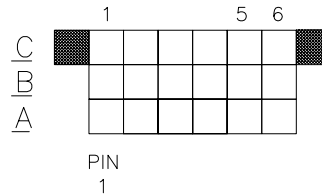
- NOTES FOR 50006-XX010 AND 50006-XX010LF ONLY:
- ALL POSITIONS ARE LOADED WITH "A" EXCEPT AS SHOWN.
 - COLUMN 1, ROW A IS DESIGNATED AS SIGNAL PIN 1, AS VIEWED FROM THE MATING FACE.
 - SIGNAL DATA FOR 50006-XX010 AND 50006-XX010LF:
 SIZE 3 x 50
 TOTAL NO. OF POSITIONS - 150
 NO. OF POSITIONS LOADED - 150

ITEM KEY	QTY.	MATING LENGTH	TAIL LENGTH
A	136	.200 / 5.08	.177 / 4.50
B	12	.200 / 5.08	.533 / 13.54
C	2	.240 / 6.10	.177 / 4.50

mat'l. code		surface ISO 1302 <input checked="" type="checkbox"/>		tolerance ISO 406 ISO 1101		projection 		product family HPC	
ltr	ecn no	dr	date	tolerances unless otherwise specified				title	
N				angles	linear	.XX±.01/.3 .XXX±.005/.13 .XXXX±.0020/.051		3 ROW VERTICAL HEADER W/PRESS-FIT PINS, 0 G.P.	
				0'±2'		scale 1:1		dwg no	
		dr	D.SHEAFER	3/14/91			sheet 4 of 14 size		
		enr	S.CLARK	3/14/91			50006		A3
		chr	S.CLARK	3/14/91			type		Product Customer Drawing
		appd	S.CLARK	3/14/91					
sheet index	revision sheet								

PRODUCT NUMBER
50006-XX025
50006-XX025LF

FOR PRODUCT NUMBERS 50006-XX025 AND 50006-XX025LF ONLY



CUSTOMER NOTE: END GUIDE PINS ARE SUGGESTED IN YOUR APPLICATION TO PREVENT STUBBING OF THE .260/6.60 MATING LENGTH SIGNAL PINS.

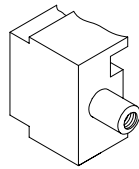
NOTES FOR 50006-XX025 AND 50006-XX025LF ONLY:

- ALL POSITIONS ARE LOADED WITH "A" .
- COLUMN 1, ROW A IS DESIGNATED AS SIGNAL PIN 1, AS VIEWED FROM THE MATING FACE.
- SIGNAL DATA FOR 50006-XX025 AND 50006-XX025LF:
SIZE 3 x 6
TOTAL NO. OF POSITIONS - 18
NO. OF POSITIONS LOADED - 18

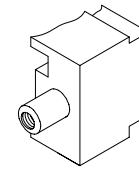
ITEM KEY	QTY.	MATING LENGTH	TAIL LENGTH
A	18	.260 / 6.60	.533 / 13.54

mat'l. code		surface ISO 1302 <input checked="" type="checkbox"/>		tolerance ISO 406 ISO 1101		projection 		product family HPC	
ltr	ecn	no	dr	date		tolerances unless otherwise specified		title	
N						.XX±.01/.3 .XXX±.005/.13 0'±2' .XXXX±.0020/.051		INCH/MM scale 1:1	
dr		D.SHEAFER		3/14/91				dwg no	
enr		S.CLARK		3/14/91				sheet 5 of 14 size	
chr		S.CLARK		3/14/91				50006 A3	
appd		S.CLARK		3/14/91		type		Product Customer Drawing	
sheet index	revision sheet								

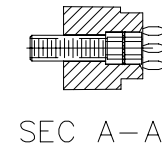
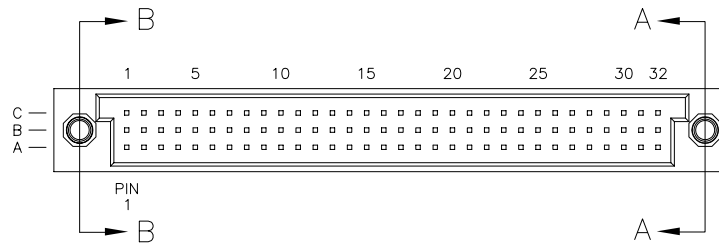
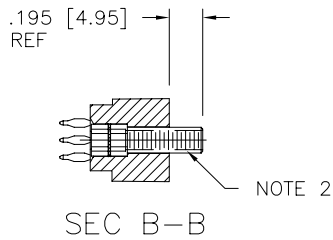
PRODUCT NUMBER
50006-XX027
50006-XX027LF



L.E.



R.E.



FOR PRODUCT NUMBERS 50006-XX027 AND 50006-XX027LF

NOTES:

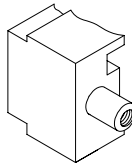
1. IDENTICAL TO P/N 50006-1096A EXCEPT AS SHOWN W/JACK SCREW INSERTS INSTALLED ON BOTH ENDS.
2. HARDWARE P/N 95729-001.

mat'l. code		surface ISO 1302 ✓		tolerance ISO 406 ISO 1101		projection ⊕		product family HPC		
ltr	ecn	no	dr	date		tolerances unless otherwise specified		title		
N						angles	linear	INCH/MM		
						0°±2'	.xx±.01/.3	3 ROW VERTICAL HEADER		
							.xxx±.005/.13	W/PRESS-FIT PINS, 0 G.P.		
							.xxxx±.0020/.051	scale 1:1		
			dr	D.SHEAFER		3/14/91		dwg no		
			enr	S.CLARK		3/14/91		sheet 6 of 14 size		
			chr	S.CLARK		3/14/91		50006 A3		
			appd	S.CLARK		3/14/91		type Product Customer Drawing		
sheet	revision									
index	sheet									



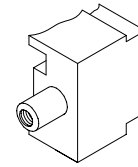
Copyright FCI

PRODUCT NUMBER
50006-XX028
50006-XX028LF



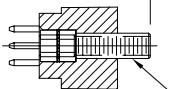
#4-40 UNC-2B THREAD

L.E.



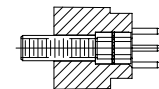
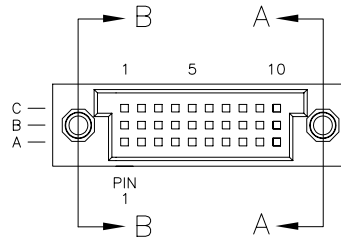
R.E.

0.195 [4.94]
REF



SEC B-B

NOTE 2



SEC A-A

FOR PRODUCT NUMBERS 50006-XX028 AND 50006-XX028LF

NOTES:

1. IDENTICAL TO P/N 50006-1030A EXCEPT AS SHOWN W/JACK SCREW INSERTS INSTALLED ON BOTH ENDS.
2. HARDWARE P/N 95729-001.



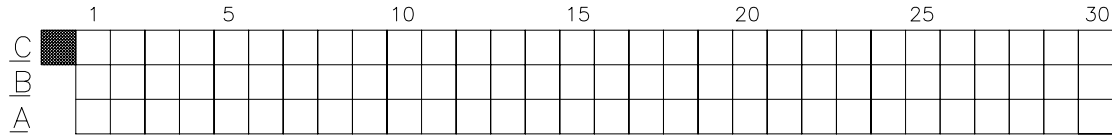
Copyright FCI

mat'l. code		surface ISO 1302 ✓		tolerance ISO 406 ISO 1101		projection ⊕		product family HPC	
ltr	ecn	no	dr	date		tolerances unless otherwise specified		title	
N						angles	linear	INCH/MM	
						0°±2'	.XX±.01/.3	3 ROW VERTICAL HEADER	
							.XXX±.005/.13	W/PRESS-FIT PINS, 0 G.P.	
							.XXX±.0020/.051	scale 1:1	
			dr	D.SHEAFER		3/14/91		dwg no	
			enr	S.CLARK		3/14/91		sheet 7 of 14 size	
			chr	S.CLARK		3/14/91		50006 A3	
			appd	S.CLARK		3/14/91		type Product Customer Drawing	
sheet index	revision sheet								

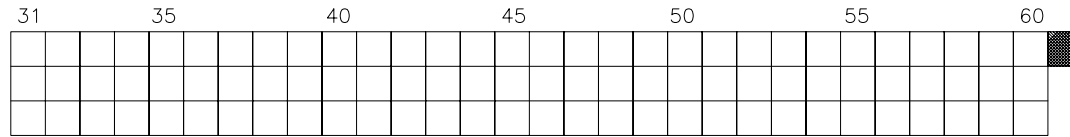


PRODUCT NUMBER
50006-XX045
50006-XX045LF

FOR PRODUCT NUMBERS 50006-XX045 AND 50006-XX045LF ONLY



PIN
1



NOTES FOR 50006-XX045 AND 50006-XX045LF ONLY:

- ALL POSITIONS ARE LOADED WITH "A".
- COLUMN 1, ROW A IS DESIGNATED AS SIGNAL PIN 1, AS VIEWED FROM THE MATING FACE.
- SIGNAL DATA FOR 50006-XX045 AND 50006-XX045LF:
SIZE 3 x 60
TOTAL NO. OF POSITIONS - 180
NO. OF POSITIONS LOADED - 180

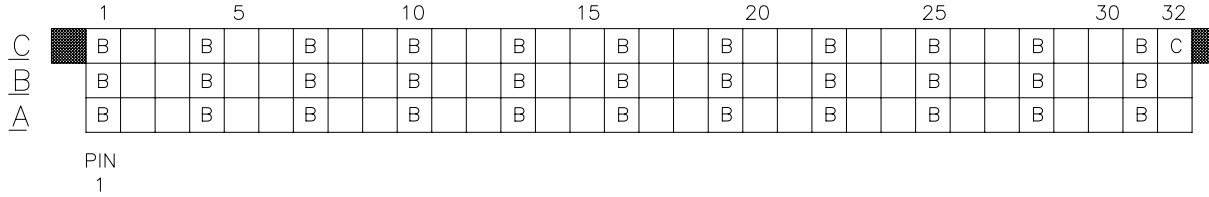
ITEM KEY	QTY.	MATING LENGTH	TAIL LENGTH
A	180	.220 - 5.59	.597 - 15.16

mat'l. code		surface ISO 1302 <input checked="" type="checkbox"/>		tolerance ISO 406 ISO 1101		projection 		product family HPC	
ltr	ecn	no	dr	date	tolerances unless otherwise specified			title	
N					angles	linear	.XX±.01/.3	INCH/MM	
					0°±2'		.XXX±.005/.13	3 ROW VERTICAL HEADER	
							.XXX±.0020/.051	W/PRESS-FIT PINS, 0 G.P.	
					dr	D.SHEAFER	3/14/91	scale 1:1	
					enr	S.CLARK	3/14/91	FCJ	
					chr	S.CLARK	3/14/91	dwg no	
					appd	S.CLARK	3/14/91	sheet 8 of 14 size	
sheet index		revision sheet						50006 A3	
								type Product Customer Drawing	

form: A3

PRODUCT NUMBER
50006-XX049
50006-XX049LF

FOR PRODUCT NUMBER 50006-XX049 AND 50006-XX049LF ONLY



CUSTOMER NOTE: END GUIDE PINS ARE SUGGESTED IN YOUR APPLICATION TO PREVENT STUBBING OF THE .260/6.60 MATING LENGTH SIGNAL PINS.

NOTES FOR 50006-XX049 AND 50006-XX049LF ONLY:

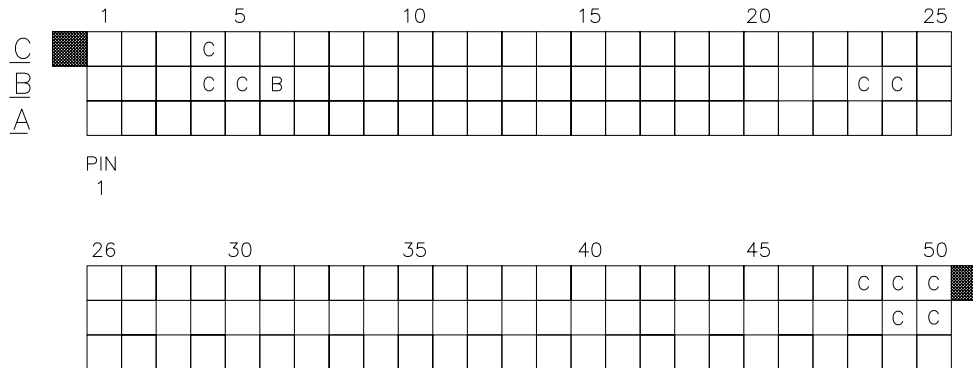
- ALL POSITIONS ARE LOADED WITH "A" EXCEPT AS SHOWN.
- COLUMN 1, ROW A IS DESIGNATED AS SIGNAL PIN 1, AS VIEWED FROM THE MATING FACE.
- SIGNAL DATA FOR 50006-XX049 AND 50006-XX049LF:
 SIZE 3 x 32
 TOTAL NO. OF POSITIONS - 96
 NO. OF POSITIONS LOADED - 96

ITEM KEY	QTY.	MATING LENGTH	TAIL LENGTH
A	62	.220 / 5.59	.177 / 4.50
B	33	.260 / 6.60	.177 / 4.50
C	1	.180 / 4.57	.177 / 4.50

mat'l. code		surface ISO 1302 ✓		tolerance ISO 406 ISO 1101		projection ⊕		product family HPC	
ltr	ecn	no	dr	date		tolerances unless otherwise specified		title	
N						angles	linear	INCH/MM	
						0'±2'	.XX±.01/.3	3 ROW VERTICAL HEADER	
							.XXX±.005/.13	W/PRESS-FIT PINS, 0 G.P.	
							.XXXX±.0020/.051	scale 1:1	
			dr	D.SHEAFER 3/14/91		FCJ		dwg no	
			enr	S.CLARK 3/14/91				sheet 9 of 14 size	
			chr	S.CLARK 3/14/91				50006 A3	
			appd	S.CLARK 3/14/91				type Product Customer Drawing	
sheet index	revision sheet								

PRODUCT NUMBER
50006-XX053
50006-XX053LF

FOR PRODUCT NUMBERS 50006-XX053 AND 50006-XX053LF ONLY



CUSTOMER NOTE: END GUIDE PINS ARE SUGGESTED IN YOUR APPLICATION TO PREVENT STUBBING OF THE .260 MATING LENGTH SIGNAL PINS.

- ALL POSITIONS ARE LOADED WITH "A" EXCEPT AS SHOWN.
- COLUMN 1, ROW A IS DESIGNATED AS SIGNAL PIN 1, AS VIEWED FROM THE MATING FACE.
- SIGNAL DATA FOR 50006-XX053 AND 50006-XX053LF:
 SIZE 3 x 50
 TOTAL NO. OF POSITIONS - 150
 NO. OF POSITIONS LOADED - 150

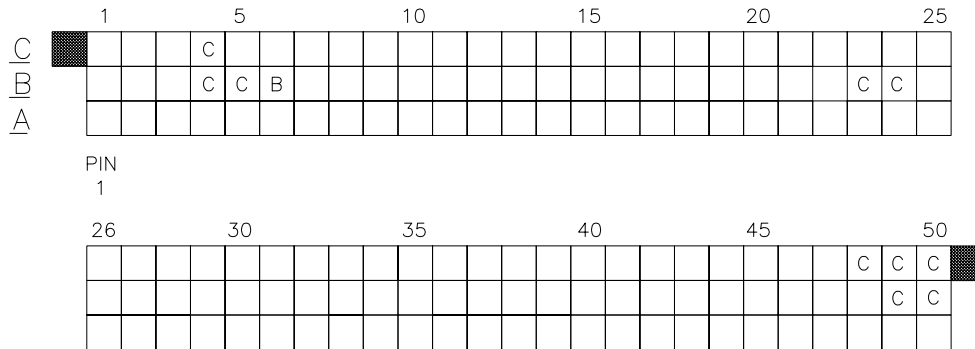
ITEM KEY	QTY.	MATING LENGTH	TAIL LENGTH
A	139	.220 / 5.59	.250 / 6.35
B	1	.180 / 4.57	.250 / 6.35
C	10	.260 / 6.60	.250 / 6.35

mat'l. code		surface ISO 1302 ✓		tolerance ISO 406 ISO 1101		projection ⊕		product family HPC	
ltr	ecn	no	dr	date	tolerances unless otherwise specified		title		
N					angles	linear	INCH/MM		3 ROW VERTICAL HEADER
					0°±2'	.XX±.01/.3	scale 1:1		W/PRESS-FIT PINS, 0 G.P.
						.XXX±.005/.13			dwg no
					dr	D.SHEAFER	3/14/91	sheet 0 of 14 size	
					enr	S.CLARK	3/14/91	50006 A3	
					chr	S.CLARK	3/14/91	type	
					appd	S.CLARK	3/14/91	Product Customer Drawing	
sheet index	revision sheet								

Copyright FCJ
 FCJconnect.com

PRODUCT NUMBER
50006-XX054
50006-XX054LF

FOR PRODUCT NUMBERS 50006-XX054 AND 50006-XX054LF ONLY



CUSTOMER NOTE: END GUIDE PINS ARE SUGGESTED IN YOUR APPLICATION TO PREVENT STUBBING OF THE .260 MATING LENGTH SIGNAL PINS.

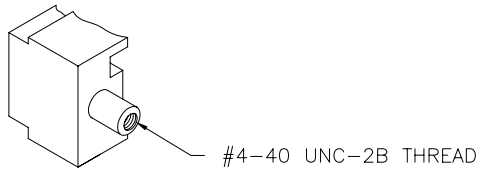
NOTES FOR 50006-XX054 AND 50006-XX054LF ONLY:

1. ALL POSITIONS ARE LOADED WITH "A" EXCEPT AS SHOWN.
2. COLUMN 1, ROW A IS DESIGNATED AS SIGNAL PIN 1, AS VIEWED FROM THE MATING FACE.
3. SIGNAL DATA FOR 50006-XX054 AND 50006-XX054LF:
 SIZE 3 x 50
 TOTAL NO. OF POSITIONS - 150
 NO. OF POSITIONS LOADED - 150

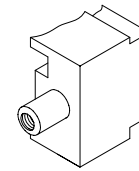
ITEM KEY	QTY.	MATING LENGTH	TAIL LENGTH
A	139	.220 / 5.59	.561 / 14.25
B	1	.180 / 4.57	.521 / 13.23
C	10	.260 / 6.60	.601 / 15.27

mat'l. code		surface ISO 1302 ✓		tolerance ISO 406 ISO 1101		projection ⊕		product family HPC	
ltr		ecn no		date		tolerances unless otherwise specified		title	
N						angles linear .xx±.01/.3 0'±2' .xxx±.005/.13 .xxxx±.0020/.051		INCH/MM scale 1:1 3 ROW VERTICAL HEADER W/PRESS-FIT PINS, 0 G.P.	
		dr		D.SHEAFER		3/14/91		dwg no	
		enr		S.CLARK		3/14/91		sheet 11 of 14 size	
		chr		S.CLARK		3/14/91		50006 A3	
		appd		S.CLARK		3/14/91		type Product Customer Drawing	
sheet index		revision sheet							

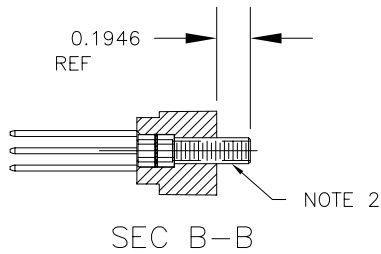
PRODUCT NUMBER
50006-XX055
50006-XX055LF



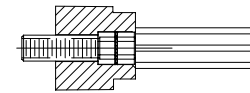
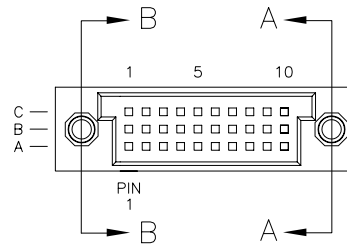
L.E.



R.E.



SEC B-B



SEC A-A

FOR PRODUCT NUMBERS 50006-XX055 AND 50006-XX055LF

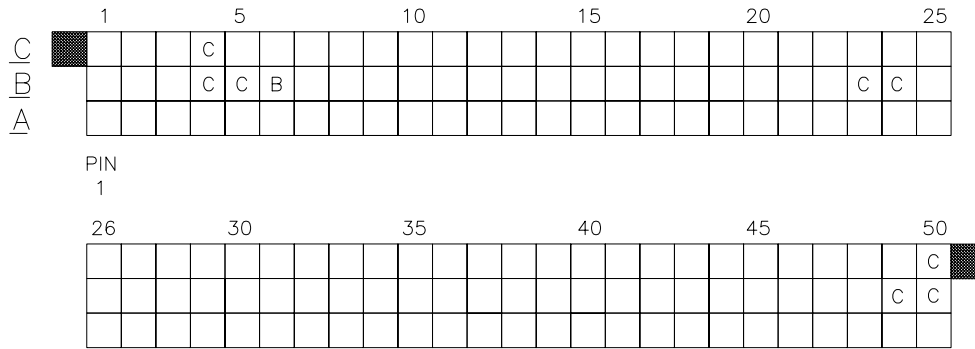
NOTES:

- IDENTICAL TO P/N 50006-1030D EXCEPT AS SHOWN W/JACK SCREW INSERTS INSTALLED ON BOTH ENDS.
- HARDWARE P/N 95729-001.

mat'l. code		surface ISO 1302 ✓		tolerance ISO 406 ISO 1101		projection ⊕		product family HPC	
ltr	ecn	no	dr	date		tolerances unless otherwise specified		title	
N						.XX±.01/.3 linear .XXX±.005/.13 .XXXX±.0020/.051		INCH/MM	
				0°±2'		scale 1:1		3 ROW VERTICAL HEADER W/PRESS-FIT PINS, 0 G.P.	
			dr	D.SHEAFER		3/14/91		dwg no	
			enr	S.CLARK		3/14/91		sheet 2 of 14 size	
			chr	S.CLARK		3/14/91		50006 A3	
			appd	S.CLARK		3/14/91		type Product Customer Drawing	
sheet index	revision sheet								

PRODUCT NUMBER
50006-XX056
50006-XX056LF

FOR PRODUCT NUMBER 50006-XX056 AND 50006-XX056LF ONLY



CUSTOMER NOTE: END GUIDE PINS ARE SUGGESTED IN YOUR APPLICATION TO PREVENT STUBBING OF THE .260 MATING LENGTH SIGNAL PINS.

NOTES FOR 50006-XX056 AND 50006-XX056LF ONLY:

- ALL POSITIONS ARE LOADED WITH "A" EXCEPT AS SHOWN.
- COLUMN 1, ROW A IS DESIGNATED AS SIGNAL PIN 1, AS VIEWED FROM THE MATING FACE.
- SIGNAL DATA FOR 50006-XX056 AND 50006-XX056LF:
 SIZE 3 x 50
 TOTAL NO. OF POSITIONS - 150
 NO. OF POSITIONS LOADED - 150

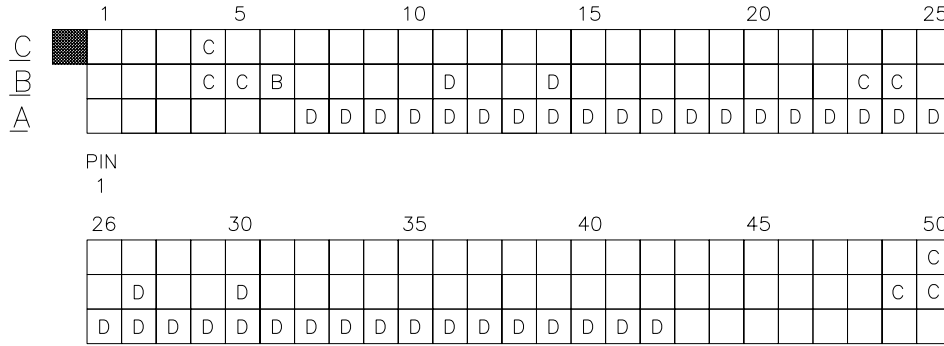
ITEM KEY	QTY.	MATING LENGTH	TAIL LENGTH
A	141	.220 / 5.59	.177 / 4.50
B	1	.180 / 4.57	.177 / 4.50
C	8	.260 / 6.60	.177 / 4.50

mat'l. code		surface ISO 1302	tolerance ISO 406 ISO 1101	projection 	product family HPC
ltr	ecn	no	dr	date	tolerances unless otherwise specified
N					angles linear .xx±.01/.3 .xxx±.005/.13 .xxxx±.0020/.051
				0'±2'	INCH/MM
				scale 1:1	title 3 ROW VERTICAL HEADER W/PRESS-FIT PINS, 0 G.P.
		dr	D.SHEAFER	3/14/91	dwg no
		enr	S.CLARK	3/14/91	sheet 3 of 14 size
		chr	S.CLARK	3/14/91	50006 A3
		appd	S.CLARK	3/14/91	type Product Customer Drawing
sheet index	revision sheet				

FCJ
FCIconnect.com
Copyright FCI

PRODUCT NUMBER
50006-XX057
50006-XX057LF

FOR PRODUCT NUMBER 50006-XX057 AND 50006-XX057LF



CUSTOMER NOTE: END GUIDE PINS ARE SUGGESTED IN YOUR APPLICATION TO PREVENT STUBBING OF THE .260 MATING LENGTH SIGNAL PINS.

NOTES FOR 50006-XX057 AND 50006-XX057LF ONLY:

- ALL POSITIONS ARE LOADED WITH "A" EXCEPT AS SHOWN.
- COLUMN 1, ROW A IS DESIGNATED AS SIGNAL PIN 1, AS VIEWED FROM THE MATING FACE.
- SIGNAL DATA FOR 50006-XX057 AND 50006-XX057LF:
 SIZE 3 x 50
 TOTAL NO. OF POSITIONS - 150
 NO. OF POSITIONS LOADED - 150

ITEM KEY	QTY.	MATING LENGTH	TAIL LENGTH
A	101	.220 / 5.59	.561 / 14.25
B	1	.180 / 4.57	.521 / 13.23
C	8	.260 / 6.60	.601 / 15.27
D	40	.220 / 5.59	.177 / 4.50

mat'l. code		surface ISO 1302 <input checked="" type="checkbox"/>		tolerance ISO 406 ISO 1101		projection 		product family HPC	
ltr	ecn no	dr	date	tolerances unless otherwise specified				title	
N				angles	linear	INCH/MM		3 ROW VERTICAL HEADER W/PRESS-FIT PINS, 0 G.P.	
				0°±2'		scale 1:1		dwg no 50006 sheet 4 of 14 size A3	
		dr	D.SHEAFER	3/14/91				type Product Customer Drawing	
		enr	S.CLARK	3/14/91					
		chr	S.CLARK	3/14/91					
		appd	S.CLARK	3/14/91					
sheet index	revision sheet								

Copyright FCJ
FCJconnect.com