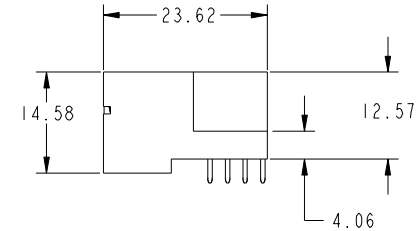
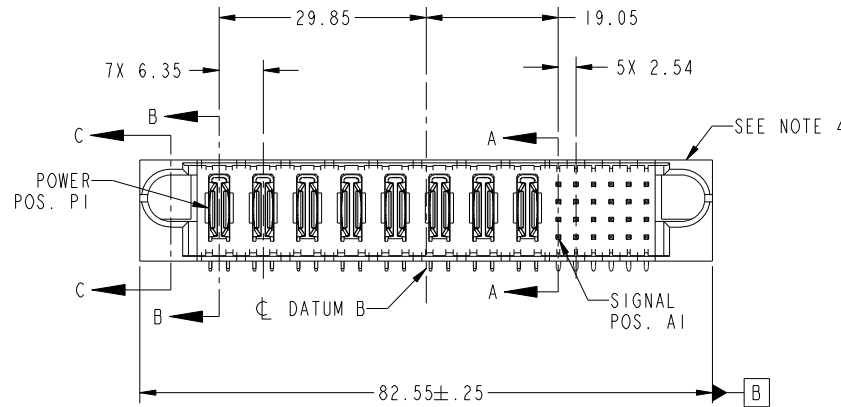


Tous droits strictement réservés. Reproduction ou communication a des tiers interdite sous quelque forme que ce soit sans autorisation écrite du propriétaire. Propriété de c FCI. Droits de reproduction FCI.



All rights strictly reserved. Reproduction or issue to third parties in any form whatever is not permitted without written authority from the proprietor. Property of FCI. Copyright FCI.

PRODUCT NO. 51732-021-- NOTE: 3	ROWS D C B A	POWER								SIGNAL						E2		
		E1	P1	P2	P3	P4	P5	P6	P7	P8	1	2	3	4	5		6	



CODE	DIM "M" MATING LENGTH	CONTACT TYPE
E	[5.59]	SIGNAL
F	[5.59]	SIGNAL
G	[5.59]	SIGNAL
H	[5.59]	SIGNAL
R	[6.86]	SIGNAL
S	[6.86]	SIGNAL
T	[6.86]	SIGNAL
U	[6.86]	SIGNAL
PA	[N/A]	POWER

mat'l code		SEE NOTE		tolerances unless otherwise specified		CUSTOMER		 www.fciconnect.com	
ltr	ecn no.	dr	date	linear	0.X ± 0.5	COPY		title	
A	V04-0667	TAB	06/28/04		0.XX ± 0.25	projection		8P + 24S	
B	V04-1004	TAB	10/05/04		0.XXX ± 0.10			RIGHT ANGLE SOLDER HEADER	
C	DG05-0013	LH	01/21/05	angles	0° + 2°			product family PwrBlade code	
D	DG05-0554	GuoJM	12/19/05	dr	T. BRUNGARD 06/28/04	scale		213	
E	DG08-0214	JC	08/27/08	engr	M. GRAY 06/28/04	1:1		size dwg no	
F	DG07-0498	JW	09/10/08	chr	M. GRAY 06/28/04	A		51732-021	
				appd	M. GRAY 06/28/04			sheet 1 of 4	
sheet index	revision sheet	F 1	F 2	F 3	F 4				

cage code 22526

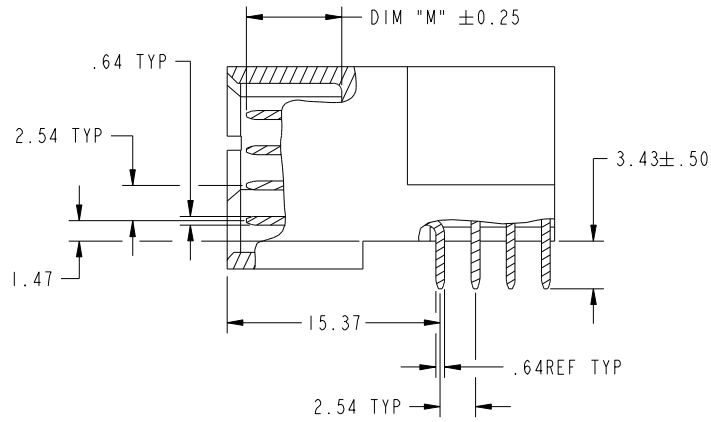
Pro/E

Tous droits strictement reserves. Reproduction ou communication a des tiers interdite sous quelque forme que ce soit sans autorisation écrite du propriétaire. Propriete de c FCI. Droits de reproduction FCI.

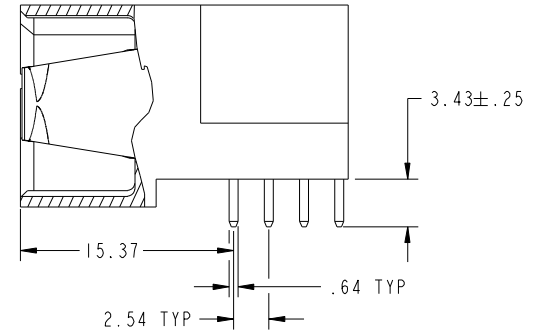


All rights strictly reserved. Reproduction or issue to third parties in any form whatever is not permitted without written authority from the proprietor. Property of FCI. Copyright FCI.

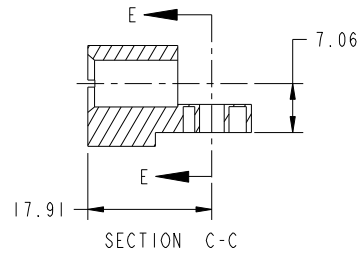
PRODUCT NUMBER
51732-021--
NOTE: 3



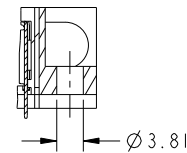
BROKEN-OUT SECTION A-A
SCALE 2:1



BROKEN-OUT SECTION B-B
SCALE 2:1



SECTION C-C



PARTIAL SECTION E-E

mat'l code		SEE NOTE		tolerances unless otherwise specified		CUSTOMER		FCI www.fciconnect.com	
ltr	ecn no.	dr	date	linear	0.X ±0.5	COPY		title	
F					0.XX ±0.25	projection		8P + 24S RIGHT ANGLE SOLDER HEADER	
				angles	0.XXX ±0.10	MIM		product family PwrBlade code	
				dr	0° +2°	scale		size	
				enr	T. BRUNGARD 06/28/04	1:1		dwg no	
				chr	M. GRAY 06/28/04			51732-021	
				appd	M. GRAY 06/28/04			sheet	
sheet index		revision sheet						2	

cage code 22526

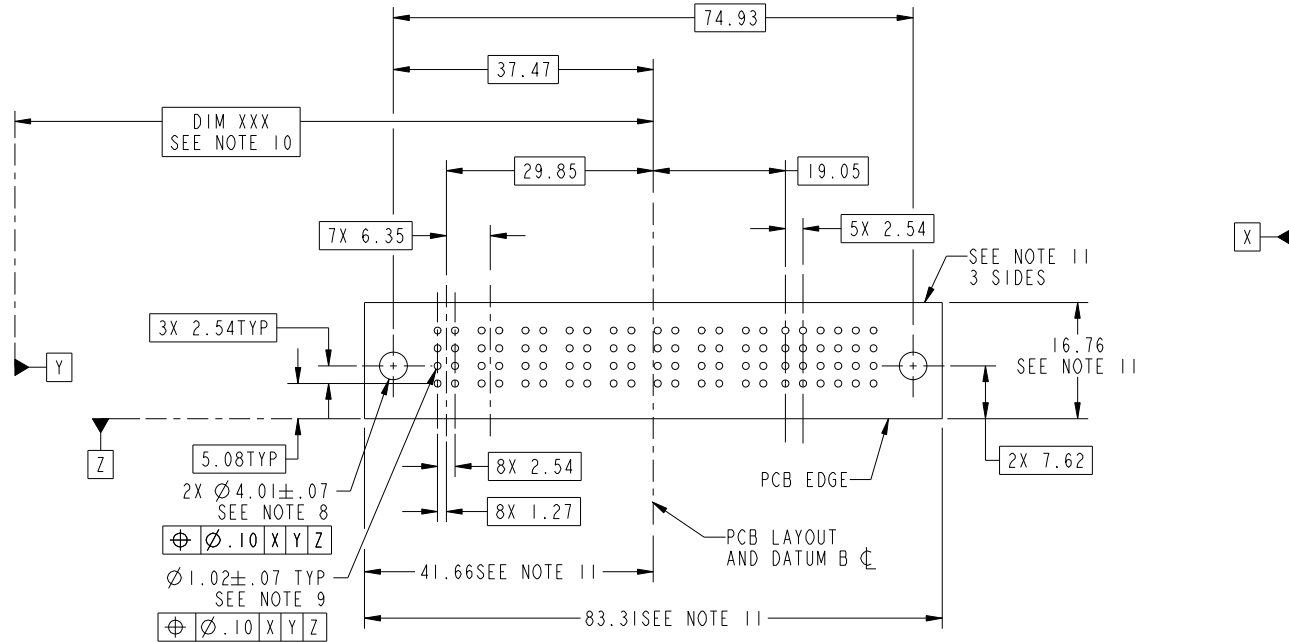
Pro/E

Tous droits strictement reserves. Reproduction ou communication a des tiers interdite sous quelque forme que ce soit sans autorisation écrite du propriétaire. Propriete de c FCI. Droits de reproduction FCI.



All rights strictly reserved. Reproduction or issue to third parties in any form whatever is not permitted without written authority from the proprietor. Property of FCI. Copyright FCI.

PRODUCT NUMBER
51732-021--
NOTE: 3



RECOMMENDED PCB LAYOUT

mat'l code		SEE NOTE		tolerances unless otherwise specified		CUSTOMER		FCI		www.fciconnect.com	
ltr	ecn no.	dr	date	linear	0.X ± 0.5	COPY		title			
F					0.XX ± 0.25	projection		8P + 24S			
				angles	0.XXX ± 0.10			RIGHT ANGLE SOLDER HEADER			
				dr	0° + 2°			product family		PwrBlade	code
				engr	T. BRUNGARD 06/28/04	scale		size		dwg no	213
				chr	M. GRAY 06/28/04	1:1		A		51732-021	sheet
				appd	M. GRAY 06/28/04						3
sheet index	revision sheet										

cage code 22526

Pro/E

Tous droits strictement reserves. Reproduction ou communication a des tiers interdite sous quelque forme que ce soit sans autorisation écrite du propriétaire. Propriete de c FCI. Droits de reproduction FCI.



All rights strictly reserved. Reproduction or issue to third parties in any form whatever is not permitted without written authority from the proprietor. Property of FCI. Copyright FCI.

PRODUCT NUMBER
51732-021--
NOTE: 3

NOTES:

1. DIMENSIONS AND TOLERANCES ARE IN ACCORDANCE WITH ASME Y14.5M, 1994 UNLESS OTHERWISE SPECIFIED.

CONNECTOR NOTES:

- 2. HOUSING MATERIAL: UL 94 V-0 GLASS FILLED HIGH-TEMP THERMOPLASTIC
POWER CONTACT MATERIAL: COPPER ALLOY
SIGNAL PIN MATERIAL: COPPER ALLOY
- 3. PLATING:
SEE ITEM 1 & 2 IN PRINT 10064183 FOR PLATING SPEC OF 51732-021; 51732-021LF PRESPECTIVELY.
- 4. MANUFACTURER'S NAME, P/N, AND DATE CODE TO APPEAR ON THIS SURFACE.
- 5. PRODUCT SPECIFICATION GS-12-149.
APPLICATION SPECIFICATION BUS-20-067.
- 6. PACKAGED IN TRAYS.

PCB NOTES:

- 7. ALL HOLE DIAMETERS ARE FINISHED HOLE SIZE.
- 8. MOUNTING HOLES, WHERE APPLICABLE, ARE UNPLATED.
- 9. $\varnothing 1.151 \pm 0.025$ DRILLED HOLES PLATED WITH
0.008 MIN SnPb OR Sn OVER 0.03
TO 0.08 Cu PLATING TO ACHIEVE
 $\varnothing 1.02 \pm .07$ HOLE.
- 10. "DIM XXX" TO BE DETERMINED BY THE CUSTOMER.
- 11. CONNECTOR KEEP-OUT ZONE.
- 12. A Δ SYMBOL WILL BE NEXT TO ANY DIMENSION, VIEW, OR NOTE WHICH HAS BEEN MODIFIED WITH THE CURRENT DRAWING REVISION.

mat'l code		SEE NOTE		tolerances unless otherwise specified		CUSTOMER		www.fciconnect.com	
ltr	ecn no.	dr	date	linear	0.X ± 0.5		COPY		title 8P + 24S RIGHT ANGLE SOLDER HEADER
F					0.XX ± 0.25		projection		
					0.XXX ± 0.10				
				angles	0° + 2°				product family
				dr	T. BRUNGARD	06/28/04	scale		PwrBlade
				enrg	M. GRAY	06/28/04	1:1		code
				chr	M. GRAY	06/28/04	A		213
				appd	M. GRAY	06/28/04			sheet
sheet index		revision sheet						4	

cage code 22526

Pro/E