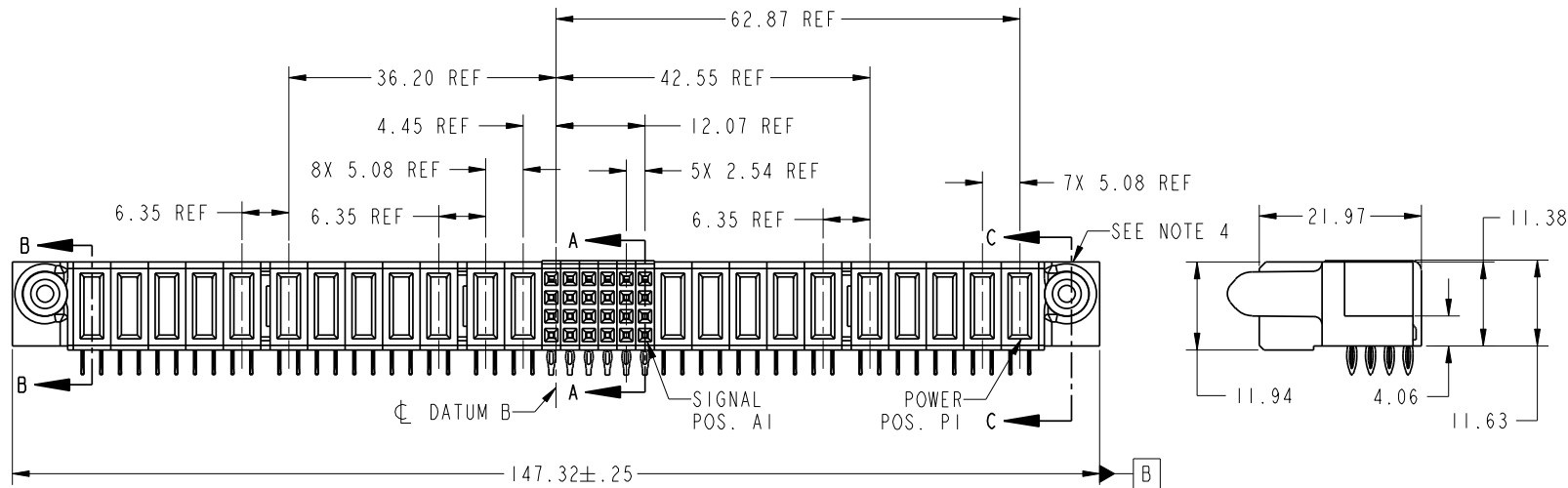
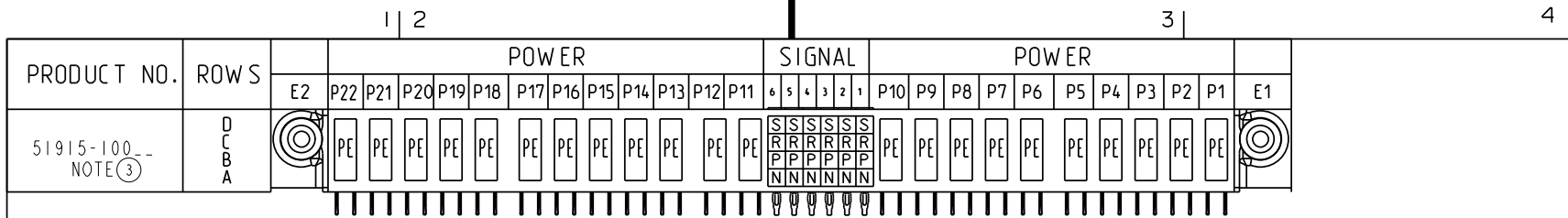


Tous droits strictement réservés. Reproduction ou communication o des liers interdite sous quelque forme que ce soit sans autorisation écrite du propriétaire. Propriete de c FCI. Drois de reproduction FCI.



All rights strictly reserved. Reproduction or issue to third parties in any form whatever is not permitted without written authority from the proprietor. Property of FCI. Copyright FCI.



CODE	DIM "M" MATING LENGTH	CONTACT TYPE
PE	[1.07]	POWER
S	[N/A]	SIGNAL
R	[N/A]	SIGNAL
P	[N/A]	SIGNAL
N	[N/A]	SIGNAL

mat'l code				tolerances unless otherwise specified	
lir	ecn no.	dr	date	linear	angles
A	DG06-0176	JMG	04/28/06	0.X ±0.3	0° ±2°
				0.XX ±0.10	
				0.XXX ±0.050	
				JM GUO 04/28/06	
				enrg SLUO 04/28/06	
				chr BEER FU 04/28/06	
				appd JOSEPH HSIA 04/28/06	

CUSTOMER		www.fciconnect.com	
COPY		title	
projection		10P+24S+12P	
MM		RIGHT ANGLE PF RECEPTACLE	
scale		product family	
1:1		PwrBlade	
		code	
		213	
		sheet	
		1 of 4	

sheet index	revision sheet	A	A	A	A
		1	2	3	4

1 | 2

Pro/E

PDM: Rev: A

STAT: Released

Printed: Dec 20, 2010

A

B

A

B

1 | 2

3 |

4

code code 22506

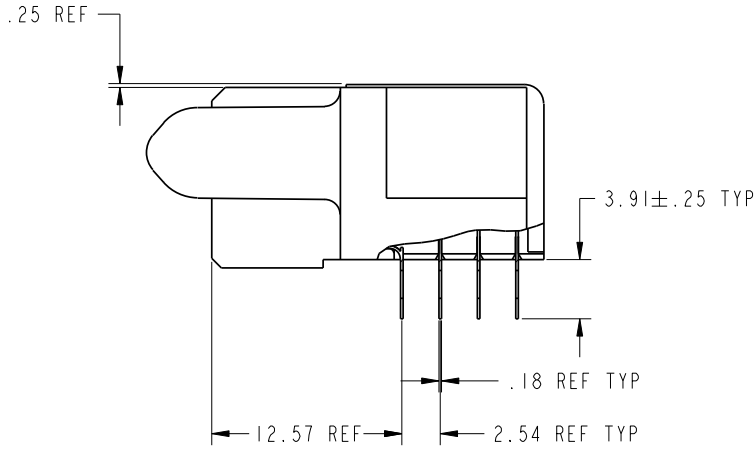
4

Tous droits strictement réservés. Reproduction ou communication o des liers interdite sous quelque forme que ce soit sans autorisation écrite du propriétaire. Propriete de c FCI. Droits de reproduction FCI.

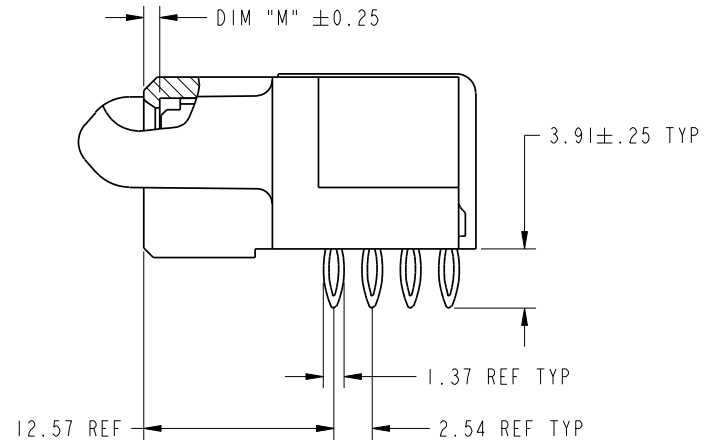


All rights strictly reserved. Reproduction or issue to third parties in any form whatever is not permitted without written authority from the proprietor. Property of FCI. Copyright FCI.

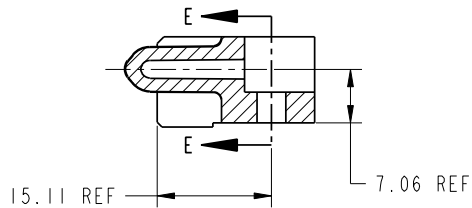
PRODUCT NUMBER
51915-100__
NOTE ③



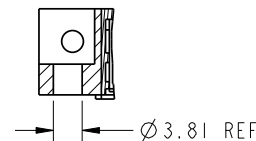
BROKEN-OUT SECTION A-A
SCALE 2:1



BROKEN-OUT SECTION B-B
SCALE 2:1



SECTION C-C



PARTIAL SECTION E-E

mat'l code		SEE NOTE 2		tolerances unless otherwise specified		CUSTOMER		FCI www.fciconnect.com	
lir	ecn no.	dr	date	linear	0.X ± 0.3	COPY		title	
A					0.XX ± 0.10	projection		10P+24S+12P	
				angles	0.XXX ± 0.050	⊕ ↗		RIGHT ANGLE PF RECEPTACLE	
				dr	JM GUO 04/28/06	MM		product family	
				enrg	SLUO 04/28/06	← →		PwrBlade	
				chr	BEER FU 04/28/06	scale		size	
				appd	JOSEPH HSIA 04/28/06	1:1		dwg no	
sheet index		revision sheet						A 51915-100	
								code 213	
								sheet 2 of 4	

Pro/E

PDM: Rev: A

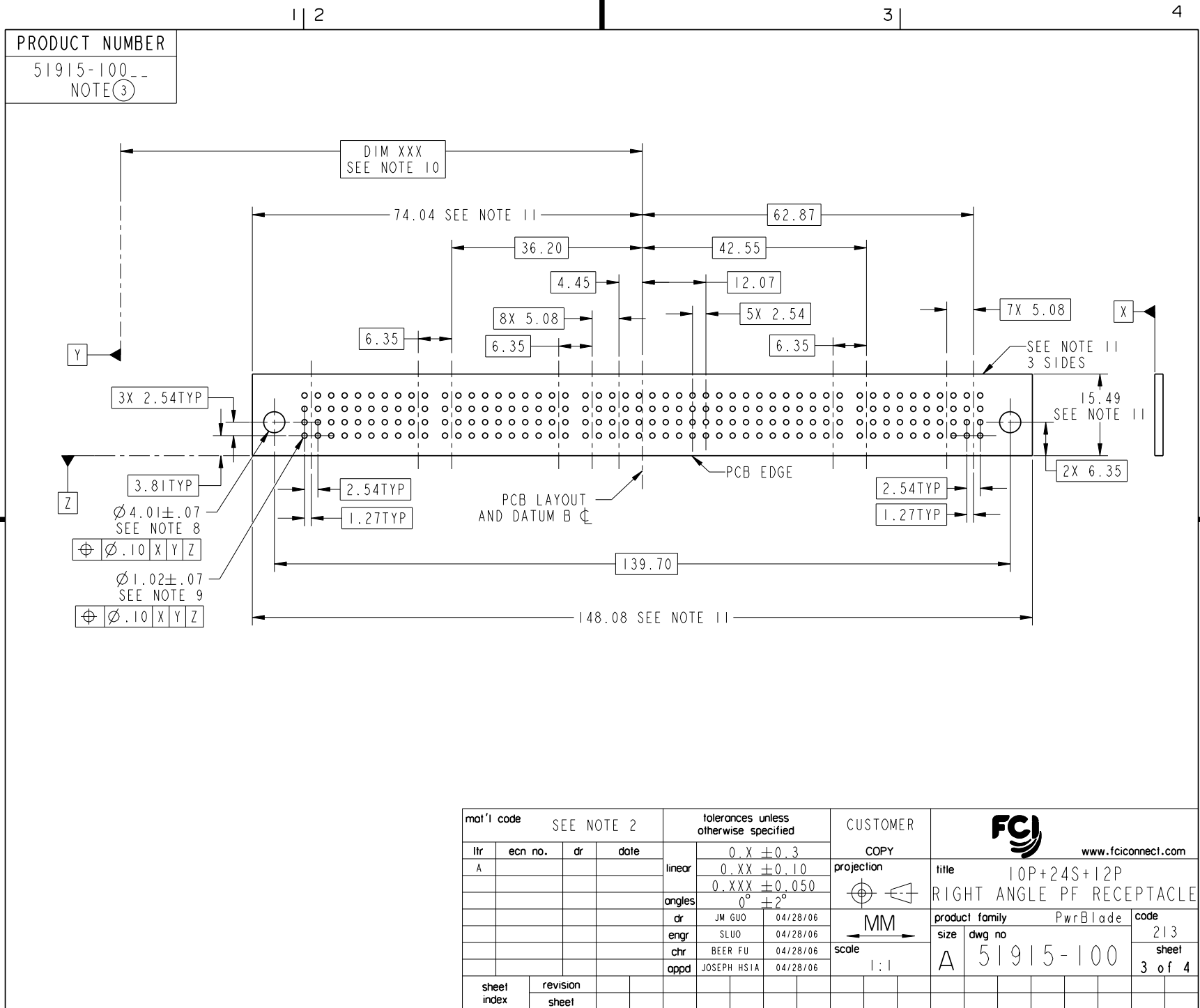
STAT: Released

Printed: Dec 20, 2010

Tous droits strictement réservés. Reproduction ou communication a des tiers interdite sous quelque forme que ce soit sans autorisation écrite du propriétaire. Propriété de c FCI. Droits de reproduction FCI.



All rights strictly reserved. Reproduction or issue to third parties in any form whatever is not permitted without written authority from the proprietor. Property of FCI. Copyright FCI.



mat'l code		SEE NOTE 2		tolerances unless otherwise specified		CUSTOMER		FCI www.fciconnect.com	
lir	ecn no.	dr	date	linear	0.X ±0.3	COPY		title	
A				0.XX ±0.10	0.XXX ±0.050	projection		10P+24S+12P	
				angles	0° ±2°	MM		RIGHT ANGLE PF RECEPTACLE	
				dr	JM GUO 04/28/06	scale		product family	
				enr	SLUO 04/28/06	1:1		PwrBlade	
				chr	BEER FU 04/28/06			code	
				appd	JOSEPH HSIA 04/28/06			213	
sheet index	revision sheet							size	
								dwg no	
								A 51915-100	
								sheet	
								3 of 4	

A

A

B

B

1 | 2

3 |

4

1 | 2

Pro/E

PDM: Rev: A

STAT: Released

Printed: Dec 20, 2010

Tous droits strictement réservés. Reproduction ou communication a des tiers interdite sous quelque forme que ce soit sans autorisation écrite du propriétaire. Propriété de c FCI. Droits de reproduction FCI.



All rights strictly reserved. Reproduction or issue to third parties in any form whatever is not permitted without written authority from the proprietor. Property of FCI. Copyright FCI.

1 | 2

3 |

4

PRODUCT NUMBER

51915-100__
NOTE ③

NOTES:

1. DIMENSIONS AND TOLERANCES ARE IN ACCORDANCE WITH ASME Y14.5M, 1994 UNLESS OTHERWISE SPECIFIED.

CONNECTOR NOTES:

- ② HOUSING MATERIAL: UL 94 V-0 GLASS FILLED
HIGH-TEMP THERMOPLASTIC
POWER CONTACT MATERIAL: COPPER ALLOY
SIGNAL PIN MATERIAL: COPPER ALLOY
- 3. PLATING:
51915-100,51915-100LF PLATING SPEC. WAS SHOWN IN THE PRINT OF 10064183.
- ④ MANUFACTURER'S NAME, P/N, AND DATE CODE TO APPEAR ON THIS SURFACE.
- 5. PRODUCT SPECIFICATION GS-12-149.
APPLICATION SPECIFICATION BUS-20-067.
- 6. PACKAGED IN TRAYS.

PCB NOTES:

- 7. ALL HOLE DIAMETERS ARE FINISHED HOLE SIZE.
- ⑧ MOUNTING HOLES, WHERE APPLICABLE, ARE UNPLATED.
- ⑨ $\varnothing .0453 \pm .0010$ [1.151 ± 0.025] DRILLED HOLES PLATED WITH $.0003$ [0.008] MIN SnPb OVER $.001$ [0.03] TO $.003$ [0.08] Cu PLATING TO ACHIEVE $\varnothing .040 \pm .003$ [$1.02 \pm .07$] HOLE.
- ⑩ "DIM XXX" TO BE DETERMINED BY THE CUSTOMER.
- ⑪ CONNECTOR KEEP-OUT ZONE.
- 12. USE FCI CAM TOOL 430140-XXX TO APPLY CONNECTOR TO PCB.

mat'l code		SEE NOTE 2		tolerances unless otherwise specified		CUSTOMER		FCI www.fciconnect.com		
lir	ecn no.	dr	date	linear	0.X ±0.3		projection	COPY		
A					0.XX ±0.10				title 10P+24S+12P	
					0.XXX ±0.050				RIGHT ANGLE PF RECEPTACLE	
				angles	0° ±2°			product family PwrBlade		
				dr	JM GUO	04/28/06		size	dwg no	code
				enrg	SLUO	04/28/06		A	51915-100	213
				chr	BEER FU	04/28/06		scale		sheet
				appd	JOSEPH HSIA	04/28/06		1:1		4 of 4
sheet index	revision sheet									

1 | 2

Pro/E

PDM: Rev: A

STAT: Released

Printed: Dec 20, 2010