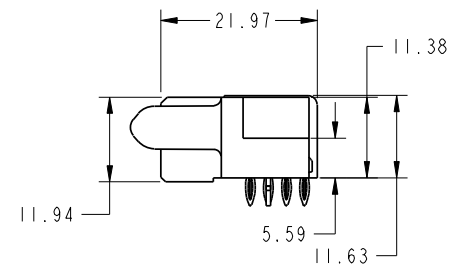
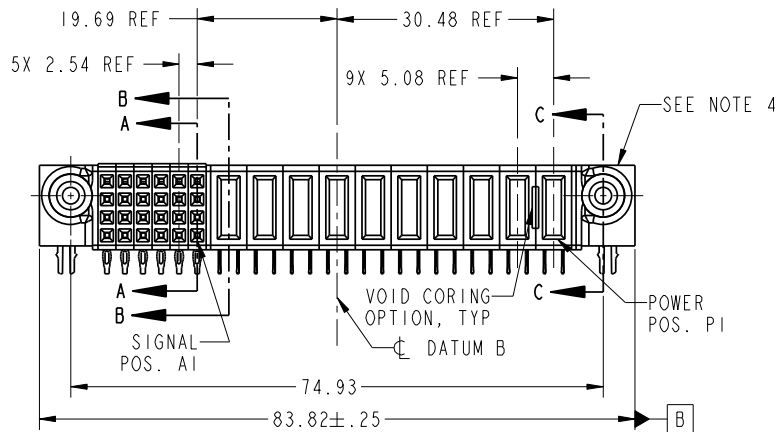
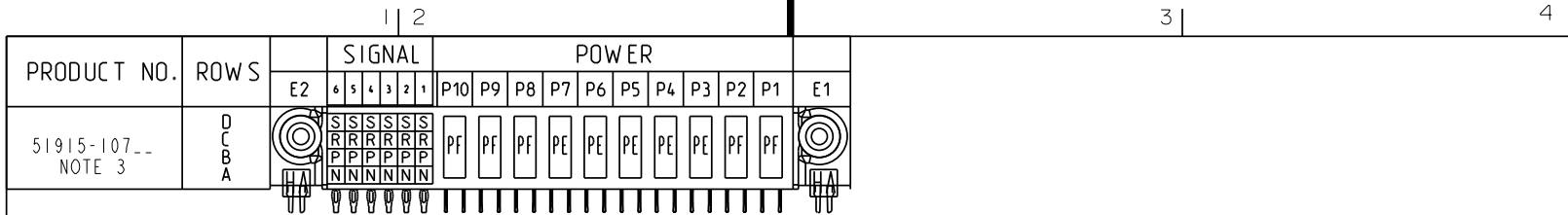


Tous droits strictement reserves. Reproduction ou communication a des tiers interdite sous quelque forme que ce soit sans autorisation écrite du propriétaire. Propriete de c FCI. Droits de reproduction FCI.



All rights strictly reserved. Reproduction or issue to third parties in any form whatever is not permitted without written authority from the proprietor. Property of FCI. Copyright FCI.



CODE	DIM "M" MATING LENGTH	CONTACT TYPE
S	[N/A]	SIGNAL
R	[N/A]	SIGNAL
P	[N/A]	SIGNAL
N	[N/A]	SIGNAL
HA	[N/A]	HOLD-DOWN
PF	[2.34]	POWER
PE	[1.07]	POWER

mat'l code				tolerances unless otherwise specified		CUSTOMER			
lir	ecn no.	dr	date	linear	0.X ±0.3	COPY			
A	DG06-0258	JUL1A	28/06/06	angles	0.XX ±0.13	projection	title		
				dr	0.XXX ±0.051	 MM	10P+24S R/A PF RECEPT		
				enrg	JULIA WANG 28/06/06			product family	code
				chr	SALLY LUO 28/06/06			size	dwg no
				appd	BEER FU 28/06/06			A	51915-107
sheet index	revision sheet	A	A	A	A	scale	1:1	sheet 1 of 4	
		1	2	3	4				

www.fciconnect.com

title: 10P+24S R/A PF RECEPT

product family: PwrBlade

size: A

dwg no: 51915-107

code: 213

sheet: 1 of 4

cage code: 22526

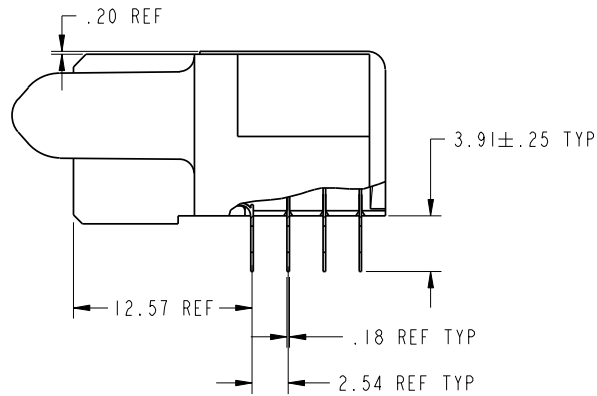
Pro/E

Tous droits strictement reserves. Reproduction ou communication a des tiers interdite sous quelque forme que ce soit sans autorisation écrite du propriétaire. Propriete de c FCI. Droits de reproduction FCI.

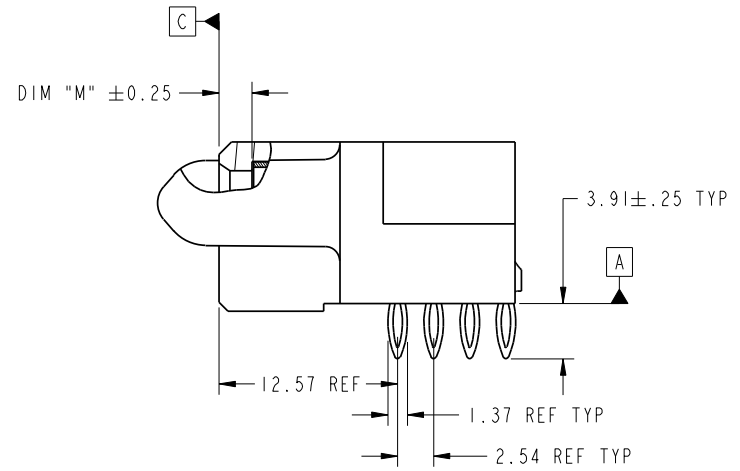


All rights strictly reserved. Reproduction or issue to third parties in any form whatever is not permitted without written authority from the proprietor. Property of FCI. Copyright FCI.

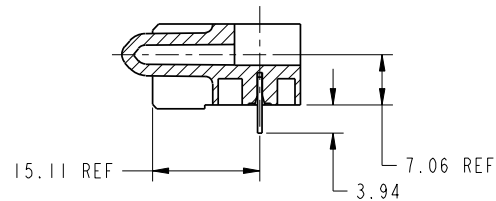
PRODUCT NUMBER
51915-107--
NOTE 3



BROKEN-OUT SECTION A-A
SCALE 2:1



BROKEN-OUT SECTION B-B
SCALE 2:1



SECTION C-C

mat'l code		SEE NOTE 2		tolerances unless otherwise specified		CUSTOMER		FCI	
lfr	ecr no.	dr	date	linear	0.X ± 0.3	COPY		www.fciconnect.com	
A					0.XX ± 0.13	projection		title	
				angles	0.XXX ± 0.051			10P+24S R/A PF RECEIPT	
				dr	JULIA WANG 28/06/06			product family PwrBlade	
				enrg	SALLY LUO 28/06/06			code 213	
				chr	BEER FU 28/06/06	scale 1:1		size	
				appd	JOSEPH HSIA 28/06/06			dwg no 51915-107	
sheet index		revision sheet						sheet 2 of 4	

cage code 22526

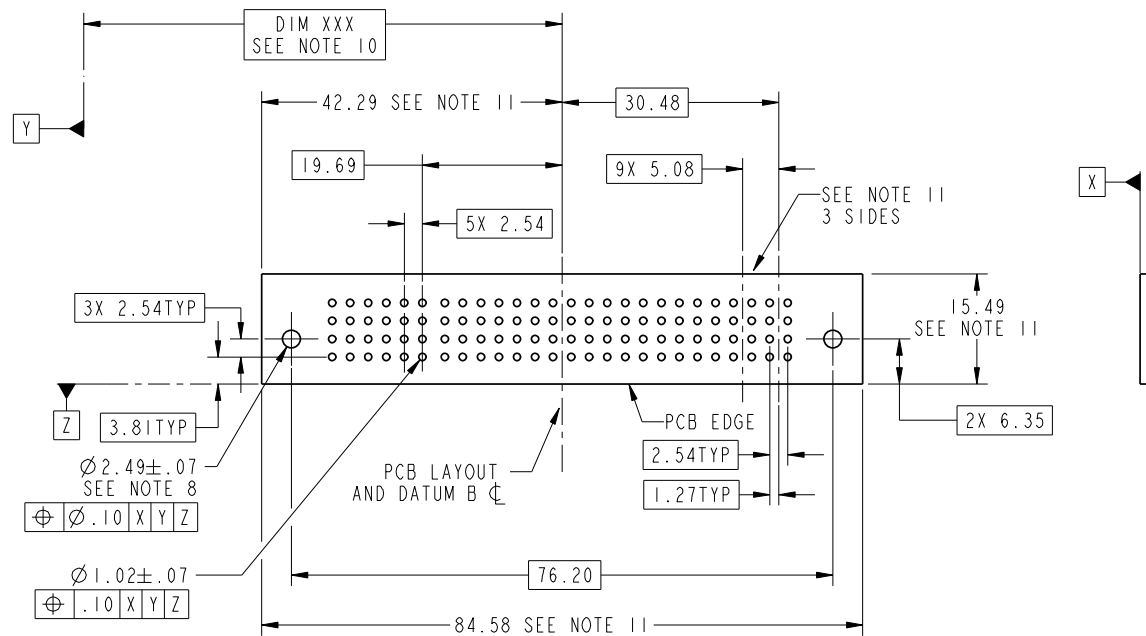
Pro/E

Tous droits strictement reserves. Reproduction ou communication a des tiers interdite sous quelque forme que ce soit sans autorisation écrite du propriétaire. Propriete de c FCI. Droits de reproduction FCI.



All rights strictly reserved. Reproduction or issue to third parties in any form whatever is not permitted without written authority from the proprietor. Property of FCI. Copyright FCI.

PRODUCT NUMBER
51915-107--
NOTE 3



mat'l code				SEE NOTE		tolerances unless otherwise specified		CUSTOMER		FCI	
lfr	ecr no.	dr	date	linear	0.X ±0.3	COPY		www.fciconnect.com		title	
A					0.XX ±0.13	projection		10P+24S		R/A PF RECEIPT	
				angles	0.XXX ±0.051	MM		product family		PwrBlade	code
				dr	JULIA WANG 28/06/06	scale		size		dwg no	213
				enrg	SALLY LUO 28/06/06	1:1		A		51915-107	sheet
				chr	BEER FU 28/06/06						3 of 4
				appd	JOSEPH HSIA 28/06/06						
sheet index	revision sheet										

cage code 22526

Pro/E

Tous droits strictement reserves. Reproduction ou communication a des tiers interdite sous quelque forme que ce soit sans autorisation écrite du propriétaire. Propriete de c FCI. Droits de reproduction FCI.



All rights strictly reserved. Reproduction or issue to third parties in any form whatever is not permitted without written authority from the proprietor. Property of FCI. Copyright FCI.

PRODUCT NUMBER
51915-107--
NOTE 3

NOTES:

1. DIMENSIONS AND TOLERANCES ARE IN ACCORDANCE WITH ASME Y14.5M, 1994 UNLESS OTHERWISE SPECIFIED.

CONNECTOR NOTES:

- 2. HOUSING MATERIAL: UL 94 V-0 GLASS FILLED
HIGH-TEMP THERMOPLASTIC
POWER CONTACT MATERIAL: COPPER ALLOY
SIGNAL PIN MATERIAL: COPPER ALLOY
- 3. PLATING:
51915-107,51915-107LF PLATING SPEC. WAS SHOWN IN THE PRINT OF 10064183.
- 4. MANUFACTURER'S NAME, P/N, AND DATE CODE TO APPEAR ON THIS SURFACE.
- 5. PRODUCT SPECIFICATION GS-12-149.
APPLICATION SPECIFICATION BUS-20-067.
- 6. PACKAGED IN TRAYS.

PCB NOTES:

- 7. ALL HOLE DIAMETERS ARE FINISHED HOLE SIZE.
- 8. MOUNTING HOLES, WHERE APPLICABLE, ARE UNPLATED.
- 9. $\varnothing 1.151 \pm 0.025$ DRILLED HOLES PLATED WITH
0.008 MIN SnPb or Sn OVER 0.03
TO 0.08 Cu PLATING TO ACHIEVE
 $\varnothing 1.02 \pm .07$ HOLE.
- 10. "DIM XXX" TO BE DETERMINED BY THE CUSTOMER.
- 11. CONNECTOR KEEP-OUT ZONE.
- 12. USE FCI CAM TOOL 430140-XXX
TO APPLY CONNECTOR TO PCB.

mat'l code				SEE NOTE 2		tolerances unless otherwise specified		CUSTOMER		FCI		www.fciconnect.com	
lfr	ecn no.	dr	date	linear	0.X ± 0.3	COPY		projection		title			
A					0.XX ± 0.13					10P+24S R/A PF RECEIPT			
				angles	0.XXX ± 0.051					product family		PwrBlade	code
				dr	0° ± 2°	JULIA WANG	28/06/06	scale		size	dwg no	213	sheet
				enrg		SALLY LUO	28/06/06	1:1		A	51915-107	4 of 4	
				chr		BEER FU	28/06/06						
				appd		JOSEPH HSIA	28/06/06						
sheet index	revision sheet												

cage code 22526

Pro/E