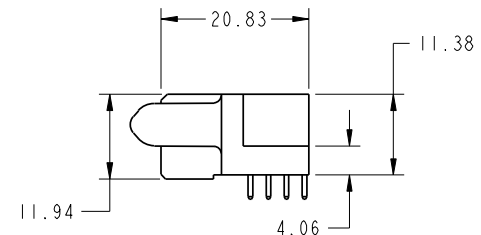
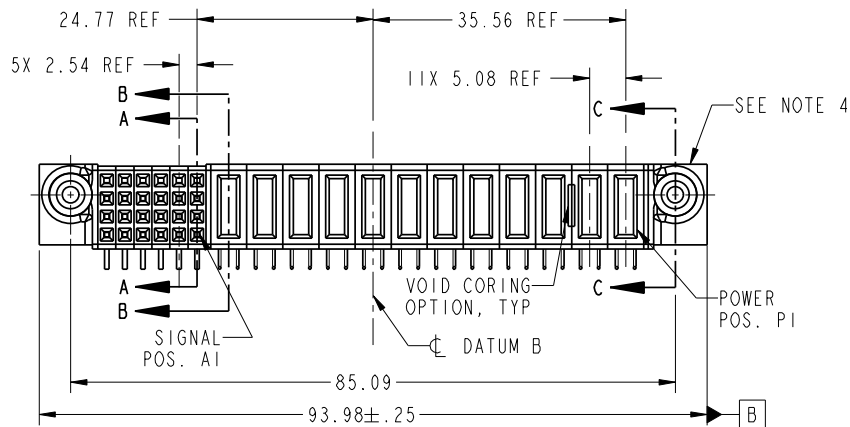
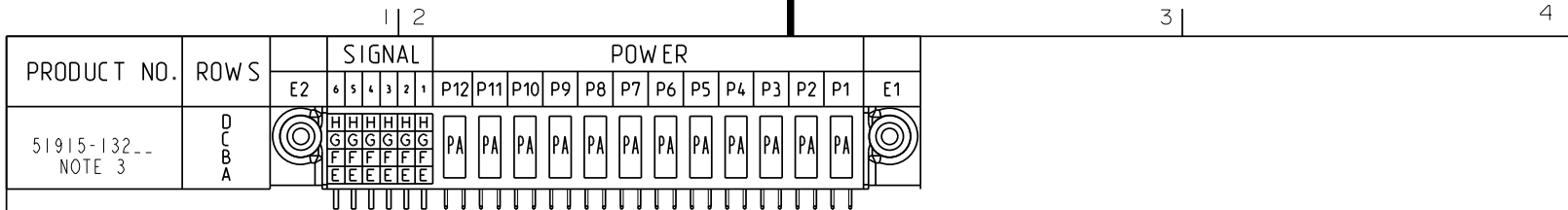


Tous droits strictement reserves. Reproduction ou communication a des tiers interdite sous quelque forme que ce soit sans autorisation écrite du propriétaire. Propriete de c FCI. Droits de reproduction FCI.



All rights strictly reserved. Reproduction or issue to third parties in any form whatever is not permitted without written authority from the proprietor. Property of FCI. Copyright FCI.



CODE	DIM "M" MATING LENGTH	CONTACT TYPE
PA	[1.07]	POWER
H	[N/A]	SIGNAL
G	[N/A]	SIGNAL
F	[N/A]	SIGNAL
E	[N/A]	SIGNAL

mat'l code				tolerances unless otherwise specified		CUSTOMER		
SEE NOTE 2						FCI		
lir	ecn no.	dr	date	linear	0.X ±0.3	www.fciconnect.com		
A	DG07-0337	JUL1A	28/06/06		0.XX ±0.13	COPY		
				angles	0.XXX ±0.051	projection		
				dr	0° ±2°			
				enr	JULIA WANG 28/06/06	title		
				chr	JEROME CHEN 28/06/06	I2P+24S		
				appd	GARY HSIEH 28/06/06	R/A STB RECEIPT		
					JOSEPH HSIA 28/06/06	product family PwrBlade		
sheet index	revision sheet	A	A	A	A	size	dwg no	code
		1	2	3	4	A	51915-132	213
						scale		sheet
						1:1		1 of 4

sheet index		revision sheet		A		A		A		A	
		1	2	3	4						

cage code 22526

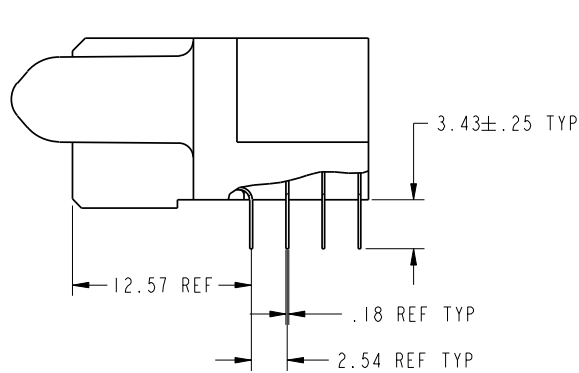
Pro/E

Tous droits strictement reserves. Reproduction ou communication a des tiers interdite sous quelque forme que ce soit sans autorisation écrite du propriétaire. Propriete de c FCI. Droits de reproduction FCI.

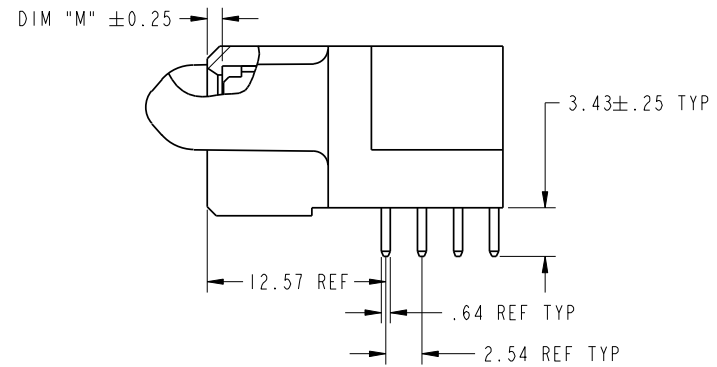


All rights strictly reserved. Reproduction or issue to third parties in any form whatever is not permitted without written authority from the proprietor. Property of FCI. Copyright FCI.

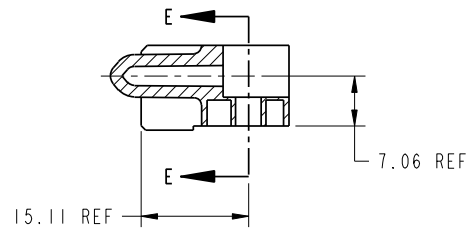
PRODUCT NUMBER
51915-132--
NOTE 3



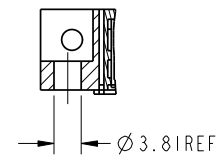
BROKEN-OUT SECTION A-A
SCALE 2:1



BROKEN-OUT SECTION B-B
SCALE 2:1



SECTION C-C



PARTIAL SECTION E-E

mat'l code				SEE NOTE 2		tolerances unless otherwise specified		CUSTOMER		FCI		www.fciconnect.com	
lfr	ecn no.	dr	date	linear	0.X ± 0.3	projection		COPY		title			
A					0.XX ± 0.13	MM		A		I2P+24S			
				angles	0.XXX ± 0.051	1:1		R/A STB RECEIPT		product family		code	
				dr	JULIA WANG 28/06/06			PwrBlade		size		213	
				enr	JEROME CHEN 28/06/06			A		dwg no		sheet	
				chr	GARY HSIEH 28/06/06			51915-132		2 of 4			
				appd	JOSEPH HSIA 28/06/06								
sheet index	revision sheet												

1 | 2

Pro/E

3 |

cage code 22526

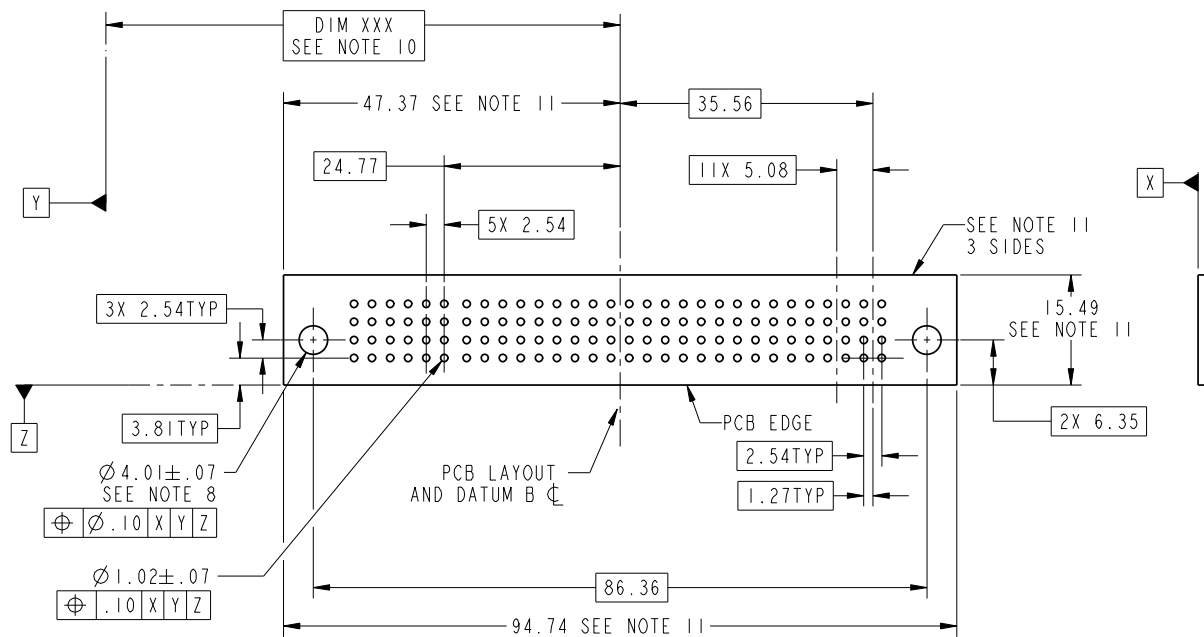
4

Tous droits strictement reserves. Reproduction ou communication a des tiers interdite sous quelque forme que ce soit sans autorisation écrite du propriétaire. Propriete de c FCI. Droits de reproduction FCI.



All rights strictly reserved. Reproduction or issue to third parties in any form whatever is not permitted without written authority from the proprietor. Property of FCI. Copyright FCI.

PRODUCT NUMBER
51915-132--
NOTE 3



mat'l code				SEE NOTE		tolerances unless otherwise specified		CUSTOMER		FCI		www.fciconnect.com	
lfr	ecr no.	dr	date	linear	0.X ±0.3	projection		COPY		title			
A					0.XX ±0.13	MM		A		12P+24S R/A STB RECEIPT			
				angles	0.XXX ±0.051	scale		1:1		product family		code	
				dr	JULIA WANG 28/06/06					PwrBlade		213	
				enrg	JEROME CHEN 28/06/06					size		sheet	
				chr	GARY HSIEH 28/06/06					51915-132		3 of 4	
				appd	JOSEPH HSIA 28/06/06								
sheet index	revision sheet												

cage code 22526

Pro/E

Tous droits strictement reserves. Reproduction ou communication a des tiers interdite sous quelque forme que ce soit sans autorisation écrite du propriétaire. Propriete de c FCI. Droits de reproduction FCI.



All rights strictly reserved. Reproduction or issue to third parties in any form whatever is not permitted without written authority from the proprietor. Property of FCI. Copyright FCI.

PRODUCT NUMBER
51915-132--
NOTE 3

NOTES:

1. DIMENSIONS AND TOLERANCES ARE IN ACCORDANCE WITH ASME Y14.5M, 1994 UNLESS OTHERWISE SPECIFIED.

CONNECTOR NOTES:

- 2. HOUSING MATERIAL: UL 94 V-0 GLASS FILLED HIGH-TEMP THERMOPLASTIC
POWER CONTACT MATERIAL: COPPER ALLOY
SIGNAL PIN MATERIAL: COPPER ALLOY
 - 3. PLATING:
51915-132, 51915-132LF PLATING SPEC. WAS SHOWN IN THE PRINT OF 10064183.
 - 4. MANUFACTURER'S NAME, P/N, AND DATE CODE TO APPEAR ON THIS SURFACE.
 - 5. PRODUCT SPECIFICATION GS-12-149.
APPLICATION SPECIFICATION BUS-20-067.
 - 6. PACKAGED IN TRAYS.
- PCB NOTES:
- 7. ALL HOLE DIAMETERS ARE FINISHED HOLE SIZE.
 - 8. MOUNTING HOLES, WHERE APPLICABLE, ARE UNPLATED.
 - 9. $\varnothing 1.151 \pm 0.025$ DRILLED HOLES PLATED WITH 0.008 MIN SnPb or Sn OVER 0.03 TO 0.08 Cu PLATING TO ACHIEVE $\varnothing 1.02 \pm .07$ HOLE.
 - 10. "DIM XXX" TO BE DETERMINED BY THE CUSTOMER.
 - 11. CONNECTOR KEEP-OUT ZONE.

mat'l code				SEE NOTE 2		tolerances unless otherwise specified		CUSTOMER		FCI		www.fciconnect.com	
lfr	ecm no.	dr	date	linear	0.X ± 0.3	COPY		projection		title			
A					0.XX ± 0.13					12P+24S R/A STB RECEIPT			
				angles	0.XXX ± 0.051					product family		PwrBlade	code
				dr	0° ± 2°	JULIA WANG	28/06/06	scale		size	dwg no	213	sheet
				engr		JEROME CHEN	28/06/06	1:1		A	51915-132	4 of 4	
				chr		GARY HSIEH	28/06/06						
				appd		JOSEPH HSIA	28/06/06						
sheet index	revision sheet												

cage code 22526