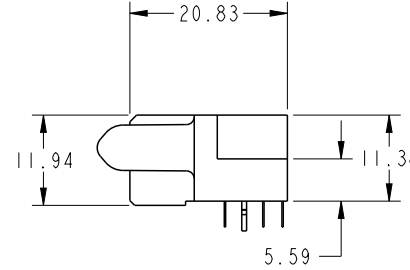
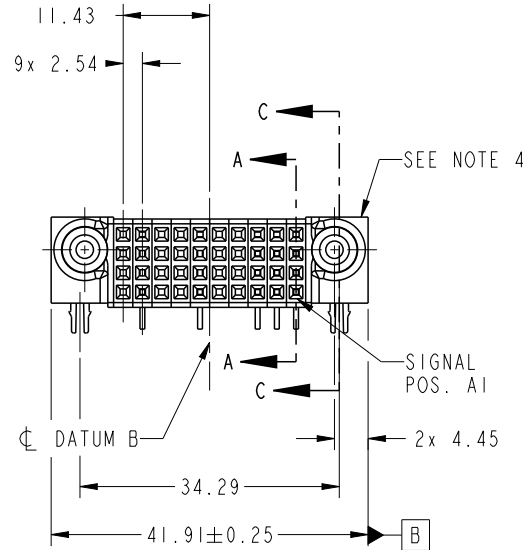


PRODUCT NO.	ROWS	SIGNAL											
		E2	10	9	8	7	6	5	4	3	2	1	E1
51915-525LF	D	⊕	X	H	X	X	H	X	X	H	H	H	⊕
	C		X	X	X	X	X	X	G	G	G		
	B		X	X	X	X	X	X	F	F	F		
	A		X	E	X	X	E	X	E	E			

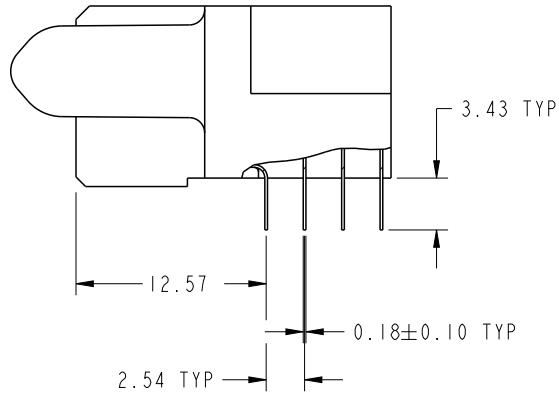


CODE	DIM "M" MATING LENGTH	CONTACT TYPE
H	[N/A]	SIGNAL
G	[N/A]	SIGNAL
F	[N/A]	SIGNAL
E	[N/A]	SIGNAL
HA	[N/A]	HOLD-DOWN
X	OMITTED	

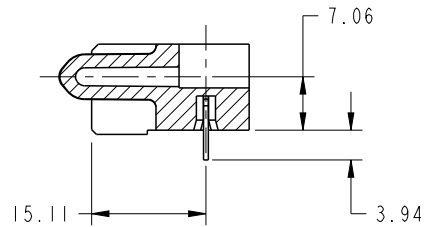
spec ref		SEE NOTES		dr	Fang Qian	2016/03/29	projection 	MM ←→	size	A4	scale	1:1	
tolerance std		TOLERANCES UNLESS OTHERWISE SPECIFIED		eng	Fang Qian	2016/03/31			ecn no	-			
SEE NOTES				chr	Fancy Zhang	2016/03/31				rel level		Released	
surface		linear	0.X ±0.50	Amphenol FCI		title	40S		dwg no	51915-525		rev	A
			0.XX ±0.25				R/A STB RECEPTACLE			Product - Customer Drw		sheet 1 of 4	
		angular	0° ±2°			cat. no.							

PRODUCT NUMBER

51915-525LF



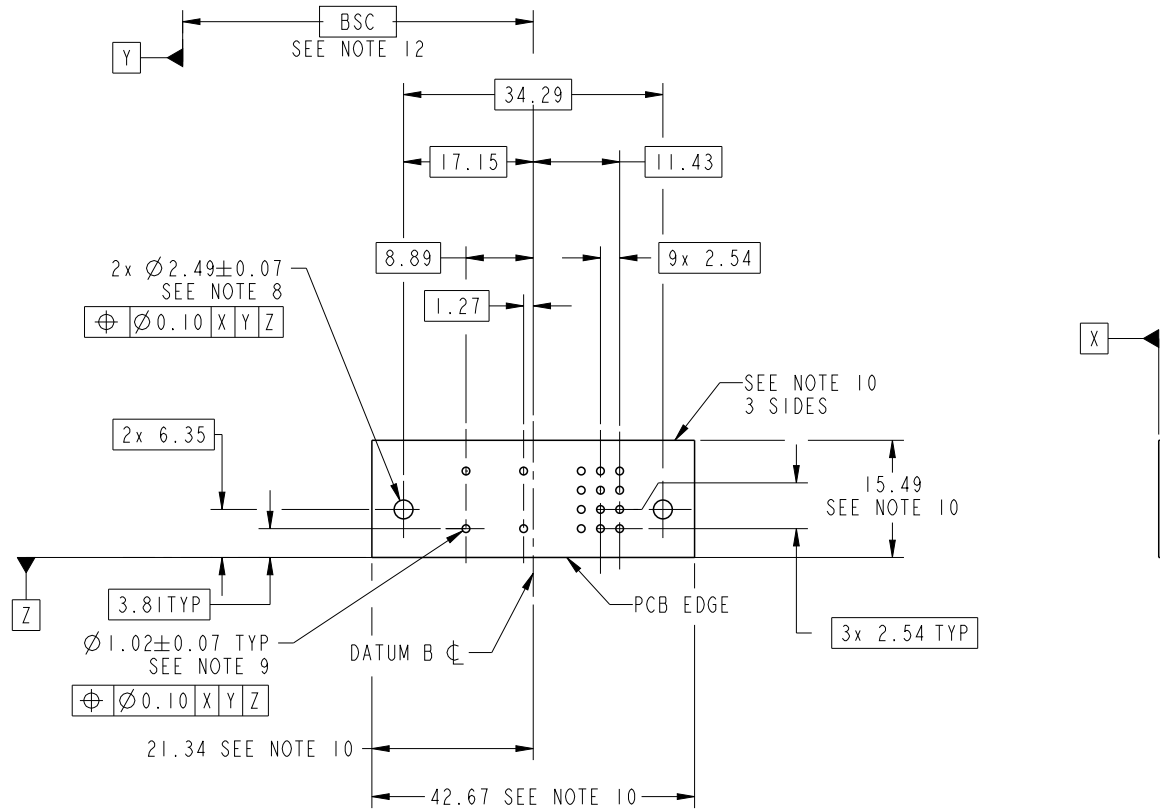
BROKEN-OUT SECTION A-A
SCALE 2:1



SECTION C-C

spec ref		SEE NOTES		dr	Fang Qian	2016/03/29	projection 	MM 	size	A4	scale	1:1
tolerance std		TOLERANCES UNLESS OTHERWISE SPECIFIED		eng	Fang Qian	2016/03/31			ecn no	-		
SEE NOTES				chr	Fancy Zhang	2016/03/31				rel level		Released
surface		linear	0.X ±0.50	appr	Pei-Ming Zheng	2016/03/31	product family		PwrBlade			
			0.XX ±0.25	Amphenol FCI title 40S R/A STB RECEPTACLE cat. no.			dwg no		51915-525		rev	A
		angular	0° ±2°				Product - Customer Drw		sheet 2 of 4			

PRODUCT NUMBER
51915-525LF



RECOMMENDED PCB LAYOUT

spec ref	SEE NOTES			dr	Fang Qian	2016/03/29	projection 	MM ←→	size	A4	scale	1:1
tolerance std	TOLERANCES UNLESS OTHERWISE SPECIFIED			eng	Fang Qian	2016/03/31			ecn no	-	rel level	Released
SEE NOTES				chr	Fancy Zhang	2016/03/31						
surface	linear	0.X	±0.50	Amphenol FCi	title	40S	product family	PwrBlade	dwg no	51915-525	rev	A
		0.XX	±0.25									
		0.XXX	±0.10									
	angular	0°	±2°	cat. no.	Product - Customer Drw			sheet 3 of 4				

PRODUCT NUMBER

51915-525LF

NOTES:

1. DIMENSIONS AND TOLERANCES ARE IN ACCORDANCE WITH ASME Y14.5M, 1994 UNLESS OTHERWISE SPECIFIED.

CONNECTOR NOTES:

2. HOUSING MATERIAL: UL 94 V-0 GLASS FILLED HIGH-TEMP THERMOPLASTIC

POWER CONTACT MATERIAL: COPPER ALLOY
SIGNAL PIN MATERIAL: COPPER ALLOY

3. SEE FCI PLATING SPEC 10064183.

4. MANUFACTURER'S NAME, DATE CODE AND OPTIONAL P/N TO APPEAR ON THIS SURFACE. THE MARK CAN BE OMITTED IF THERE IS NOT ENOUGH SPACE ON THIS SURFACE.

5. PRODUCT SPECIFICATION GS-12-149.
APPLICATION SPECIFICATION BUS-20-067.

6. PACKAGED IN TRAYS.

PCB NOTES:

7. ALL HOLE DIAMETERS ARE FINISHED HOLE SIZE.

8. MOUNTING HOLES, WHERE APPLICABLE, ARE UNPLATED.

9. $\varnothing 1.151 \pm 0.025$ DRILLED HOLES PLATED WITH
0.008 MIN SnPb OR Sn OVER 0.03
TO 0.08 Cu PLATING TO ACHIEVE
 $\varnothing 1.02 \pm .07$ HOLE.

10. CONNECTOR KEEP-OUT ZONE.

11. THE VOID CORING IN BETWEEN POWER MODULES, SIGNAL MODULES AND END MODULES ARE OPTIONAL AND THE SHAPE MAY BE DIFFERENT FOR OPTIMIZE THE MOLDING PROCESS. THE VOID CORING WILL NOT EFFECT TO PRODUCT FUNCTION.

12. DATUM AND BASIC DIMENSIONS ARE ESTABLISHED BY CUSTOMER.

spec ref		SEE NOTES		dr	Fang Qian	2016/03/29	projection 	MM 	size	A4	scale	1:1	
tolerance std		TOLERANCES UNLESS OTHERWISE SPECIFIED		eng	Fang Qian	2016/03/31			ecn no	-			
SEE NOTES				chr	Fancy Zhang	2016/03/31			product family	PwrBlade		rel level	Released
surface	linear	0.X	± 0.50	Amphenol FCi	title	40S	dwg no	51915-525	rev	A	cat. no.	Product - Customer Drw	sheet 4 of 4
		0.XX	± 0.25										
		0.XXX	± 0.10										
	angular	0°	$\pm 2^\circ$										