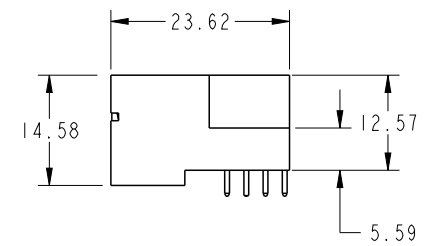
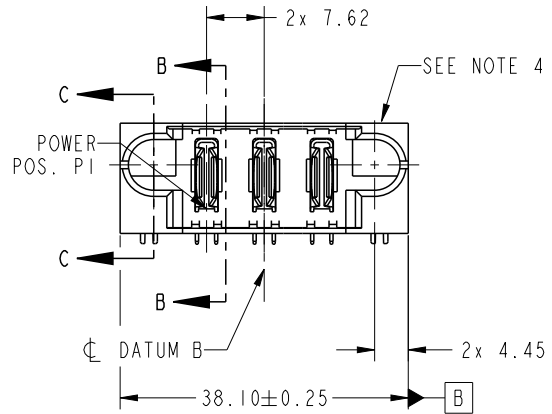


PRODUCT NO. 51939-059-SHD NOTE 3	POWER				
	E1	P1	P2	P3	E2



Copyright FCI.

CODE	DIM "M" MATING LENGTH	CONTACT TYPE
PA	[N/A]	POWER
HA	[N/A]	HOLD-DOWN

spec ref	*	dr	Ruan MT	2015/01/07		MM	size	A4	scale	1:1			
tolerance std	TOLERANCES UNLESS OTHERWISE SPECIFIED	eng	Ruan MT	2015/07/07				PwrBlade	ecn no	ELX-DG-21340-1			
ASME Y14.5		chr	Fancy Zhang	2015/07/14					product family	rel level	Released		
surface		linear	appr	Pei-Ming Zheng					2015/07/15	product family	PwrBlade		
ASME Y14.5	angular			title 3ACP RIGHT ANGLE STB HEADER	dwg no 51939-059-SHD	rev B							
		www.fci.com	cat. no.	-	Product - Customer Drw			sheet 1 of 4					

PrdE File - REV C - 2009-06-09

PRODUCT NUMBER

51939-059_SHD
NOTE: 3

A

B

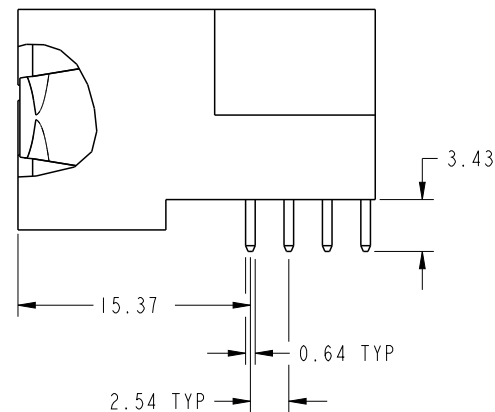
C

D

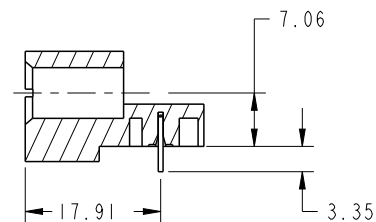
2

3

4



BROKEN-OUT SECTION B-B
SCALE 2:1



SECTION C-C

dr	Ruan MT	2015/01/07	projection 	MM ←————→	size	A4	scale	1:1	
eng	Ruan MT	2015/07/07			ecn no	ELX-DG-21340-1			
chr	Fancy Zhang	2015/07/14			product family	PwrBlade		rel level	Released
appr	Pei-Ming Zheng	2015/07/15			dwg no	51939-059-SHD		rev	B
www.fci.com		cat. no.	-		Product - Customer Drw		sheet 2 of 4		

2

3

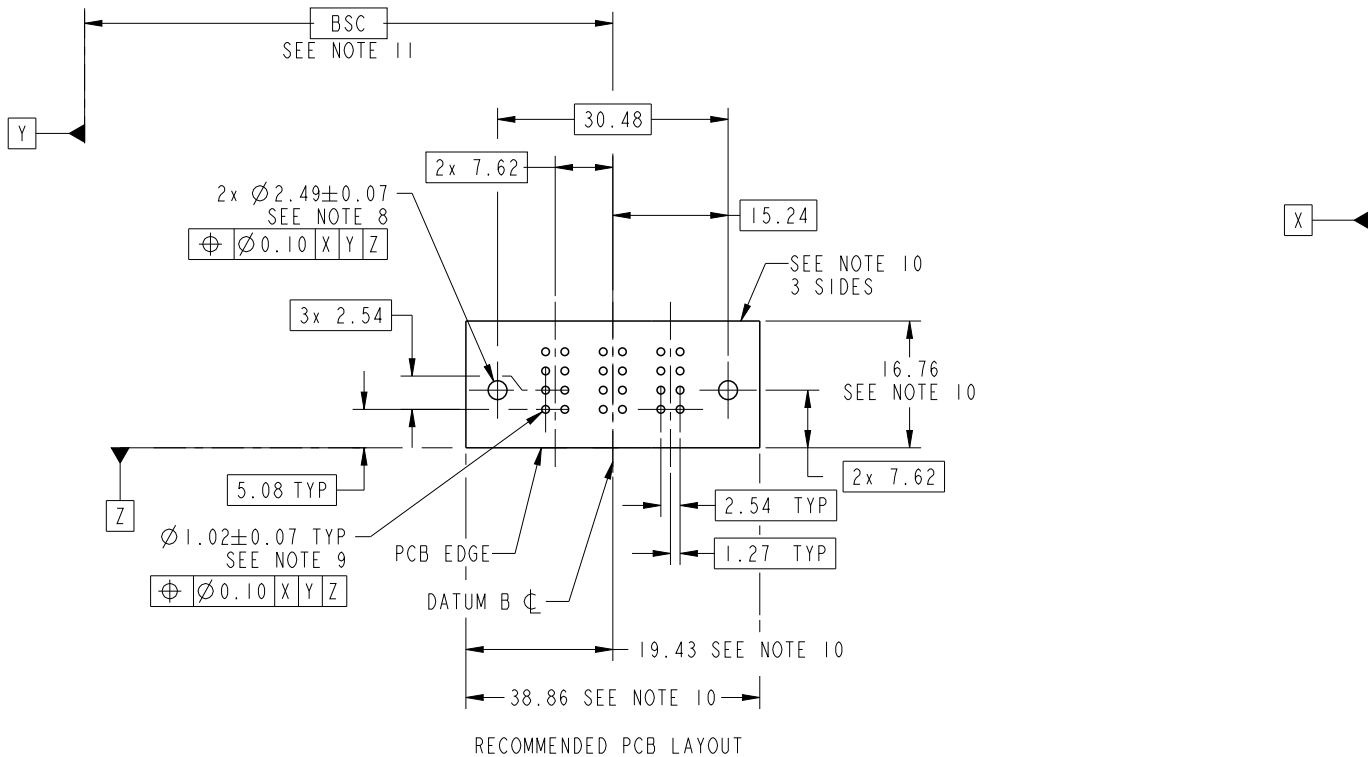
4

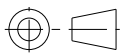



Copyright FCI.

PRODUCT NUMBER

51939-059_SHD
NOTE: 3



dr	Ruan MT	2015/01/07	projection 	MM 	size	A4	scale	1:1			
eng	Ruan MT	2015/07/07			ecn no	ELX-DG-21340-1					
chr	Fancy Zhang	2015/07/14			product family	PwrBlade		rel level	Released		
appr	Pei-Ming Zheng	2015/07/15	www.fci.com		title	3ACP RIGHT ANGLE STB HEADER		dwg no	51939-059-SHD	rev	B
cat. no.			-	Product - Customer Drw			sheet 3 of 4				

PRODUCT NUMBER

51939-059-SHD
NOTE: 3

NOTES:

1. DIMENSIONS AND TOLERANCES ARE IN ACCORDANCE WITH ASME Y14.5M, 1994 UNLESS OTHERWISE SPECIFIED.

CONNECTOR NOTES:

② HOUSING MATERIAL: UL 94 V-0 GLASS FILLED HIGH-TEMP THERMOPLASTIC

POWER CONTACT MATERIAL: COPPER ALLOY
SIGNAL PIN MATERIAL: COPPER ALLOY

⚠ 3. SEE ITEM 1 & 2 IN PRINT 10064183 FOR PLATING SPEC OF 51939-059-SHD AND 51939-059LF-SHD RESPECTIVELY.

④ MANUFACTURER'S NAME, DATE CODE AND OPTIONAL P/N TO APPEAR ON THIS SURFACE. THE MARK CAN BE OMITTED IF THERE IS NOT ENOUGH SPACE ON THIS SURFACE.

5. PRODUCT SPECIFICATION GS-12-149.
APPLICATION SPECIFICATION BUS-20-067.

6. PACKAGED IN TRAYS.

PCB NOTES:

7. ALL HOLE DIAMETERS ARE FINISHED HOLE SIZE.

⑧ MOUNTING HOLES, WHERE APPLICABLE, ARE UNPLATED.

⑨ $\varnothing 1.151 \pm 0.025$ DRILLED HOLES PLATED WITH
0.008 MIN SnPb OR Sn OVER 0.03
TO 0.08 Cu PLATING TO ACHIEVE
 $\varnothing 1.02 \pm 0.07$ HOLE.

⑩ CONNECTOR KEEP-OUT ZONE.

⑪ DATUM AND BASIC DIMENSIONS ARE ESTABLISHED BY CUSTOMER.

12. A Δ SYMBOL WILL BE NEXT TO ANY DIMENSION, VIEW OR NOTE WHICH HAS BEEN MODIFIED WITH THE CURRENT DRAWING REVISION.



Copyright FCI.

dr	Ruan MT	2015/01/07	projection 	MM 	size	A4	scale	1:1			
eng	Ruan MT	2015/07/07			ecn no	ELX-DG-21340-1					
chr	Fancy Zhang	2015/07/14			product family	PwrBlade	rel level	Released			
appr	Pei-Ming Zheng	2015/07/15			www.fci.com	title	3ACP RIGHT ANGLE STB HEADER	dwg no	51939-059-SHD	rev	B
		cat. no.	-	Product - Customer Drw			sheet 4 of 4				