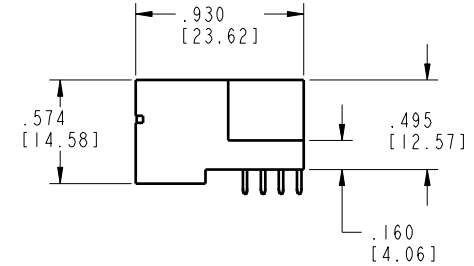
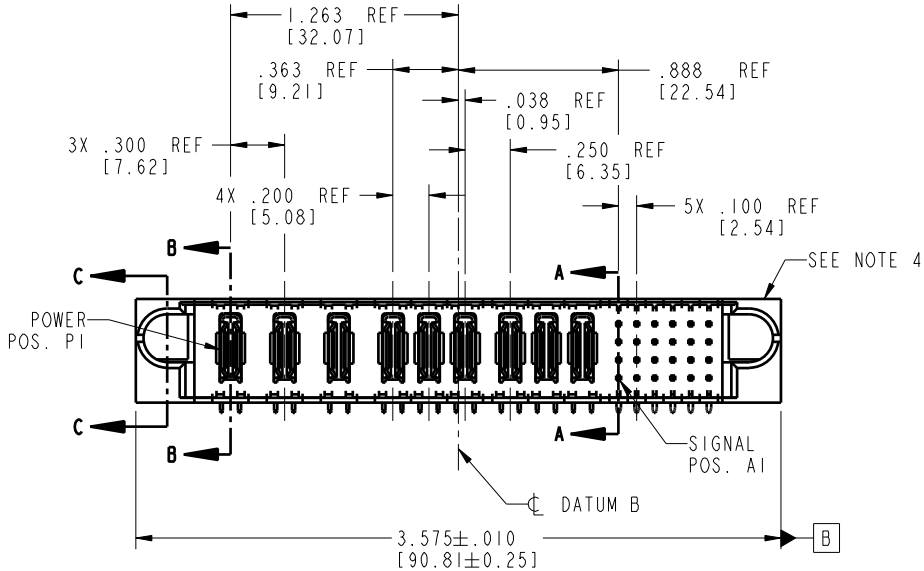
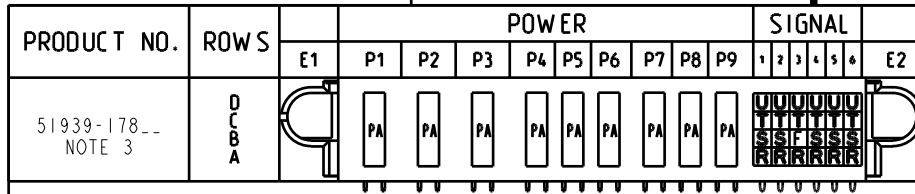


Tous droits strictement réservés. Reproduction ou communication o des liers interdite sous quelque forme que ce soit sans autorisation écrite du propriétaire. Propriété de c FCI. Droits de reproduction FCI.

All rights strictly reserved. Reproduction or issue to third parties in any form without written permission is not permitted without written authority from the proprietor. Property of FCI. Copyright FCI.



CODE	DIM "M" MATING LENGTH	CONTACT TYPE
F	.220 [5.59]	SIGNAL
R	.270 [6.86]	SIGNAL
S	.270 [6.86]	SIGNAL
T	.270 [6.86]	SIGNAL
U	.270 [6.86]	SIGNAL
PA	N/A [N/A]	POWER

mat'l code				tolerances unless otherwise specified		CUSTOMER	
SEE NOTE 2						FCI	
lir	ecr no.	dr	date	linear	projection	www.fciconnect.com	
A	DG05-0085	SW	04/20/05	.XX±.01/0.X±0.3		title 9P + 24S	
B	DG06-0013	RYAN	01/27/06	.XXX±.005/0.XX±0.13		RIGHT ANGLE SOLDER HEADER	
				angles	INCH/MM	product family	code
				0° ± 2°	1:1	PwrBlade	213
				dr	STEVEN WANG	size	sheet
				engr	STEVEN WANG	A	
				chr	VICTOR LIN	51939-178	1 of 4
				opqd	JOSEPH HSIA		
sheet index	revision	B	B	B	B		
	sheet	1	2	3	4		

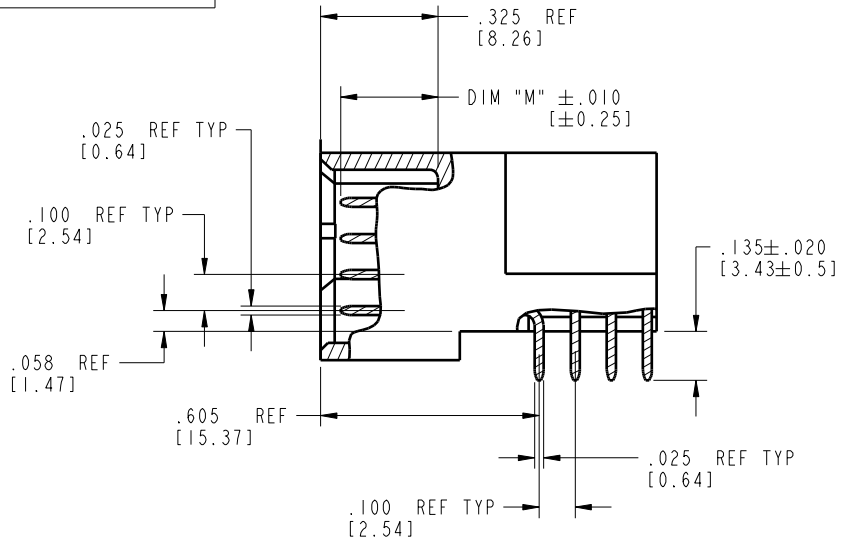
code code 22526

Pro/E

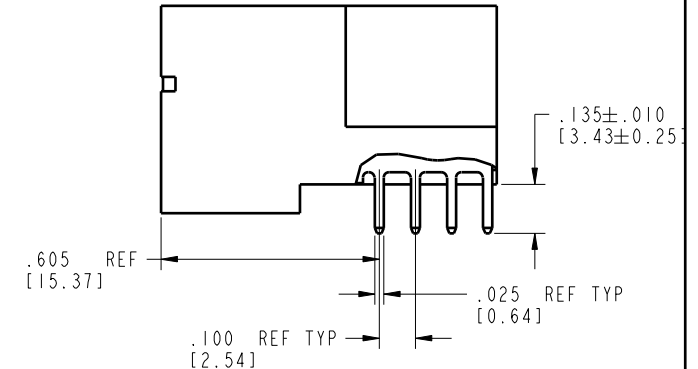
Tous droits strictement réservés. Reproduction ou communication à des tiers interdite sans quelque forme que ce soit sans autorisation écrite du propriétaire. Propriété de c FCI. Droits de reproduction FCI.

All rights strictly reserved. Reproduction or issue to third parties in any form whatsoever is not permitted without written authority from the proprietor. Property of FCI. Copyright FCI.

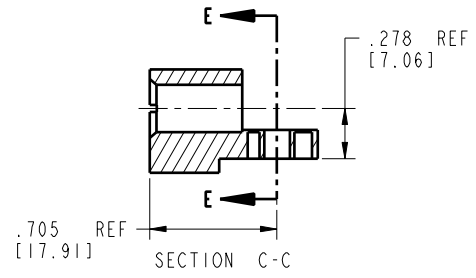
PRODUCT NUMBER
51939-178--
NOTE 3



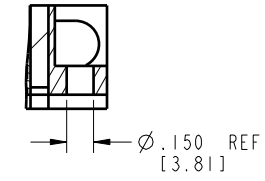
BROKEN-OUT SECTION A-A
SCALE 2:1



BROKEN-OUT SECTION B-B
SCALE 2:1



SECTION C-C



PARTIAL SECTION E-E

mat'l code SEE NOTE 2				tolerances unless otherwise specified		CUSTOMER		 www.fciconnect.com	
lir	ecn no.	dr	date	linear	.XX±.01/0.X±0.3	COPY			
B					.XXX±.005/0.XX±0.13	INCH/MM		title	
				angles	.XXX±.002/0.XXX±0.051	scale		RIGHT ANGLE SOLDER HEADER	
				dr	0°±2°	1:1		product family	
				eng	STEVEN WANG 04/20/05	A		PwrBlade	
				chr	STEVEN WANG 04/20/05	size		code	
				opod	VICTOR LIN 04/20/05	dwg no		213	
					JOSEPH HSIA 04/20/05	51939-178		sheet	
sheet index	revision sheet							2 of 4	

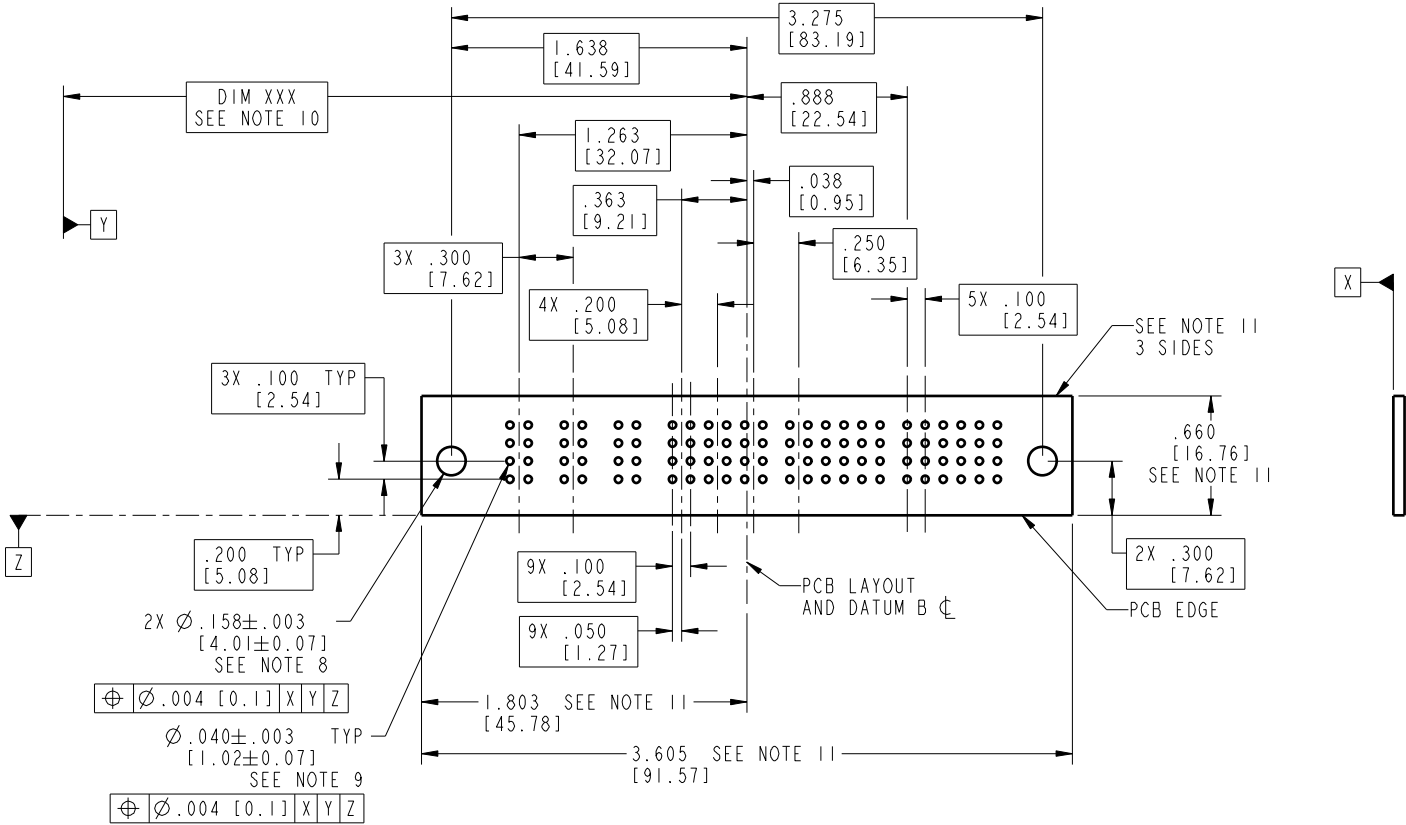
code code 22526

Pro/E

Tous droits strictement réservés. Reproduction ou communication o des liers interdite sous quelque forme que ce soit sans autorisation écrite du propriétaire. Propriété de c FCI. Droits de reproduction FCI.

All rights strictly reserved. Reproduction or issue to third parties in any form whatsoever is not permitted without written authority from the proprietor. Property of FCI. Copyright FCI.

PRODUCT NUMBER
51939-178--
NOTE 3



RECOMMENDED PCB LAYOUT

mat'l code SEE NOTE 2				tolerances unless otherwise specified		CUSTOMER		FCI www.fciconnect.com	
lir	ecn no.	dr	date	linear	.XX±.01/0.X±0.3	COPY		projection	title 9P + 24S
B					.XXX±.005/0.XX±0.13				RIGHT ANGLE SOLDER HEADER
				angles	.XXX±.002/0.XXX±0.051				product family PwrBlade
				dr	0°±2°	INCH/MM		size	code 213
				engr	STEVEN WANG 04/20/05	scale 1:1		dwg no	sheet 3 of 4
				chr	STEVEN WANG 04/20/05			size	
				appd	VICTOR LIN 04/20/05			A	
					JOSEPH HSIA 04/20/05			51939-178	
sheet index	revision	sheet							

code code 22526

Pro/E

Tous droits strictement réservés. Reproduction ou communication o des liers interdite sous quelque forme que ce soit sans autorisation écrite du propriétaire. Propriété de c FCI. Droits de reproduction FCI.



All rights strictly reserved. Reproduction or issue to third parties in any form whatsoever is not permitted without written authority from the proprietor. Property of FCI. Copyright FCI.

1 | 2

3 |

4

PRODUCT NUMBER

51939-178--
NOTE 3

NOTES:

1. DIMENSIONS AND TOLERANCES ARE IN ACCORDANCE WITH ASME Y14.5M, 1994 UNLESS OTHERWISE SPECIFIED.

CONNECTOR NOTES:

- 2. HOUSING MATERIAL: UL 94 V-0 GLASS FILLED
HIGH-TEMP THERMOPLASTIC
POWER CONTACT MATERIAL: COPPER ALLOY
SIGNAL PIN MATERIAL: COPPER ALLOY
 - 3. PLATING:
51939-178; 51939-178LF; 51939-178GLF SEE PRINT 10064183
 - 4. MANUFACTURER'S NAME, P/N, AND DATE CODE TO APPEAR ON THIS SURFACE.
 - 5. PRODUCT SPECIFICATION GS-12-149.
APPLICATION SPECIFICATION BUS-20-067.
 - 6. PACKAGED IN TRAYS.
- PCB NOTES:
- 7. ALL HOLE DIAMETERS ARE FINISHED HOLE SIZE.
 - 8. MOUNTING HOLES, WHERE APPLICABLE, ARE UNPLATED.
 - 9. $\varnothing .0453 \pm .0010$ [1.151 \pm 0.025] DRILLED HOLES PLATED WITH .0003 [0.008] MIN SnPb OVER .001 [0.03] TO .003 [0.08] Cu PLATING TO ACHIEVE $\varnothing .040 \pm .003$ [1.02 \pm .07] HOLE.
 - 10. "DIM XXX" TO BE DETERMINED BY THE CUSTOMER.
 - 11. CONNECTOR KEEP-OUT ZONE.

mat'l code		SEE NOTE 2		tolerances unless otherwise specified		CUSTOMER		A FCI		www.fciconnect.com	
lir	ecm no.	dr	date	linear	.XX±.01/0.X±0.3	COPY		projection	title 9P + 24S		
B					.XXX±.005/0.XX±0.13				RIGHT ANGLE SOLDER HEADER		
				angles	.XXX±.002/0.XXX±0.051				product family PwrBlade code 213		
				dr	0° ± 2°	INCH/MM		size	dwg no	sheet 4 of 4	
				eng	STEVEN WANG 04/20/05	scale 1:1		A	51939-178		
				chr	VICTOR LIN 04/20/05						
				appd	JOSEPH HSIA 04/20/05						
sheet index	revision sheet										

A

A

B

B

1 | 2

Pro/E

3 |

code code 22526

4