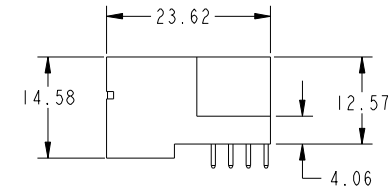
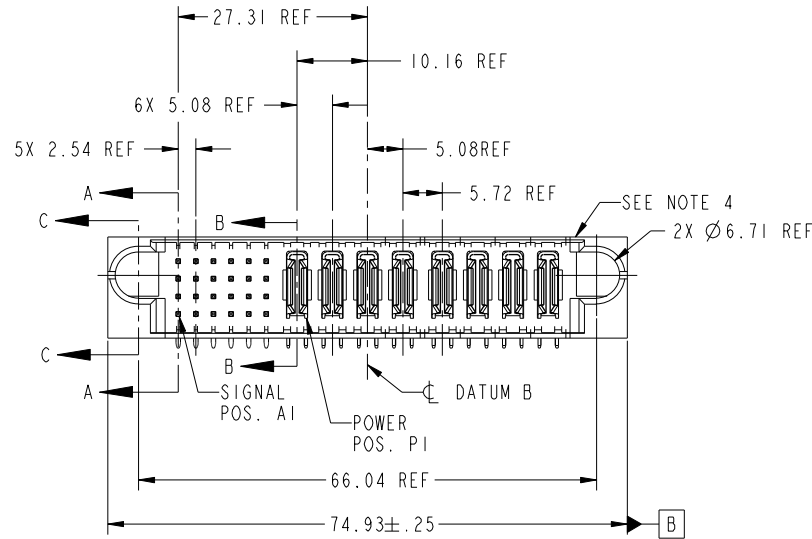


Tous droits strictement réservés. Reproduction ou communication a des tiers interdite sous quelque forme que ce soit sans autorisation écrite du propriétaire. Propriété de c FCI. Droits de reproduction FCI.



All rights strictly reserved. Reproduction or issue to third parties in any form whatever is not permitted without written authority from the proprietor. Property of FCI. Copyright FCI.

PRODUCT NO.	ROWS	SIGNAL						POWER								E2
		E1	1	2	3	4	5	6	P1	P2	P3	P4	P5	P6	P7	
51939-285... NOTE 3	D C B A	UUUUUU TTTTTT SSSSSS RRRRRR						PA PA PA PA PA PA PA PA								



CODE	DIM "M" MATING LENGTH	CONTACT TYPE
U	[6.86]	SIGNAL
T	[6.86]	SIGNAL
S	[6.86]	SIGNAL
R	[6.86]	SIGNAL
PA	[N/A]	POWER
F	[5.59]	SIGNAL

mat'l code				SEE NOTE	tolerances unless otherwise specified		CUSTOMER	FCI	
ltr	ecn no.	dr	date	linear	0.X ±0.3	projection	COPY		www.fciconnect.com
A	DG07-0120	JMG	03/29/07	angles	0.XX ±0.13			title	
				enr	0.XXX ±0.051			24S + 8P	
				chr	0° ±2°	RIGHT ANGLE SOLDER HEADER		product family	
				appd	JM GUO 03/29/07	PwrBlade		code	
					RYAN YUAN 03/29/07	size		213	
					GARY HSIEH 03/29/07	dwg no		1 of 4	
					JOSEPH HSIA 03/29/07	scale		sheet	
						1:1		1 of 4	
sheet index	revision sheet	A	A	A	A	A		cage code	
1	2	3	4			22526		4	

Pro/E

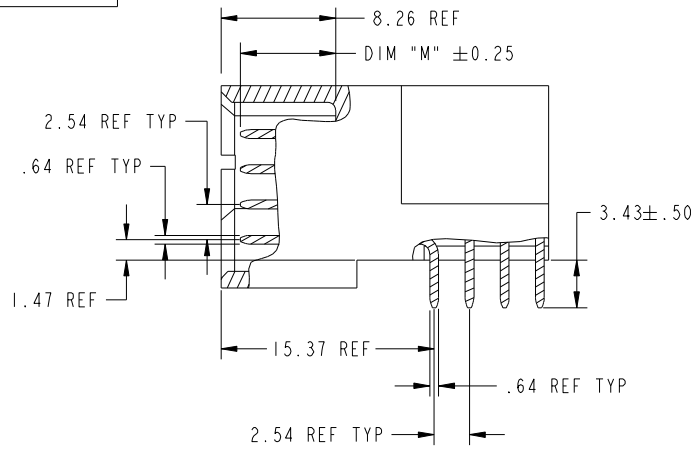
cage code 22526

Tous droits strictement reserves. Reproduction ou communication a des tiers interdite sous quelque forme que ce soit sans autorisation écrite du propriétaire. Propriete de c FCI. Droits de reproduction FCI.

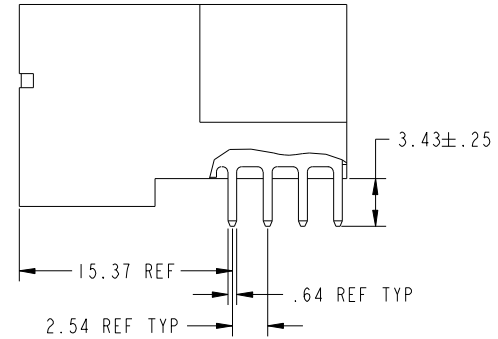
All rights strictly reserved. Reproduction or issue to third parties in any form whatever is not permitted without written authority from the proprietor. Property of FCI. Copyright FCI.



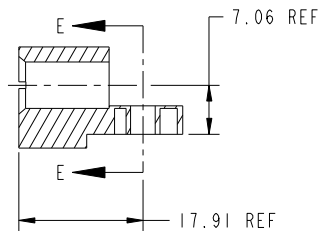
PRODUCT NUMBER
51939-285--
NOTE: 3



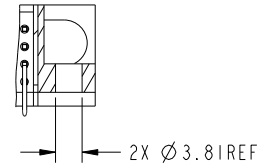
BROKEN-OUT SECTION A-A
SCALE 2:1



BROKEN-OUT SECTION B-B
SCALE 2:1



SECTION C-C



PARTIAL SECTION E-E

mat'l code		SEE NOTE		tolerances unless otherwise specified		CUSTOMER		FCI	
ltr	ecn no.	dr	date	linear	0.X ±0.3	COPY		www.fciconnect.com	
A				projection	0.XX ±0.13			title 24S + 8P RIGHT ANGLE SOLDER HEADER	
				angles	0.XXX ±0.051			product family PwrBlade code 213	
				dr	0° ±2°	scale 1:1		size dwg no 213	
				enr	JM GUO 03/29/07			sheet 2 of 4	
				chr	RYAN YUAN 03/29/07			51939-285	
				appd	GARY HSIEH 03/29/07				
					JOSEPH HSIA 03/29/07				
sheet index	revision sheet								

cage code 22526

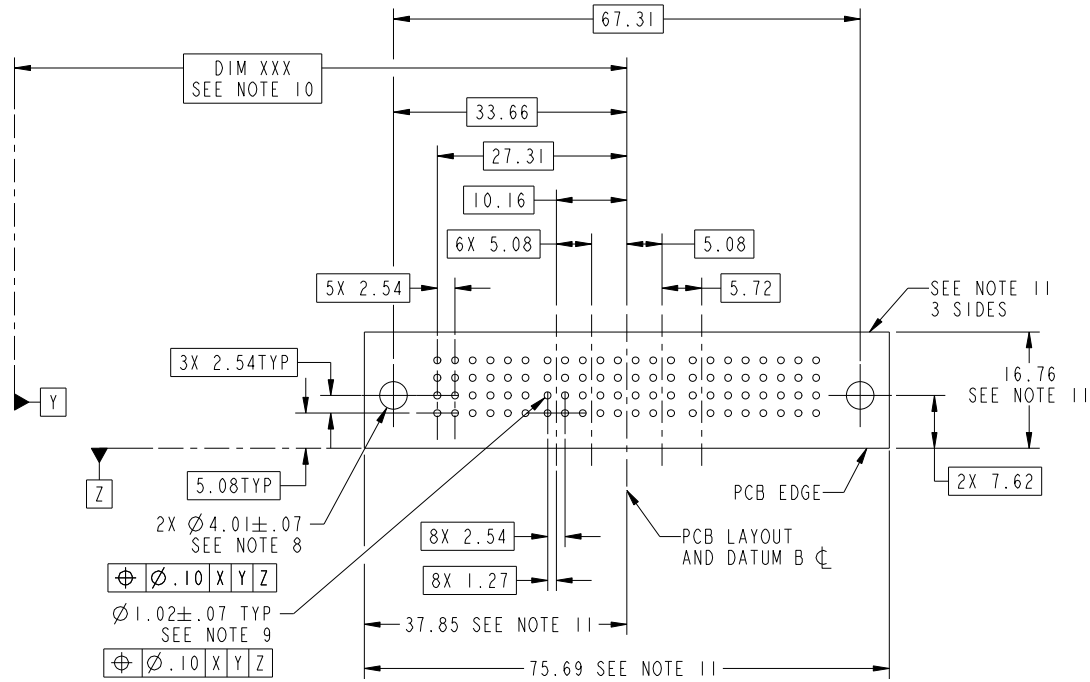
Pro/E

Tous droits strictement reserves. Reproduction ou communication a des tiers interdite sous quelque forme que ce soit sans autorisation écrite du propriétaire. Propriete de c FCI. Droits de reproduction FCI.



All rights strictly reserved. Reproduction or issue to third parties in any form whatever is not permitted without written authority from the proprietor. Property of FCI. Copyright FCI.

PRODUCT NUMBER
51939-285--
NOTE: 3



RECOMMENDED PCB LAYOUT

mat'l code		SEE NOTE		tolerances unless otherwise specified		CUSTOMER		 www.fciconnect.com	
ltr	ecn no.	dr	date	linear	0.X ± 0.3	COPY		title	
A					0.XX ± 0.13	projection		24S + 8P	
				angles	0.XXX ± 0.051			RIGHT ANGLE SOLDER HEADER	
				dr	0° ± 2°			product family PwrBlade code	
				engr	JM GUO 03/29/07			size 213	
				chr	RYAN YUAN 03/29/07	scale		dwg no 3 of 4	
				appd	GARY HSIEH 03/29/07	1:1		sheet	
					JOSEPH HSIA 03/29/07			3 of 4	
sheet index	revision sheet								

cage code 22526

Pro/E

Tous droits strictement reserves. Reproduction ou communication a des tiers interdite sous quelque forme que ce soit sans autorisation écrite du propriétaire. Propriete de c FCI. Droits de reproduction FCI.



All rights strictly reserved. Reproduction or issue to third parties in any form whatever is not permitted without written authority from the proprietor. Property of FCI. Copyright FCI.

PRODUCT NUMBER
51939-285--
NOTE: 3

NOTES:

1. DIMENSIONS AND TOLERANCES ARE IN ACCORDANCE WITH ASME Y14.5M, 1994 UNLESS OTHERWISE SPECIFIED.

CONNECTOR NOTES:

- 2. HOUSING MATERIAL: UL 94 V-0 GLASS FILLED HIGH-TEMP THERMOPLASTIC
POWER CONTACT MATERIAL: COPPER ALLOY
SIGNAL PIN MATERIAL: COPPER ALLOY
- 3. 51939-285; 51939-285LF PLATING SPEC. SEE PRINT:10064183
- 4. MANUFACTURER'S NAME, P/N, AND DATE CODE TO APPEAR ON THIS SURFACE.
- 5. PRODUCT SPECIFICATION GS-12-149.
APPLICATION SPECIFICATION BUS-20-067.
- 6. PACKAGED IN TRAYS.

PCB NOTES:

- 7. ALL HOLE DIAMETERS ARE FINISHED HOLE SIZE.
- 8. MOUNTING HOLES, WHERE APPLICABLE, ARE UNPLATED.
- 9. $\varnothing 1.151 \pm 0.025$ DRILLED HOLES PLATED WITH 0.008 MIN SnPb OR Sn OVER 0.03 TO 0.08 Cu PLATING TO ACHIEVE $\varnothing 1.02 \pm .07$ HOLE.
- 10. "DIM XXX" TO BE DETERMINED BY THE CUSTOMER.
- 11. CONNECTOR KEEP-OUT ZONE.

mat'l code				SEE NOTE	tolerances unless otherwise specified		CUSTOMER		FCI		www.fciconnect.com	
ltr	ecn no.	dr	date	linear	0.X ± 0.3		COPY		projection	title		
A					0.XX ± 0.13		MIM			24S + 8P		
					0.XXX ± 0.051		←			RIGHT ANGLE SOLDER HEADER		
				angles	0° ± 2°		MIM		product family		PwrBlade	code
				dr	JM GUO	03/29/07	←		size	dwg no		213
				engr	RYAN YUAN	03/29/07	←		A	51939-285		sheet
				chr	GARY HSIEH	03/29/07	←		scale	1:1		4 of 4
				appd	JOSEPH HSIA	03/29/07	←					
sheet index	revision sheet											

cage code 22526

Pro/E