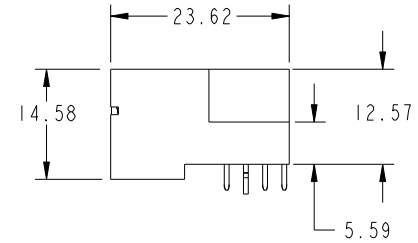
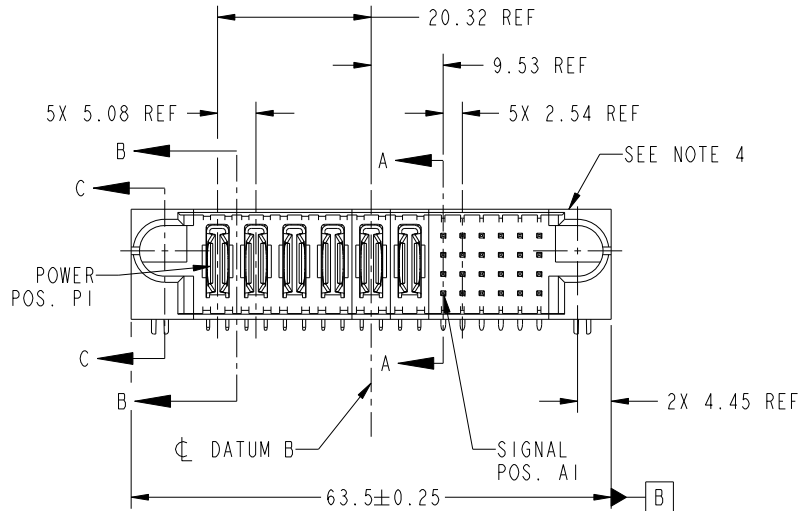
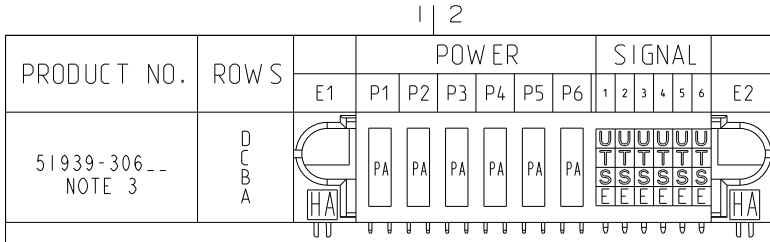


Tous droits strictement réservés. Reproduction ou communication a des tiers interdite sous quelque forme que ce soit sans autorisation écrite du propriétaire. Propriété de c.FCI. Droits de reproduction FCI.

All rights strictly reserved. Reproduction or issue to third parties in any form whatever is not permitted without written authority from the proprietor. Property of FCI. Copyright FCI.



CODE	DIM "M" MATING LENGTH	CONTACT TYPE
U	[6.86]	SIGNAL
T	[6.86]	SIGNAL
S	[6.86]	SIGNAL
PA	[N/A]	POWER
HA	[N/A]	HOLD-DOWN
E	[5.59]	SIGNAL

mat'l code				SEE NOTE		tolerances unless otherwise specified		CUSTOMER		FCI	
ltr	ecn no.	dr	date	linear	0.X ±0.3	COPY		www.fciconnect.com		title	
A	DG07-0289	JC	07/17/07	0.XX ±0.13	projection		6P + 24S		RIGHT ANGLE SOLDER HEADER		
B	DG08-0266	WD	09/22/08	0.XXX ±0.051	angles	0° ±2°	product family		PwrBlade		
				dr	Jerome Chen	07/11/07	size		dwg no		
				enrg	Jerome Chen	07/17/07	A		51939-306		
				chr	Gary Hsieh	07/11/07	scale		1:1		
				appd	Joseph Hsiao	07/11/07	sheet index		1 of 4		
sheet index	revision sheet	B 1	B 2	B 3	B 4						

A

A

B

B

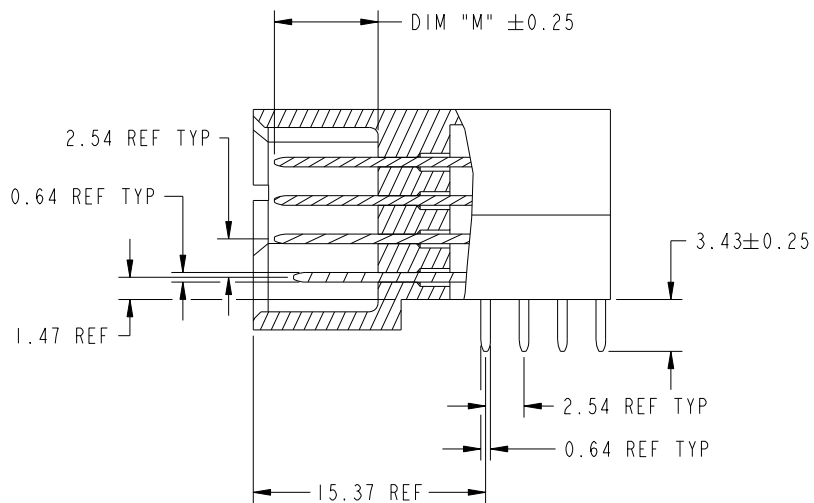
Tous droits strictement reserves. Reproduction ou communication a des tiers interdite sous quelque forme que ce soit sans autorisation ecrite du proprietaire. Propriete de c.FCI. Droits de reproduction FCI.

All rights strictly reserved. Reproduction or issue to third parties in any form whatever is not permitted without written authority from the proprietor. Property of FCI. Copyright FCI.

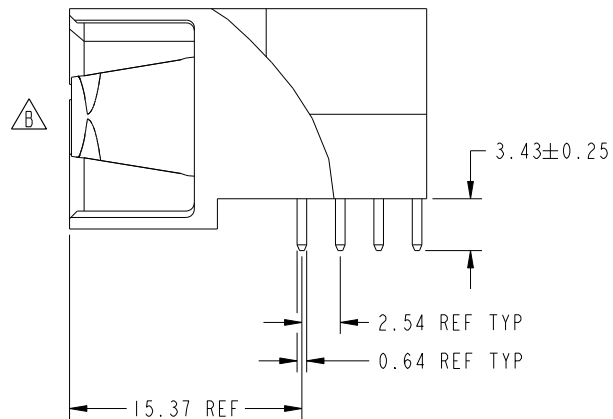


PRODUCT NUMBER

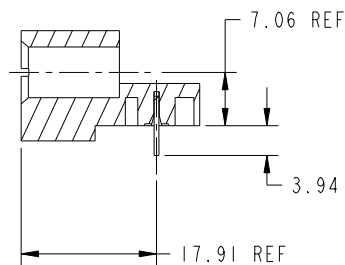
51939-306__
NOTE: 3



SECTION A-A
SCALE 2:1



SECTION B-B
SCALE 2:1



SECTION C-C

mat'l code		SEE NOTE		tolerances unless otherwise specified		CUSTOMER		 www.fciconnect.com	
ltr	ecn no.	dr	date	linear	0.X ±0.3	COPY		title	
B					0.XX ±0.13	projection		6P + 24S	
				angles	0.XXX ±0.051			RIGHT ANGLE SOLDER HEADER	
					0° ±2°			product family	
				dr	Jerome Chen 07/11/07	MM		PwrBlade	
				enr	Jerome Chen 07/17/07			code	
				chr	Gary Hsieh 07/11/07	1:1		213	
				appd	Joseph Hsia 07/11/07	A		sheet	
sheet index		revision sheet				A		51939-306	
								2 of 4	

cage code 2856

Pro/E

PDM: Rev:B

STATUS: **Released**

Printed: Dec 20, 2010

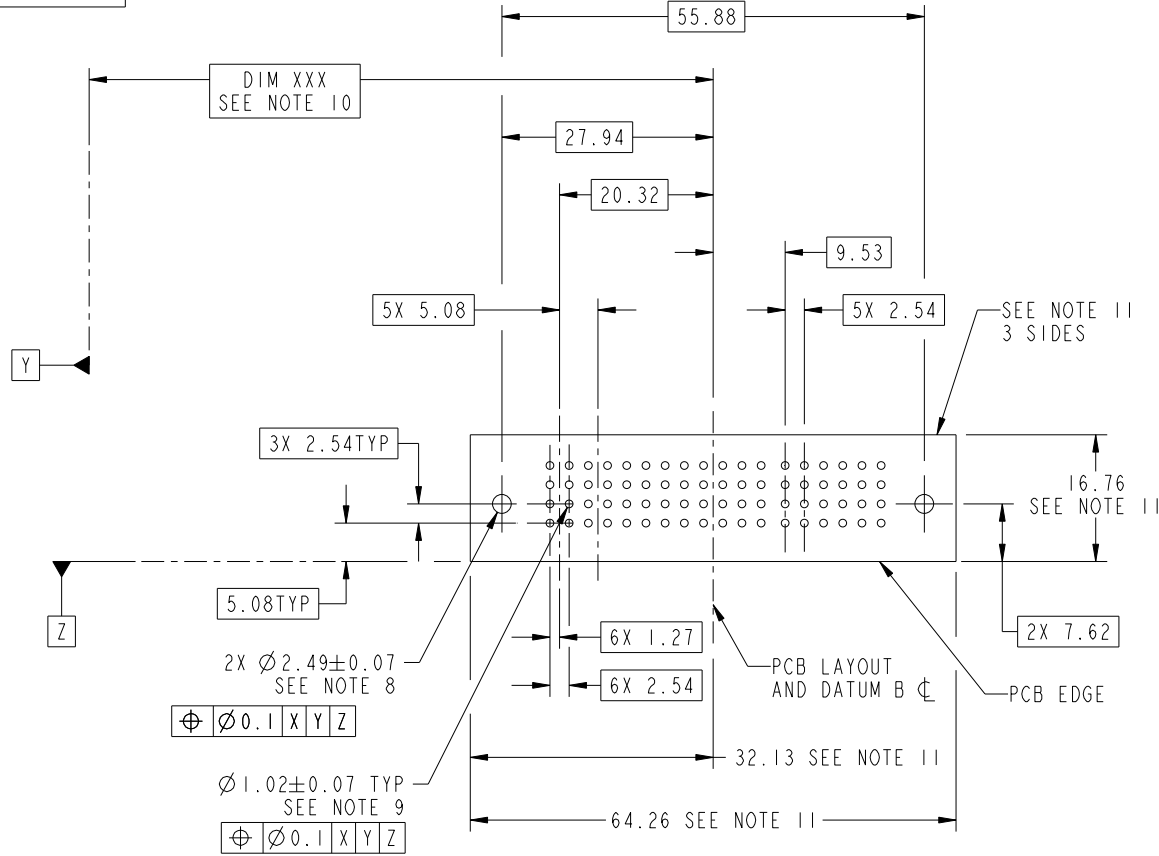
Tous droits strictement réservés. Reproduction ou communication a des tiers interdite sous quelque forme que ce soit sans autorisation écrite du propriétaire. Propriété de c.FCI. Droits de reproduction FCI.

All rights strictly reserved. Reproduction or issue to third parties in any form whatever is not permitted without written authority from the proprietor. Property of FCI. Copyright FCI.



PRODUCT NUMBER

51939-306__
NOTE: 3



RECOMMENDED PCB LAYOUT

mat'l code		SEE NOTE		tolerances unless otherwise specified		CUSTOMER		 www.fciconnect.com	
ltr	ecn no.	dr	date	linear	0.X ±0.3	COPY		title	
B					0.XX ±0.13	projection		6P + 24S	
				angles	0.XXX ±0.051			RIGHT ANGLE SOLDER HEADER	
				dr	0° ±2°			product family	
				enrg	Jerome Chen 07/11/07	MM		PwrBlade	
				chr	Jerome Chen 07/17/07			code	
				appd	Gary Hsieh 07/11/07	scale		size	
					Joseph Hsia 07/11/07	1:1		dwg no	
sheet index	revision sheet							A 51939-306	
								213	
								3 of 4	

cage code 2856

Tous droits strictement réservés. Reproduction ou communication a des tiers interdite sous quelque forme que ce soit sans autorisation écrite du propriétaire. Propriété de c.FCI. Droits de reproduction FCI.

All rights strictly reserved. Reproduction or issue to third parties in any form whatever is not permitted without written authority from the proprietor. Property of FCI. Copyright FCI.



1 | 2

3

4

PRODUCT NUMBER

51939-306__
NOTE: 3

NOTES:

1. DIMENSIONS AND TOLERANCES ARE IN ACCORDANCE WITH ASME Y14.5M, 1994 UNLESS OTHERWISE SPECIFIED.

CONNECTOR NOTES:

2. HOUSING MATERIAL: UL 94 V-0 GLASS FILLED HIGH-TEMP THERMOPLASTIC

POWER CONTACT MATERIAL: COPPER ALLOY
SIGNAL PIN MATERIAL: COPPER ALLOY

3. SEE ITEM 1 & 2 IN PRINT 10064183 FOR PLATING SPEC OF 51939-306 AND 51939-306LF RESPECTIVELY.

4. MANUFACTURER'S NAME, P/N, AND DATE CODE TO APPEAR ON THIS SURFACE.

5. PRODUCT SPECIFICATION GS-12-149.
APPLICATION SPECIFICATION BUS-20-067.

6. PACKAGED IN TRAYS.

PCB NOTES:

7. ALL HOLE DIAMETERS ARE FINISHED HOLE SIZE.

8. MOUNTING HOLES, WHERE APPLICABLE, ARE UNPLATED.

9. $\varnothing 1.151 \pm 0.025$ DRILLED HOLES PLATED WITH
0.008 MIN SnPb OR Sn OVER 0.03 TO 0.08 Cu PLATING TO ACHIEVE $\varnothing 1.02 \pm .07$ HOLE.

10. "DIM XXX" TO BE DETERMINED BY THE CUSTOMER.

11. CONNECTOR KEEP-OUT ZONE.

12. A $\triangle B$ SYMBOL WILL BE NEXT TO ANY DIMENSION, VIEW, OR NOTE WHICH HAS BEEN MODIFIED WITH THE CURRENT DRAWING REVISION.

mat'l code		SEE NOTE		tolerances unless otherwise specified		CUSTOMER		FCI	
ltr	ecn no.	dr	date	linear	0.X ± 0.3	COPY		www.fciconnect.com	
B					0.XX ± 0.13	projection		title	
				angles	0.XXX ± 0.051			6P + 24S	
				dr	0° $\pm 2°$	MM		RIGHT ANGLE SOLDER HEADER	
				enr	Jerome Chen 07/11/07	scale		product family PwrBlade	
				chr	Jerome Chen 07/11/07	1:1		code	
				appd	Gary Hsieh 07/11/07	A		size dwg no	
					Joseph Hsia 07/11/07	51939-306		213	
sheet index	revision sheet							sheet 4 of 4	

1 | 2

Pro/E

PDM: Rev: B

STAT: Released

Printed: Dec 20, 2010