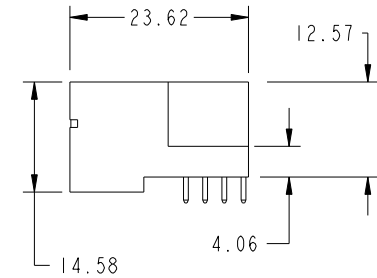
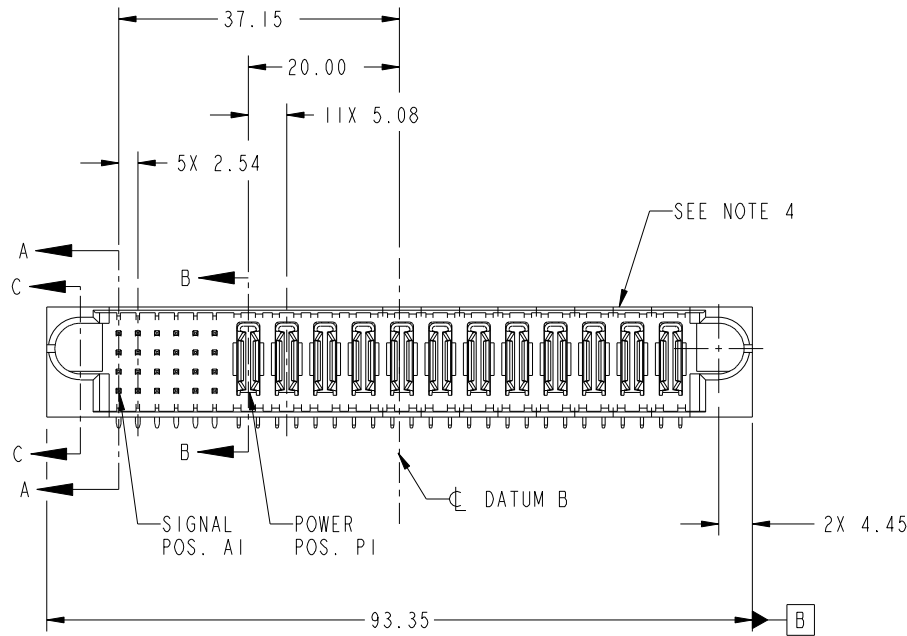


Tous droits strictement réservés. Reproduction ou communication a des tiers interdite sous quelque forme que ce soit sans autorisation écrite du propriétaire. Propriété de c.FCI. Droits de reproduction FCI.

All rights strictly reserved. Reproduction or issue to third parties in any form whatever is not permitted without written authority from the proprietor. Property of FCI. Copyright FCI.



PRODUCT NO. 51939-375-- NOTE 3	ROWS D C B A	SIGNAL						POWER						E2							
		E1	1	2	3	4	5	6	P1	P2	P3	P4	P5		P6	P7	P8	P9	P10	P11	P12
		UUUUUU	TTTTTTTT	SSSSSS	RRRRRR			PA	PA	PA	PA	PA	PA	PA	PA	PA	PA	PA	PA	PA	



CODE	DIM "M" MATING LENGTH	CONTACT TYPE
U	[6.86]	SIGNAL
T	[6.86]	SIGNAL
S	[6.86]	SIGNAL
R	[6.86]	SIGNAL
PA	[N/A]	POWER
F	[5.59]	SIGNAL

mat'l code				SEE NOTE		tolerances unless otherwise specified		CUSTOMER	
lir	ecn no.	dr	date	linear	0.X ±0.5	COPY			
A	DG08-0203	W D	08/04/08	angles	0.XX ±0.25	projection			
					0.XXX ±0.1				
				dr	Warren Du	07/28/08			
				enr	Jerome Chen	07/28/08	MM		
				chr	Gary Hsieh	07/28/08	scale		
				appd	Joseph Hsia	07/28/08	1:1		
sheet index	revision sheet	A 1	A 2	A 3	A 4				

		www.fciconnect.com	
title		24S + 12P	
RIGHT ANGLE SOLDER HEADER			
product family	PwrBlade	code	213
size	dwg no	sheet	1 of 4
A	51939-375		

A

A

B

B

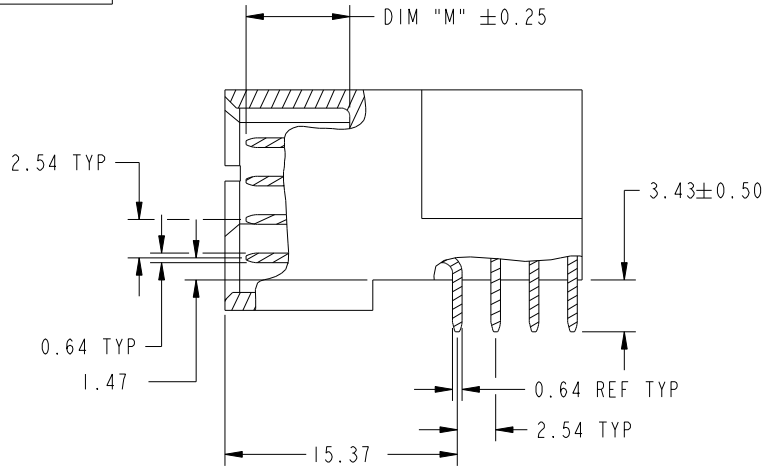
Tous droits strictement reserves. Reproduction ou communication a des tiers interdite sous quelque forme que ce soit sans autorisation ecrite du proprietaire. Propriete de c FCI. Droits de reproduction FCI.

All rights strictly reserved. Reproduction or issue to third parties in any form whatever is not permitted without written authority from the proprietor. Property of FCI. Copyright FCI.

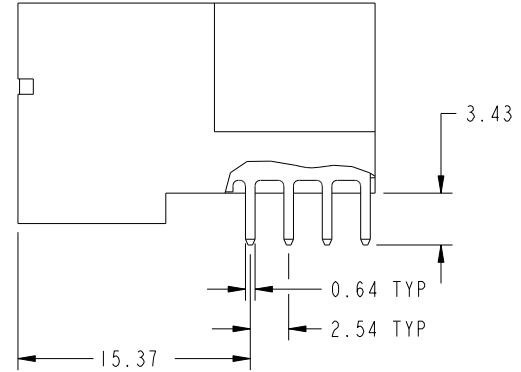


PRODUCT NUMBER

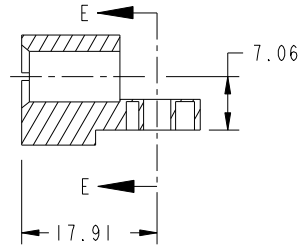
51939-375\_\_  
NOTE: 3



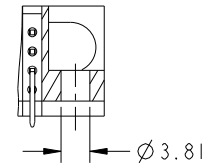
BROKEN-OUT SECTION A-A  
SCALE 2:1



BROKEN-OUT SECTION B-B  
SCALE 2:1



SECTION C-C



PARTIAL SECTION E-E

mat'l code				SEE NOTE		tolerances unless otherwise specified		CUSTOMER		 www.fciconnect.com	
lir	ecn no.	dr	date	linear	0.X ±0.5		COPY		title		
A					0.XX ±0.25		projection		24S + 12P		
					0.XXX ±0.1				RIGHT ANGLE SOLDER HEADER		
				angles	0° ±2°		 MM		product family		
				dr	Warren Du	07/28/08	scale		PwrBlade		
				enr	Jerome Chen	07/28/08	1:1		code		
				chr	Gary Hsieh	07/28/08			213		
				appd	Joseph Hsia	07/28/08			sheet		
sheet index		revision sheet						A		2 of 4	
								A		51939-375	

cage code 28506

Pro/E

PDM: Rev: A

STATUS: Released

Printed: Dec 20, 2010

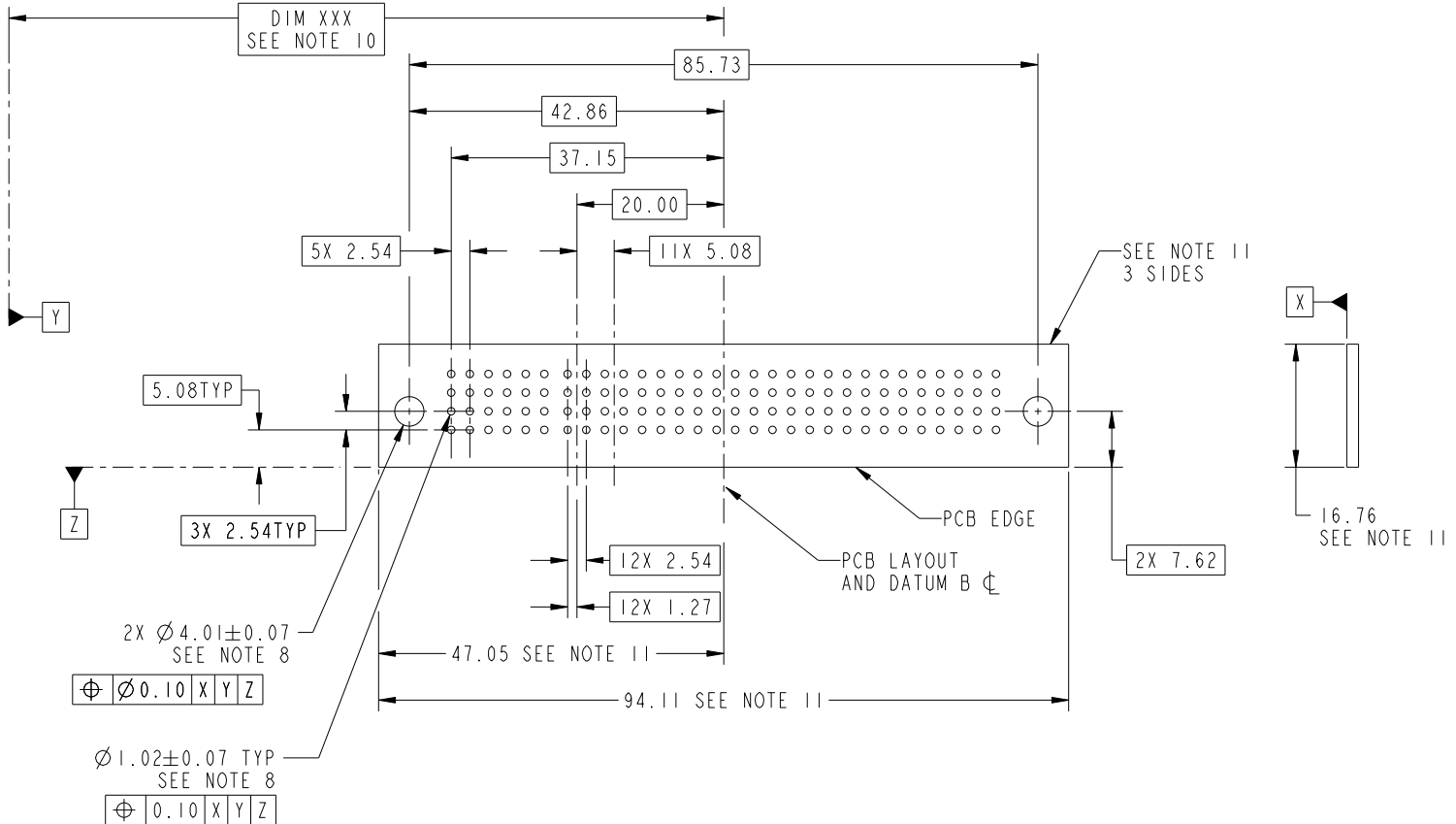
Tous droits strictement reserves. Reproduction ou communication a des tiers interdite sous quelque forme que ce soit sans autorisation ecrite du proprietaire. Propriete de c FCI. Droits de reproduction FCI.

All rights strictly reserved. Reproduction or issue to third parties in any form whatever is not permitted without written authority from the proprietor. Property of FCI. Copyright FCI.



PRODUCT NUMBER

51939-375\_\_  
NOTE: 3



RECOMMENDED PCB LAYOUT

mat'l code		SEE NOTE		tolerances unless otherwise specified		CUSTOMER		 www.fciconnect.com	
ltr	ecn no.	dr	date	linear	0.X ± 0.5	COPY		title	
A				linear	0.XX ± 0.25	projection		24S + 12P	
				angles	0.XXX ± 0.1			RIGHT ANGLE SOLDER HEADER	
					0° ± 2°			product family	
				dr	Warren Du 07/28/08	MM		PwrBlade	
				enrg	Jerome Chen 07/28/08	scale		code	
				chr	Gary Hsieh 07/28/08	1:1		213	
				appd	Joseph Hsia 07/28/08	A		51939-375	
sheet index	revision sheet							sheet 3 of 4	

cage code 2856

Tous droits strictement reserves. Reproduction ou communication a des tiers interdite sous quelque forme que ce soit sans autorisation ecrite du proprietaire. Propriete de c FCI. Droits de reproduction FCI.

All rights strictly reserved. Reproduction or issue to third parties in any form whatever is not permitted without written authority from the proprietor. Property of FCI. Copyright FCI.



1 | 2

3

4

PRODUCT NUMBER

51939-375\_\_  
NOTE: 3

NOTES:

1. DIMENSIONS AND TOLERANCES ARE IN ACCORDANCE WITH ASME Y14.5M, 1994 UNLESS OTHERWISE SPECIFIED.

CONNECTOR NOTES:

- 2. HOUSING MATERIAL: UL 94 V-0 GLASS FILLED HIGH-TEMP THERMOPLASTIC  
POWER CONTACT MATERIAL: COPPER ALLOY  
SIGNAL PIN MATERIAL: COPPER ALLOY
  - 3. 51939-375; 51939-375LF PLATING SPEC. SEE PRINT:10064183
  - 4. MANUFACTURER'S NAME, P/N, AND DATE CODE TO APPEAR ON THIS SURFACE.
  - 5. PRODUCT SPECIFICATION GS-12-149.  
APPLICATION SPECIFICATION BUS-20-067.
  - 6. PACKAGED IN TRAYS.
- PCB NOTES:
- 7. ALL HOLE DIAMETERS ARE FINISHED HOLE SIZE.
  - 8. MOUNTING HOLES, WHERE APPLICABLE, ARE UNPLATED.
  - 9.  $\varnothing 1.151 \pm 0.025$  DRILLED HOLES PLATED WITH  
0.008 MIN SnPb OR Sn OVER 0.03  
TO 0.08 Cu PLATING TO ACHIEVE  
 $\varnothing 1.02 \pm .07$  HOLE.
  - 10. "DIM XXX" TO BE DETERMINED BY THE CUSTOMER.
  - 11. CONNECTOR KEEP-OUT ZONE.

A

A

B

B

mat'l code		SEE NOTE		tolerances unless otherwise specified		CUSTOMER		 www.fciconnect.com	
ltr	ecn no.	dr	date	linear	0.X ± 0.5		COPY		title 24S + 12P RIGHT ANGLE SOLDER HEADER
A					0.XX ± 0.25		projection		
					0.XXX ± 0.1				
				angles	0° ± 2°				product family PwrBlade code 213 sheet 4 of 4
				dr	Warren Du	07/28/08			
				engr	Jerome Chen	07/28/08	size A		
				chr	Gary Hsieh	07/28/08	dwg no 51939-375		
				appd	Joseph Hsia	07/28/08	scale 1:1		
sheet index	revision sheet								

1 | 2

Pro/E

PDM: Rev: A

STAT: Released

Printed: Dec 20, 2010

cage code 2856

4