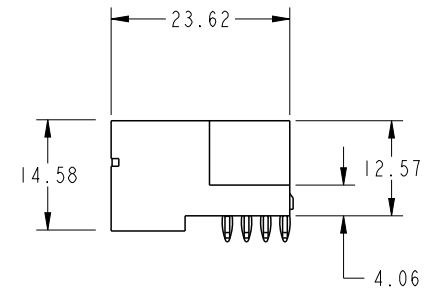
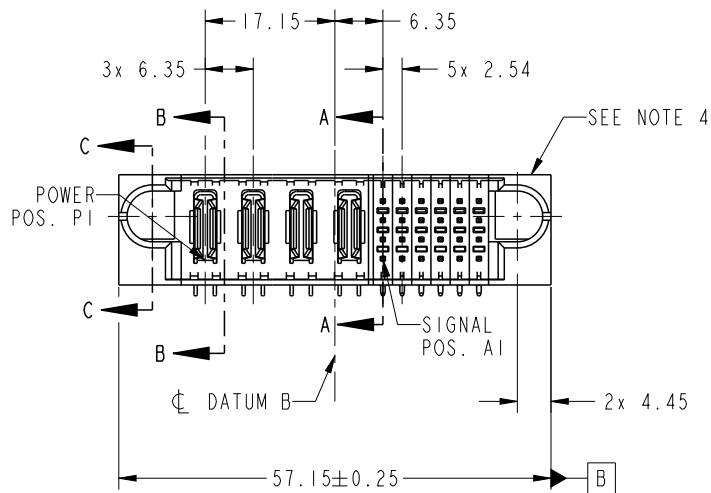


PRODUCT NO.	ROWS	POWER				SIGNAL										
		E1	P1	P2	P3	P4	1	2	3	4	5	6	E2			
51939-975NSP-- NOTE 3	D C B A		PX	PX	PX	PX	L	D	D	S	D	S	D	S	D	L
			S	C	L	C	L	C	L	C	S	C	L	C	S	C
			S	B	L	B	L	B	L	B	S	B	L	B	S	B
			S	A	L	A	L	A	L	A	S	A	L	A	S	A

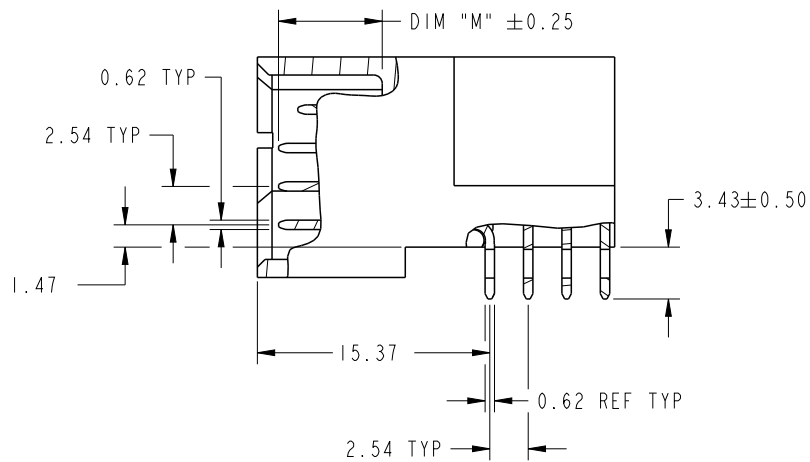


CODE	DIM "M" MATING LENGTH	CONTACT TYPE
SA	[6.86]	SIGNAL
SB	[6.86]	SIGNAL
SC	[6.86]	SIGNAL
LD	[5.59]	SIGNAL
LC	[5.59]	SIGNAL
LB	[5.59]	SIGNAL
LA	[5.59]	SIGNAL
SD	[6.86]	SIGNAL
PX	[N/A]	POWER

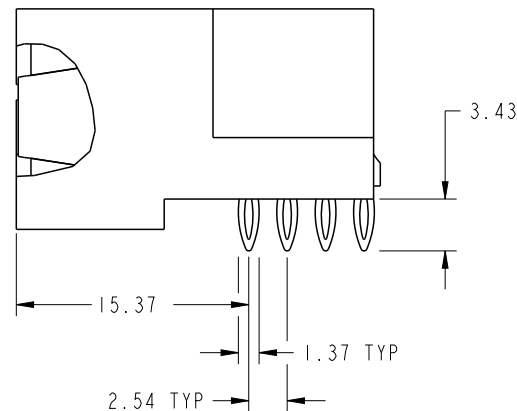
spec ref	*	dr	De-Ming Lu	2015/06/01	projection	MM	size	A4	scale	1:1
tolerance std	TOLERANCES UNLESS OTHERWISE SPECIFIED	eng	De-Ming Lu	2015/07/16			ecn no	-	rel level	Released
ASME Y14.5		chr	Fancy Zhang	2015/07/16						
		appr	Pei-Ming Zheng	2015/07/16		product family				
surface	✓	linear	0.X	±0.5		title	dwg no	51939-975NSP	rev	A
			0.XX	±0.25						
			0.XXX	±0.1						
ASME Y14.5	angular	0°	±2°	www.fci.com	cat. no.	-	Product - Customer Drw	sheet 1 of 4		

PRODUCT NUMBER

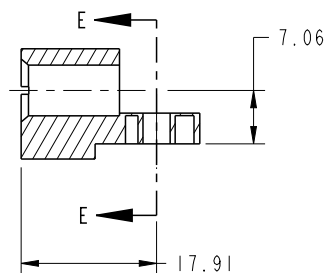
51939-975NSP\_\_  
NOTE: 3



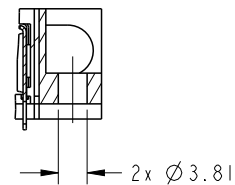
BROKEN-OUT SECTION A-A  
SCALE 2:1



BROKEN-OUT SECTION B-B  
SCALE 2:1



SECTION C-C



PARTIAL SECTION E-E

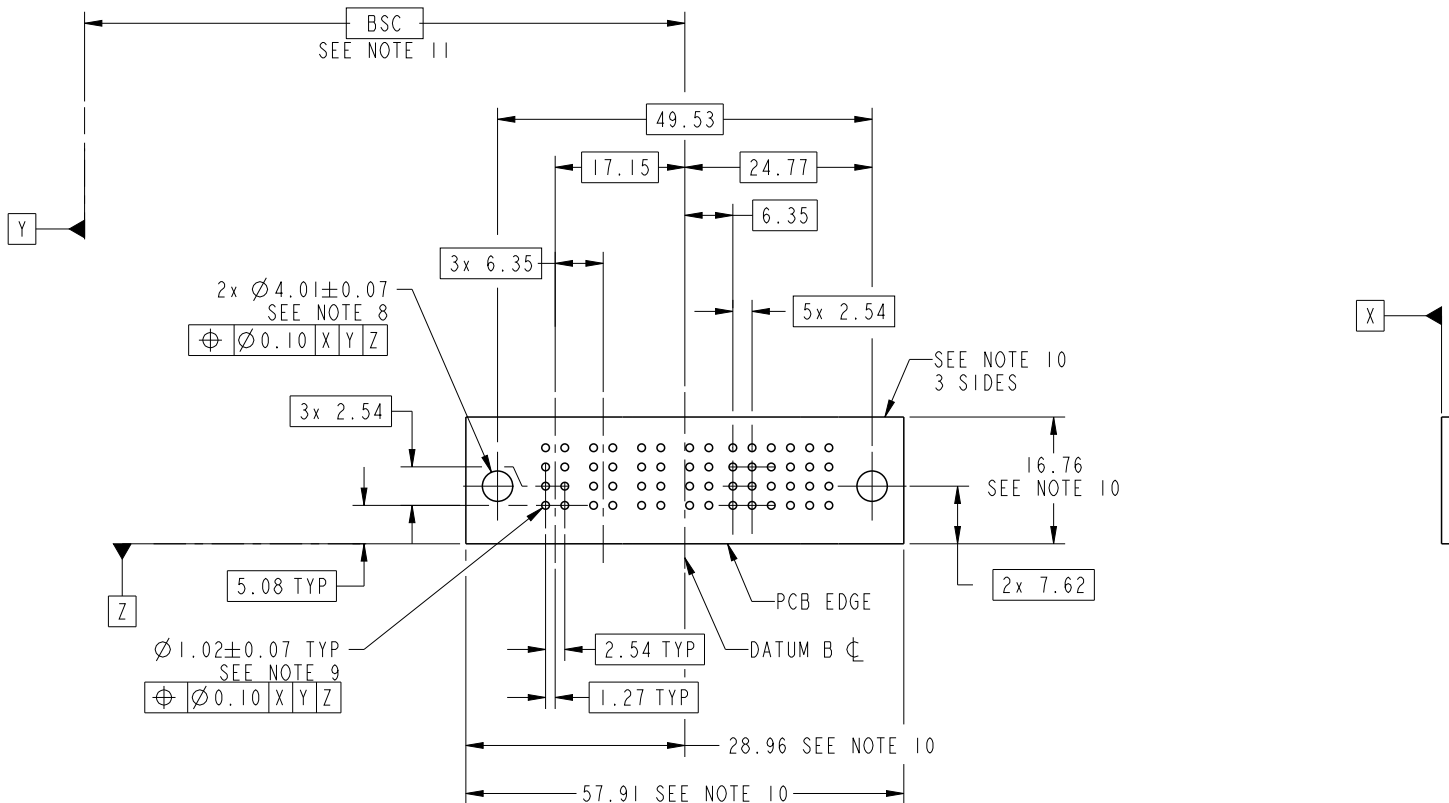
dr	De-Ming Lu	2015/06/01	projection 	MM 	size	A4	scale	1:1
eng	De-Ming Lu	2015/07/16			ecn no	-		
chr	Fancy Zhang	2015/07/16			rel level	Released		
appr	Pei-Ming Zheng	2015/07/16	product family	PwrBlade	rev	A		
		title 4P + 24S RIGHT ANGLE PRESS-FIT HEADER	dwg no 51939-975NSP	cat. no. -	Product - Customer Drw	sheet 2 of 4		



Copyright FCI.

PRODUCT NUMBER

51939-975NSP\_\_  
NOTE: 3



RECOMMENDED PCB LAYOUT

dr	De-Ming Lu	2015/06/01	projection 	MM 	size	A4	scale	1:1
eng	De-Ming Lu	2015/07/16			ecn no	-		
chr	Fancy Zhang	2015/07/16			rel level	Released		
appr	Pei-Ming Zheng	2015/07/16	product family	PwrBlade	rev	A		
		title 4P + 24S RIGHT ANGLE PRESS-FIT HEADER	dwg no 51939-975NSP	www.fci.com	cat. no.	Product - Customer Drw	sheet 3 of 4	

PRODUCT NUMBER

51939-975NSP--  
NOTE: 3

NOTES:

1. DIMENSIONS AND TOLERANCES ARE IN ACCORDANCE WITH ASME Y14.5M, 1994 UNLESS OTHERWISE SPECIFIED.

CONNECTOR NOTES:

- 2. HOUSING MATERIAL: UL 94 V-0 GLASS FILLED HIGH-TEMP THERMOPLASTIC  
POWER CONTACT MATERIAL: COPPER ALLOY  
SIGNAL PIN MATERIAL: COPPER ALLOY
- 3. SEE ITEM 3 & 4 IN PRINT 10064183 FOR PLATING SPEC OF 51939-975NSP AND 51939-975NSPLF RESPECTIVELY.
- 4. MANUFACTURER'S NAME, DATE CODE AND OPTIONAL P/N TO APPEAR ON THIS SURFACE. THE MARK CAN BE OMITTED IF THERE IS NOT ENOUGH SPACE ON THIS SURFACE.
- 5. PRODUCT SPECIFICATION GS-12-149.  
APPLICATION SPECIFICATION BUS-20-067.
- 6. PACKAGED IN TRAYS.

PCB NOTES:

- 7. ALL HOLE DIAMETERS ARE FINISHED HOLE SIZE.
- 8. MOUNTING HOLES, WHERE APPLICABLE, ARE UNPLATED.
- 9.  $\varnothing 1.151 \pm 0.025$  DRILLED HOLES PLATED WITH  
0.008 MIN SnPb OR Sn OVER 0.03  
TO 0.08 Cu PLATING TO ACHIEVE  
 $\varnothing 1.02 \pm 0.07$  HOLE.
- 10. CONNECTOR KEEP-OUT ZONE.
- 11. DATUM AND BASIC DIMENSIONS ARE ESTABLISHED BY CUSTOMER.

dr	De-Ming Lu	2015/06/01	projection 	MM 	size	A4	scale	1:1
eng	De-Ming Lu	2015/07/16			ecn no	-		
chr	Fancy Zhang	2015/07/16			product family	PwrBlade	rel level	Released
appr	Pei-Ming Zheng	2015/07/16			rev	A		
		title	4P + 24S RIGHT ANGLE PRESS-FIT HEADER		dwg no	51939-975NSP		
www.fci.com		cat. no.	-		Product - Customer Drw		sheet 4 of 4	



Copyright FCI.