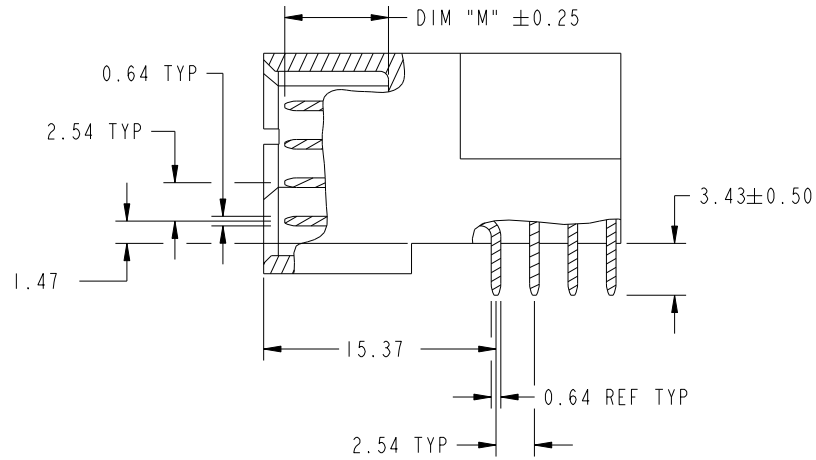


CODE	DIM "M" MATING LENGTH	CONTACT TYPE
E	[5.59]	SIGNAL
F	[5.59]	SIGNAL
G	[5.59]	SIGNAL
H	[5.59]	SIGNAL
U	[6.86]	SIGNAL
R	[6.86]	SIGNAL
HA	[N/A]	HOLD-DOWN

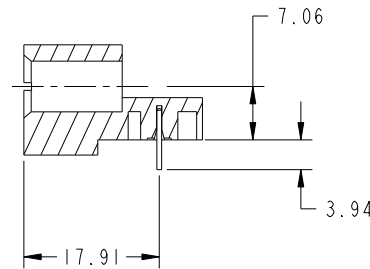
spec ref	*	dr	Ruan MT	2015/12/21	projection 	MM ←→	size	A4	scale	1:1		
tolerance std	ASME Y14.5	eng	Ruan MT	2016/01/07			product family	PwrBlade	ecn no	-	rel level	Released
TOLERANCES UNLESS OTHERWISE SPECIFIED		chr	Fancy Zhang	2016/01/06								
surface	✓	appr	Pei-Ming Zheng	2016/01/07								
ASME Y14.5	linear	0.X	±0.5	 www.fci.com	title 88S RIGHT ANGLE STB HEADER	dwg no 51939-997	rev A					
		0.XX	±0.25									
		0.XXX	±0.1									
	angular	0°	±2°	cat. no.	-	Product - Customer Drw		sheet 1 of 4				

PRODUCT NUMBER

51939-997LF



BROKEN-OUT SECTION A-A
SCALE 2:1



SECTION C-C

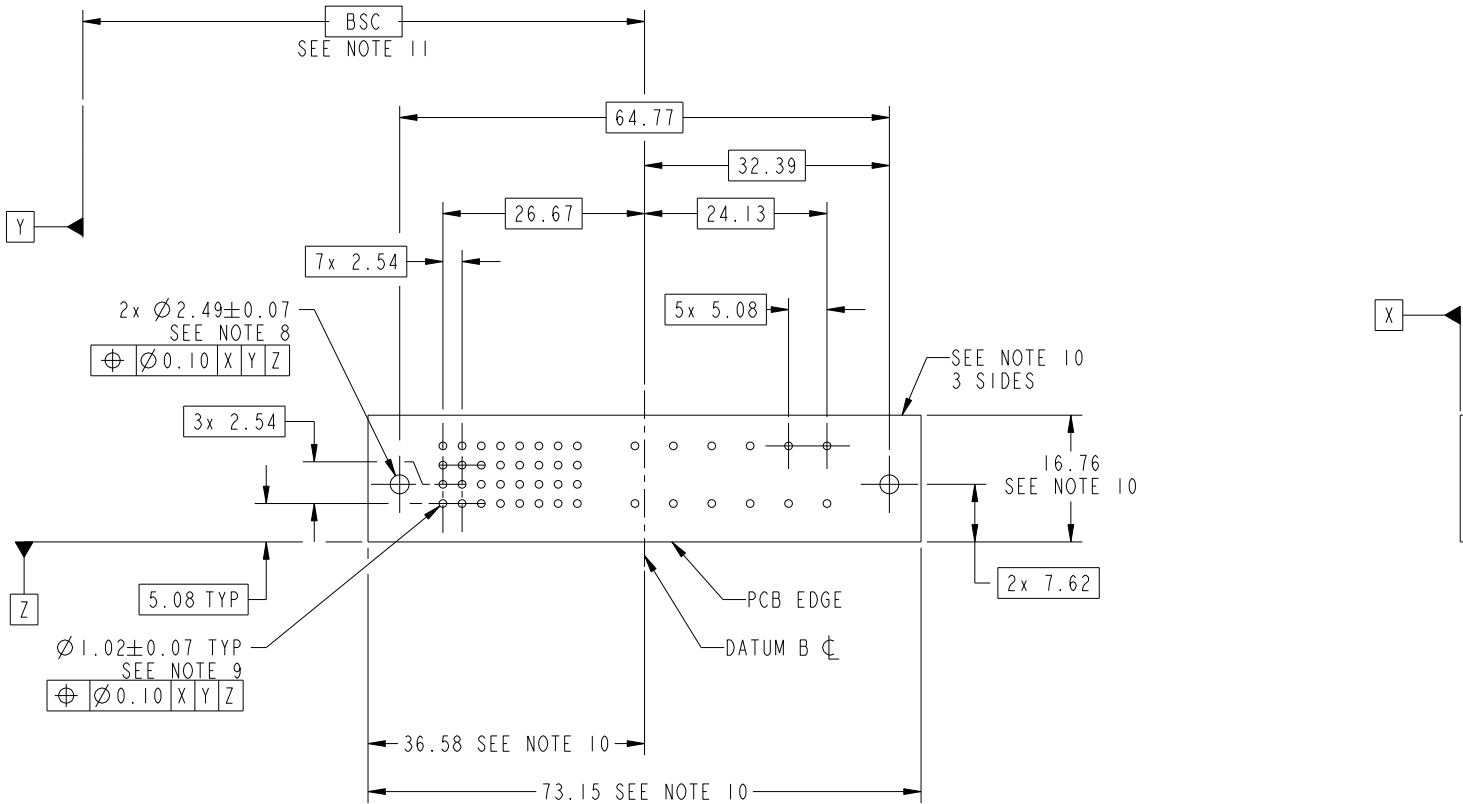
dr	Ruan MT	2015/12/21	projection 	MM ←————→	size	A4	scale	1:1
eng	Ruan MT	2016/01/07			ecn no	-		
chr	Fancy Zhang	2016/01/06			rel level	Released		
appr	Pei-Ming Zheng	2016/01/07	product family	PwrBlade				
	title	88S RIGHT ANGLE STB HEADER		dwg no	51939-997		rev	A
www.fci.com	cat. no.	-	Product - Customer Drw			sheet 2 of 4		



Copyright FCI.

PRODUCT NUMBER

51939-997LF



RECOMMENDED PCB LAYOUT

dr	Ruan MT	2015/12/21	projection 	MM ←————→	size	A4	scale	1:1
eng	Ruan MT	2016/01/07			ecn no	-		
chr	Fancy Zhang	2016/01/06			rel level	Released		
appr	Pei-Ming Zheng	2016/01/07	product family	PwrBlade	rev	51939-997	A	
www.fci.com		title	88S RIGHT ANGLE STB HEADER		cat. no.	-	Product - Customer Drw	sheet 3 of 4



Copyright FCI.

PRODUCT NUMBER

51939-997LF

NOTES:

1. DIMENSIONS AND TOLERANCES ARE IN ACCORDANCE WITH ASME Y14.5M, 1994 UNLESS OTHERWISE SPECIFIED.

CONNECTOR NOTES:

- 2. HOUSING MATERIAL: UL 94 V-0 GLASS FILLED HIGH-TEMP THERMOPLASTIC
POWER CONTACT MATERIAL: COPPER ALLOY
SIGNAL PIN MATERIAL: COPPER ALLOY
- 3. SEE FCI PLATING SPEC 10064183.
- 4. MANUFACTURER'S NAME, DATE CODE AND OPTIONAL P/N TO APPEAR ON THIS SURFACE. THE MARK CAN BE OMITTED IF THERE IS NOT ENOUGH SPACE ON THIS SURFACE.
- 5. PRODUCT SPECIFICATION GS-12-149.
APPLICATION SPECIFICATION BUS-20-067.
- 6. PACKAGED IN TRAYS.

PCB NOTES:

- 7. ALL HOLE DIAMETERS ARE FINISHED HOLE SIZE.
- 8. MOUNTING HOLES, WHERE APPLICABLE, ARE UNPLATED.
- 9. $\varnothing 1.151 \pm 0.025$ DRILLED HOLES PLATED WITH
0.008 MIN SnPb OR Sn OVER 0.03
TO 0.08 Cu PLATING TO ACHIEVE
 $\varnothing 1.02 \pm 0.07$ HOLE.
- 10. CONNECTOR KEEP-OUT ZONE.
- 11. DATUM AND BASIC DIMENSIONS ARE ESTABLISHED BY CUSTOMER.

dr	Ruan MT	2015/12/21	projection 	MM 	size	A4	scale	1:1
eng	Ruan MT	2016/01/07			ecn no	-		
chr	Fancy Zhang	2016/01/06			product family	PwrBlade	rel level	Released
appr	Pei-Ming Zheng	2016/01/07			rev	51939-997	A	
		title	88S RIGHT ANGLE STB HEADER		dwg no			
www.fci.com	cat. no.	-	Product - Customer Drw			sheet 4 of 4		



Copyright FCI.