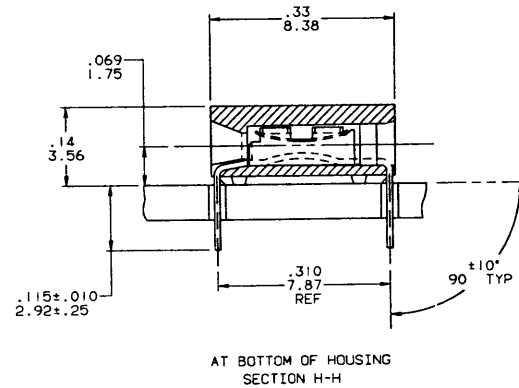
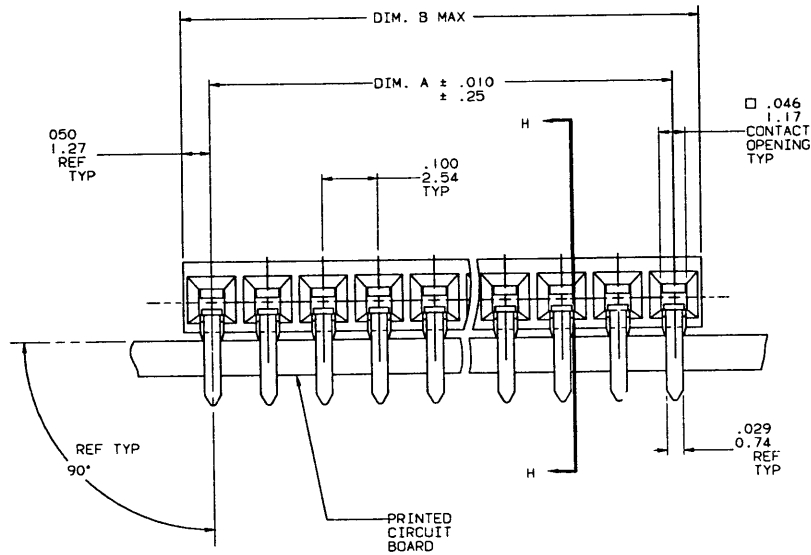
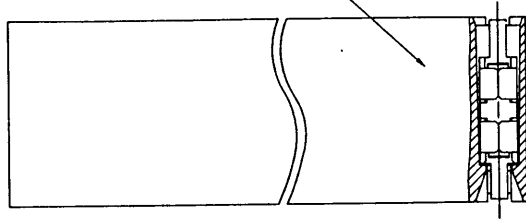


PRODUCT NO
SEE TABLE

REVISIONS			
REV	DESCRIPTION	BY	DATE
C	REDRAW ADD 1X1 UNASSIGNED. REDUCED FROM 4 TO 3 PAGES.	JGS	5/7/90

SEE NOTE ③



CONTROLLED DOCUMENT

SHEET INDEX		ISSUE		C C C		DO NOT SCALE DRAWING		TOLERANCE UNLESS OTHERWISE NOTED		INCH/MM		MATERIAL		DR		DATE		CUSTOMER COPY		CODE IDENT	
XXXX		1 2 3						.001/.01/.013				SEE NOTES		J. SHREINER		5/7/90		22526			
FABULATION SHEETS REQUIRED		YES NO		INCH MM		THIRD ANGLE PROJECTION		.0001/.0020/.0001/.051		FINISH		ENGR		M. HAHN		5/7/90		SCALE		SIZE DWG NO	
NO								ANGLES 0° ± 2°				APPR		M. HAHN		5/7/90		10/1 D		67232	
																		CAD		SHEET 1 OF 3	



NOTE: This print is the property of and contains proprietary designs of THE DUPONT COMPANY. No part of the design shown on this print may be used in any way without the written consent of DUPONT ELECTRONICS, New Cumberland, PA.

PRODUCT NO	NO. OF POS.	DIM. A ±.020/.50	DIM. B MAX.	
67232-001	1X1	.000/.00	.100/2.54	UNASSIGNED
67232-002	1X2	.100/2.54	.200/5.08	
-003	1X3	.200/5.08	.300/7.62	
-004	1X4	.300/7.62	.400/10.16	
-005	1X5	.400/10.16	.500/12.70	
-006	1X6	.500/12.70	.600/15.24	
-007	1X7	.600/15.24	.700/17.78	
-008	1X8	.700/17.78	.800/20.32	
-009	1X9	.800/20.32	.900/22.86	
-010	1X10	.900/22.86	1.000/25.40	
-011	1X11	1.000/25.40	1.100/27.94	
-012	1X12	1.100/27.94	1.200/30.48	
-013	1X13	1.200/30.48	1.300/33.02	
-014	1X14	1.300/33.02	1.400/35.56	
-015	1X15	1.400/35.56	1.500/38.10	
-016	1X16	1.500/38.10	1.600/40.64	
-017	1X17	1.600/40.64	1.700/43.18	
-018	1X18	1.700/43.18	1.800/45.72	
-019	1X19	1.800/45.72	1.900/48.26	
-020	1X20	1.900/48.26	2.000/50.80	
-021	1X21	2.000/50.80	2.100/53.34	
-022	1X22	2.100/53.34	2.200/55.88	
-023	1X23	2.200/55.88	2.300/58.42	
-024	1X24	2.300/58.42	2.400/60.96	
-025	1X25	2.400/60.96	2.500/63.50	
-026	1X26	2.500/63.50	2.600/66.04	
-027	1X27	2.600/66.04	2.700/68.58	
-028	1X28	2.700/68.58	2.800/71.12	
-029	1X29	2.800/71.12	2.900/73.66	
-030	1X30	2.900/73.66	3.000/76.20	
-031	1X31	3.000/76.20	3.100/78.74	
-032	1X32	3.100/78.74	3.200/81.28	
-033	1X33	3.200/81.28	3.300/83.82	
-034	1X34	3.300/83.82	3.400/86.36	
-035	1X35	3.400/86.36	3.500/88.90	
-036	1X36	3.500/88.90	3.600/91.44	
-037	1X37	3.600/91.44	3.700/93.98	
-038	1X38	3.700/93.98	3.800/96.52	
-039	1X39	3.800/96.52	3.900/99.06	
-040	1X40	3.900/99.06	4.000/101.60	
67232-041	1X41	4.000/101.60	4.100/104.14	

PRODUCT NO.	NO. OF POS.	DIM. A ±.020/.50	DIM. B MAX.
67232-051	1X51	5.000/127.00	5.100/129.54
-052	1X52	5.100/129.54	5.200/132.08
-053	1X53	5.200/132.08	5.300/134.62
-054	1X54	5.300/134.62	5.400/137.16
-055	1X55	5.400/137.16	5.500/139.70
-056	1X56	5.500/139.70	5.600/142.24
-057	1X57	5.600/142.24	5.700/144.78
-058	1X58	5.700/144.78	5.800/147.32
-059	1X59	5.800/147.32	5.900/149.86
-060	1X60	5.900/149.86	6.000/152.40
-061	1X61	6.000/152.40	6.100/154.94
-062	1X62	6.100/154.94	6.200/157.48
-063	1X63	6.200/157.48	6.300/160.02
-064	1X64	6.300/160.02	6.400/162.56
67232-065	1X65	6.400/162.56	6.500/165.10

REVISIONS			
REV	DESCRIPTION	BY	DATE
C			

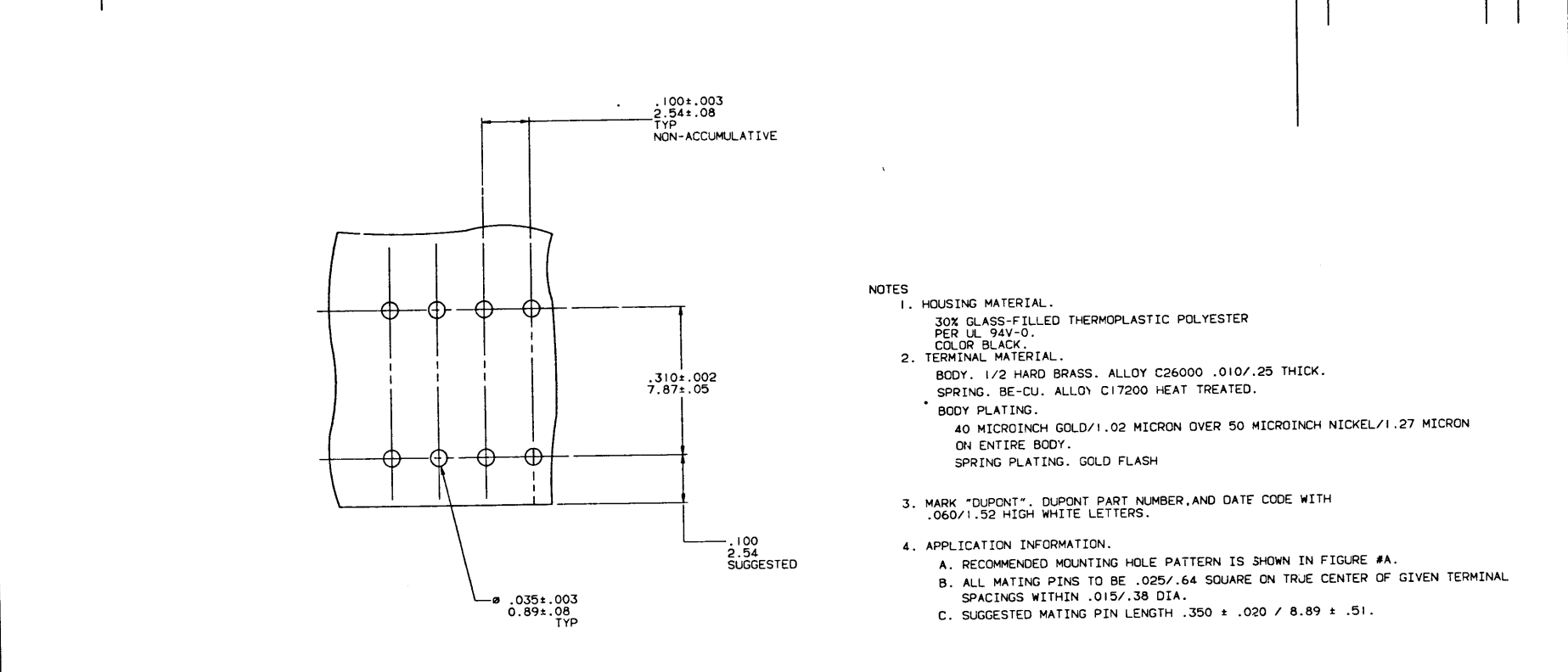
CONTROLLED DOCUMENT

SHEET INDEX		ISSUE		CUSTOMER COPY		DATE		DuPont Electronics		DU PONT	
SH NO		1		CODE IDENT		22526		DATE		5/7/90	
MODEL		XXXX		DO NOT SCALE DRAWING		TOLERANCE UNLESS OTHERWISE NOTED		INCH/MM		MATERIAL	
FINISH		ENGR		THIRD ANGLE PROJECTION		LINEAR		.001, .01, .01, .3		DR J. SHREINER	
TABULATION SHEETS REQUIRED		YES NO		INCH MM		ANGLES		0° ±2°		DATE	
										5/7/90	
										5/7/90	
										5/7/90	
										TITLE	
										1X.100 CARD CONNECTOR	
										SCALE SIZE DWG NO	
										XXX D 67232	
										SHEET 2	

NOTE: This print is the property of and contains proprietary designs of THE DUPONT COMPANY. No part of the design shown on this print may be used in any way without the written consent of DUPONT ELECTRONICS, New Comerford, PA.

8 7 6 5 4 3 2 1

REVISIONS			
REV	DESCRIPTION	BY	DATE
C			



- NOTES
- HOUSING MATERIAL.
30% GLASS-FILLED THERMOPLASTIC POLYESTER
PER UL 94V-0.
COLOR BLACK.
 - TERMINAL MATERIAL.
BODY. 1/2 HARD BRASS. ALLOY C26000 .010/.25 THICK.
SPRING. BE-CU. ALLOY C17200 HEAT TREATED.
BODY PLATING.
40 MICROINCH GOLD/1.02 MICRON OVER 50 MICROINCH NICKEL/1.27 MICRON
ON ENTIRE BODY.
SPRING PLATING. GOLD FLASH
 - MARK "DUPONT", DUPONT PART NUMBER, AND DATE CODE WITH
.060/1.52 HIGH WHITE LETTERS.
 - APPLICATION INFORMATION.
A. RECOMMENDED MOUNTING HOLE PATTERN IS SHOWN IN FIGURE #A.
B. ALL MATING PINS TO BE .025/.64 SQUARE ON TRUE CENTER OF GIVEN TERMINAL
SPACINGS WITHIN .015/.38 DIA.
C. SUGGESTED MATING PIN LENGTH .350 ± .020 / 8.89 ± .51.

FIGURE A
SCALE 10/1

**CONTROLLED
DOCUMENT**

SHEET INDEX		ISSUE SH NO		DO NOT SCALE DRAWING		TOLERANCE UNLESS OTHERWISE NOTED		INCH/MM		MATERIAL		DR J. SHREINER		DATE 5/7/90		CUSTOMER COPY		DuPont Electronics		DUPONT	
XXXX		1				.001±.005/.001±.13		XXXXXX		XXXXXX		M. HAHN		5/7/90		22526		TITLE		1X .100 CARD CONNECTOR	
TABULATION SHEETS REQUIRED		YES/NO		THIRD ANGLE PROJECTION		.0001±.0020/.0001±.051		FINISH		ENGR M. HAHN		M. HAHN		5/7/90		SCALE		SIZE DWG NO		CAD	
NO				INCH MM		ANGLES 0° ± 2°		XXXXXX		APPD M. HAHN		M. HAHN		5/7/90		XXX D		67232		SHEET 3	

NOTE: This print is the property of and embodies proprietary designs of THE DUPONT COMPANY. No part of the design shown on this print may be used in any way without the written consent of DUPONT ELECTRONICS, New Cumberland, PA.