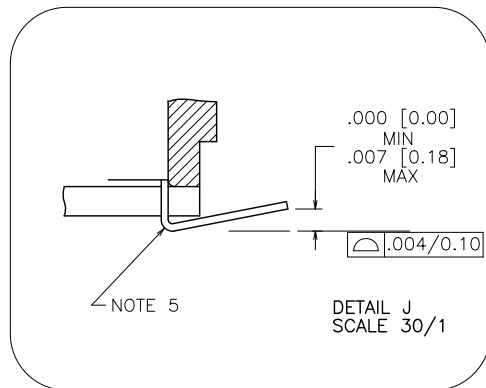
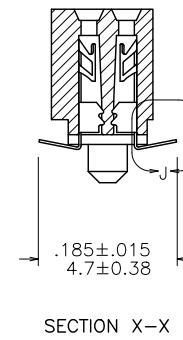
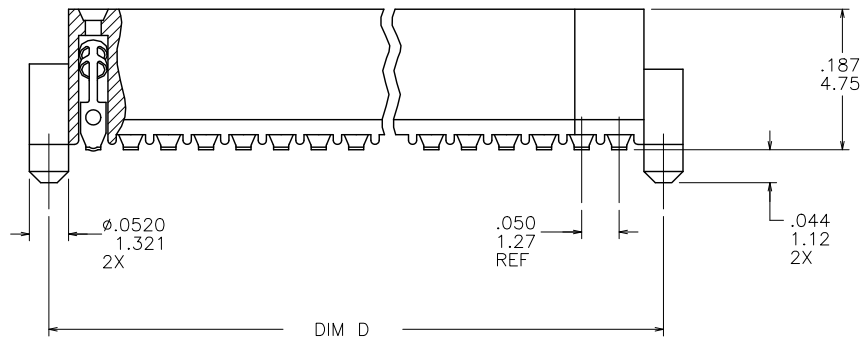
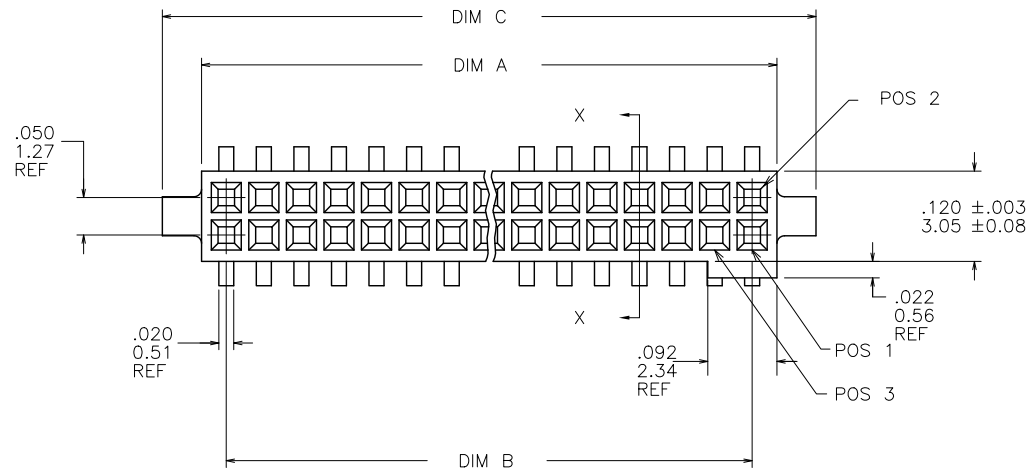


PRODUCT NUMBER
SEE TABLE



mat'l. code				surface		tolerance		projection		product family	
-				ISO 1302 ✓		ISO 406 ISO 1101				RIB CAGE	
ltr	ecn no	dr	date	tolerances unless otherwise specified						title	
AA	M05-0123	MHT	6/06/05	angles	linear	XX±.01/XX±0.3		INCH/MM		.050cc VERT. SMT.	
AB	M06-0284	AEA	7/27/06			XXX±.005/XX±0.13				W/LOC. & POL. FEATURE	
AC	M08-0053	CMR	2/27/08	σ±2'			XXXX±.0020/XXX±0.051		scale 1:1		
AD	M09-0058	CMR	4/06/09	dr	M. CLOUSER	6/26/91				dwg no sheet 1 of 3 size 87024 A3	
AE	M09-0071	MHT	4/30/09	engr	B. BARUFFALO	6/26/91				type Product Customer Drawing	
AF	N10-0174	YOH	6/17/10	chr	B. BARUFFALO	6/26/91					
AG	ELX-N-010202	YO	2/8/12	appd	B. BARUFFALO	6/26/91					
sheet	revision	AG	AG	AG							
index	sheet	1	2	3							

PRODUCT NO. NOTE 9	SIZE	DIM A	DIM B	DIM C	DIM D	SPECIAL PACKAGING	TAPE WIDTH PITCH	PIECES PER REEL
87024-605	2 X 5	.266/6.756	.200/5.08	.370/9.398	.3200/8.128	NOTE 6	24mm / 12mm	750
-610	2 X 10	.516/13.106	.450/11.43	.620/15.748	.5700/14.478	NOTE 6	24mm / 12mm	750
-610P	2 X 10	.516/13.106	.450/11.43	.620/15.748	.5700/14.478	NOTE 8	24mm / 16mm	400
-615	2 X 15	.766/19.456	.700/17.78	.870/22.098	.8200/20.828	NOTE 6	44mm / 12mm	500
-620	2 X 20	1.016/25.806	.950/24.13	1.120/28.448	1.0700/27.178	NOTE 6 & 7	44mm / 12mm	500
-625	2 X 25	1.266/32.156	1.200/30.48	1.370/34.798	1.3200/33.528	NOTE 6	56mm / 12mm	500
-630	2 X 30	1.516/38.506	1.450/36.83	1.620/41.148	1.5700/39.878	NOTE 6 & 7	56mm / 12mm	500
-635	2 X 35	1.766/44.856	1.700/43.18	1.870/47.498	1.8200/46.228	NOTE 6	72mm / 12mm	500
-640	2 X 40	2.016/51.206	1.950/49.53	2.120/53.848	2.0700/52.578	NOTE 6 & 7	72mm / 12mm	500
-645	2 X 45	2.266/57.556	2.200/55.88	2.370/60.198	2.3200/58.928	NOTE 6	72mm / 12mm	500
87024-650	2 X 50	2.516/63.906	2.450/62.23	2.620/66.548	2.5700/65.278	NOTE 6 & 7	88mm / 12mm	500

NOTES:

- HOUSING MATERIAL:
LCP GLASS FILLED FLAME RETARDANT PER UL 94V-0
COLOR: NATURAL
- TERMINAL MATERIAL: BeCu
- TERMINAL PLATING:
30u"/.76um MIN HARD GOLD OR GXT OVER Ni ON CONTACT ZONES,
100u"/2.54um MIN TIN OVER Ni IN SOLDERING ZONES,
OTHERWISE GOLD FLASH OR UNPLATED.
- APPLICATION INFORMATION:
 - RECOMMENDED MOUNTING PAD PATTERN IS SHOWN IN FIGURE "A".
 - MATING PINS TO BE .0176/0.447 TO .0181/0.459 DIA.
 - MATING PIN TIPS TO BE IN TRUE POSITION TO MATING GRID WITHIN .006/0.15 DIA.
 - SUGGESTED MATING PIN LENGTH .130/3.30 ±.010/0.25.
- LEAD TIPS TO BE ABOVE HEEL UP TO .007/0.18 MAX. COPLANARITY TO BE MEASURED AT LOWEST POINT (HEEL).
- ADD "TR" TO END OF DASH NUMBER FOR TAPE AND REEL PACKAGING WITH CAP. TOOLED ONLY FOR NOTED CONNECTORS.
- ADD "CT" TO END OF DASH NUMBER FOR CONNECTOR WITH CAP FOR VACUUM PICKUP IN TUBE.
- CUSTOMER SPECIAL, TAPE AND REEL PACKAGING, TOOLED ONLY FOR NOTED CONNECTOR.
- ADD "LF" SUFFIX AT THE END OF PART NUMBER FOR LEAD FREE OPTION.
- IF LF P/N THE PRODUCT MEETS EUROPEAN UNION DIRECTIVES AND OTHER COUNTRY REGULATION AS DESCRIBED IN GS-22-008.
- THE HOUSING WILL WITHSTAND EXPOSURE TO 260°C PEAK TEMPERATURE FOR 20 SECONDS IN A CONVECTION, INFRA-RED OR VAPOR PHASE REFLOW OVEN. SEE APPLICATION NOTES/PROCEDURES IF THEY ARE AVAILABLE.
- PRODUCT SPEC PER BUS-12-087.

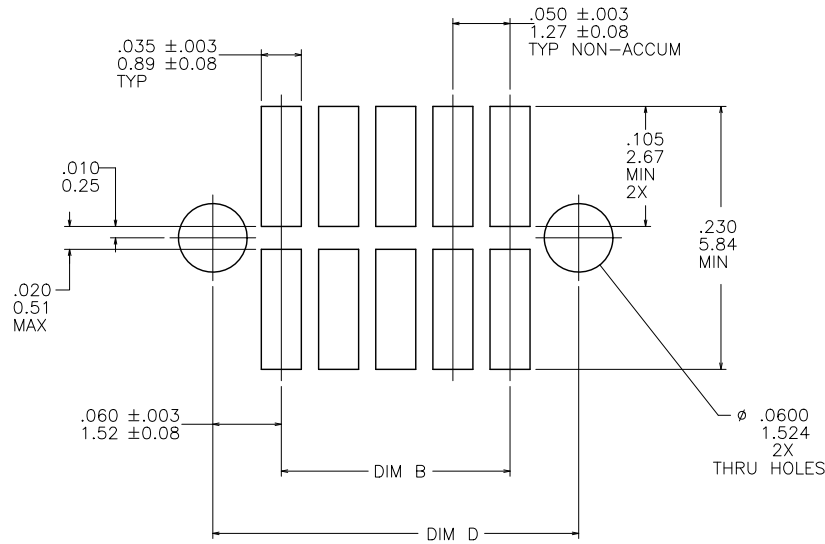


FIGURE A
RECOMMENDED
P.C.B. LAYOUT

mat'l. code		surface		tolerance		projection		product family		
-		ISO 1302 ✓		ISO 406 ISO 1101				RIB CAGE		
ltr	ecn	no	dr	date	tolerances unless otherwise specified		title			
AG					angles	linear		.050cc VERT. SMT. W/LOC. & POL. FEATURE		
					σ±2'			scale 1:1		
					dr	M. CLOUSER	6/26/91	dwg no		
					engr	B. BARUFFALO	6/26/91	sheet 2 of 3 size		
					chr	B. BARUFFALO	6/26/91	87024 A3		
					appd	B. BARUFFALO	6/26/91	type Product Customer Drawing		
sheet index	revision sheet									

1

2 3

4

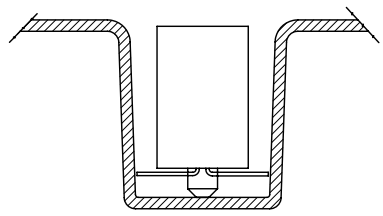
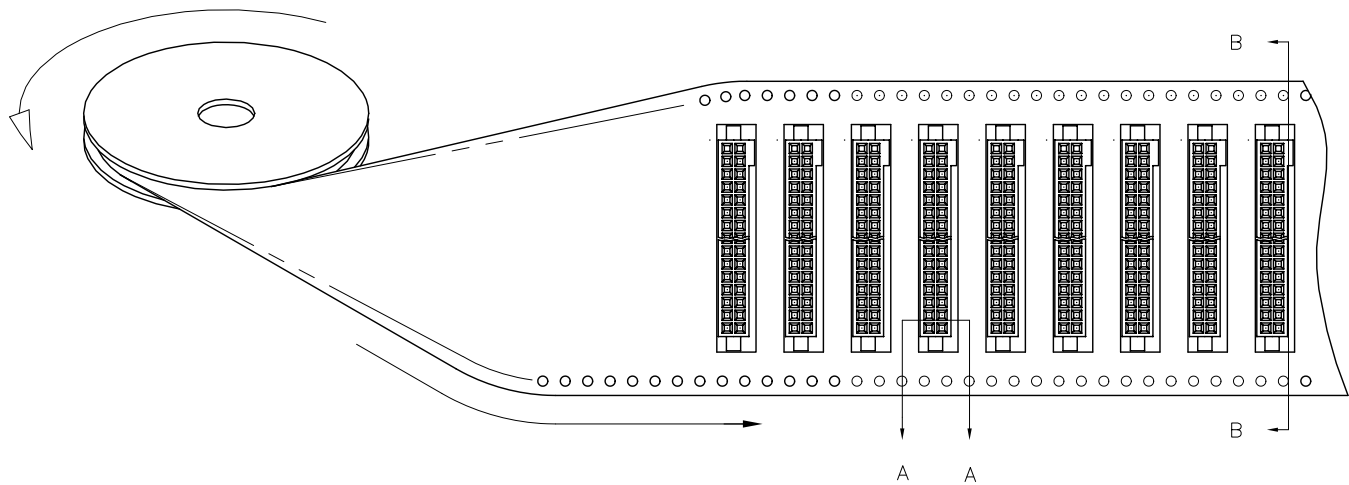
5

6

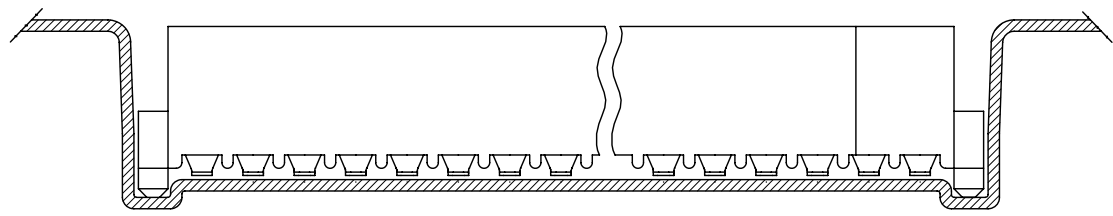
REFERENCE ONLY

UNREELING DIRECTION

TAPE WIDTH'S 32mm AND ABOVE HAS BOTH FEED TRACKS, BELOW 32mm HAS TOP FEED TRACK ONLY.



SECTION A-A



SECTION B-B

mat'l. code		surface		tolerance		projection		product family		
-		ISO 1302 ✓		ISO 406 ISO 1101				RIB CAGE		
ltr	ecn	no	dr	date		tolerances unless otherwise specified		title		
AG						angles	linear	.050cc VERT. SMT. W/LOC. & POL. FEATURE		
						σ±2'	$XX \pm .01 / XX \pm 0.3$ $XXX \pm .005 / XXX \pm 0.13$ $XXXX \pm .0020 / XXX \pm 0.051$	INCH/MM		
						dr	M. CLOUSER	6/26/91	scale 1:1	
						enr	B. BARUFFALO	6/26/91		
						chr	B. BARUFFALO	6/26/91	dwg no 87024 sheet 3 of 3 size A3	
						app	B. BARUFFALO	6/26/91	type Product Customer Drawing	

sheet	revision																		
index	sheet																		



Copyright FCI

1

2

3

4

5

6