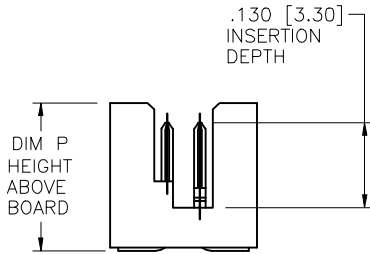
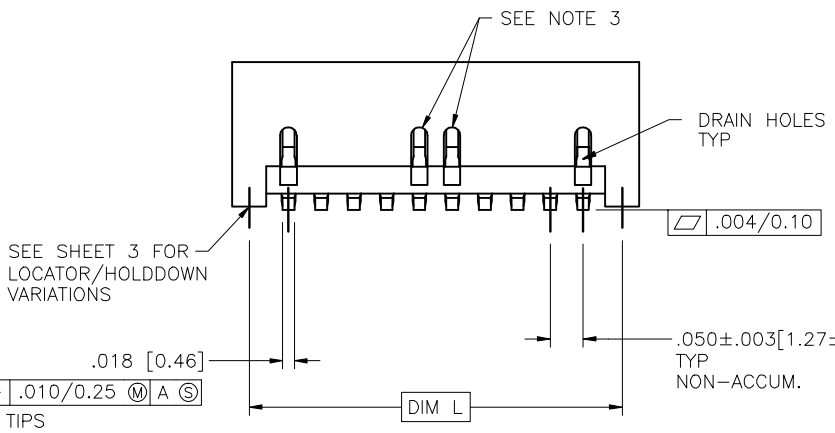
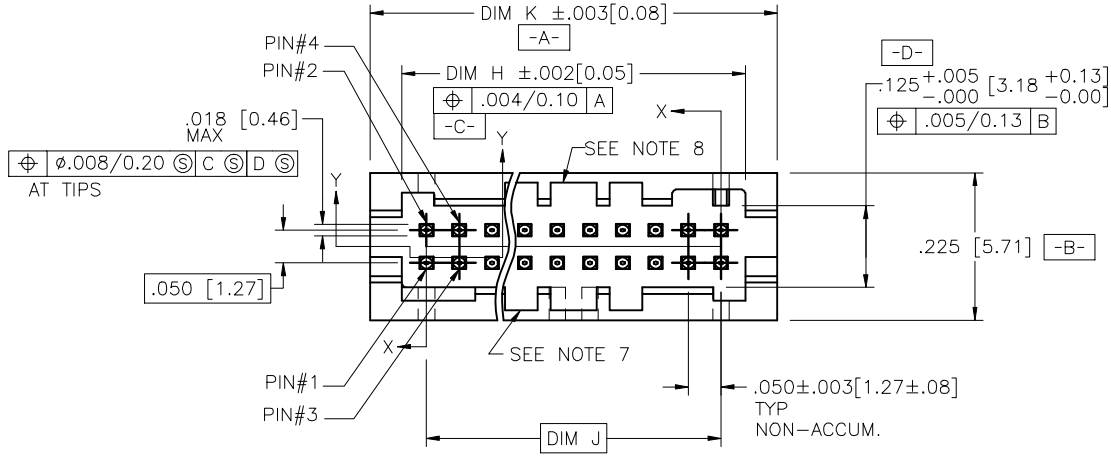


PRODUCT NUMBER  
SEE TABLE



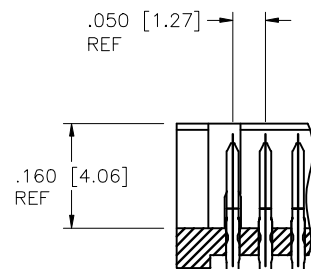
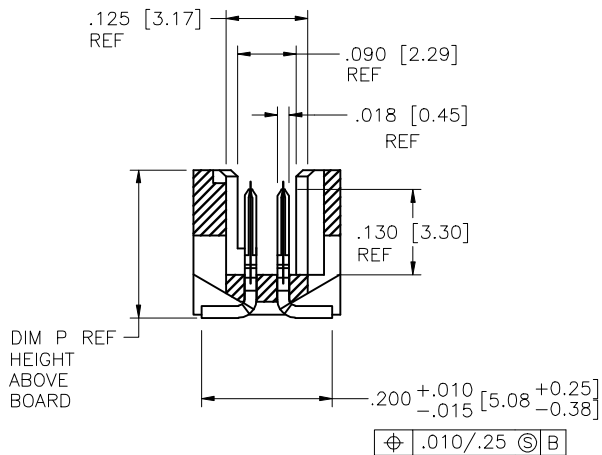
mat'l. code				surface	tolerance	projection	product family
SEE NOTES				ISO 1302	ISO 406	ISO 1101	RIB CAGE
ltr	ecn no	dr	date	tolerances unless otherwise specified		INCH/MM	title
U	v11295	CRG	4/285/01	angles	XX ±.01/XX±.03		RIB CAGE III SMT
V	v10329	CRG	6/06/01	linear	XXX±.06/XX±0.13	scale 1:1	VERT. HEADER ASS'Y
W	V04-0004	DAI	1/21/04	σ±z	XXXX±.0020/XXX±0.051		dwg no
X	M05-0084	MHT	5/05/05	dr	M. CORNMAN	6/07/95	sheet 1 of 6 size
Y	M06-0284	AEA	7/27/06	engr	D. WHITING	6/07/95	95781
AA	M08-0245	MHT	8/27/08	chr	D. WHITING	6/07/95	A3
AB	M09-0058	MHT	4/02/09	appd	D. WHITING	6/07/95	type
sheet	revision	AB	AB	AB	AB	AB	Product Customer Drawing
index	sheet	1	2	3	4	5	



Copyright FCI

form A3

PRODUCT NUMBER SEE TABLE	SIZE	DIM H	DIM J	DIM K	DIM L
	2X5	.275/6.99	.200/5.08	.372/9.45	.320/8.13
	2X10	.525/13.34	.450/11.43	.622/15.80	.570/14.48
	2X15	.775/19.68	.700/17.78	.872/22.15	.820/20.83
	2X20	1.025/26.03	.950/24.13	1.122/28.50	1.070/27.18
	2X25	1.275/32.38	1.200/30.48	1.372/34.85	1.320/33.53
	2X30	1.525/38.74	1.450/36.83	1.622/41.20	1.570/39.88
	2X35	1.775/45.08	1.700/43.18	1.872/47.55	1.820/46.23
	2X40	2.025/51.43	1.950/49.53	2.122/53.90	2.070/52.58
	2X45	2.275/57.78	2.200/55.88	2.372/60.25	2.320/58.93
	2X50	2.525/64.14	2.450/62.23	2.622/66.60	2.570/65.28



mat'l. code		surface		tolerance		projection		product family	
SEE NOTES		ISO 1302		ISO 406		ISO 1301		RIB CAGE	
ltr	ecp no	dr	date	tolerances unless otherwise specified					
AB				angles	linear	XX ±.01/XX±.03		title	
				0°±2'		XXX±.006/XX±0.13		RIB CAGE III SMT	
						XXXX.0020/XXX±0.051		VERT. HEADER ASS'Y	
		dr	M. CORNMAN	6/07/95	scale		1:1	dwg no	
		engr	D. WHITING	6/07/95	FCJ			sheet 2 of 6 size	
		chr	D. WHITING	6/07/95				95781 A3	
		appd	D. WHITING	6/07/95				type	
sheet		revision							
index		sheet							

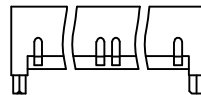
PRODUCT NUMBER  
SEE TABLE

# LOCATOR/HOLDDOWN VARIATIONS

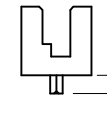
STYLE 1



STYLE 5

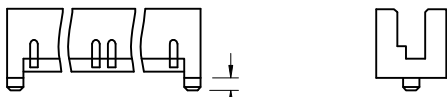


.0580 [1.473]

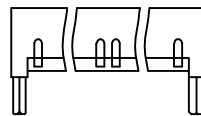


.0470  $\begin{matrix} +.0005 \\ -.0010 \end{matrix}$  [1.194  $\begin{matrix} +.013 \\ -.025 \end{matrix}$ ]  
 .040  $\begin{matrix} +.001 \\ -.002 \end{matrix}$  [1.02  $\begin{matrix} +.03 \\ -.05 \end{matrix}$ ]  
 .040  $\begin{matrix} +.0005 \\ -.0010 \end{matrix}$  [1.194  $\begin{matrix} +.013 \\ -.025 \end{matrix}$ ]  
 .040  $\begin{matrix} +.001 \\ -.002 \end{matrix}$  [1.02  $\begin{matrix} +.03 \\ -.05 \end{matrix}$ ]

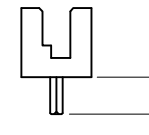
STYLE 2



STYLE 6  
SEE NOTE 9



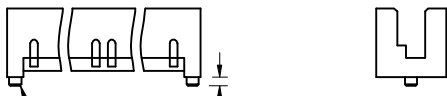
.120 [3.04]



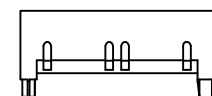
$\phi$  .0520 [1.321]  
 $\phi$  .004/0.10 (M) A S B S (ALL PEG CONFIGURATIONS)

.0520  $\begin{matrix} +.0005 \\ -.0010 \end{matrix}$  [1.321  $\begin{matrix} +.013 \\ -.025 \end{matrix}$ ]  
 .040  $\begin{matrix} +.001 \\ -.002 \end{matrix}$  [1.02  $\begin{matrix} +.03 \\ -.05 \end{matrix}$ ]  
 .0520  $\begin{matrix} +.0005 \\ -.0010 \end{matrix}$  [1.321  $\begin{matrix} +.013 \\ -.025 \end{matrix}$ ]  
 .040  $\begin{matrix} +.001 \\ -.002 \end{matrix}$  [1.02  $\begin{matrix} +.03 \\ -.05 \end{matrix}$ ]

STYLE 3



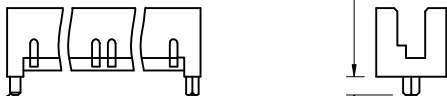
STYLE 7



R.0050 [0.127]  
 .028 [0.71]  
 .024 [0.61]  
 $\phi$  .0394 [1.000]

.0065  $\pm$  .001  
 [.165  $\pm$  .025]  
 $\phi$  .0400 [1.02]  
 R.002 [0.05] MAX

STYLE 4



.058  $\pm$  .003 [1.47  $\pm$  .08]

.008 [.20] X 45°  
 $\phi$  .034  $\pm$  .001 [0.86  $\pm$  .03]  
 .0520  $\begin{matrix} +.0005 \\ -.0010 \end{matrix}$  [1.321  $\begin{matrix} +.013 \\ -.025 \end{matrix}$ ]  
 .030 [0.076]  
 .040  $\begin{matrix} +.001 \\ -.002 \end{matrix}$  [1.02  $\begin{matrix} +.03 \\ -.05 \end{matrix}$ ]  
 .008  $\pm$  .003 [.20  $\pm$  .08]

mat'l. code		surface	tolerance	projection	product family
SEE NOTES		ISO 1302	ISO 406	ISO 1101	RIB CAGE
ltr	ecp no	dr	date	title	
AB				RIB CAGE III SMT	
		angles	linear	INCH/MM	VERT. HEADER ASS'Y
		linear	linear	scale 1:1	
		dr	M. CORNMAN	6/07/95	dwg no
		engr	D. WHITING	6/07/95	95781
		chr	D. WHITING	6/07/95	sheet 3 of 6
		appd	D. WHITING	6/07/95	size A3
sheet	revision	type Product Customer Drawing			
index	sheet				

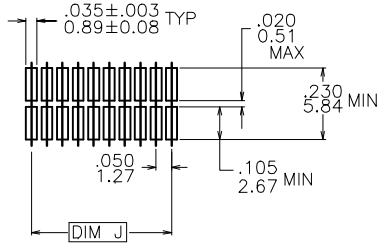


Copyright FCJ

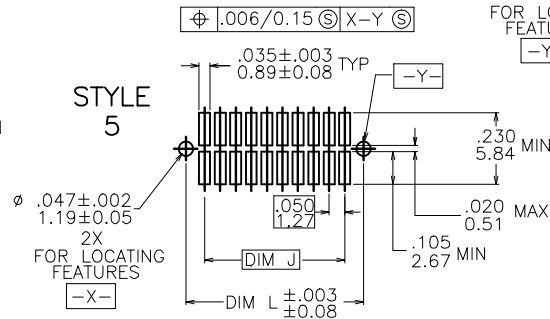
PRODUCT NUMBER  
SEE TABLE

# RECOMMENDED PCB MOUNTING PAD PATTERN

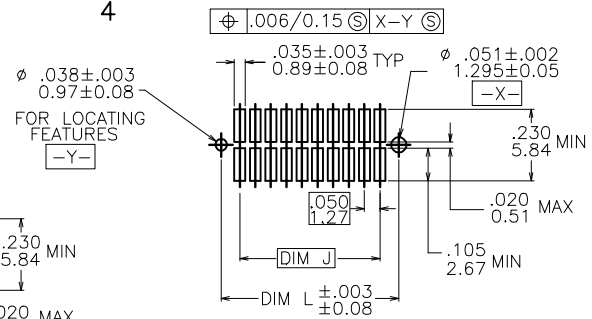
STYLE 1



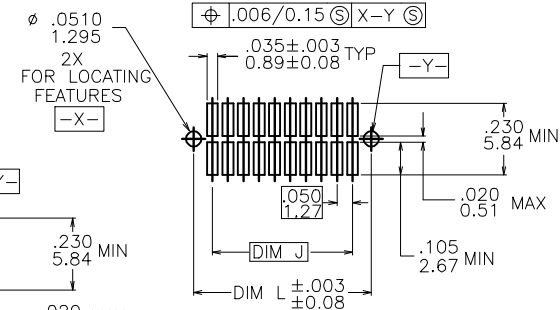
STYLE 5



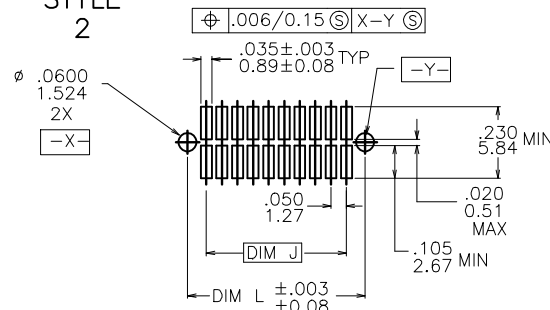
STYLE 4



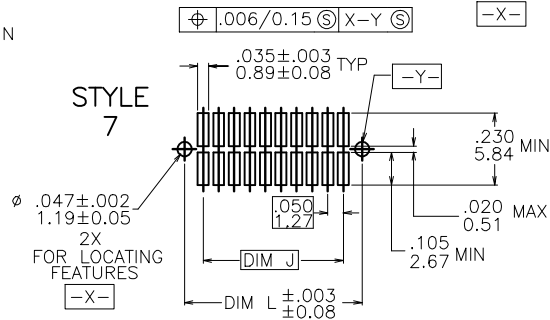
STYLE 6



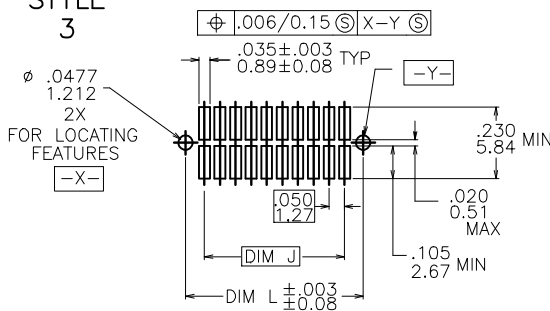
STYLE 2



STYLE 7



STYLE 3



mat'l. code	SEE NOTES	surface	ISO 1902	tolerance	ISO 406	projection	product family
ltr	ec'n no	dr	date	tolerances unless otherwise specified		 INCH/MM	RIB CAGE
AB				linear	.XX ±.01/.X±0.3		RIB CAGE III SMT
					.XXX±.006/.XX±0.13	scale 1:1	VERT. HEADER ASS'Y
					.XXXX±.0020/.XXX±0.051		sheet 4 of 6 size
dr	M. CORNMAN	6/07/95					95781
engr	D. WHITING	6/07/95					A3
chr	D. WHITING	6/07/95					type Product Customer Drawing
appd	D. WHITING	6/07/95					
sheet	revision						
index	sheet						

PRODUCT NUMBER NOTE 1,4A & 4B	DIM P HEIGHT ABOVE BOARD (REF.)	HOLDDOWN STYLE
72428-1XX	.244/6.20	1
73546-1XX	.364/9.25	1
73547-1XX	.364/9.25	2
73548-1XX	.364/9.25	4
84700-1XX	.226/5.74	7
84701-1XX	.298/7.57	7
84734-1XX	.364/9.25	7
87401-1XX	.226/5.74	6
87409-1XX	.226/5.74	2
87849-1XX	.226/5.74	1
88566-1XX	.260/6.60	2
90098-1XX	.298/7.57	2
90863-1XX	.226/5.74	1
91036-1XX	.364/9.25	5
91423-1XX	.226/5.74	2
91855-1XX	.226/5.74	5
92099-1XX	.226/5.74	4
92412-1XX	.298/7.57	4
93206-1XX	.226/5.74	3
93221-1XX	.298/7.57	1
93289-1XX	.298/7.57	5

SEE NOTE 10

\*

TABLE A

\* CUSTOMER SPECIAL

NOTES:

- ① XXXXX-XXXLF  
LEAD FREE OPTION (NOTE 11& 13)  
NUMBER OF POSITIONS (NOTE 2)
- ② NUMBER OF POSITIONS = 05 THRU 50 IN 5 POS INCREMENTS.  
(EXAMPLE : 105=10 POS., 110=20 POS. ETC.)
- ③ REQUIRED ON -X40,-X45 & -X50 POSITION PARTS ONLY.
4. PACKAGING :  
A. ANTISTATIC TUBES. SEE TABLE A  
B. ADD "CT" TO END OF DASH NUMBER FOR CONNECTOR WITH VACUUM CAP IN ANTISTATIC TUBES.  
EX. : XXXXX-1XXCT  
C. PRESSURE SEALED TAPE AND REEL. SEE TABLE C FOR AVAILABLE PART NUMBERS.
- ⑤ HOUSING MATERIAL :  
GLASS FILLED THERMOPLASTIC FLAME RETARDANT PER UL 94V-0.  
COLOR : NATURAL
- ⑥ TERMINAL PLATING :  
30u"/.76u HARD Au OVER 50u"/1.27u Ni ON CONTACT ZONES.  
100u"/2.54u TIN LEAD OVER 50u"/1.27u Ni IN SOLDERING ZONES.  
LEAD FREE OPTION:  
30u"/.76u HARD Au OVER 50u"/1.27u Ni ON CONTACT ZONES.  
100u"/2.54u PURE TIN OVER 50u"/1.27u Ni IN SOLDERING ZONES.
- ⑦ MOLDING FLOW RESTRICTOR QUANTITY AND LOCATION IS MANUFACTURING OPTION.
- ⑧ VACUUM CAP SLOT REQUIRED ON ALL SIZES, SLOT MAY BE LOCATED ON OPPOSITE SIDE FOR 2 X 5.
- ⑨ STYLE 6 IS NOT AVAILABLE IN TAPE AND REEL.
- ⑩ 90863-1XX IS PACKAGED ONLY IN TAPE AND REEL.
- ⑪ ADD LF SUFFIX AT THE END OF PART NUMBER FOR LEAD FREE OPTION.
12. THE HOUSING WILL WITHSTAND EXPOSURE TO 260°C PEAK TEMPERATURE FOR 20 SECONDS IN A CONVECTION, INFRA-RED OR VAPOR PHASE REFLOW OVEN. SEE APPLICATION NOTE/PROCEDURES IF THEY ARE AVAILABLE.
- ⑬ THIS PRODUCT MEETS EUROPEAN UNION DIRECTIVES AND OTHER COUNTRY REGULATION AS DESCRIBED IN GS-22-008.

mat'l. code		surface	tolerance	projection	product family
SEE NOTES		ISO 1302	ISO 1101		RIB_CAGE
ltr	ecn no	dr	date	title	
AB				RIB CAGE III SMT VERT. HEADER ASS'Y	
angles		linear	linear	INCH/MM	scale 1:1
0±z					
dr	M. CORNMAN	6/07/95		dwg no	sheet 5 of 6 size
engr	D. WHITING	6/07/95		95781	A3
chr	D. WHITING	6/07/95		type Product Customer Drawing	
appd	D. WHITING	6/07/95			
sheet	revision				
index	sheet				

PRODUCT NUMBER NOTE 11,4C	QTY. REEL	TAPE WIDTH PITCH MM	CONNECTOR ORIENTATION IN TAPE POCKET
72428-120TR	500	44/12	VIEW 1
73547-110TR		24/12	
84700-105TR		24/12	
84700-135TR		56/12	
87409-115TR		44/12	
87409-120TR		44/12	
87409-125TR		56/12	
87409-130TR		56/12	
87409-140TR		72/12	
87849-110TR		24/12	
87849-115TR		44/12	
87849-120TR		44/12	
87849-125TR		56/12	
87849-130TR	500	56/12	
88566-110TR	750	24/12	
88566-115TR	500	44/12	
88566-130TR	500	56/12	
90863-110		24/12	
90863-115		44/12	VIEW 1
90863-115REV		44/12	VIEW 2
90863-120		44/12	VIEW 1
90863-125		56/12	
90863-130		56/12	
91036-110P		24/16	
93206-115TR		44/12	
93221-105TR		24/12	
93221-110TR		32/12	
93221-125TR	500	56/12	VIEW 1

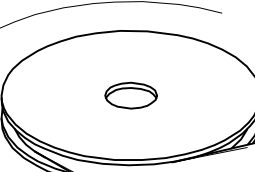
TABLE C

\* CUSTOMER SPECIAL  
NO VACUUM CAP

REFERENCE ONLY :

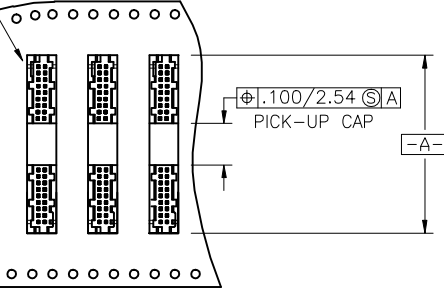
TAPE WIDTH 32mm AND ABOVE HAS BOTH FEED TRACKS,  
BELOW 32mm HAS TOP FEED TRACK ONLY.

UNREELING  
DIRECTION

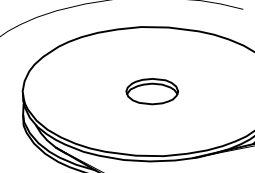


HEADER  
VIEW 1  
N.T.S.

POLARIZED  
KEYWAY



UNREELING  
DIRECTION



HEADER  
VIEW 2  
N.T.S.

POLARIZED  
KEYWAY

mat'l. code				surface	tolerance	projection	product family
SEE NOTES				ISO 1902	ISO 406		RIB CAGE
ISO 1101				tolerances unless otherwise specified	ISO 1101		title
ltr	ecn no	dr	date	linear	XX ±.01/XX±0.3	INCH/MM	RIB CAGE III SMT
AB				angles	XXX±.006/XX±0.13		scale 1:1
				σ±z	XXXX±.0020/XXX±0.051		dwg no
				dr	M. CORNMAN 6/07/95		sheet 6 of 6
				engr	D. WHITING 6/07/95		size
				chr	D. WHITING 6/07/95		A3
				appd	D. WHITING 6/07/95		type
sheet	revision						Product Customer Drawing
index	sheet						