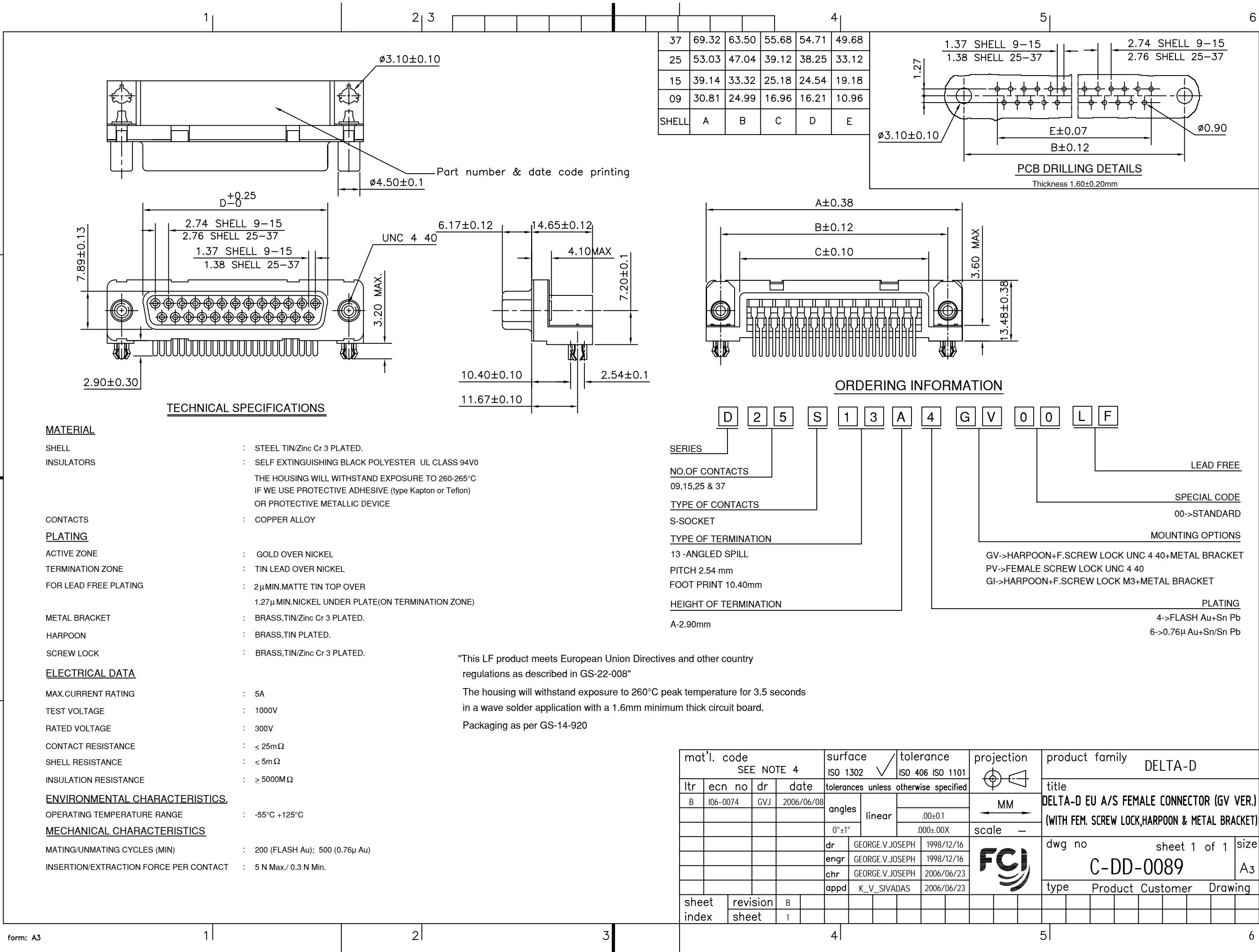


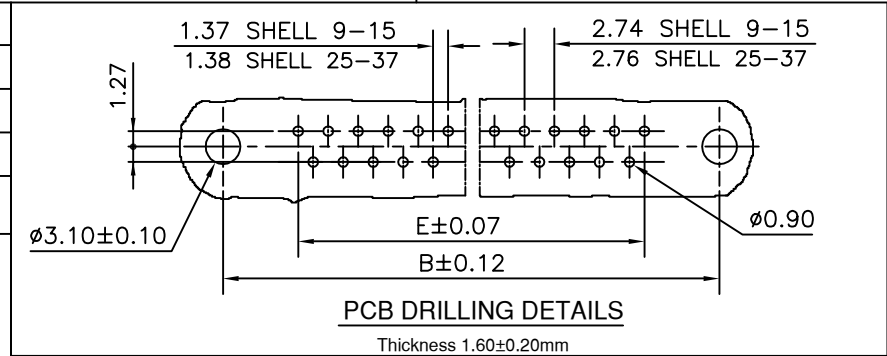


FCIconnect.com

Copyright FCI



37	69.32	63.50	55.68	54.71	49.68
25	53.03	47.04	39.12	38.25	33.12
15	39.14	33.32	25.18	24.54	19.18
09	30.81	24.99	16.96	16.21	10.96
SHELL	A	B	C	D	E



TECHNICAL SPECIFICATIONS

MATERIAL

- SHELL : STEEL TIN/Zinc Cr 3 PLATED.
- INSULATORS : SELF EXTINGUISHING BLACK POLYESTER UL CLASS 94V0
THE HOUSING WILL WITHSTAND EXPOSURE TO 260-265°C
IF WE USE PROTECTIVE ADHESIVE (type Kapton or Teflon)
OR PROTECTIVE METALLIC DEVICE
- CONTACTS : COPPER ALLOY
- PLATING : GOLD OVER NICKEL
- ACTIVE ZONE : GOLD OVER NICKEL
- TERMINATION ZONE : TIN LEAD OVER NICKEL
- FOR LEAD FREE PLATING : 2µMIN.MATTE TIN TOP OVER
1.27µMIN.NICKEL UNDER PLATE(ON TERMINATION ZONE)
- METAL BRACKET : BRASS,TIN/Zinc Cr 3 PLATED.
- HARPOON : BRASS,TIN PLATED.
- SCREW LOCK : BRASS,TIN/Zinc Cr 3 PLATED.

ELECTRICAL DATA

- MAX.CURRENT RATING : 5A
- TEST VOLTAGE : 1000V
- RATED VOLTAGE : 300V
- CONTACT RESISTANCE : ≤ 25mΩ
- SHELL RESISTANCE : ≤ 5mΩ
- INSULATION RESISTANCE : ≥ 5000MΩ

ENVIRONMENTAL CHARACTERISTICS

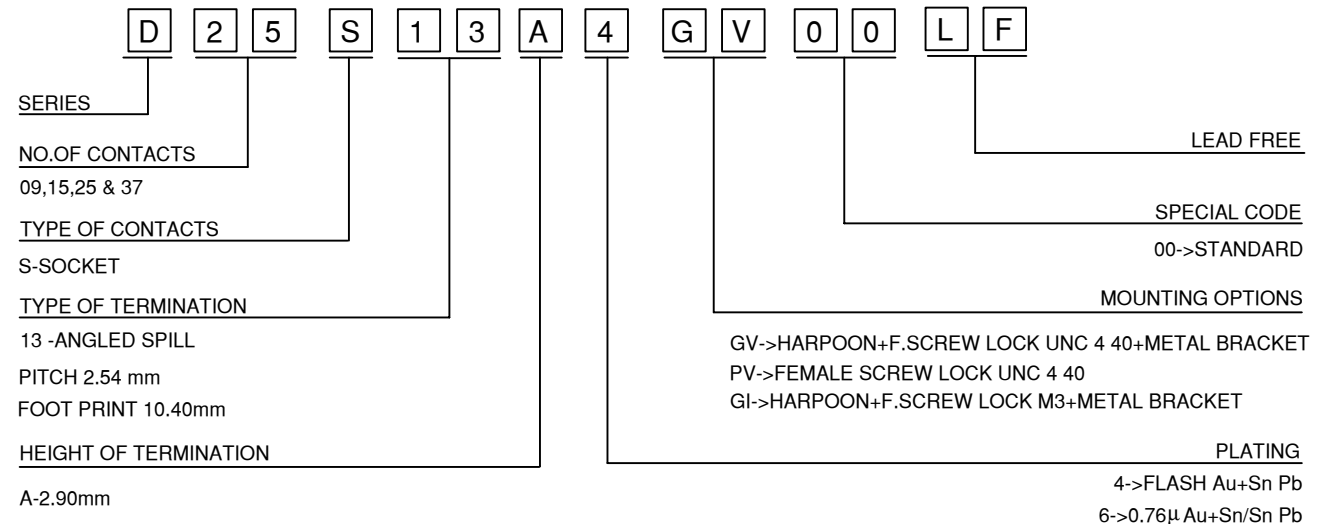
- OPERATING TEMPERATURE RANGE : -55°C +125°C

MECHANICAL CHARACTERISTICS

- MATING/UNMATING CYCLES (MIN) : 200 (FLASH Au); 500 (0.76µ Au)
- INSERTION/EXTRACTION FORCE PER CONTACT : 5 N Max./ 0.3 N Min.

"This LF product meets European Union Directives and other country regulations as described in GS-22-008"
The housing will withstand exposure to 260°C peak temperature for 3.5 seconds in a wave solder application with a 1.6mm minimum thick circuit board.
Packaging as per GS-14-920

ORDERING INFORMATION



mat'l. code		surface		tolerance		projection		product family	
SEE NOTE 4		ISO 1302		ISO 406 ISO 1101				DELTA-D	
litr		ecn no		dr		date		title	
B		106-0074		GVJ		2006/06/08		DELTA-D EU A/S FEMALE CONNECTOR (GV VER.) (WITH FEM. SCREW LOCK,HARPOON & METAL BRACKET)	
		angles		linear		.00±0.1		MM	
		0°±1°				.000±.00X		scale -	
		dr		GEORGE.V.JOSEPH		1998/12/16		dwg no	
		enrg		GEORGE.V.JOSEPH		1998/12/16		sheet 1 of 1	
		chr		GEORGE.V.JOSEPH		2006/06/23		size	
		appd		K_V_SIVADAS		2006/06/23		A3	
sheet index		revision		B				type	
		sheet		1				Product Customer Drawing	