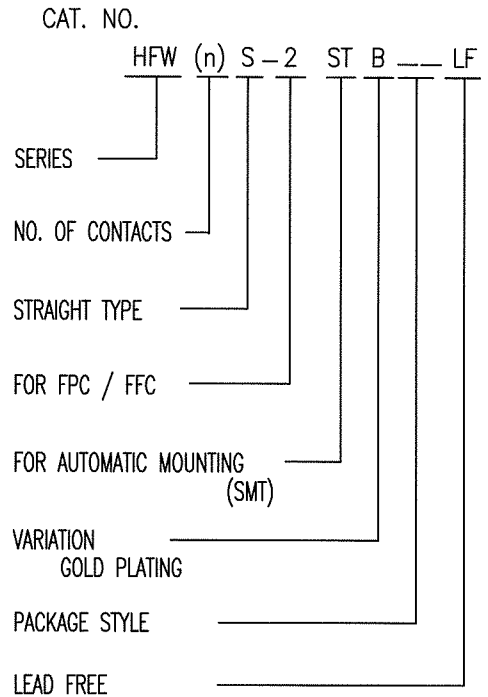


CAT. NO. & DIMENSIONS

(NOTE 3)	NO. OF CONTACTS (n)	CAT. NO.	DIMENSIONS (NOTE2)				
			A ± 0.2	B ± 0.2	C ± 0.2	D ± 0.2	E ± 0.2
	4	HFW4S-2STB__LF	7	5.14	3	—	—
	5	HFW5S-2STB__LF	8	6.14	4	—	—
	6	HFW6S-2STB__LF	9	7.14	5	—	—
	7	HFW7S-2STB__LF	10	8.14	6	—	—
	8	HFW8S-2STB__LF	11	9.14	7	—	—
	9	HFW9S-2STB__LF	12	10.14	8	0.35	7.3
	10	HFW10S-2STB__LF	13	11.14	9	0.35	8.3
	11	HFW11S-2STB__LF	14	12.14	10	1.35	7.3
	12	HFW12S-2STB__LF	15	13.14	11	1.35	8.3
	13	HFW13S-2STB__LF	16	14.14	12	2.35	7.3
	14	HFW14S-2STB__LF	17	15.14	13	2.35	8.3
	15	HFW15S-2STB__LF	18	16.14	14	3.35	7.3
	16	HFW16S-2STB__LF	19	17.14	15	3.35	8.3
	17	HFW17S-2STB__LF	20	18.14	16	4.35	7.3
	18	HFW18S-2STB__LF	21	19.14	17	4.35	8.3
	19	HFW19S-2STB__LF	22	20.14	18	5.35	7.3
	20	HFW20S-2STB__LF	23	21.14	19	5.35	8.3
	21	HFW21S-2STB__LF	24	22.14	20	6.35	7.3
	22	HFW22S-2STB__LF	25	23.14	21	6.35	8.3
	23	HFW23S-2STB__LF	26	24.14	22	7.35	7.3
	24	HFW24S-2STB__LF	27	25.14	23	7.35	8.3
	25	HFW25S-2STB__LF	28	26.14	24	8.35	7.3
	26	HFW26S-2STB__LF	29	27.14	25	8.35	8.3
	27	HFW27S-2STB__LF	30	28.14	26	9.35	7.3
	28	HFW28S-2STB__LF	31	29.14	27	9.35	8.3
	29	HFW29S-2STB__LF	32	30.14	28	10.35	7.3
	30	HFW30S-2STB__LF	33	31.14	29	10.35	8.3
*	31	HFW31S-2STB__LF	34	32.14	30	11.35	7.3
	32	HFW32S-2STB__LF	35	33.14	31	11.35	8.3
*	33	HFW33S-2STB__LF	36	34.14	32	12.35	7.3



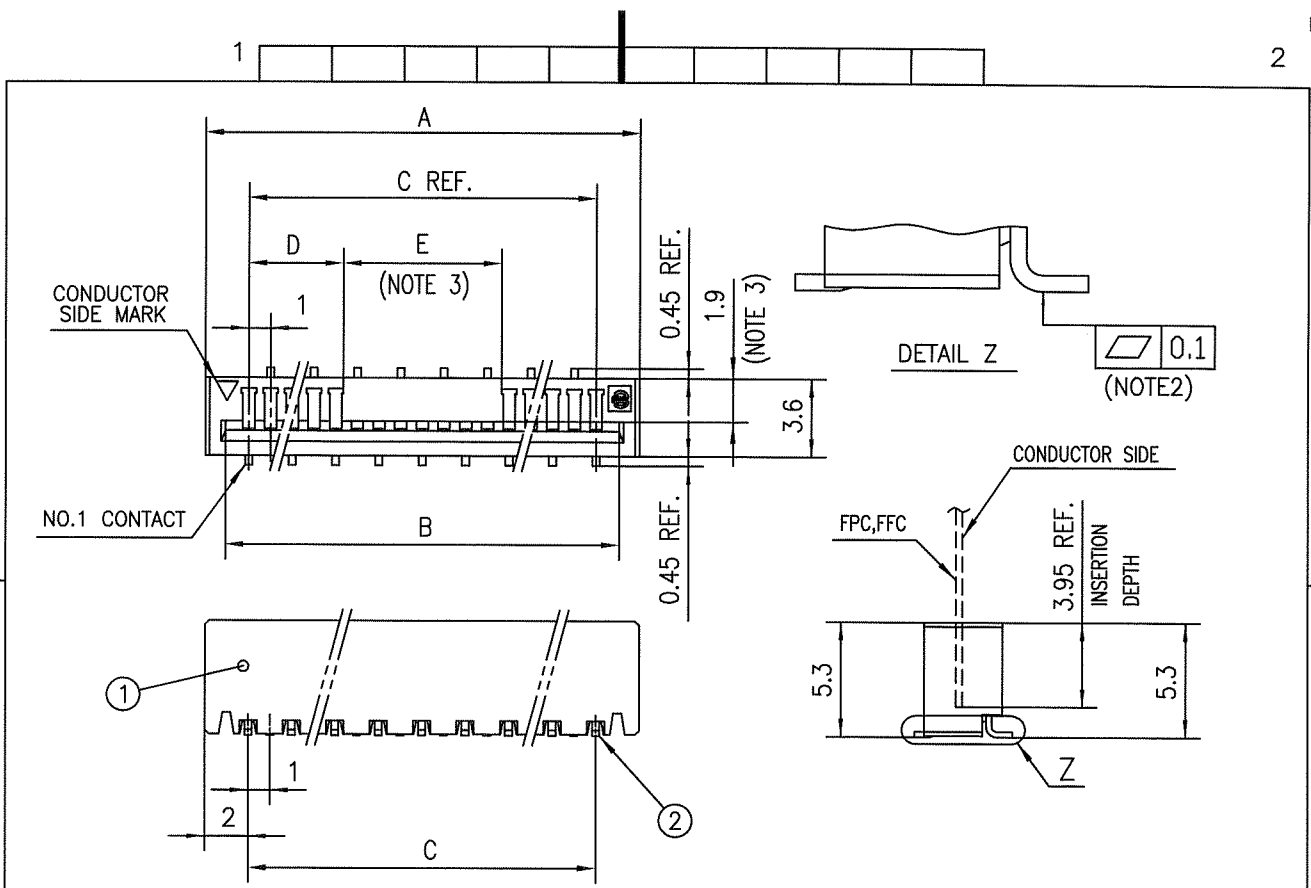
NOTES

1. THIS PRODUCT IS THE CONNECTOR DSIGNED TO TERMINATE FPC/FFC AND COPEs WITH AUTOMATIC MOUNTING (SMT).
2. SEE PART DRAWINGS FOR DIMENSIONS A~E.
3. PLEASE CONSULT US IN CASE OF USING PARTS WITH \* MARK.



Copyright FCI.

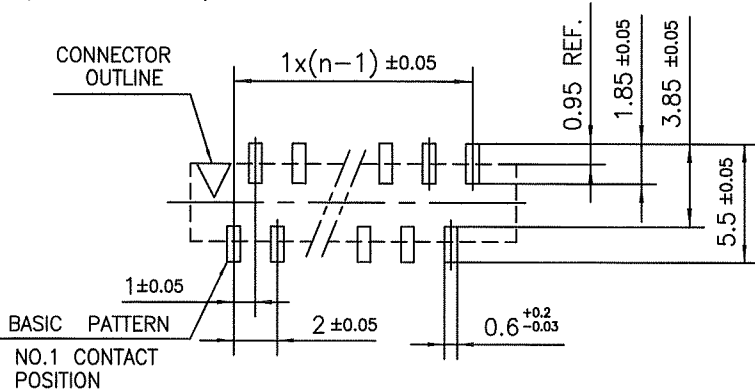
mat'l. code				surface <sup>58</sup> / tolerance ISO 1302 ✓ ISO 406 ISO 1101		projection		product family 580F		CODE JP	
ltr		ecn no		dr		date		title			
A		J07-0481		H.T		2007-9-26		CAT NO. TABLE FOR 1mm SPACING SMT CONNECTOR (CAT.No.HFW__S-2STB__LF)			
angles				linear		mm		scale X			
dr		engr		chr		appd		dwg no		sheet 1 of 1 size	
S. Rudan		2007-9-26		R. Shree		2007-9-26		JSA 97359		A4	
sheet index				revision		A		type Product Customer Drawing			
1				1				Rev A			



PT. NO.	PARTS NAME	MATERIAL	Q'TY	NOTE
1	HOUSING	PA6T RESIN GLASS REINFORCED (UL94V-0)	1	COLOR : BLACK
2	CONTACT	PHOSPHOR BRONZE	n	CONTACT POINT : GOLD TERMINAL POINT : TIN

n : NO. OF CONTACTS

**RECOMMENDED PC BOARD LAYOUT  
(COMPONENT SIDE)**



**NOTES**

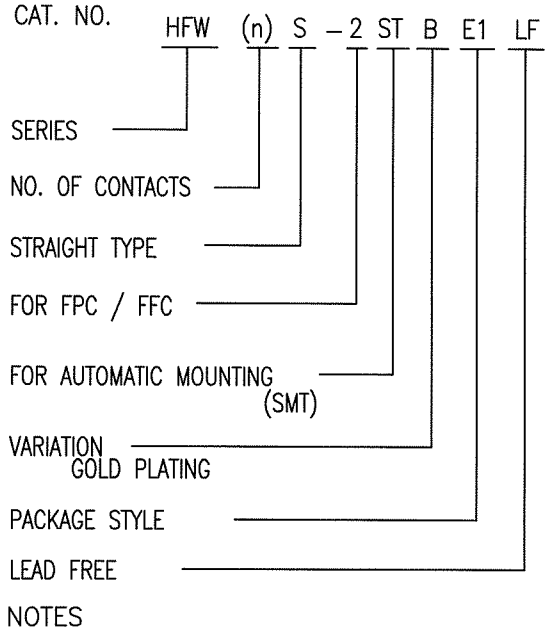
1. THIS PRODUCT IS THE CONNECTOR DESIGNED TO TERMINATE FPC/FFC AND COPES WITH AUTOMATIC MOUNTING (SMT).
2. FLATNESS OF CONTACT TERMINAL MUST BE WITHIN TOLERANCE IN Z PORTION DETAILED DRAWING.
3. THIS DIMENSION IS SPACE FOR THE NOZZLE OF MOUNTER.
4. THIS PRODUCT MEETS EUROPEAN UNION DIRECTIVES AND OTHER COUNTRY REGULATIONS AS DESCRIBED IN GS-22-008
5. THE HOUSING WILL WITHSTAND EXPOSURE TO 260°C PEAK TEMPERATURE FOR 10 SECONDS IN A REFLOW SOLDERING OVEN.

mat'l. code		surface 58 / tolerance ISO 1302 ✓ / ISO 406 / ISO 1101		projection		product family 580F		CODE JP	
ltr	ecn no	dr	date	tolerances unless otherwise specified		title		1mm SPACING SURFACE MOUNT FPC/FFC CONNECTOR (CAT.No.HFW__S-2STB__LF)	
A	J07-0481	H.T.	2007-9-26	angles	linear ±0.2	mm		dwg no JSA 97360	
				dr	<i>H. Saito</i> 2007-9-26	scale X		sheet 1 of 1 size A4	
				enr	<i>H. Saito</i> 2007-9-26	FCI		type Product Customer Drawing	
				chr	<i>R. Brown</i> 2007-9-26				
				app	<i>S. Nakamura</i> 2007-9-26				
sheet index		revision A							
sheet 1									

SC-HFWS06 JSA97359 form: A4

CAT. NO. & DIMENSIONS

(NOTE.4)	NO. OF CONTACTS (n)	CAT. NO. (NOTE2)	DIMENSIONS (NOTE3)		
			F ± 5	G ± 0.3	H ± 0.1
	4	HFW4S-2STBE1LF	28.4	24	—
	5	HFW5S-2STBE1LF	28.4	24	—
	6	HFW6S-2STBE1LF	28.4	24	—
	7	HFW7S-2STBE1LF	28.4	24	—
	8	HFW8S-2STBE1LF	28.4	24	—
	9	HFW9S-2STBE1LF	28.4	24	—
	10	HFW10S-2STBE1LF	28.4	24	—
	11	HFW11S-2STBE1LF	28.4	24	—
	12	HFW12S-2STBE1LF	28.4	24	—
	13	HFW13S-2STBE1LF	28.4	24	—
	14	HFW14S-2STBE1LF	36.4	32	28.4
	15	HFW15S-2STBE1LF	36.4	32	28.4
	16	HFW16S-2STBE1LF	36.4	32	28.4
	17	HFW17S-2STBE1LF	36.4	32	28.4
	18	HFW18S-2STBE1LF	48.4	44	40.4
	19	HFW19S-2STBE1LF	48.4	44	40.4
	20	HFW20S-2STBE1LF	48.4	44	40.4
	21	HFW21S-2STBE1LF	48.4	44	40.4
	22	HFW22S-2STBE1LF	48.4	44	40.4
	23	HFW23S-2STBE1LF	48.4	44	40.4
	24	HFW24S-2STBE1LF	48.4	44	40.4
	25	HFW25S-2STBE1LF	48.4	44	40.4
	26	HFW26S-2STBE1LF	48.4	44	40.4
	27	HFW27S-2STBE1LF	48.4	44	40.4
	28	HFW28S-2STBE1LF	48.4	44	40.4
	29	HFW29S-2STBE1LF	60.4	56	52.4
	30	HFW30S-2STBE1LF	60.4	56	52.4
*	31	HFW31S-2STBE1LF	60.4	56	52.4
	32	HFW32S-2STBE1LF	60.4	56	52.4
*	33	HFW33S-2STBE1LF	60.4	56	52.4

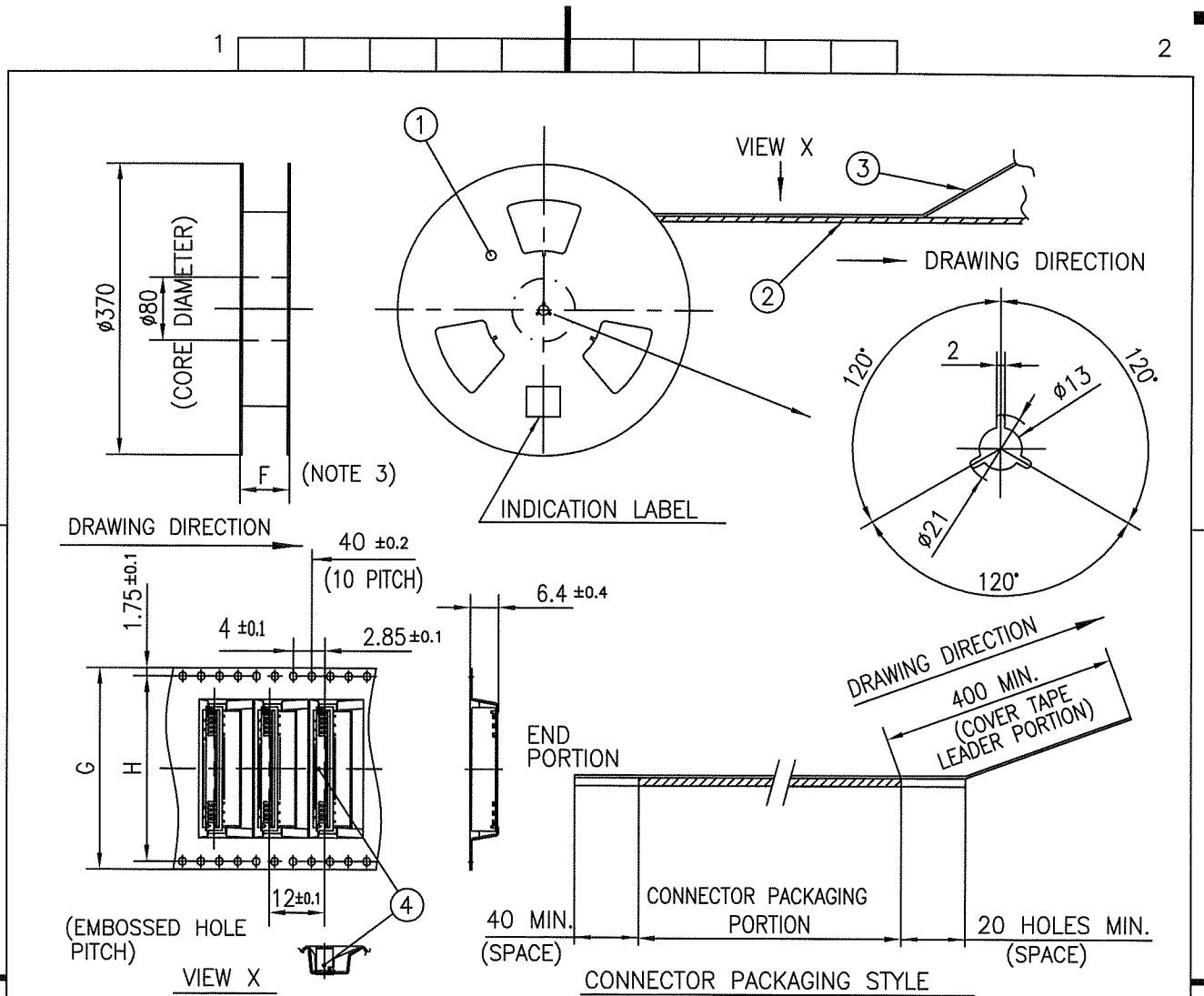


1. THIS PRODUCT IS THE CONNECTOR DESIGNED TO TERMINATE FPC/FFC AND COPES WITH AUTOMATIC MOUNTING (SMT).
2. THIS CATALOG NO. INDICATES PLASTIC TAPE PACKAGED CONNECTOR.
3. SEE PART DRAWINGS FOR DIMENSIONS F~H.
4. PLEASE CONSULT US IN CASE OF USING PARTS WITH \* MARK.



Copyright FCI.

mat'l. code				surface 58 / tolerance ISO 1302 ✓ / ISO 406 / ISO 1101		projection		product family 580F		CODE JP		
ltr	ecn no	dr	date	tolerances unless otherwise specified		mm		title				
A	J07-0481	H.T	2007-9-26	angles	linear	scale $\times$		CAT. NO. TABLE FOR PLASTIC TAPE PACKAGED 1mm SPACING SMT CONN. (CAT.No.HFW__S-2STBE1LF)				
				dr	<i>K. Takahashi</i>	2007-9-26		dwg no		sheet 1 of 1 size		
				enr	<i>K. Takahashi</i>	2007-9-26		JSA 97361		A4		
				chr	<i>R. S. Toriji</i>	2007-9-26		type Product Customer Drawing				
				appd	<i>C. Madhavan</i>	2007-9-26						
sheet index	revision	A	sheet	1								Rev. A



PT. NO.	PARTS NAME	CAT. NO.	MATERIAL	Q'TY	NOTE
1	REEL	_____	CARDBOARD	1	COLOR:GRAY
2	PLASTIC (EMBOSSED) TAPE	_____	PET	_____	COLOR:TRANSPARENCY
3	COVER	_____	POLYESTER	_____	COLOR:TRANSPARENCY
4	CONNECTOR	HFW__S-2STB__LF	SEE ATTACHED DWG.	1000	_____

NOTES

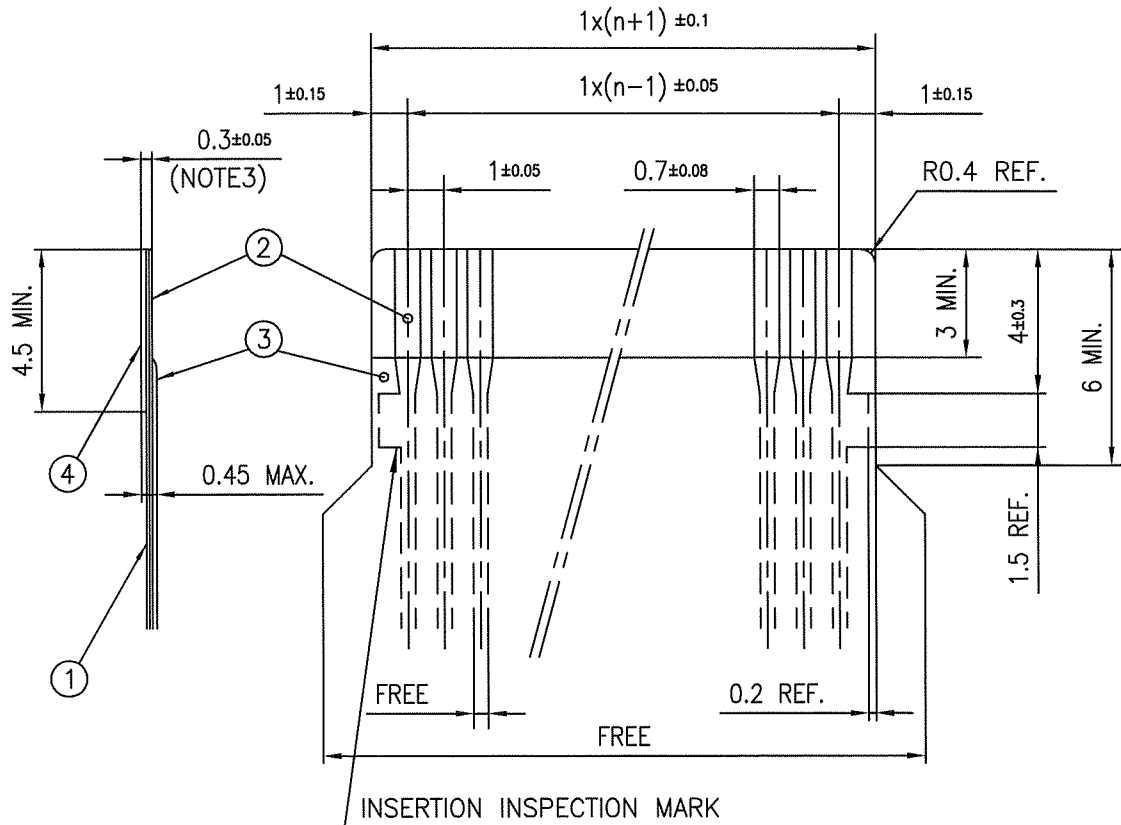
- THIS IS PLASTIC TAPE PACKAGED CONNECTOR USED FOR FPC/FFC AND COPES WITH AUTOMATIC MOUNTING (SMT).
- SEE JIS C 0806 (PACKING OF ELECTRONIC COMPONENTS ON CONTINUOUS TAPES (SURFACE MOUNTING DEVICES)) FOR SHAPE AND DIMENSIONS OF PLASTIC (EMBOSSED) TAPE AND REEL.
- F DIMENSION IS PORTION OF THE CORE.

mat'l. code		surface 58 / tolerance ISO 1302 ✓ / ISO 406 / ISO 1101		projection		product family 580F		CODE JP	
ltr	ecn no	dr	date	tolerances unless otherwise specified		title		PLASTIC TAPE PACKAGED 1mm SPACING SMT CONNECTOR (CAT.No.HFW__S-2STBE1LF)	
A	J07-0481	H.T	2007-9-26	angles	linear ±5	mm		dwg no	
				±5'		scale X		sheet 1 of 1 size A4	
		dr	2007-9-26	engr		JSA 97362		type Product Customer Drawing	
		chr	2007-9-26	appd		S. Andou		Rev. A	
sheet index	revision	A	1						

SC-HFWS06 JSA97359 97361 form: A4

RECOMMENDED CABLE (FPC)

n : NO. OF CONDUCTORS



PT. NO.	DISCRIPTION	MATERIAL	THICKNESS (μm)
1	BASE FILM	POLYIMIDE OR POLYESTER OR EQUIVALENT	25
2	CONDUCTOR	COPPER FOIL (PLATING : GOLD.)	35
3	OVERLAY	POLYIMIDE OR POLYESTER OR EQUIVALENT	—
4	SUPPORTING TAPE	POLYESTER OR POLYIMIDE OR EQUIVALENT	188

NOTES

1. NO BURR AT EACH PORTION.
2. NO PEELING IN COMMON USE.
3. TOTAL THICKNESS LIMIT OF EACH MATERIAL (INCLUDING ADHESIVE AGENT) IS SPECIFIED.

mat'l. code		surface 58 / tolerance ISO 1302 ✓ / ISO 406 / ISO 1101		projection		product family 580F		CODE JP	
ltr	ecn no	dr	date	tolerances unless otherwise specified		title		sheet 1 of 1	
A	J07-0481	H.T	2007-9-26	angles	linear	RECOMMENDED CABLE (CAT.No.HFW__S-2STB__)		size A4	
				dr	2007-9-26	dwg no		sheet 1 of 1	
				enr	2007-9-26	JSA 97363		size A4	
				chr	2007-9-26	type		Product Customer Drawing	
				app	2007-9-26				
sheet index	revision sheet	A	1					Rev A	