

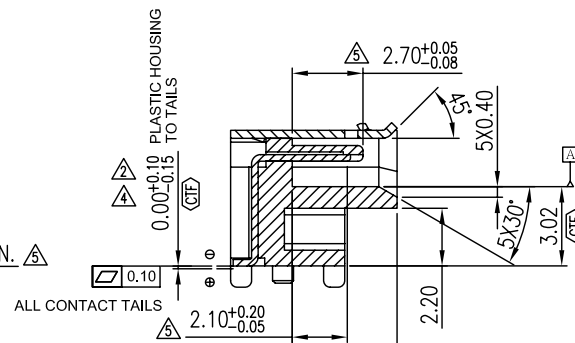
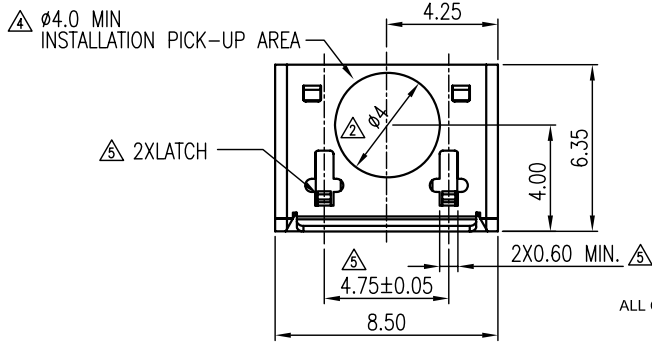
This document is the property of Amphenol Corporation and is delivered on the express condition that is not to be disclosed, reproduced or used, in whole or in part, for manufacture or sale by anyone other than Amphenol Corporation without its prior consent, and that no right is granted to disclose or to use any information in this document.
The marking on this product doesn't contain environmental hazardous materials per Material Specification SS-00259 for Sony GP compliant or per directive 2002/95/EC for RoHS compliant.



ORIGINAL

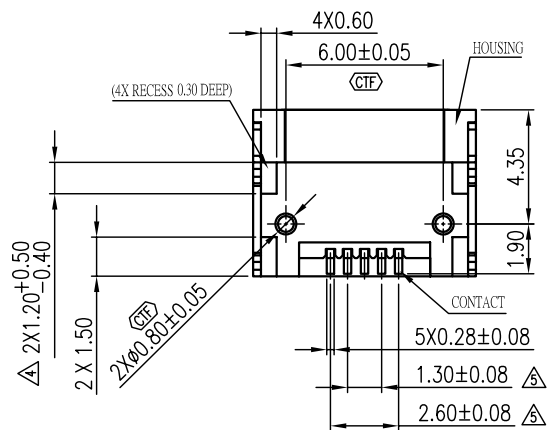
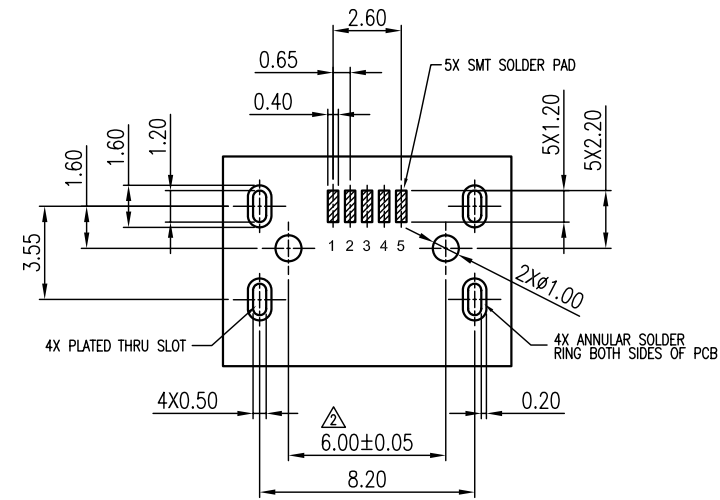
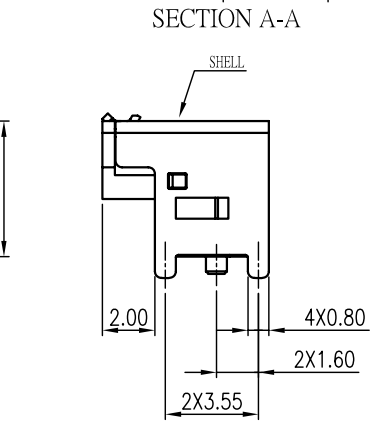
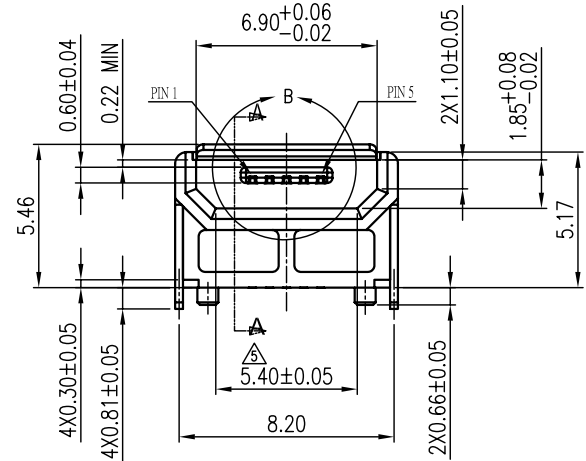


REVISIONS				
SYM	ECN No.	DESCRIPTION	DATE	APPROVED
A		RELEASE TO PRODUCTION	03/11/2009	Hank Hsu
B	NE-09107	ADD DIM	06/23/2009	Arron Lin
C	NE-09147	MODIFIED PK LABEL	08/18/2009	Arron Lin



NOTE: UNLESS OTHERWISE SPECIFIED

- MATERIAL:
HOUSING: LCP GLASS FILLED, UL94V-0, COLOR BLACK
SHELL: STAINLESS STEEL SUS301, THICKNESS = 0.30 mm.
CONTACT: COPPER ALLOY, THICKNESS = 0.15 mm.
- FINISH:
CONTACT:
CONTACT AREA: 0.00076mm (0.000030") GOLD
TAIL AREA: 0.00381mm (0.000150") TIN MINIMUM
UNDER PLATE: 0.001270mm (0.000050") NICKEL MINIMUM
SHELL: NICKEL PLATING
- INSERTION AND EXTRACTION FORCE SPECIFICATIONS AS TESTED IN ACCORDANCE WITH EIA 364-13:
INSERTION: 35 N MAXIMUM FORCE
8 N MINIMUM FORCE AFTER 5,000 INSERTION/EXTRACTION CYCLES
EXTRACTION: 10 N MINIMUM FORCE INITIAL
- CONNECTOR MUST BE RoHS COMPLIANT.
- CONNECTOR MUST COMPLY WITH THE UNIVERSAL SERIAL BUS SPECIFICATION REVISION 2.0.
- FINISHED PART SHALL CONFORM TO ENVIRONMENTAL GUIDE LINES FOR MATERIAL AND COMPONENTS PER WDC SPECIFICATION 2096-001669.
- CONNECTORS TO BE PACKAGED IN TAPE AND REEL.
- THE INDICATED INSTALLATION PICK-UP AREA TO BE FREE OF HOLES, PROTRUSIONS, AND RECESSED FEATURES.
- CRITICAL DIMENSION (CTF) SHOULD BE CONTROLLED BY SPC
- PACKING: PLEASE REFER TO PKS-GMCB05001



RECOMMENDED PCB LAYOUT
COMPONENT SIDE SHOWN
TOLERANCES ARE ±0.05 UNLESS OTHERWISE SPECIFIED

TOLERANCE	APPROVALS	DATE	TITLE	Amphenol® Amphenol Corporation Amphenol Taiwan Corporation			
X.	DRAWN Daniel Hsieh	08/18/2009	MICRO USB RECEPTABLE SMT R/A HI-RISE	UNIT mm	SIZE A3	PART No. GMCB05821124EU	REV. C
X.X	CHECKED Roger Tsai	08/18/2009					
X.XX	APPROVED Arron Lin	08/18/2009	UNLESS OTHERWISE SPECIFIED	SCALE NA	SHEET 1 OF 2	DWG No. GMCB05821124EU	REV. C
X.XXX	DWG TYPE CUST DWG	PROJECT CODE OTHER					

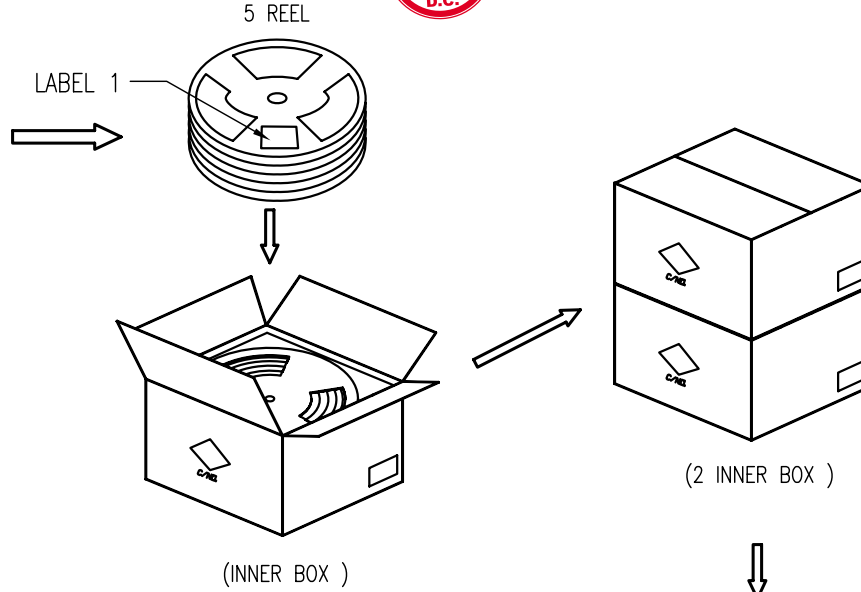
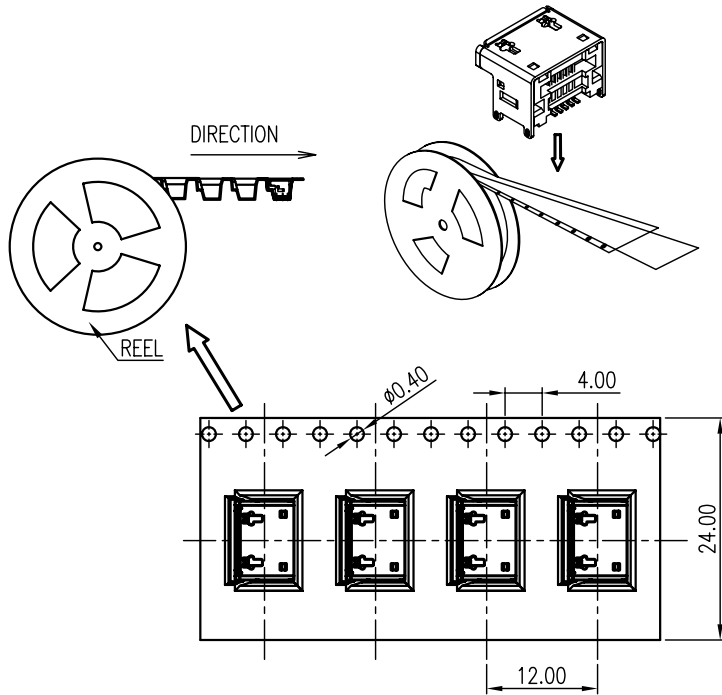
This document is the property of Amphenol Corporation and is delivered on the express condition that is not to be disclosed, reproduced or used, in whole or in part, for manufacture or sale by anyone other than Amphenol Corporation without its prior consent, and that no right is granted to disclose or to use any information in this document.
 The marking on this product doesn't contain environmental hazardous materials per Material Specification SS-00259 for Sony GP compliant or per directive 2002/95/EC for RoHS compliant.



ORIGINAL

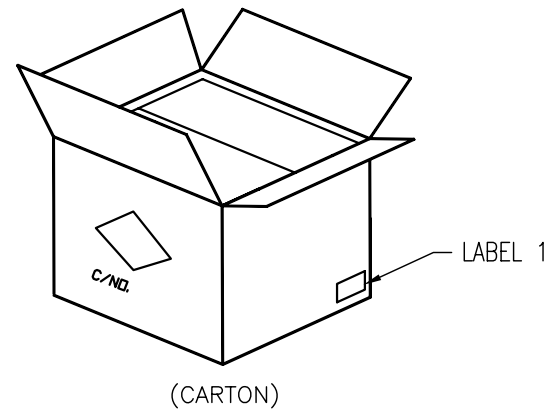


REVISIONS				
SYM	ECN No.	DESCRIPTION	DATE	APPROVED
A		RELEASE TO PRODUCTION	03/11/2009	Hank Hsu
B	NE-09107	ADD DIM	06/23/2009	Arron Lin
C	NE-09147	MODIFIED PK LABEL	08/18/2009	Arron Lin



LABEL 1

Amphenol East Asia Electronic Technology(Shen Zhen)Co.,Ltd.
 NXX 4041-705037-000 B YYYYMMDD
 (P) CUST PROD ID: 4041-705037-000
 (Q) QUANTITY: 440 (T) DATECODE: YYYYMMDD
 (1T) LOT CODE: XXXXXX
 (1P) Amphenol P/N : GMCB05821124EU
RoHS
HF



Code: 39 OR 128

TOLERANCE	APPROVALS	DATE	TITLE		Amphenol® Amphenol Corporation Amphenol Taiwan Corporation			
X. ±0.30 X.X ±0.13 X.XX ±0.10	DRAWN Daniel Hsieh CHECKED Roger Tsai	08/18/2009	MICRO USB RECEPTABLE MICRO FOR GMCB05821124EU		PART No. PKS-GMCB05001		REV. C	
ANGULAR ±1°	APPROVED Arron Lin	08/18/2009	UNIT mm	SIZE A3	DWG No. PKS-GMCB05001			
UNLESS OTHERWISE SPECIFIED	DWG TYPE CUST DWG	PROJECT CODE OTHER	SCALE NA	SHEET 2 OF 2				