

**SPECIFICATIONS**

**HDMI Connector**

**Mechanical**

**Mating Force:** initial 4.5kgf max.  
**Unmating Force:** initial 1.0~4.0kgf  
**Durability:** 10000 cycles.

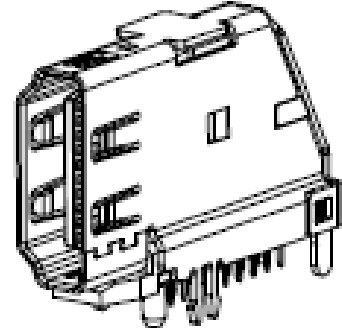
**Electrical**

**Voltage Rating:** 40V AC  
**Current Rating:** 0.5A min.  
**Contact Resistance:** Initial excluding conductor resistance  
 10mΩ max.  
**Dielectric Withstanding Voltage:** 500V AC (Rms.)  
**Insulation Resistance:** Unmated plug 100MΩ min. at 500V DC.

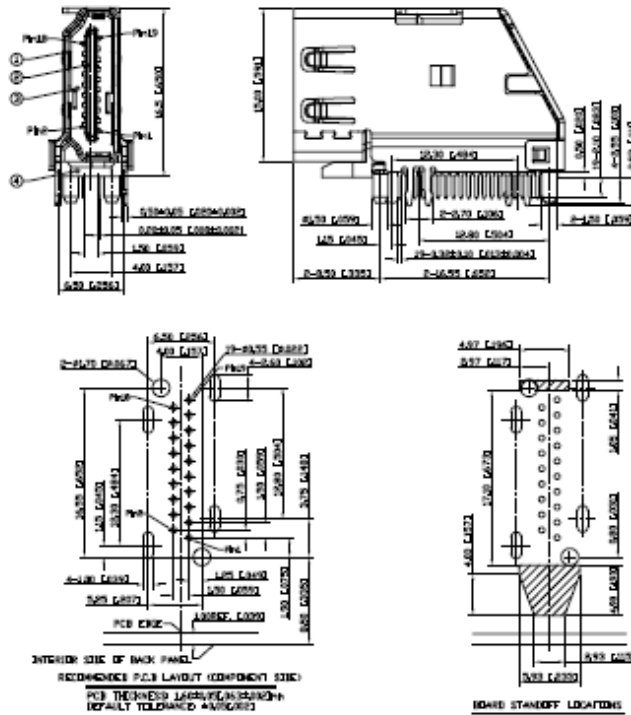
**Physical**

**Housing:** Thermoplastic, UL 94V-0 rated in black Color  
**Contact:** Copper alloy  
**Plating:** See "ORDERING INFORMATION"  
**Solder Pad:** Copper alloy  
**Operating Temperature:** -40°C to +85°C

**HDMI Receptacle Series**  
**Right Angle, T/H Type**  
**0.75mm [.030"] Pitch**  
**19 Pos.**



**DRAWING**



**ORDERING INFORMATION**

