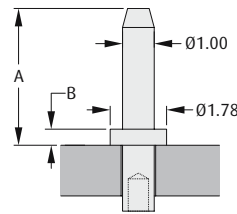
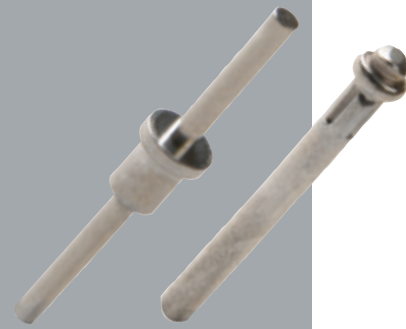


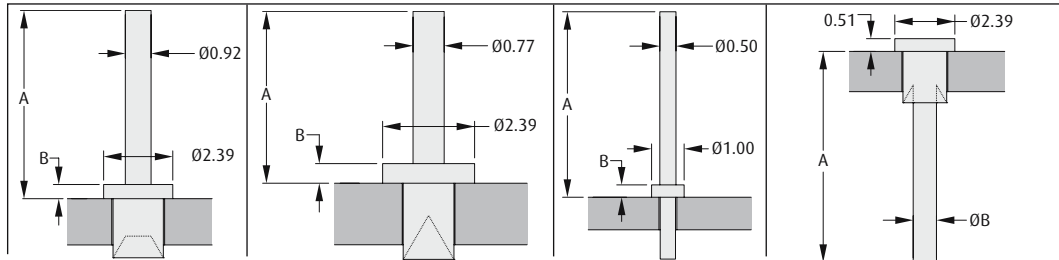
PCB Terminals

Turned Terminals

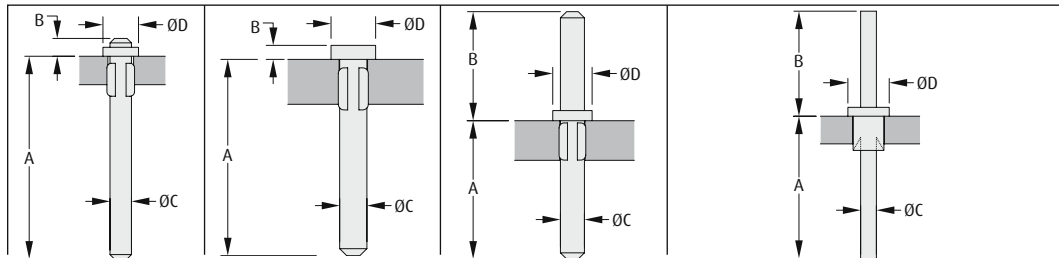
- Material: brass with tin plating.
- Retention by swaging or "star" feature available.
- For swaging tool, change order code prefix to Z, and suffix to 00 (example Z2174-00).
- Suitable for a variety of PCB thicknesses from 1mm to 2.4mm.



ORDER CODE	H2174-01	H2175-01	H2173-01	H2176-01	H2170-01
A	4.32mm	4.90mm	8.13mm	9.53mm	13.21mm
B	0.51mm	0.35mm	0.51mm	0.51mm	0.51mm
PANEL THICKNESS	1.6mm	1.6mm	1.6mm	1.6mm	1.6mm
MOUNTING HOLE Ø	Ø1.04-1.14mm	Ø1.04-1.14mm	Ø1.04-1.14mm	Ø1.04-1.14mm	Ø1.04-1.14mm



ORDER CODE	H2101A01	H2105A01	H2106A01	H3108-01	H2101B01	H2105B01
A	6.47mm	4.47mm	4.47mm	5.70mm	8.39mm	6.37mm
B	0.51mm	0.51mm	0.51mm	0.38mm	Ø0.93mm	Ø0.77mm
PANEL THICKNESS	1.6mm	1.6mm	2.4mm	1.0mm	1.6mm	1.6mm
MOUNTING HOLE Ø	Ø1.79-1.87mm	Ø1.33-1.41mm	Ø1.33-1.41mm	Ø0.50-0.55mm	Ø1.79-1.87mm	Ø1.33-1.41mm



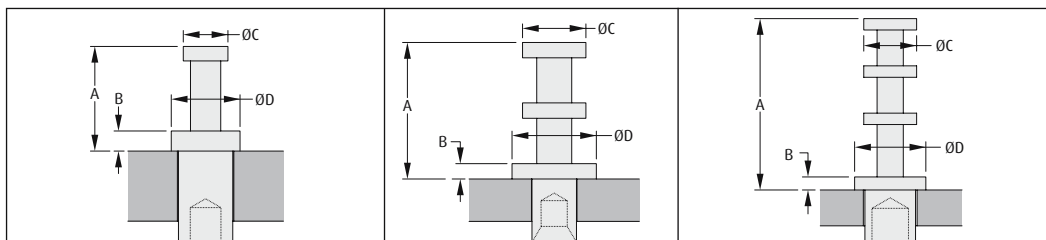
ORDER CODE	H2157-01	H3150-01	H3151-01	H2101-01	H2105-01
A	11.40mm	7.00mm	5.59mm	8.23mm	5.05mm
B	1.00mm	0.50mm	4.41mm	6.07mm	4.48mm
C	Ø1.21mm	Ø0.97mm	Ø0.93mm	Ø0.87mm	Ø0.77mm
D	Ø2.00mm	Ø1.59mm	Ø1.59mm	Ø2.39mm	Ø2.39mm
PANEL THICKNESS	1.6mm min	1.6mm min	1.6mm min	1.6mm	1.6mm
MOUNTING HOLE Ø	Ø1.40-1.50mm	Ø0.99-1.04mm	Ø0.99-1.04mm	Ø1.79-1.87mm	Ø1.33-1.41mm

All dimensions in mm.

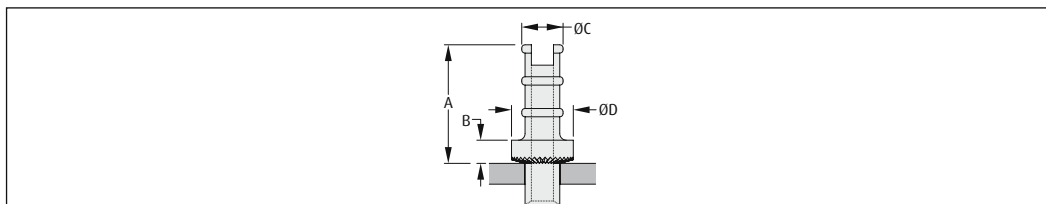
PCB Terminals

Turned Terminals

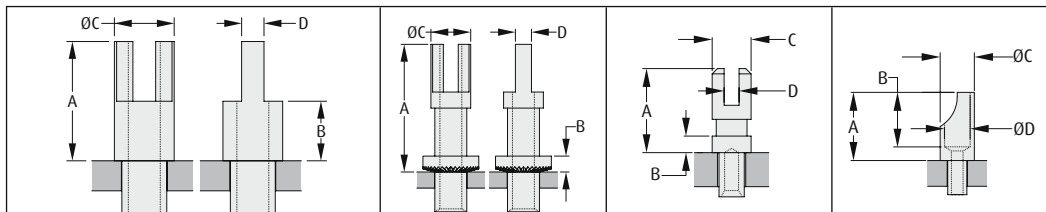
- Material: brass with tin plating.
- Retention by swaging or "star" feature available.
- For swaging tool, change order code prefix to Z, and suffix to 00 (example Z9001-00).
- Suitable for a variety of PCB thicknesses from 1.6mm to 3.2mm.



ORDER CODE	H9001-01	H9004-01	H2121-01	H9020-01	H9021-01
A	2.39mm	4.74mm	5.15mm	7.65mm	7.65mm
B	0.46mm	1.19mm	0.58mm	0.58mm	0.58mm
C	Ø1.02mm	Ø1.91mm	Ø2.39mm	Ø2.36mm	Ø2.36mm
D	Ø1.57mm	Ø3.18mm	Ø3.18mm	Ø3.18mm	Ø3.18mm
PANEL THICKNESS	1.6mm	1.6mm	1.6mm	1.6mm	2.4mm
MOUNTING HOLE Ø	Ø1.25-1.33mm	Ø2.01-2.09mm	Ø1.69-1.74mm	Ø2.35-2.45mm	Ø2.35-2.45mm



ORDER CODE	H2071Z01	H2072-01	H2072Z01	H2072ZL1	H2073Z01	H2074Z01
A	9.12mm	6.29mm	6.52mm	6.52mm	9.12mm	8.74mm
B	1.78mm	1.01mm	1.24mm	1.24mm	1.78mm	1.60mm
C	Ø3.18mm	Ø3.25mm	Ø2.54mm	Ø2.54mm	Ø3.18mm	Ø4.57mm
D	Ø4.75mm	Ø3.96mm	Ø3.96mm	Ø3.96mm	Ø4.75mm	Ø6.35mm
PANEL THICKNESS	2.4mm	1.6mm	1.6mm	2.4mm	3.2mm	3.2mm
MOUNTING HOLE Ø	Ø2.68-2.78mm	Ø2.17-2.27mm	Ø2.01-2.11mm	Ø2.01-2.11mm	Ø2.68-2.78mm	Ø3.93-4.03mm



ORDER CODE	H2051-01	H2055-01	H2039-01	H9023-01	H9026-01
A	4.78mm	6.35mm	12.65mm	3.96mm	6.35mm
B	2.39mm	3.17mm	1.52mm	0.78mm	5.08mm
C	Ø3.18mm	Ø3.18mm	Ø3.90mm	Ø1.83mm	Ø3.18mm
D	Ø0.73mm	Ø1.13mm	Ø1.54mm	Ø0.71mm	Ø2.39mm
THROUGH HOLE Ø	Ø1.06mm	Ø1.74mm	Ø2.22mm	n/a	Ø1.13mm
PANEL THICKNESS	1.6mm	2.4mm	3.2mm	1.6mm	2.4mm
MOUNTING HOLE Ø	Ø1.60-1.68mm	Ø2.40-2.48mm	Ø3.19-3.27mm	Ø1.28-1.38mm	Ø1.84-1.92mm

All dimensions in mm.