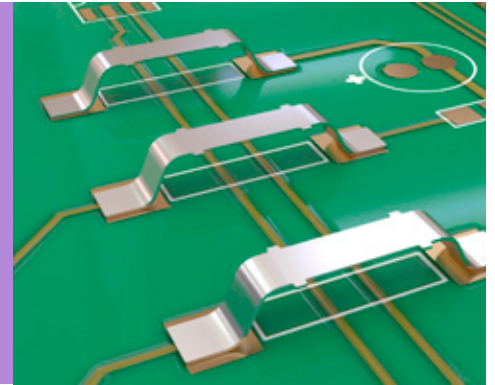


# SMT Jumper Link

- Designed to link PCB tracks where through hole links are not possible.
- Typical applications include use on aluminium backplanes in power applications.
- High current.
- Small footprint.
- Low profile options available for space saving design.



SPECIFICATION	12.3mm LONG																				
<p><b>➤ Materials</b></p> <p>Material: Copper Alloy (S1621, S1911) Copper (S1731)</p> <p>Finish: See Order Code</p> <p><b>➤ Packaging</b></p> <p>Packaging format: Tape &amp; Reel or Loose</p> <p>Reel quantity: S1621: 5,000 on a Ø330mm reel S1731: 2,500 on a Ø330mm reel S1911: 4,000 on a Ø330mm reel</p>	<p style="text-align: center;">Recommended PC Board Pattern</p>																				
<p><b>6.86mm LONG, 2.54mm HIGH</b></p> <p style="text-align: center;">Recommended PC Board Pattern</p>	<p><b>6.85mm LONG, 0.97mm HIGH</b></p> <p style="text-align: center;">Recommended PC Board Pattern</p>																				
<b>HOW TO ORDER</b>																					
<p style="text-align: center;"><b>S1 XX 1 - 46 R</b></p> <table border="1" data-bbox="162 1617 341 1680"> <tr> <td><b>SERIES CODE</b></td> <td></td> </tr> </table> <table border="1" data-bbox="162 1701 552 1869"> <thead> <tr> <th colspan="2">TYPE</th> </tr> </thead> <tbody> <tr> <td><b>62</b></td> <td>12.3mm long</td> </tr> <tr> <td><b>73</b></td> <td>6.86mm long, 2.54mm high</td> </tr> <tr> <td><b>91</b></td> <td>6.85mm long, 0.97mm high</td> </tr> </tbody> </table> <table border="1" data-bbox="1153 1596 1445 1722"> <thead> <tr> <th colspan="2">PACKAGING</th> </tr> </thead> <tbody> <tr> <td><b>R</b></td> <td>Tape &amp; Reeled</td> </tr> <tr> <td><b>Blank</b></td> <td>Loose</td> </tr> </tbody> </table> <table border="1" data-bbox="1153 1743 1445 1827"> <thead> <tr> <th colspan="2">FINISH</th> </tr> </thead> <tbody> <tr> <td><b>46</b></td> <td>Tin </td> </tr> </tbody> </table>		<b>SERIES CODE</b>		TYPE		<b>62</b>	12.3mm long	<b>73</b>	6.86mm long, 2.54mm high	<b>91</b>	6.85mm long, 0.97mm high	PACKAGING		<b>R</b>	Tape & Reeled	<b>Blank</b>	Loose	FINISH		<b>46</b>	Tin
<b>SERIES CODE</b>																					
TYPE																					
<b>62</b>	12.3mm long																				
<b>73</b>	6.86mm long, 2.54mm high																				
<b>91</b>	6.85mm long, 0.97mm high																				
PACKAGING																					
<b>R</b>	Tape & Reeled																				
<b>Blank</b>	Loose																				
FINISH																					
<b>46</b>	Tin																				

All dimensions in mm.

EZ-BOARDWARE