

**PLEASE CHECK WWW.MOLEX.COM FOR LATEST PART INFORMATION**

**Part Number:** [0705450038](#)  
**Status:** **Active**  
**Overview:** [SL™ Modular Connectors](#)  
**Description:** 2.54mm Pitch SL™ Header, Single Row 3.05mm Pocket Vertical, Shrouded, with Press-fit Plastic Peg, 4 Circuits, 0.38µm Gold (Au) Selective Plating, Tin (Sn) PC Tail Plating

**Documents:**

|  |  |
|--|--|
| <a href="#">3D Model</a>                             | <a href="#">Test Summary TS-70541-001 (PDF)</a>      |
| <a href="#">Drawing (PDF)</a>                        | <a href="#">Test Summary TS-70541-100 (PDF)</a>      |
| <a href="#">Product Specification PS-70400 (PDF)</a> | <a href="#">RoHS Certificate of Compliance (PDF)</a> |
| <a href="#">Product Specification PS-70541 (PDF)</a> |  |

**Agency Certification**

|     |         |
|-----|---------|
| CSA | LR19980 |
| UL  | E29179  |

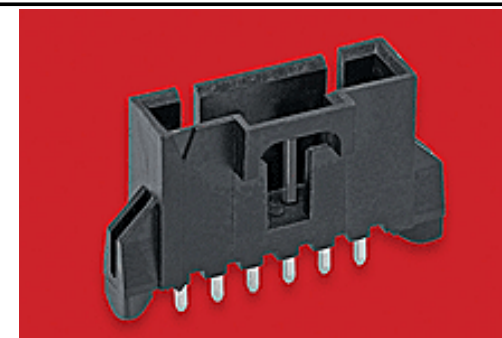
**General**

|                |  |
|----------------|--|
| Product Family | PCB Headers                            |
| Series         | <a href="#">70545</a>                  |
| Application    | Signal, Wire-to-Board                  |
| Overview       | <a href="#">SL™ Modular Connectors</a> |
| Product Name   | SL™                                    |
| UPC            | 800753597662                           |

**Physical**

|                                |                                |
|--------------------------------|--------------------------------|
| Breakaway                      | No                             |
| Circuits (Loaded)              | 4                              |
| Circuits (maximum)             | 4                              |
| Color - Resin                  | Black                          |
| Durability (mating cycles max) | 50                             |
| Flammability                   | 94V-0                          |
| Glow-Wire Compliant            | No                             |
| Lock to Mating Part            | Yes                            |
| Material - Metal               | Brass, Phosphor Bronze         |
| Material - Plating Mating      | Gold                           |
| Material - Plating Termination | Tin                            |
| Material - Resin               | High Temperature Thermoplastic |
| Net Weight                     | 0.879/g                        |
| Number of Rows                 | 1                              |
| Orientation                    | Vertical                       |
| PC Tail Length                 | 3.30mm                         |
| PCB Locator                    | Yes                            |
| PCB Retention                  | Yes                            |
| PCB Thickness - Recommended    | 1.60mm                         |
| Packaging Type                 | Tube                           |
| Pitch - Mating Interface       | 2.54mm                         |
| Plating min - Mating           | 0.381µm                        |
| Plating min - Termination      | 1.905µm                        |
| Polarized to Mating Part       | Yes                            |
| Shrouded                       | Fully                          |
| Stackable                      | No                             |
| Surface Mount Compatible (SMC) | Yes                            |
| Temperature Range - Operating  | -40°C to +105°C                |
| Termination Interface: Style   | Through Hole                   |

**Electrical**



Series image - Reference only

**EU ELV**

**Not Relevant**

**EU RoHS**

**Compliant**

**REACH SVHC**

Contains SVHC(2015 June 15): No

**Halogen-Free**

**Status**

**Not Low-Halogen**

**Need more information on product environmental compliance?**

Email [productcompliance@molex.com](mailto:productcompliance@molex.com)  
Please visit the [Contact Us](#) section for any non-product compliance questions.

China ROHS

ELV

Green Image

Not Relevant

**Search Parts in this Series**

[70545](#) Series

**Mates With**

SL™ Crimp Housing [70066](#) Option N, [70066](#) Option G, [70066](#) Option A, [70430](#) Option G, [70400](#) Option G

|                               |      |
|-------------------------------|------|
| Current - Maximum per Contact | 3.0A |
| Voltage - Maximum             | 250V |

**Solder Process Data**

|  |      |
|--|------|
| Duration at Max. Process Temperature (seconds) | 003  |
| Lead-free Process Capability                   | WAVE |
| Max. Cycles at Max. Process Temperature        | 003  |
| Process Temperature max. C                     | 260  |

**Material Info**

|                 |              |
|-----------------|--------------|
| Old Part Number | A-70545-0038 |
|-----------------|--------------|

**Reference - Drawing Numbers**

|                       |                            |
|-----------------------|----------------------------|
| Product Specification | PS-70400, PS-70541         |
| Sales Drawing         | SDA-70545-****             |
| Test Summary          | TS-70541-001, TS-70541-100 |

This document was generated on 08/26/2015

**PLEASE CHECK [WWW.MOLEX.COM](http://WWW.MOLEX.COM) FOR LATEST PART INFORMATION**