

**PLEASE CHECK WWW.MOLEX.COM FOR LATEST PART INFORMATION**

**Part Number:** [0878325622](#)

**Status:** **Active**

**Overview:** [Milli-Grid™ Connector System](#)

**Description:** Milli-Grid™ Header, Surface Mount, Vertical, Shrouded, Lead-Free, 14 Circuits, 0.38µm Gold (Au) Plating, with Pick-and-Place Cap, with Side and Center Windows, with Center Polarization Slot, with PCB Locator, Embossed Tape on

**Documents:**

[3D Model](#)

[Drawing \(PDF\)](#)

[Product Specification PS-87831-027 \(PDF\)](#)

[RoHS Certificate of Compliance \(PDF\)](#)

**Agency Certification**

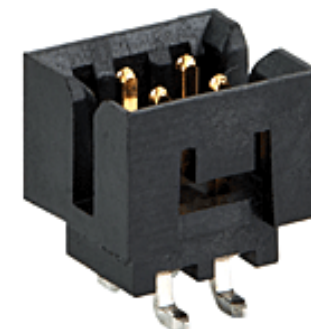
CSA LR19980  
UL E29179

**General**

Product Family PCB Headers  
Series [87832](#)  
Application Signal, Wire-to-Board  
Comments With Cap|Contact Molex for application in automotive industry  
Overview [Milli-Grid™ Connector System](#)  
Product Name Milli-Grid™  
UPC 822348271450

**Physical**

Breakaway No  
Circuits (Loaded) 14  
Circuits (maximum) 14  
Color - Resin Black  
Durability (mating cycles max) 100  
First Mate / Last Break No  
Flammability 94V-0  
Glow-Wire Compliant No  
Guide to Mating Part No  
Keying to Mating Part Yes  
Lock to Mating Part Yes  
Material - Metal Phosphor Bronze  
Material - Plating Mating Gold  
Material - Plating Termination Tin  
Material - Resin Nylon  
Net Weight 0.671/g  
Number of Rows 2  
Orientation Vertical  
PCB Locator No  
PCB Retention None  
Packaging Type Embossed Tape on Reel  
Pitch - Mating Interface 2.00mm  
Pitch - Termination Interface 2.00mm  
Plating min - Mating 0.381µm  
Plating min - Termination 1.905µm  
Polarized to PCB No  
Robotic Placement Pick and Place Cap  
Shrouded Fully  
Stackable No  
Surface Mount Compatible (SMC) Yes  
Temperature Range - Operating -55°C to +105°C



*Series image - Reference only*

**EU ELV**

**Not Relevant**

**EU RoHS**

**Compliant**

**REACH SVHC**

No -ED/39/2015 (15 June 2015)

**Halogen-Free**

**Status**

**Not Low-Halogen**

**Need more information on product environmental compliance?**

Email [productcompliance@molex.com](mailto:productcompliance@molex.com)  
Please visit the [Contact Us](#) section for any non-product compliance questions.

China ROHS

ELV

Green Image

Not Relevant

**Search Parts in this Series**

[87832](#) Series

**Mates With**

Milli-Grid™ Vertical Through Hole Receptacle [79107](#) , [78787](#) , Milli-Grid™ Flex-to-Board Vertical Receptacle [79108](#) , Milli-Grid™ Vertical Surface Mount Receptacle [79109](#) , [78788](#) , Milli-Grid™ Crimp Housing [51110](#) , Milli-Grid™ Cable-to-Board Receptacle [87568](#)

Termination Interface: Style Surface Mount

**Electrical**

Current - Maximum per Contact 2.0A  
Voltage - Maximum 125V

**Solder Process Data**

Duration at Max. Process Temperature (seconds) 010  
Lead-free Process Capability REFLOW  
Max. Cycles at Max. Process Temperature 001  
Process Temperature max. C 260

**Material Info**

**Reference - Drawing Numbers**

Product Specification PS-87831-027  
Sales Drawing SD-87832-0001

This document was generated on 01/12/2016

**PLEASE CHECK [WWW.MOLEX.COM](http://WWW.MOLEX.COM) FOR LATEST PART INFORMATION**