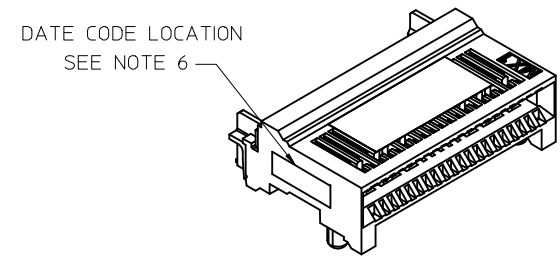


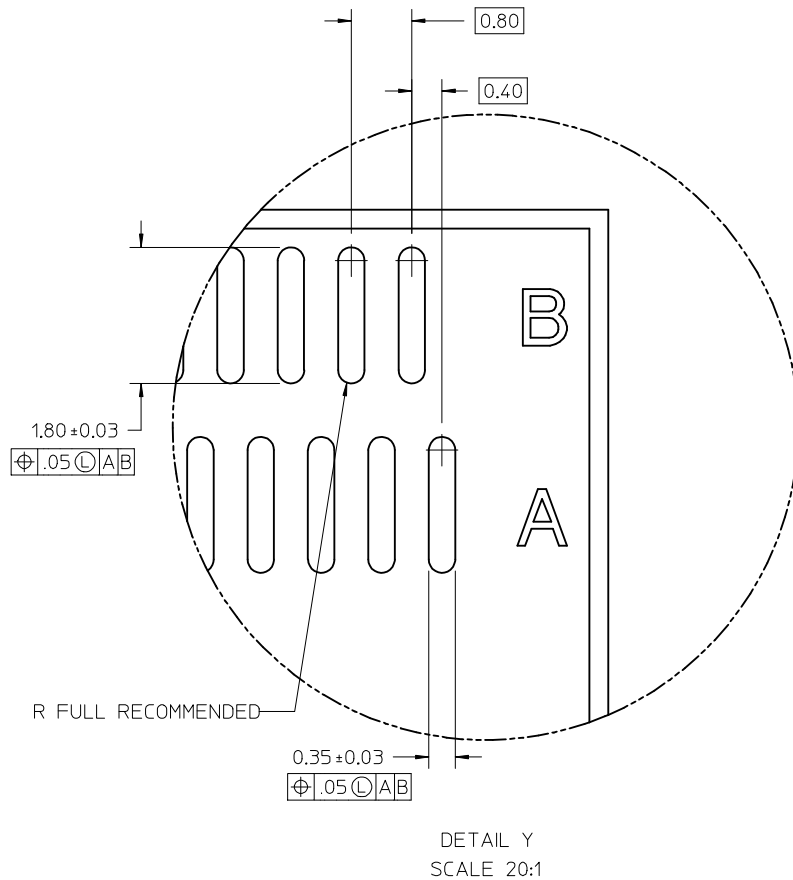
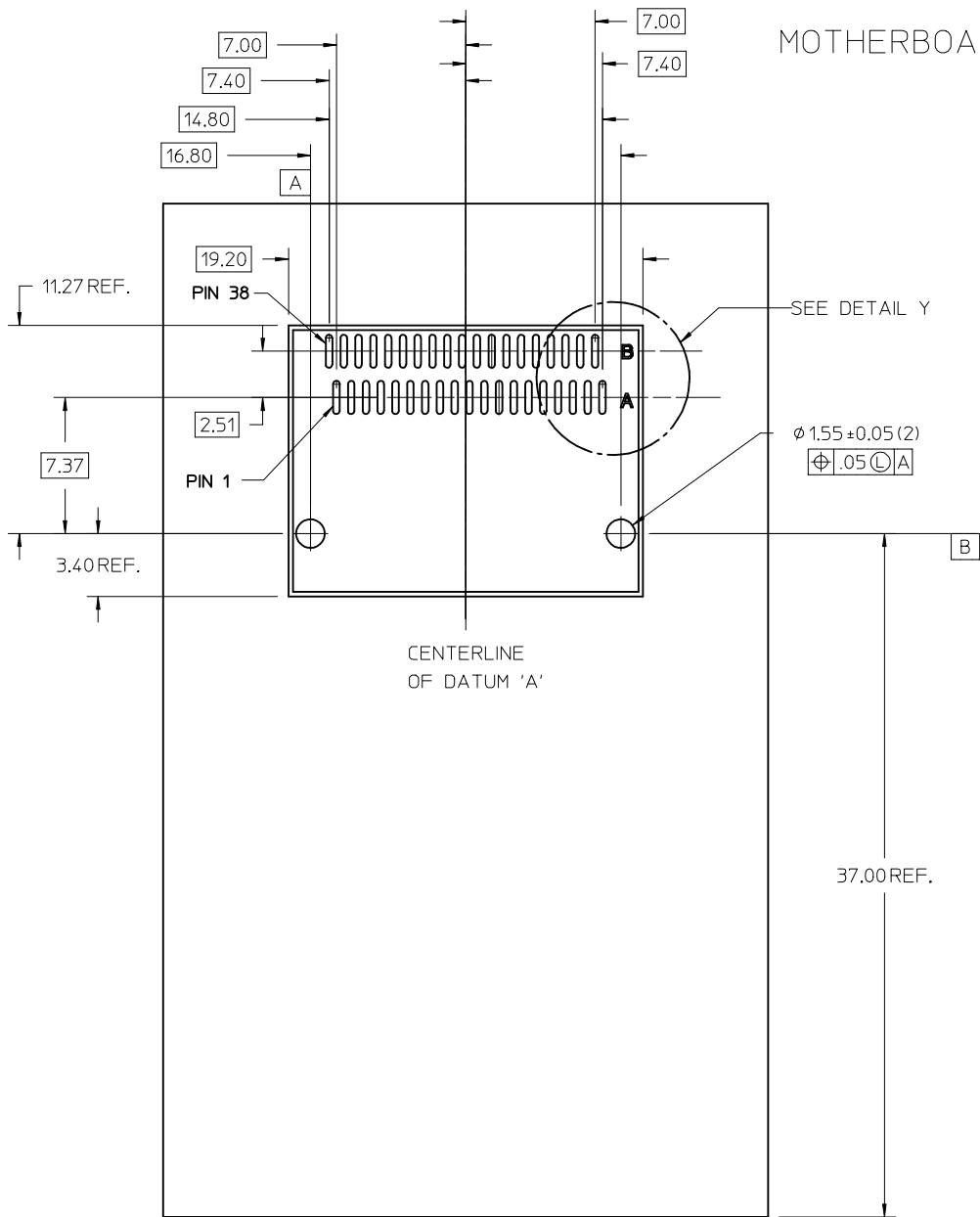
- NOTES
- MATERIAL:  
HOUSING - HIGH TEMPERATURE THERMOPLASTIC GLASS FILLED,  
UL 94V-0, BLACK  
TERMINALS - COPPER ALLOY
  - PLATING:  
CONTACT AREA - 0.38 μm MIN GOLD OVER 2.54 μm MIN NICKEL  
SOLDER FOOT AREA - 2.54 - 5.09 μm TIN OVER 2.54 μm MAX NICKEL.
  - PLATING:  
CONTACT AREA - 0.76 μm MIN GOLD OVER 2.54 μm MIN NICKEL  
SOLDER AREA - 2.54 - 5.09 μm TIN OVER 2.54 μm MAX NICKEL
  - PLATING:  
CONTACT AREA - 0.76 μm MIN GOLD OVER 2.54 μm MIN NICKEL,  
SOLDER AREA: GOLD FLASH OVER 2.54 μm MAX NICKEL.
  - TERMINAL SOLDER FEET TO BE COPLANAR WITHIN 0.10/0.04 MEASURED FROM  
FRONT HOUSING STAND OFF (DATUM E)
  - DATE CODE: 4 DIGIT (3 DIGIT DATE, 1 DIGIT YEAR)
  - CIRCUIT IDENTIFIER: SEE APPROPRIATE INDUSTRY SPECIFICATION FOR  
LOCATION OF PIN 1
  - PACKAGED PER PACKAGING SPECIFICATION: PK-170432-900
  - CONFORMS TO PRODUCT SPECIFICATION: PS-170432-001
  - THIS PART CONFORMS TO CLASS C REQUIREMENTS OF COSMETIC  
SPECIFICATION PS-45499-002.



PART NUMBER	DESCRIPTION
170432-0001	PLATED PER NOTE 2
170432-0002	PLATED PER NOTE 3
170432-0003	PLATED PER NOTE 4

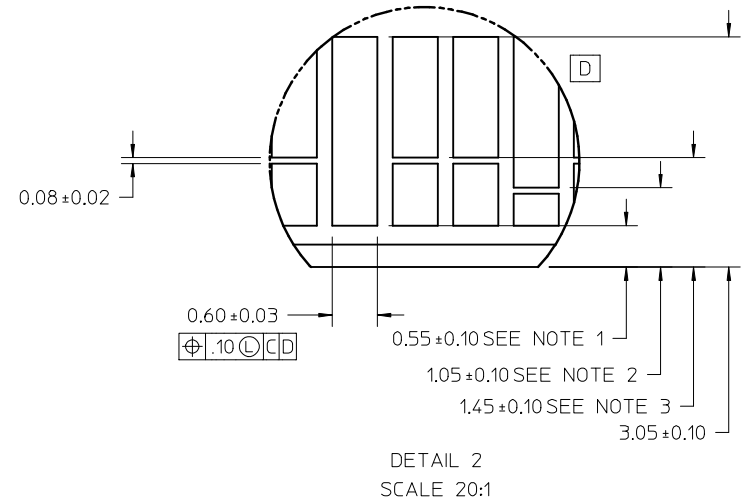
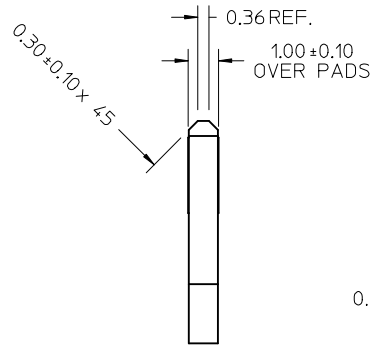
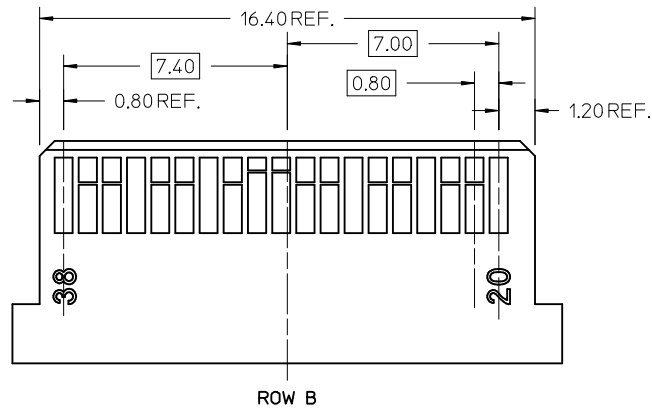
REVISED EC NO: UCP2012-4044 DRWNG: JANTELEZ10 2014/05/09 CHKD: APPR: MBANAKIS 2014/05/121	QUALITY SYMBOLS	GENERAL TOLERANCES (UNLESS SPECIFIED)	DIMENSION STYLE <b>MM ONLY</b>	SCALE <b>4:1</b>	DESIGN UNITS <b>METRIC</b>	THIRD ANGLE PROJECTION
	▽=0	mm INCH	DRAWN BY DATE JGONZALEZ01 2010/05/06	TITLE <b>ASSEMBLY ZQSFP+ 38 CIRCUIT</b>		
	▽=0	4 PLACES ± --- ± ---	CHECKED BY DATE JJANTELEZ10 2010/05/06	APPROVED BY DATE MBANAKIS 2011/11/04		
	▽=0	3 PLACES ± --- ± --- 2 PLACES ± 0.25 ± --- 1 PLACE ± 0.38 ± ---	APPROVED BY DATE MBANAKIS 2011/11/04	MATERIAL NO. DOCUMENT NO. <b>SEE CHART SD-170432-002</b>		
ANGULAR ± 1/2°		DRAFT WHERE APPLICABLE MUST REMAIN WITHIN DIMENSIONS	SIZE C	SHEET NO. 1 OF 3		
THIS DRAWING CONTAINS INFORMATION THAT IS PROPRIETARY TO MOLEX INCORPORATED AND SHOULD NOT BE USED WITHOUT WRITTEN PERMISSION						

# MOTHERBOARD FOOTPRINT RECOMMENDATION

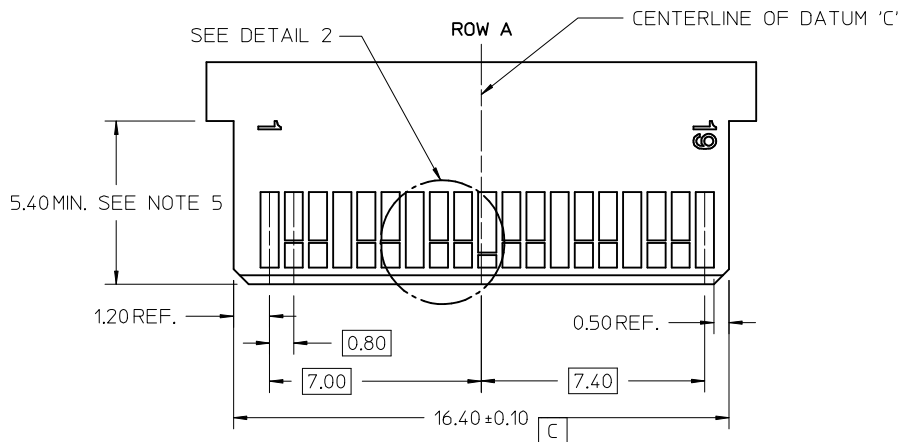


SEE SHEET 1 EC NO: UCP2012-4044 DRAWN: J JANTELEZ10 2010/05/09 CHKD: APPR: MBANAKIS 2011/05/21	QUALITY SYMBOLS	GENERAL TOLERANCES (UNLESS SPECIFIED)	DIMENSION STYLE	SCALE	DESIGN UNITS	THIRD ANGLE PROJECTION
	▽=0	mm INCH	MM ONLY	5:1	METRIC	
	▽=0	4 PLACES ± --- ± ---	DRAWN BY DATE	TITLE		
	▽=0	3 PLACES ± --- ± ---	JGONZALEZ01 2010/05/06	ASSEMBLY ZQSFP+ 38 CIRCUIT		
	2 PLACES ± 0.25 ± ---	CHECKED BY DATE	MOLEX INCORPORATED MEX			
	1 PLACE ± 0.38 ± ---	JJANTELEZ10 2010/05/06				
	ANGULAR ± 1/2°	APPROVED BY DATE	MATERIAL NO. SD-170432-002 DOCUMENT NO.			
		MBANAKIS 2011/11/04	SHEET NO. 2 OF 3			
			DRAFT WHERE APPLICABLE MUST REMAIN WITHIN DIMENSIONS SEE SHEET 1 THIS DRAWING CONTAINS INFORMATION THAT IS PROPRIETARY TO MOLEX INCORPORATED AND SHOULD NOT BE USED WITHOUT WRITTEN PERMISSION			

# MODULE BOARD FOOTPRINT RECOMMENDATION



DETAIL 2  
SCALE 20:1



NOTES:

- PAD CONFIGURATION FOR FIRST MATE.
- PAD CONFIGURATION FOR SECOND MATE.
- PAD CONFIGURATION FOR THIRD MATE (HIGH SPEED SIGNALS).
- FOR PIN ASSIGNMENTS AND MATING SEQUENCE (1ST, 2ND, 3RD). SEE APPLICABLE SPECIFICATION.
- MINIMUM STEP REQUIRED IF PCB MADE WIDER THAN CARD TOUNGE.

SEE SHEET 1 EC NO: UCP2012-4044 DRWN: JANTELEZIO 2014/05/09 CHKD: MBANAKIS APPR: MBANAKIS 2014/05/21	DESCRIPTION QUALITY SYMBOLS ▽=0 ▽=0 ▽=0	GENERAL TOLERANCES (UNLESS SPECIFIED)		DIMENSION STYLE <b>MM ONLY</b>		SCALE <b>8:1</b>	DESIGN UNITS <b>METRIC</b>	THIRD ANGLE PROJECTION		
				DRAWN BY JGONZALEZ01	DATE 2010/05/06	TITLE <b>ASSEMBLY ZQSFP+ 38 CIRCUIT</b>				
				CHECKED BY JJANTELEZIO	DATE 2010/05/06	MOLEX INCORPORATED DOCUMENT NO. <b>SD-170432-002</b>				
				APPROVED BY MBANAKIS	DATE 2011/11/04					
		ANGULAR ±1/2°		SEE SHEET 1		THIS DRAWING CONTAINS INFORMATION THAT IS PROPRIETARY TO MOLEX INCORPORATED AND SHOULD NOT BE USED WITHOUT WRITTEN PERMISSION				
		DRAFT WHERE APPLICABLE MUST REMAIN WITHIN DIMENSIONS								