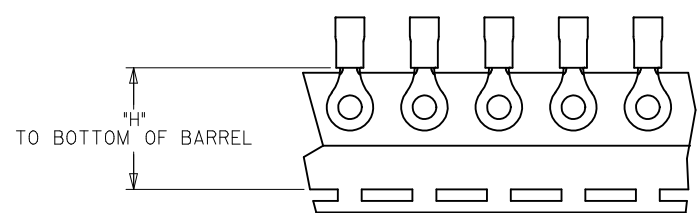
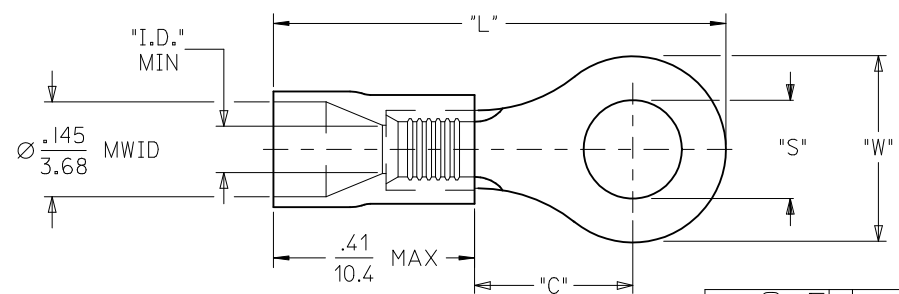


10		9		8		7		6		5		4		3		2		19070	
LOOSE PIECE				TAPE MOUNTED				SPECIFICATIONS											
MATERIAL NUMBER	ALTERNATE NUMBER	MATERIAL NUMBER	ALTERNATE NUMBER	HOUSING COLOR	STUD SIZE	"S" ±.005/(0.13)	"W" MAX.	"C" MIN.	"L" MAX.	"ID" MIN.	STOCK THICKNESS REFERENCE	"H" ±.020/-.051							
F	190700005	AA-220-02X	190700006	AA-220-02XT	RED	2	.094/(2.39)	.235/(6.00)	.157/(3.99)	.709/(18.01)	.062/(1.57)	.028/(0.71)							
	190700007	AA-220-04X	190700008	AA-220-04XT	RED	4	.119/(3.02)												
	190700009	AA-220-06X	190700010	AA-220-06XT	RED	6	.146/(3.71)												
	190700011	AA-221-06X	190700012	AA-221-06XT	RED	6	.146/(3.71)												
	190700013	AA-221-08X	190700014	AA-221-08XT	RED	8	.173/(4.39)												
	190700015	AA-221-10X	190700017	AA-221-10XT	RED	10	.198/(5.03)												
	190700019	AA-221-209X	190700020	AA-221-209XT	RED	M5	.209/(5.18)	.322/(8.18)	.270/(6.86)	.866/(22.00)	.062/(1.57)	.028/(0.71)							
E	190700021	AA-222-10X	190700022	AA-222-10T	RED	10	.198/(5.03)												
	190700023	AA-222-14X	190700024	AA-222-14XT	RED	14	.265/(6.73)												
	-	-	190700601 (C2)	AA-222-14XT-BK	BLACK	14	.265/(6.73)												
	190700026	AA-222-56X	190700027	AA-222-56XT	RED	5/16"	.328/(8.33)												
	190700029	AA-226-10X	190700030	AA-226-10XT	RED	10	.198/(5.03)						.544/(13.82)	.552/(14.02)	1.259/(31.98)	.055/(1.40)	.031/(0.79)		
	190700031	AA-226-14X	190700032	AA-226-14XT	RED	14	.265/(6.73)												
	190700036	AA-226-56X	190700037	AA-226-56XT	RED	5/16"	.328/(8.33)												
D	190700033	AA-226-38X	190700035	AA-226-38XT	RED	3/8"	.390/(9.91)												
	190700038	AA-232-04X	190700039	AA-232-04XT	RED	4	.119/(3.02)												
	190700040	AA-232-06X	190700042	AA-232-06XT	RED	6	.146/(3.71)												
	190700044	AA-232-08X	190700045	AA-232-08XT	RED	8	.173/(4.39)	.264/(6.70)	.240/(6.10)	.807/(20.50)	.062/(1.57)	.028/(0.71)							
	190700051	AA-233-10X	190700052	AA-233-10XT	RED	10	.198/(5.03)												

(C2)



SALES DRAWING

- NOTE(S):
1. MATERIAL: COPPER
PLATING: ELECTROPLATE TIN
 2. DELETED
 3. INSULATION: MOLDED PVC, SEE CHART FOR COLOR (C2)
 4. MWID=MAXIMUM WIRE INSULATION DIA.
 5. ALL DIMENSIONS IN INCHES (MM).
 6. PARTS ARE ROHS COMPLIANT.

REDRAW: ADD BLACK HSG EC NO: WNA2011-0382 DRAWN: ETHRODAHL 2011/01/20 CHKD: APPR: JMACNEIL 2011/02/21 DESCRIPTION	QUALITY SYMBOLS	GENERAL TOLERANCES (UNLESS SPECIFIED)	DIMENSION STYLE	SCALE	DESIGN UNITS	THIRD ANGLE PROJECTION																		
	$\nabla=0$ $\nabla=0$	<table border="1"> <tr> <th></th> <th>mm</th> <th>INCH</th> </tr> <tr> <td>4 PLACES</td> <td>±---</td> <td>±---</td> </tr> <tr> <td>3 PLACES</td> <td>±---</td> <td>±---</td> </tr> <tr> <td>2 PLACES</td> <td>±---</td> <td>±---</td> </tr> <tr> <td>1 PLACE</td> <td>±---</td> <td>±---</td> </tr> <tr> <td colspan="3">ANGULAR ±---</td> </tr> </table>		mm	INCH	4 PLACES	±---	±---	3 PLACES	±---	±---	2 PLACES	±---	±---	1 PLACE	±---	±---	ANGULAR ±---			IN/MM	---	INCH	
		mm	INCH																					
	4 PLACES	±---	±---																					
3 PLACES	±---	±---																						
2 PLACES	±---	±---																						
1 PLACE	±---	±---																						
ANGULAR ±---																								
	DRAFT WHERE APPLICABLE MUST REMAIN WITHIN DIMENSIONS	<table border="1"> <tr> <td>DRAWN BY</td> <td>DATE</td> </tr> <tr> <td>DMYRICK</td> <td>2005/7/22</td> </tr> <tr> <td>CHECKED BY</td> <td>DATE</td> </tr> <tr> <td>HBEITZEL</td> <td>2005/7/22</td> </tr> <tr> <td>APPROVED BY</td> <td>DATE</td> </tr> <tr> <td>RDEROSS</td> <td>2005/7/22</td> </tr> </table>	DRAWN BY	DATE	DMYRICK	2005/7/22	CHECKED BY	DATE	HBEITZEL	2005/7/22	APPROVED BY	DATE	RDEROSS	2005/7/22	TITLE	RING TONGUE TERMINAL INSULKRIMP, 200-SERIES 22-18 AWG								
DRAWN BY	DATE																							
DMYRICK	2005/7/22																							
CHECKED BY	DATE																							
HBEITZEL	2005/7/22																							
APPROVED BY	DATE																							
RDEROSS	2005/7/22																							
(C2)			MATERIAL NO.	DOCUMENT NO.	SHEET NO.																			
			SEE CHART	SD-19070-003	1 OF 1																			
THIS DRAWING CONTAINS INFORMATION THAT IS PROPRIETARY TO MOLEX INCORPORATED AND SHOULD NOT BE USED WITHOUT WRITTEN PERMISSION																								