

NOTES:

1. MATERIAL: SEE CHART
2. FINISH: SEE CHART
3. GAP REQUIRED ON UNPLATED TERMINALS ONLY
4. CRIMP IS FOR 22-28 GA WIRE WITH 1.7 DIA. INSULATION MAX.
5. SEE EB-2759 FOR BLANK LAYOUT.
6. CENTERLINE OF 1.98 CUT-OFF MUST BE WITHIN ±0.12 OF CENTERLINE OF CANTILEVER AT DATUM -E-.

REDDRAWN EC NO: UCP2012-2838 DRAWN: JAGUILAR 2012/02/28 CHKD: J BELL 2012/02/28 APPR: FSMITH 2013/05/13	DESCRIPTION REV	QUALITY SYMBOLS	GENERAL TOLERANCES (UNLESS SPECIFIED)		DIMENSION STYLE MM ONLY	SCALE 10:1	DESIGN UNITS METRIC	THIRD ANGLE PROJECTION	
		▽=0 ▽=0 ▽=5	mm	INCH	DRAWN BY JAGUILAR	DATE 2012/02/28	TITLE KK CRIMP TERMINAL 2MM PILOT HOLE 22-28 GA WIRE	molex	
			4 PLACES ± --- ± ---		CHECKED BY MKIPPER	DATE 2012/02/28		DOCUMENT NO. E-2759*	
			3 PLACES ± --- ± ---		APPROVED BY	DATE		SHEET NO. 1 OF 2	
			2 PLACES ± 0.15 ± ---		MATERIAL NO. SEE CHART		THIS DRAWING CONTAINS INFORMATION THAT IS PROPRIETARY TO MOLEX. INCORPORATED AND SHOULD NOT BE USED WITHOUT WRITTEN PERMISSION		
			1 PLACE ± --- ± ---		ANGULAR ± 1 °				
			0 PLACE ± ±		DRAFT WHERE APPLICABLE MUST REMAIN WITHIN DIMENSIONS				

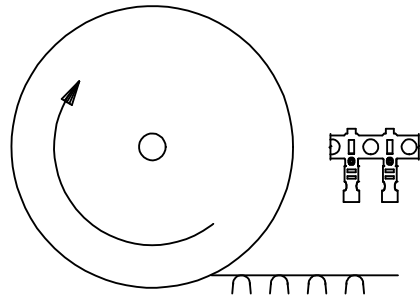
EDP NO.	ENG. NO.	MAKE FROM:	FORM	WINDING DIRECTION	FINISH	MATERIAL TYPE
39-00-0381	2759PBGL	39-00-0380	LOOSE	N/A	PER ES-88 550	0.203 THICK C51000 PHOS. BRONZE
39-00-0380	2759PBG	08-50-0188	CHAIN	B		
39-00-0107	2759PBT	39-00-0064	LOOSE	N/A		
39-00-0064	2759PBT	PRE-PLATED STRIP 59045-8360 OR 67999-0064	CHAIN	B	PER ES-88 130	
08-50-0188	2759PBT-WOP	80-07-0816 OR 43587-5136	CHAIN	A	UNPLATED	
39-00-0377	2759GL	39-00-0376	LOOSE	N/A	PER ES-88 550	
39-00-0376	2759G	98-56-0019	CHAIN	B	PER ES-88 550	0.203 THICK C26000 BRASS
39-00-0374	2759GS	98-56-0019	CHAIN	B		
39-00-0373	2759TL	39-00-0372	LOOSE	N/A		
39-00-0372	2759T	PRE-PLATED STRIP 89991-0130 OR 43587-0436	CHAIN	B	PER ES-88 912	
98-56-0019	2759T-WOP	80-01-0804 OR 64897-0796	CHAIN	A	UNPLATED	

FINISH PER ES-88

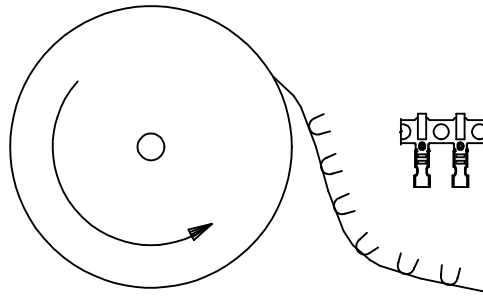
130 = OVERALL REFLOWED TIN: 0.00091 MIN.

912 = OVERALL REFLOWED TIN: 0.00089 MIN.
OVERALL COPPER UNDERPLATE: 0.00051 MIN.

550 = SELECT HARD GOLD: 0.00038 MIN.
OVERALL HARD GOLD FLASH: 0.00005-0.00025
OVERALL NICKEL UNDERPLATE: 0.00076 MIN.

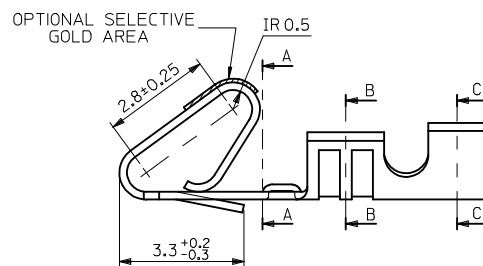
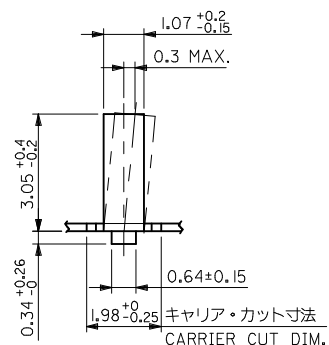
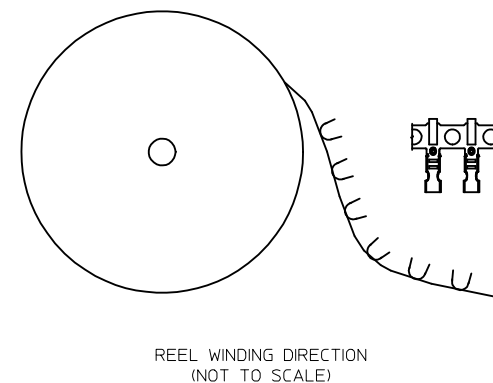
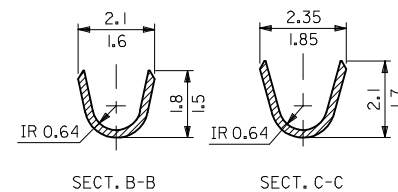
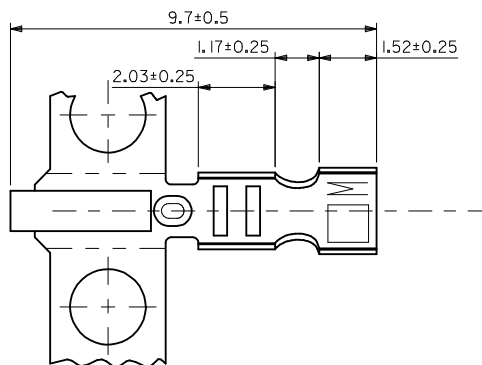
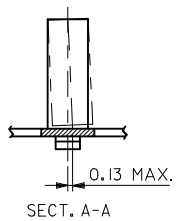


REEL WINDING DIRECTION A
(NOT TO SCALE)



REEL WINDING DIRECTION B
(NOT TO SCALE)

SEE SHEET 1 EC NO: UCP2012-2838 DRWN: JAGUILAR 2012/02/28 CHKD: JBELL 2012/02/28 APPR: FSMITH 2013/05/13	QUALITY SYMBOLS 	GENERAL TOLERANCES (UNLESS SPECIFIED)		DIMENSION STYLE MM ONLY	SCALE 10:1	DESIGN UNITS METRIC	THIRD ANGLE PROJECTION	
		mm	INCH	DRAWN BY J JAGUILAR	DATE 2012/02/28	KK CRIMP TERMINAL 2MM PILOT HOLE 22-28 GA WIRE 		
		4 PLACES ± ---	± ---	CHECKED BY	DATE			
		3 PLACES ± ---	± ---	MKIPPER	2012/02/28			
2 PLACES ± 0.15	± ---	APPROVED BY	DATE					
1 PLACE ± ---	± ---	MATERIAL NO. SEE CHART		DOCUMENT NO. E-2759*	SHEET NO. 2 OF 2			
0 PLACE ±	±	DRAFT WHERE APPLICABLE MUST REMAIN WITHIN DIMENSIONS		THIS DRAWING CONTAINS INFORMATION THAT IS PROPRIETARY TO MOLEX INCORPORATED AND SHOULD NOT BE USED WITHOUT WRITTEN PERMISSION				



39-00-0107	2759PBT	バラ状 LOOSE	0.00091 MIN REFLOWED TIN	
39-00-0064	PBT	連鎖状 CHAIN		リン 青銅 PHOS BRO.
39-00-0381	PBGL	バラ状 LOOSE	SELECTIVE GOLD: 0.00038 MIN. OVERALL GOLD FLASH: 0.00005-0.00025 OVERALL NICKEL UNDERPLATE: 0.00076 MIN.	
39-00-0380	PBG	連鎖状 CHAIN		
39-00-0377	GL	バラ状 LOOSE	SELECTIVE GOLD: 0.00038 MIN. OVERALL GOLD FLASH: 0.00005-0.00025 OVERALL NICKEL UNDERPLATE: 0.00076 MIN.	黄銅 BRASS
39-00-0376	G	連鎖状 CHAIN		
39-00-0374	GS	連鎖状 CHAIN		
39-00-0373	TL	バラ状 LOOSE	0.00089 MIN REFLOWED TIN OVER 0.00051 MIN COPPER UNDERPLATE	
39-00-0372	2759 T	連鎖状 CHAIN		
EDP.NO.	ENG.NO.	端子形状 FORM	メッキ仕様 FINISH	材質 MATL

NOTES:

1. MATERIAL: SEE CHART
2. FINISH: SEE CHART
3. PRODUCT SPECIFICATION PS-10-07
4. 芯ズレ 0.13最大
DIM 1.98 +0 / -0.25 TO BE SYMMETRICAL
WITHIN 0.13 T.I.R
5. THIS PART CONFORMS TO CLASS B REQUIREMENTS OF
COSMETIC SPECIFICATION PS-45499-002

ADD/REMOVE PARTS EC NO: UCP2012-2836 DRAWN: MSTRÖH 2012/01/05 CHKD: JHELL 2012/01/05 APPR: FSMITH 2013/05/13	DESCRIPTION REV	QUALITY SYMBOLS	GENERAL TOLERANCES (UNLESS SPECIFIED)		DIMENSION STYLE		SCALE	DESIGN UNITS	THIRD ANGLE PROJECTION		
			mm	INCH	MM ONLY			METRIC			
		▽=0	4 PLACES ±	---	±	---	DRAWN BY	DATE	TITLE		
		▽=0	3 PLACES ±	---	±	---	CHECKED BY	DATE	MINI, KK, CRIMP TYPE TERM		
▽=0	2 PLACES ±	---	±	---	K. ASAKAWA 2002/04/08						
	1 PLACE ±	---	±	---	APPROVED BY						
	0 PLACE ±	---	±	---							
ANGULAR ±			DRAFT WHERE APPLICABLE MUST REMAIN WITHIN DIMENSIONS		MATERIAL NO.		DOCUMENT NO.		SHEET NO.		
X					SEE CHART		SD-2759*		1 OF 1		
THIS DRAWING CONTAINS INFORMATION THAT IS PROPRIETARY TO MOLEX INCORPORATED AND SHOULD NOT BE USED WITHOUT WRITTEN PERMISSION											

