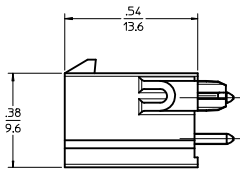
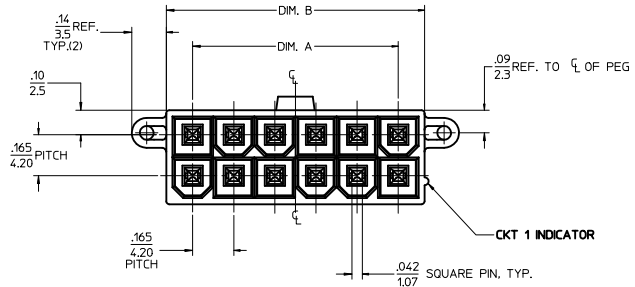
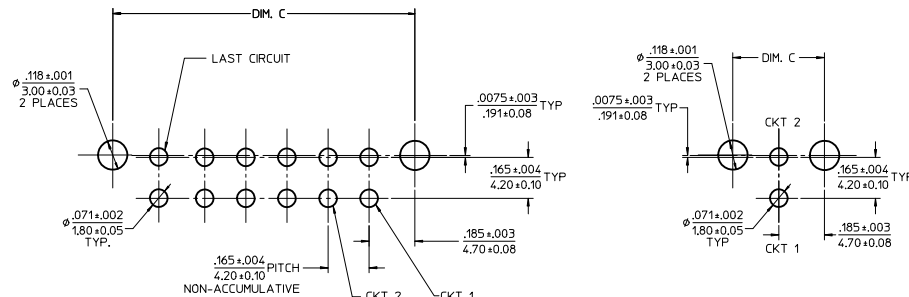


ISOMETRIC VIEW
(12 CKT - SHOWN)



CIRCUIT SIZE	TAPE & REEL MATERIAL NUMBER	TRAY PACKED MATERIAL NUMBER	DIM. A	DIM. B	DIM. C	DIM. D	PCB THK.
02	462073002 *	462070002 *	NA	0.21/5.4	0.37/9.4	0.144/3.66	0.062
04	462073004 *	462070004 *	0.165/4.20	0.38/9.6	0.535/13.60	0.144/3.66	0.062
06	462073006 *	462070006 *	0.331/8.40	0.54/13.8	0.701/17.80	0.144/3.66	0.062
08	462073008 *	462070008 *	0.496/12.60	0.71/18.0	0.866/22.00	0.144/3.66	0.062
10	462073010 *	462070010 *	0.661/16.80	0.87/22.2	1.031/26.20	0.144/3.66	0.062
12	462073012 *	462070012 *	0.827/21.00	1.04/26.4	1.197/30.40	0.144/3.66	0.062
14	462073014 *	462070014 *	0.992/25.20	1.21/30.6	1.362/34.60	0.144/3.66	0.062
16	462073016 *	462070016 *	1.160/29.40	1.37/34.8	1.528/38.80	0.144/3.66	0.062
18	462073018 *	462070018 *	1.323/33.60	1.54/39.0	1.693/43.00	0.144/3.66	0.062
20	462073020 *	462070020 *	1.488/37.80	1.70/43.2	1.858/47.20	0.144/3.66	0.062
22	462073022 *	462070022 *	1.654/42.00	1.87/47.4	2.024/51.40	0.144/3.66	0.062
24	462073024 *	462070024 *	1.819/46.20	2.03/51.6	2.189/55.60	0.144/3.66	0.062
02	462070102 *	NA	0.21/5.4	0.37/9.4	0.176/4.46	0.093	0.093
04	462070104 *	0.165/4.20	0.38/9.6	0.535/13.60	0.176/4.46	0.093	0.093
06	462070106 *	0.331/8.40	0.54/13.8	0.701/17.80	0.176/4.46	0.093	0.093
08	462070108 *	0.496/12.60	0.71/18.0	0.866/22.00	0.176/4.46	0.093	0.093
10	462070110 *	0.661/16.80	0.87/22.2	1.031/26.20	0.176/4.46	0.093	0.093
12	462070112 *	0.827/21.00	1.04/26.4	1.197/30.40	0.176/4.46	0.093	0.093
14	462070114 *	0.992/25.20	1.21/30.6	1.362/34.60	0.176/4.46	0.093	0.093
16	462070116 *	1.160/29.40	1.37/34.8	1.528/38.80	0.176/4.46	0.093	0.093
18	462070118 *	1.323/33.60	1.54/39.0	1.693/43.00	0.176/4.46	0.093	0.093
20	462070120 *	1.488/37.80	1.70/43.2	1.858/47.20	0.176/4.46	0.093	0.093
22	462070122 *	1.654/42.00	1.87/47.4	2.024/51.40	0.176/4.46	0.093	0.093
24	462070124 *	1.819/46.20	2.03/51.6	2.189/55.60	0.176/4.46	0.093	0.093
02	462070202 *	NA	0.21/5.4	0.37/9.4	0.207/5.26	0.125	0.125
04	462070204 *	0.165/4.20	0.38/9.6	0.535/13.60	0.207/5.26	0.125	0.125
06	462070206 *	0.331/8.40	0.54/13.8	0.701/17.80	0.207/5.26	0.125	0.125
08	462070208 *	0.496/12.60	0.71/18.0	0.866/22.00	0.207/5.26	0.125	0.125
10	462070210 *	0.661/16.80	0.87/22.2	1.031/26.20	0.207/5.26	0.125	0.125
12	462070212 *	0.827/21.00	1.04/26.4	1.197/30.40	0.207/5.26	0.125	0.125
14	462070214 *	0.992/25.20	1.21/30.6	1.362/34.60	0.207/5.26	0.125	0.125
16	462070216 *	1.160/29.40	1.37/34.8	1.528/38.80	0.207/5.26	0.125	0.125
18	462070218 *	1.323/33.60	1.54/39.0	1.693/43.00	0.207/5.26	0.125	0.125
20	462070220 *	1.488/37.80	1.70/43.2	1.858/47.20	0.207/5.26	0.125	0.125
22	462070222 *	1.654/42.00	1.87/47.4	2.024/51.40	0.207/5.26	0.125	0.125
24	462070224 *	1.819/46.20	2.03/51.6	2.189/55.60	0.207/5.26	0.125	0.125

* DESIGNATES PART NOT RELEASED. CONTACT FACTORY FOR AVAILABILITY.



RECOMMENDED PCB HOLE LAYOUT COMPONENT SIDE

- NOTES:
1. MATERIALS:
HOUSING - LIQUID CRYSTAL POLYMER (LCP), COLOR: BLACK
TERMINAL - BRASS ALLOY C26000
 2. TERMINAL PLATING: .000100/0.00254 MIN MATTE TIN
.000050/0.00127 MIN NICKEL
 3. PRODUCT SPECIFICATION: PS-46207-001
 4. PACKAGING SPECIFICATION: TRAY PACK PER PK-46207-001
TAPE AND REEL PACK PER PK-46207-002
 5. PART CONFORMS TO COSMETIC SPECIFICATION PS-45499-002.

CORRECTED 3000 P/N EEC NO. UCF2010-1610 DRAWN: JAGUILAR CHKD: BELL APPROV: SMITH DATE: 2010/01/26 DATE: 2010/01/26	QUALITY SYMBOLS 4 PLACES ± --- ± --- 3 PLACES ± --- ± .005 2 PLACES ± 0.13 ± .010 1 PLACE ± 0.25 ± --- ANGULAR ±1/2° DRAFT WHERE APPLICABLE MUST REMAIN WITHIN DIMENSIONS	GENERAL TOLERANCES (UNLESS SPECIFIED) mm INCH		DIMENSION STYLE IN/MM	SCALE 4:1	DESIGN UNITS METRIC	THIRD ANGLE PROJECTION	
		DRAWN BY DATE DROSCA 08/07/2006		TITLE MINI-FIT RTC HI-TEMP VERTICAL HEADER IN LCP, W/PCB PEGS		MOLEX INCORPORATED		
		CHECKED BY DATE BWIRKUS 08/07/2006		APPROVED BY DATE BWIRKUS 08/07/2006		MATERIAL NO. SEE TABLE		DOCUMENT NO. SD-46207-001