

MATERIALS AND FINISHES

BODY: BRASS
PLATED: NICKEL

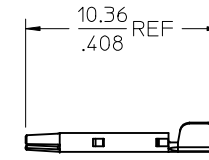
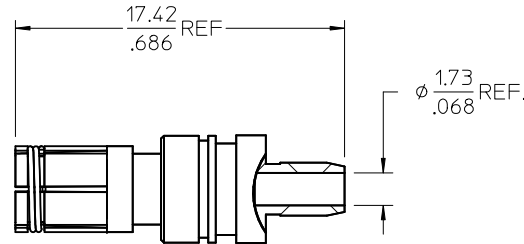
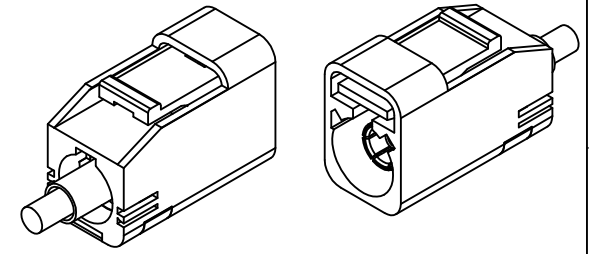
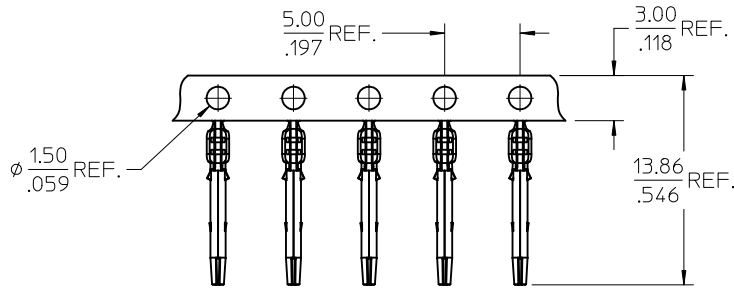
CENTER CONTACT: PHOSPOR BRONZE
PLATED: GOLD /TIN

CRIMP TUBE: BRASS
PLATED: NICKEL

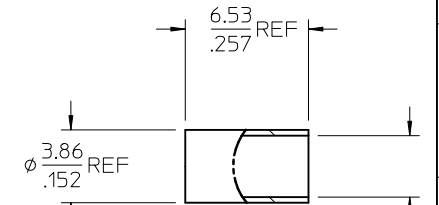
OUTER CASING: NYLON 66 OR EQUIVALENT
KEYING: SEE TABLE
COLOR: SEE TABLE

INSULATOR: PP

PACKAGING BY BAG

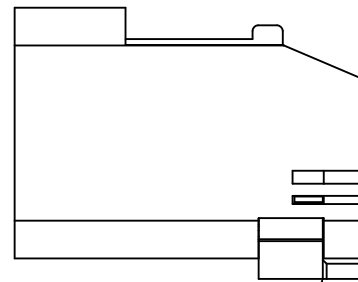
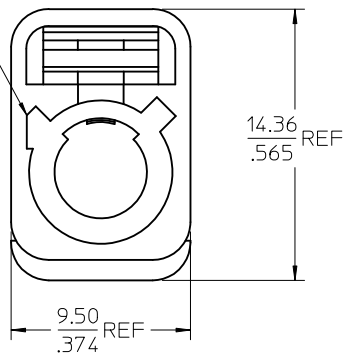


CONTACT

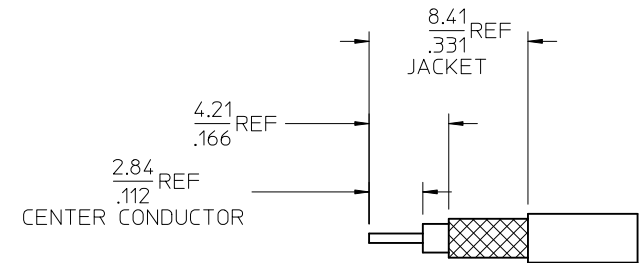


CRIMP TUBE

FAKRA
CONNECTOR
KEYING
CODE B SHOWN



SECONDARY LOCK
(TPA)



CENTER CONDUCTOR

PART # SEE SHEET 2

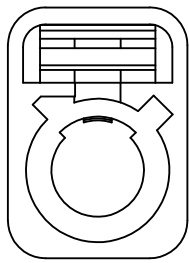
PS-89675-331	PRODUCT SPECIFICATION
DIN 72594-1	INTERFACE SPECIFICATION
SPECIFICATION	DESCRIPTION

DESIGN CHANGE BODY OUTSIDE DIM. PER RF12-E068	EC NO: URF2012-0599	2012/04/12
	DRW: ELIN	2012/06/15
	CHKD: MHI	
	APPR: MHI	
REV	DESCRIPTION	

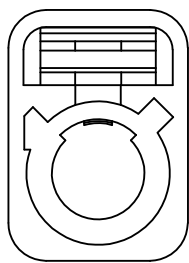
QUALITY SYMBOLS	GENERAL TOLERANCES (UNLESS SPECIFIED)
▽=0	mm INCH
▽=0	4 PLACES ± .005 ± .0005
	3 PLACES ± .005 ± .0005
	2 PLACES ± .005 ± .0005
	1 PLACE ± .005 ± .0005
	ANGULAR ± 2°
	DRAFT WHERE APPLICABLE MUST REMAIN WITHIN DIMENSIONS

DIMENSION STYLE		SCALE
MM/IN		DESIGN UNITS METRIC
DRAWN BY	DATE	TITLE
EL IN	2011/02/15	FAKRA II PLUG STR. FOR RG316.174 CABLE FAKRA II -P
CHECKED BY	DATE	
JUDY	2011/02/15	
APPROVED BY	DATE	
MHI	2011/05/27	
MATERIAL NO.	DOCUMENT NO.	SHEET NO.
SEE SHT 2	SD-73403-574	1 OF 2

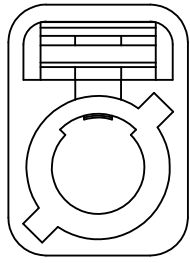
THIRD ANGLE PROJECTION	
MOLEX INCORPORATED	
THIS DRAWING CONTAINS INFORMATION THAT IS PROPRIETARY TO MOLEX INCORPORATED AND SHOULD NOT BE USED WITHOUT WRITTEN PERMISSION	



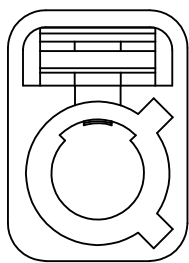
CODE A



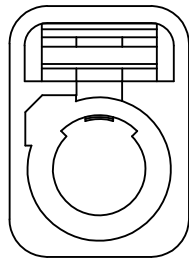
CODE B



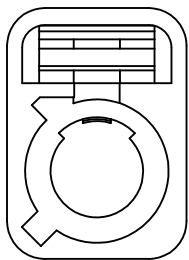
CODE C



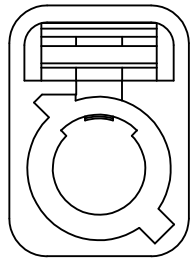
CODE D



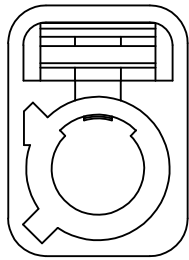
CODE E



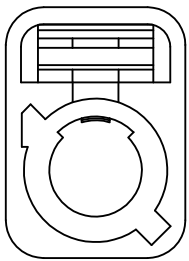
CODE F



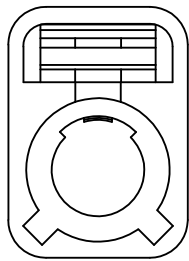
CODE G



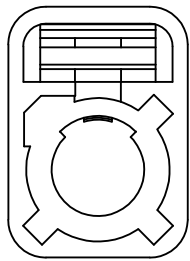
CODE H



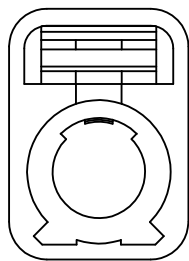
CODE I



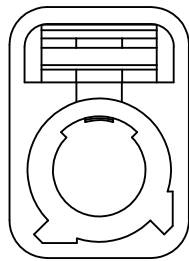
CODE K



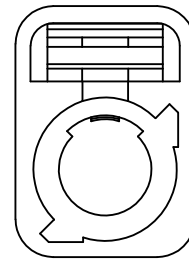
CODE Z



CODE L



CODE M



CODE N

N	PASTEL GREEN	73403-5753
M	PASTEL ORANGE	73403-5752
L	CARMINE RED	73403-5751
Z	WATER BLUE	73403-5750
K	CURRY YELLOW	73403-5749
I	BEIGE	73403-5748
H	VIOLET	73403-5747
G	GRAY	73403-5746
F	BROWN	73403-5745
E	GREEN	73403-5744
D	BORDEAUXVIOLET	73403-5743
C	BLUE	73403-5742
B	CREAM WHITE	73403-5741
A	BLACK	73403-5740
KEYING CODE	COLOR	PART NO.

SEE SHEET 1 EC NO: URF2012-0599 DRWNLIN 2012/04/12 CHKD: APPR:MHUANG 2012/06/15 DESCRIPTION REV:	QUALITY SYMBOLS ▽=0 ▽=0	GENERAL TOLERANCES (UNLESS SPECIFIED) <table border="1"> <tr> <th></th> <th>mm</th> <th>INCH</th> </tr> <tr> <td>4 PLACES</td> <td>± .---</td> <td>± .---</td> </tr> <tr> <td>3 PLACES</td> <td>± .---</td> <td>± .---</td> </tr> <tr> <td>2 PLACES</td> <td>± .---</td> <td>± .---</td> </tr> <tr> <td>1 PLACE</td> <td>± .---</td> <td>± .---</td> </tr> </table> ANGULAR ± 2 °		mm	INCH	4 PLACES	± .---	± .---	3 PLACES	± .---	± .---	2 PLACES	± .---	± .---	1 PLACE	± .---	± .---	DIMENSION STYLE MM/IN DRAWN BY DATE EL IN 2011/02/15 CHECKED BY DATE JUDY 2011/02/15 APPROVED BY DATE MHUANG 2011/05/27	SCALE DESIGN UNITS METRIC THIRD ANGLE PROJECTION	TITLE FAKRA II PLUG STR. FOR RG316,174 CABLE FAKRA II -P	MATERIAL NO. SEE TABLE SIZE C	DOCUMENT NO. SD-73403-574	SHEET NO. 2 OF 2
		mm	INCH																				
	4 PLACES	± .---	± .---																				
	3 PLACES	± .---	± .---																				
2 PLACES	± .---	± .---																					
1 PLACE	± .---	± .---																					
DRAFT WHERE APPLICABLE MUST REMAIN WITHIN DIMENSIONS			MOLEX INCORPORATED		THIS DRAWING CONTAINS INFORMATION THAT IS PROPRIETARY TO MOLEX INCORPORATED AND SHOULD NOT BE USED WITHOUT WRITTEN PERMISSION																		