

MATERIALS AND FINISHES

BODY, C'NUT, WASHER, CLAMP
NUT BRASS
PLATED NICKEL

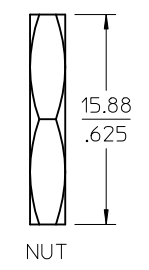
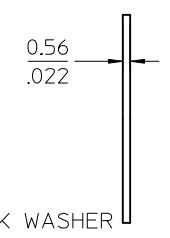
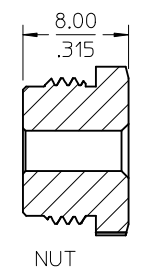
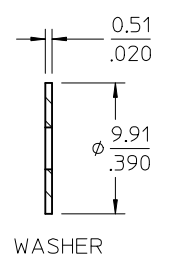
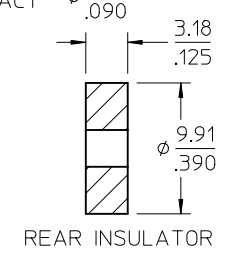
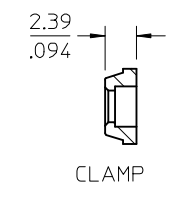
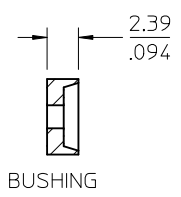
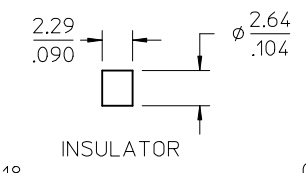
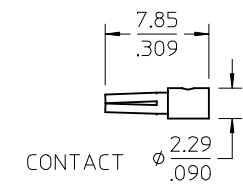
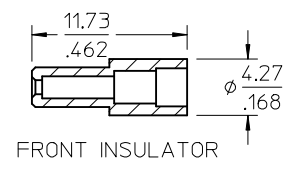
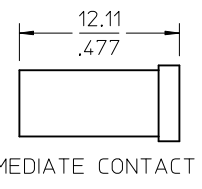
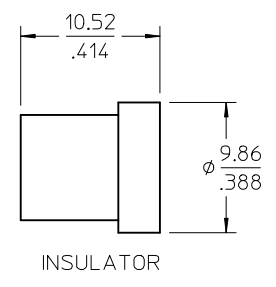
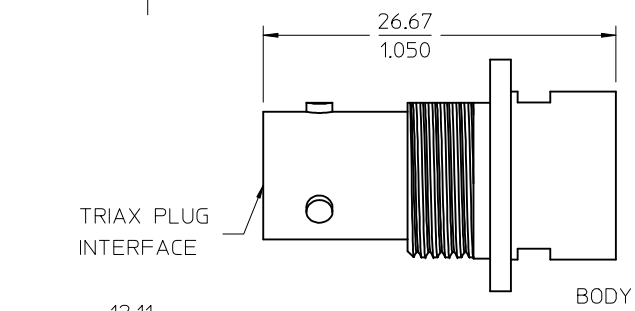
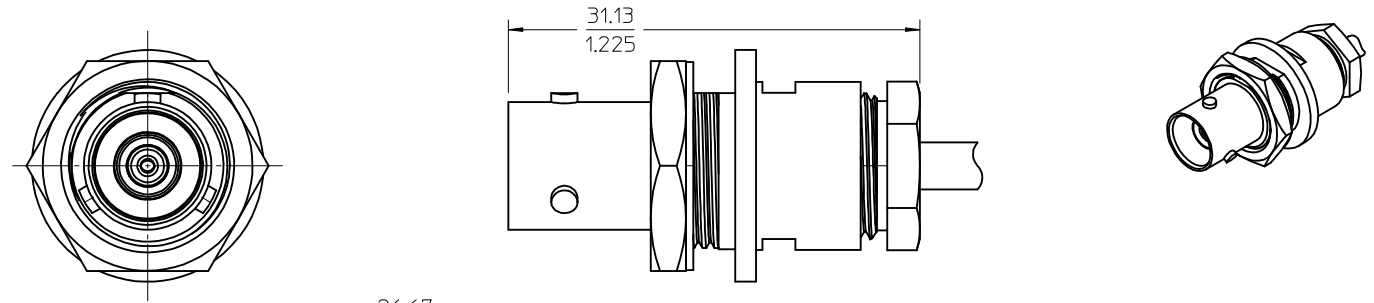
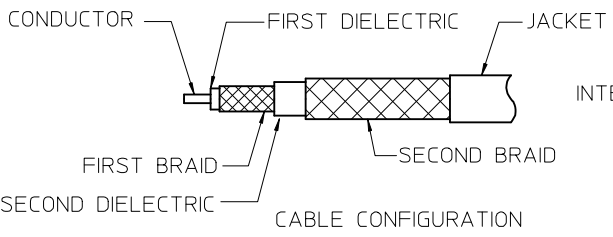
INTERMEDIATE CONTACT, BUSHING BRASS
PLATED GOLD

INSULATOR TEFLON

CONTACT BERYLLIUM COPPER
PLATED GOLD

LOCKWASHER PHOSPHOR BRONZE
PLATED NICKEL

GASKET SILICONE RUBBER



SEE SHEETS 2 THRU 4	ASSEMBLY INSTRUCTIONS
PS-89675-035	PRODUCT SPECIFICATION
MIL-STD-348A, FIG. 201-1	INTERFACE
SPECIFICATION	DESCRIPTION

73415-2071	ALL PIECES OF 73415-2070 IN ONE BAG
73415-2070	BULK, 50 PCS
PART NO.	PACKAGING

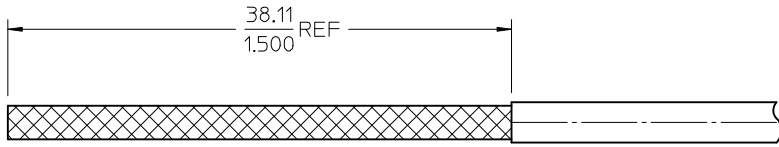
CHG: NEW RELEASE EC NO: URF2007-0489 DRWN:SSHAH 2007/06/01 CHKD:ROBERTSON 2012/09/06 APPR:JWIENER 2012/09/06	DESCRIPTION
	REV
	QUALITY SYMBOLS
	GENERAL TOLERANCES (UNLESS SPECIFIED)

QUALITY SYMBOLS	▽=0	▽=0
GENERAL TOLERANCES (UNLESS SPECIFIED)	mm	INCH
4 PLACES	± .005	± .0005
3 PLACES	± .005	± .0005
2 PLACES	± .005	± .0005
1 PLACE	± .005	± .0005
ANGULAR ± 2°		

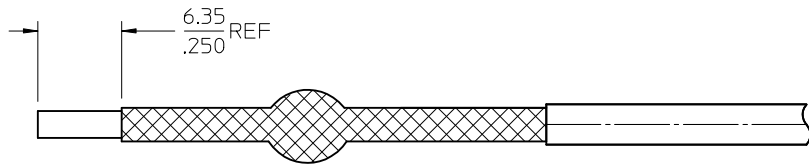
DRAWN BY	DATE
SSS	2007/06/01
CHECKED BY	DATE
TEF	2007/06/01
APPROVED BY	DATE
JWIENER	2012/09/06
MATERIAL NO.	DOCUMENT NO.
SEE TABLE	SD-73415-207

SCALE	DESIGN UNITS	THIRD ANGLE PROJECTION
	METRIC	

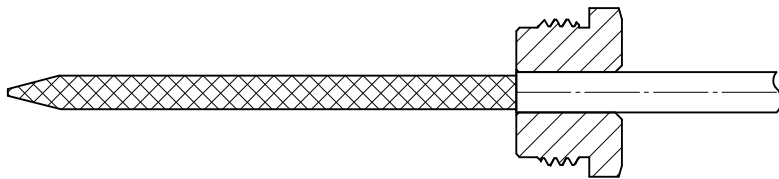
TITLE		MOLEX INCORPORATED
TRIAx JACK, BULKHEAD 3 LUGS, HIGH VOLTAGE EWR2490 TRIAX-PC		
SHEET NO.		1 OF 4



1. CUT OFF END OF CABLE . REMOVE JACKET TO DIMENSION SHOWN.
DO NOT NICK BRAID

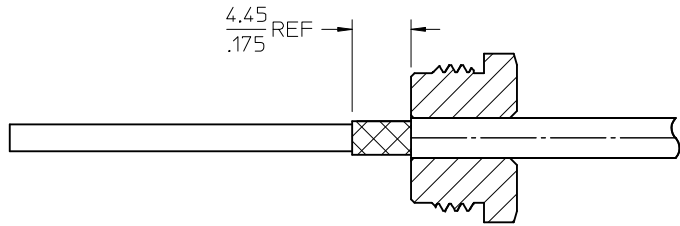


2. PULL BACK BRAID AND CUT OFF END OF CABLE TO DIMENSION SHOWN

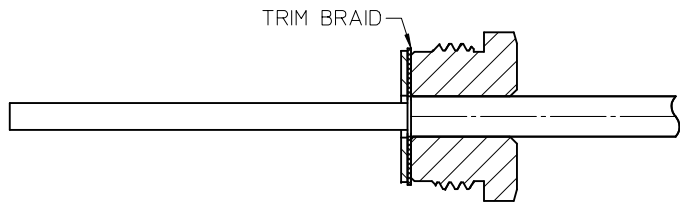


3. PULL OUTER BRAID FORWARD AND TAPER. SLIDE NUT OVER TAPERED BRAID
MAKE SURE THAT CABLE JACKET IS POSITIONED ALONG FACE OF NUT

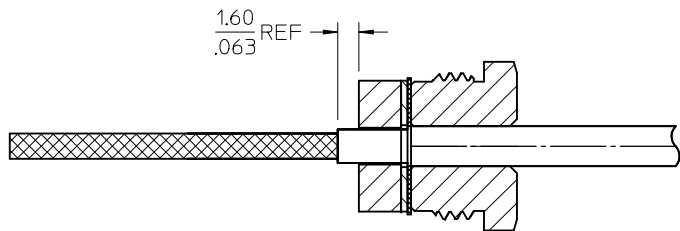
CHG: SEE SHEET 1 EC NO: URF2007-0489 DRWN:SSHAH 2007/06/01 CHKD:ROBERTSON 2012/09/06 APPR:JWIENER 2012/09/06	QUALITY SYMBOLS ▼=0 ▽=0	GENERAL TOLERANCES (UNLESS SPECIFIED)		DIMENSION STYLE MM/IN		SCALE	DESIGN UNITS METRIC	THIRD ANGLE PROJECTION			
		4 PLACES ± --- ± ---	3 PLACES ± --- ± ---	2 PLACES ± --- ± ---	1 PLACE ± --- ± ---	DRAWN BY SSS	DATE 2007/06/01	TITLE TRIAx JACK, BULKHEAD 3 LUGS, HIGH VOLTAGE EWR2490 TRIAX-PC			
		ANGULAR ± 2 °				CHECKED BY TEF	DATE 2007/06/01	MOLEX INCORPORATED			
		DRAFT WHERE APPLICABLE MUST REMAIN WITHIN DIMENSIONS				APPROVED BY JWIENER	DATE 2012/09/06	MATERIAL NO. 731750140	DOCUMENT NO. SD-73415-207	SHEET NO. 2 OF 4	



4. TRIM OUTER BRAID TO DIMENSION SHOWN



5. FLARE BACK OUTER BRAID OVER CLAMP. SLIDE WASHER CABLE AND COMPACT SLIGHTLY. TRIM BRAID



6. PLACE GASKET OVER CABLE. TRIM DIELECTRIC AS SHOWN

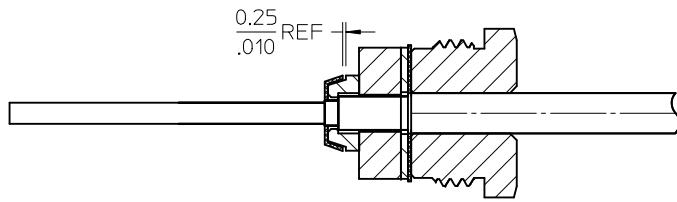
CHG: SEE SHEET 1
 EC NO: URF2007-0489
 DRWN:SSHAH 2007/06/01
 CHKD:ROBERTSON 2012/09/06
 APPR:JWIENER 2012/09/06

REV	DESCRIPTION
A	

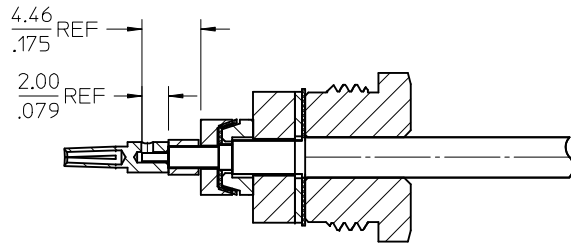
QUALITY SYMBOLS	
	=0
	=0

GENERAL TOLERANCES (UNLESS SPECIFIED)	
4 PLACES	± .005
3 PLACES	± .005
2 PLACES	± .005
1 PLACE	± .005
ANGULAR ± 2 °	

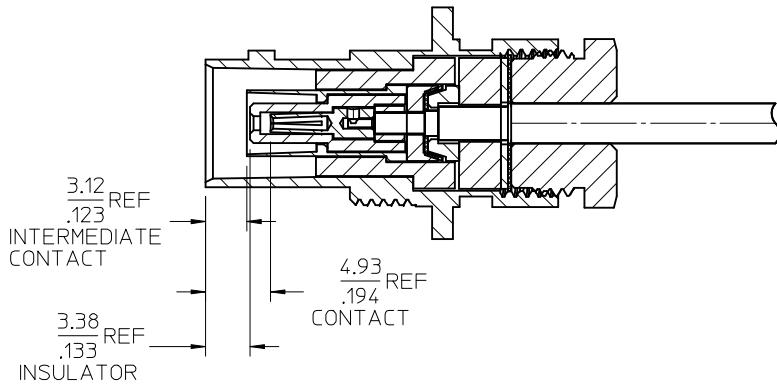
DIMENSION STYLE		SCALE	DESIGN UNITS	THIRD ANGLE PROJECTION
MM/IN			METRIC	
DRAWN BY	DATE	TITLE		
SSS	2007/06/01	TRIAx JACK, BULKHEAD 3 LUGS, HIGH VOLTAGE EWR2490 TRIAX-PC		
CHECKED BY	DATE	MOLEX INCORPORATED		
TEF	2007/06/01	DOCUMENT NO. SD-73415-207		
APPROVED BY	DATE	SHEET NO. 3 OF 4		
JWIENER	2012/09/06	THIS DRAWING CONTAINS INFORMATION THAT IS PROPRIETARY TO MOLEX INCORPORATED AND SHOULD NOT BE USED WITHOUT WRITTEN PERMISSION		



7. SLIDE CLAMP OVER INNER BRAID UNTIL BOTTOMS. COMB BRAID AND FLARE OVER CLAMP. TRIM BRAID TO DIMENSION SHOWN



8. SLIDE BUSHING AND INSULATOR OVER CABLE. TRIM DIELECTRIC AND CENTER CONDUCTOR TO DIMENSION SHOWN. COMPRESS ASSEMBLY. SOLDER CONTACT ON CENTER CONDUCTOR OF CABLE



9. SLIDE FRONT INSULATOR, INTERMEDIATE CONTACT AND INSULATOR AS SHOWN. INSERT ASSEMBLY INTO BODY AND TIGHTEN NUT. TORQUE TO 3.39 N-m(30 IN-LBS) VERIFY INTERFACE DIMENSIONS

CHG: SEE SHEET 1	QUALITY SYMBOLS
EC NO: URF2007-0489	▽=0
DRWN:SSHAH 2007/06/01	▽=0
CHKD:ROBERTSON 2012/09/06	
APPR:JWIENER 2012/09/06	
REV	DESCRIPTION
A	

GENERAL TOLERANCES (UNLESS SPECIFIED)
4 PLACES ± .005 ± .005
3 PLACES ± .005 ± .005
2 PLACES ± .005 ± .005
1 PLACE ± .005 ± .005
ANGULAR ± 2°
DRAFT WHERE APPLICABLE MUST REMAIN WITHIN DIMENSIONS

DIMENSION STYLE	SCALE
MM/IN	METRIC
DRAWN BY	DATE
SSS	2007/06/01
CHECKED BY	DATE
TEF	2007/06/01
APPROVED BY	DATE
JWIENER	2012/09/06
MATERIAL NO.	DOCUMENT NO.
SEE SHEET 1	SD-73415-207
SIZE	SHEET NO.
C	4 OF 4

TITLE	THIRD ANGLE PROJECTION
TRIAx JACK, BULKHEAD 3 LUGS, HIGH VOLTAGE EWR2490 TRIAX-PC	
MOLEX INCORPORATED	
THIS DRAWING CONTAINS INFORMATION THAT IS PROPRIETARY TO MOLEX INCORPORATED AND SHOULD NOT BE USED WITHOUT WRITTEN PERMISSION	