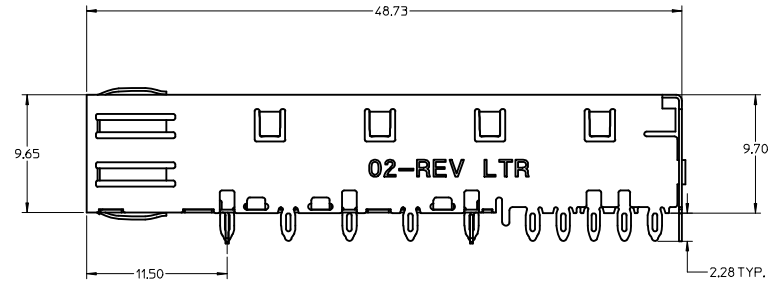
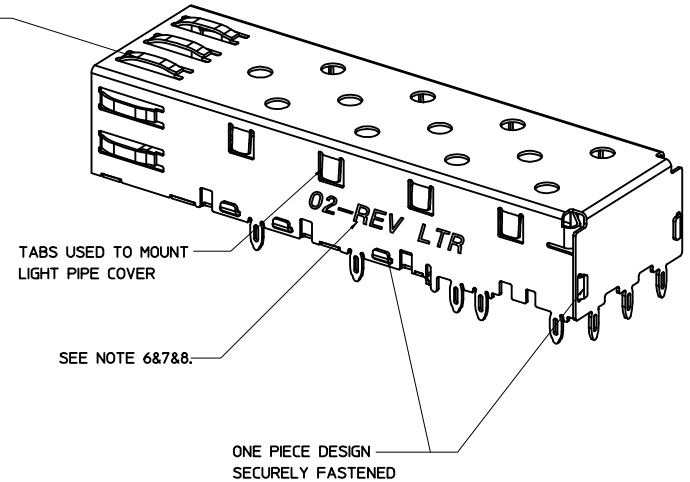


SPRING FINGER GASKET WITH TWO POINTS OF CONTACT. COMPLIES WITH (SFP) MSA BOARD AND BEZEL LOCATIONS.

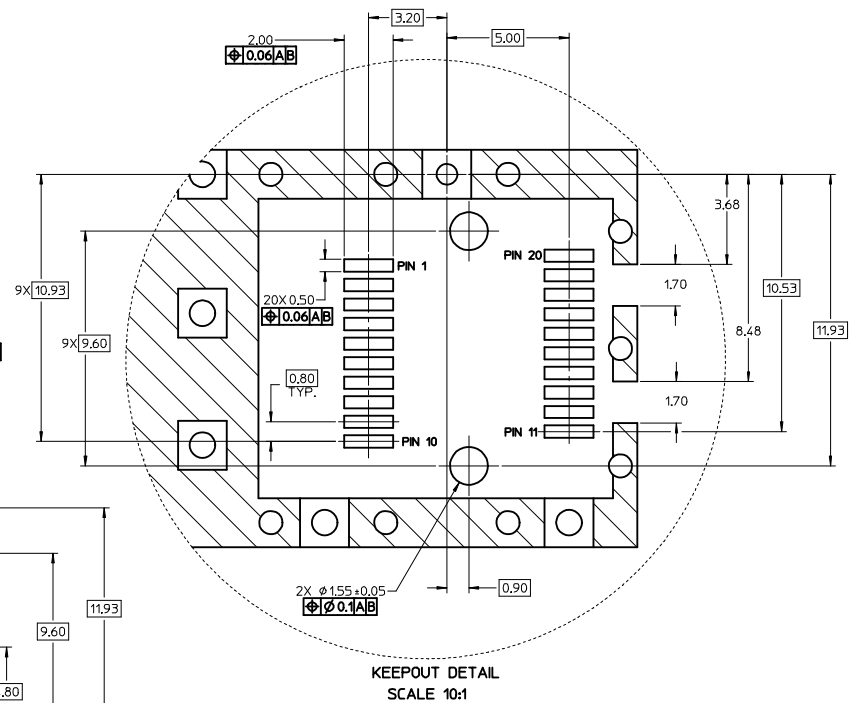
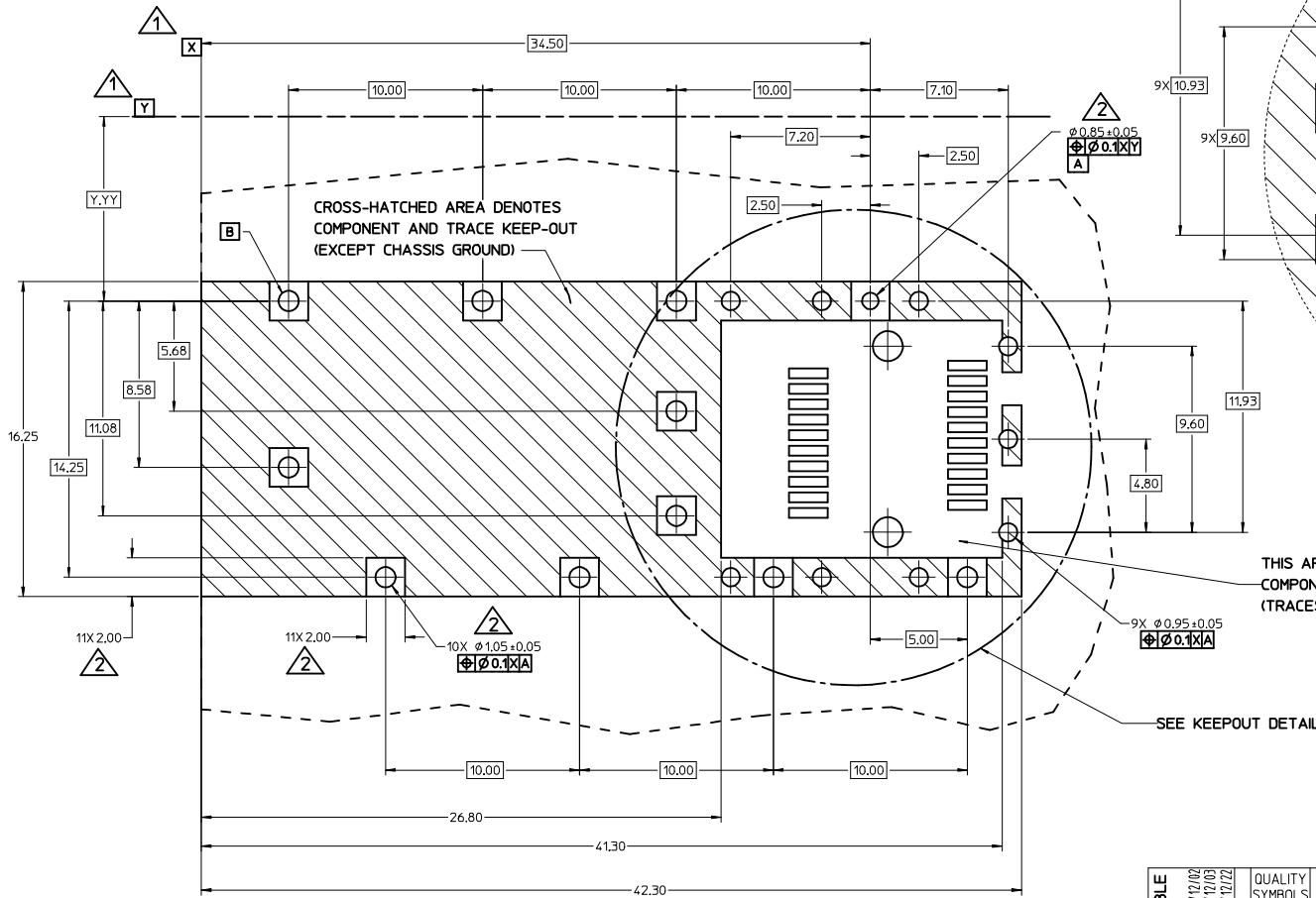


NOTES:

1. PRESS FIT LEGS, 2.28mm LONG.
1.57mm MINIMUM PCB THICKNESS.
2. THIS CAGE IS FOR SINGLE SIDED USE ONLY.
3. CAN BE USED WITH THE FOLLOWING LIGHT PIPE PART NUMBERS:
747260001 - LIGHT PIPE FROM BACK TO TOP
(REFER TO DOCUMENT SD-74726-001)
747260002 - LIGHT PIPE FROM SIDE TO TOP
(REFER TO DOCUMENT SD-74726-002)
4. MATERIAL: COPPER ALLOY
PLATING: PRE-PLATED WITH NICKEL
5. NO RoHS EXEMPTIONS.
6. REVISION LETTER IS FOLLOWING MOLEX 3D MODEL.
7. INSERT TO CHANGE ENGRAVING FOR LAST TWO DIGITS OF PART NUMBER OR 3D REVISION.
8. INSERT TO IDENTIFY ADDITIONAL TOOLING STARTING WITH TOOL #2 AS FOLLOWS:
LAST TWO DIGITS OF PART NUMBER, TOOL NUMBER AND REVISION LETTER
(E.G., 02-3J)

SEE REVISION TABLE IEC NO: CPG2015-2800 DRAWN BY: DRWNLU20 CHECKED BY: CHYKSYANG16 APPROVED BY: APPRRCHE08 DATE: 2014/12/02 DATE: 2014/12/03 DATE: 2014/12/22	QUALITY SYMBOLS	GENERAL TOLERANCES (UNLESS SPECIFIED)	DIMENSION STYLE	SCALE	DESIGN UNITS	THIRD ANGLE PROJECTION	
	▽=0	mm INCH	MM ONLY	5:1	METRIC		
	▽=0	4 PLACES ± --- ± ---	DRAWN BY: CCOX	DATE: 2007/01/18	TITLE: SFP ONE PIECE CAGE PRESS-FIT (0.090 LEGS)		
	▽=0	3 PLACES ± --- ± ---	CHECKED BY: RMAHMOOD	DATE: 2007/01/18	MATERIAL NO: 747370002		
	2 PLACES ± 0.13 ± ---	APPROVED BY: RMAHMOOD	DATE: 2007/01/18	DOCUMENT NO: SD-74737-002		SHEET NO: 1 OF 4	
	1 PLACE ± 0.25 ± ---	DRAFT WHERE APPLICABLE MUST REMAIN WITHIN DIMENSIONS					THIS DRAWING CONTAINS INFORMATION THAT IS PROPRIETARY TO MOLEX INCORPORATED AND SHOULD NOT BE USED WITHOUT WRITTEN PERMISSION
	0 PLACE ± ±	ANGULAR ± 1 °					

- 1. DATUM AND BASIC DIMENSIONS ESTABLISHED BY CUSTOMER.
- 2. PADS AND VIAS ARE CHASSIS GROUND.
- 3. HOLE LAYOUT SHOWN IS FOR SINGLE SIDED MOUNTING ONLY.
- 4. CONNECTOR PAD LAYOUT PER SFP MSA, WILL ACCOMMODATE MOLEX CONNECTOR SERIES 74441 OR EQUIVALENT.

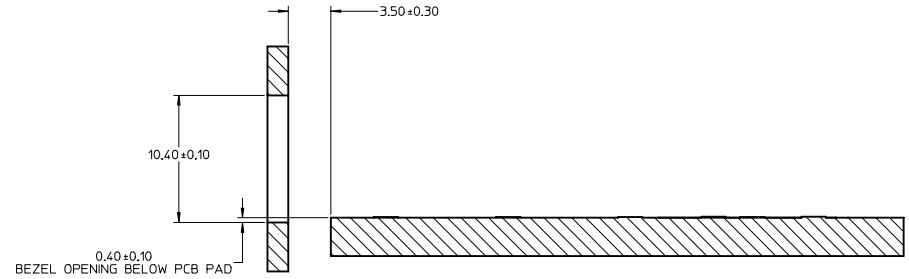
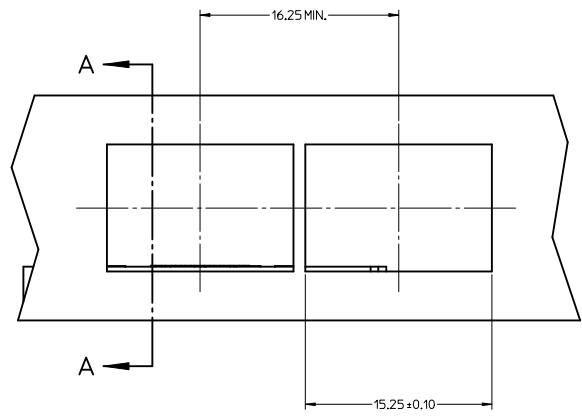
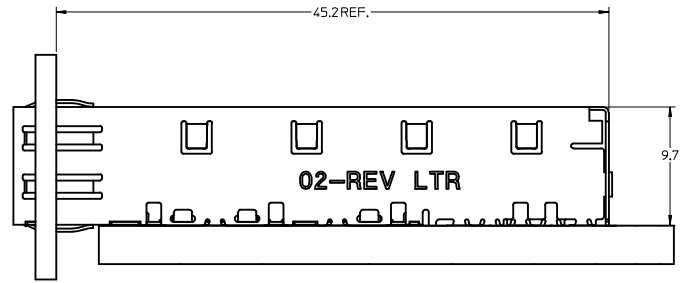


THIS AREA DENOTES COMPONENT KEEP-OUT (TRACES ALLOWED)

SEE KEEP-OUT DETAIL

SEE REVISION TABLE IEC NO: CPG2015-2800 DRAWN BY: DRWNLU20 CHECKED BY: CHYKSYANG16 APPROVED BY: APPRRCHE08 DATE: 2014/12/02 DATE: 2014/12/03 DATE: 2014/12/22	QUALITY SYMBOLS	GENERAL TOLERANCES (UNLESS SPECIFIED)	DIMENSION STYLE	SCALE	DESIGN UNITS	THIRD ANGLE PROJECTION
	▽=0	mm	MM ONLY	8:1	METRIC	☉
	▽=0	INCH	4 PLACES ± ---	DRAWN BY: CCOX	DATE: 2007/01/18	TITLE: SFP ONE PIECE CAGE PRESS-FIT (0.090 LEGS)
	▽=0	ANGULAR ± 1 °	3 PLACES ± ---	CHECKED BY: RMAHMOOD	DATE: 2007/01/18	APPROVED BY: RMAHMOOD
▽=0	DRAFT WHERE APPLICABLE MUST REMAIN WITHIN DIMENSIONS	2 PLACES ± 0.13	1 PLACE ± 0.25	0 PLACE ±	MATERIAL NO: 747370002	DOCUMENT NO: SD-74737-002
					molex THIS DRAWING CONTAINS INFORMATION THAT IS PROPRIETARY TO MOLEX INCORPORATED AND SHOULD NOT BE USED WITHOUT WRITTEN PERMISSION	
					SHEET NO. 2 OF 4	

20 19 18 17 16 15 14 13 12 11 10 9 8 7 6 5 4 3 2 1



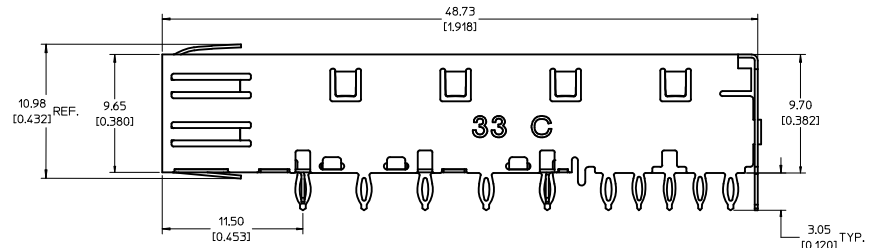
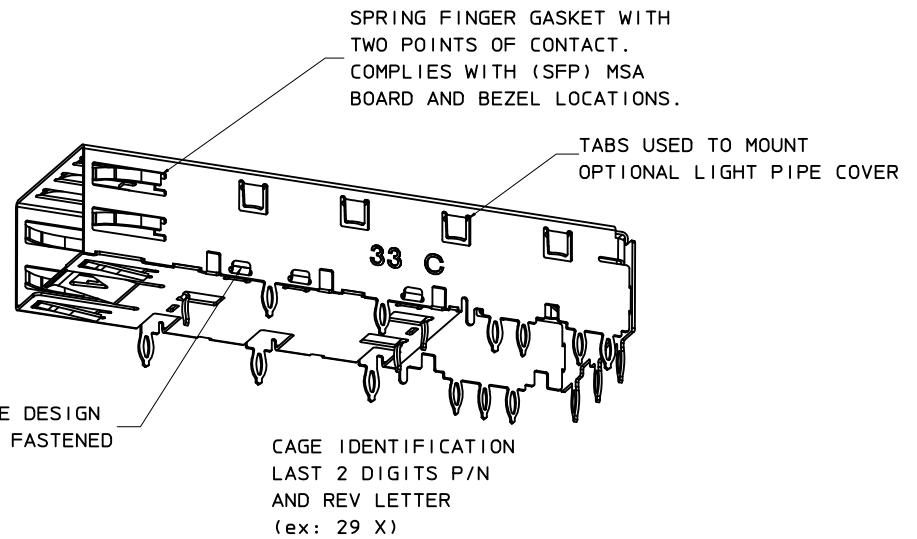
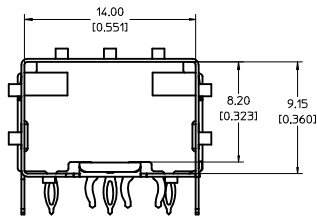
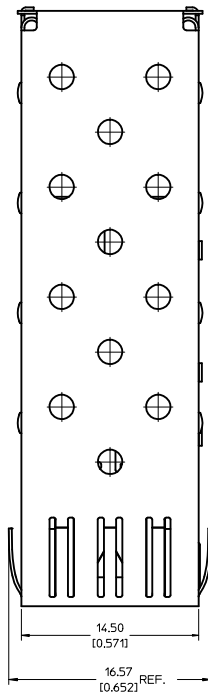
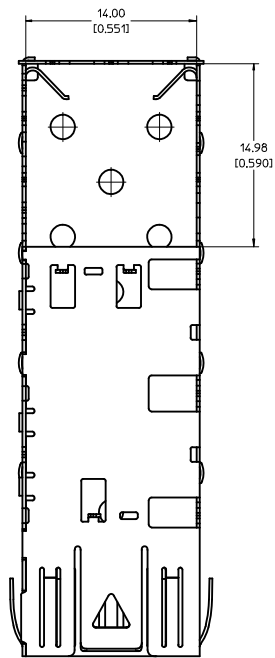
SECTION A-A

SEE REVISION TABLE EC NO: CPG2015-2800 DRW: LUL20 2014/12/02 CHK: DSYANG 2014/12/03 APPR: RCHEN08 2014/12/22	QUALITY SYMBOLS ∇=0 ∇=0 ∇=0	GENERAL TOLERANCES (UNLESS SPECIFIED) <table border="1"> <tr> <th></th> <th>mm</th> <th>INCH</th> </tr> <tr> <td>4 PLACES</td> <td>± 0.15</td> <td>± 0.005</td> </tr> <tr> <td>3 PLACES</td> <td>± 0.20</td> <td>± 0.008</td> </tr> <tr> <td>2 PLACES</td> <td>± 0.25</td> <td>± 0.010</td> </tr> <tr> <td>1 PLACE</td> <td>± 0.30</td> <td>± 0.012</td> </tr> <tr> <td>0 PLACE</td> <td>± 0.35</td> <td>± 0.014</td> </tr> </table>		mm	INCH	4 PLACES	± 0.15	± 0.005	3 PLACES	± 0.20	± 0.008	2 PLACES	± 0.25	± 0.010	1 PLACE	± 0.30	± 0.012	0 PLACE	± 0.35	± 0.014	DIMENSION STYLE MM ONLY	SCALE 5:1	DESIGN UNITS METRIC	THIRD ANGLE PROJECTION
		mm	INCH																					
	4 PLACES	± 0.15	± 0.005																					
	3 PLACES	± 0.20	± 0.008																					
2 PLACES	± 0.25	± 0.010																						
1 PLACE	± 0.30	± 0.012																						
0 PLACE	± 0.35	± 0.014																						
DRAWN BY CCOX DATE 2007/01/18	CHECKED BY RMAHMOOD DATE 2007/01/18	APPROVED BY RMAHMOOD DATE 2007/01/18	MATERIAL NO. 747370002		DOCUMENT NO. SD-74737-002	SHEET NO. 3 OF 4																		
ANGULAR ± 1 ° DRAFT WHERE APPLICABLE MUST REMAIN WITHIN DIMENSIONS		THIS DRAWING CONTAINS INFORMATION THAT IS PROPRIETARY TO MOLEX INCORPORATED AND SHOULD NOT BE USED WITHOUT WRITTEN PERMISSION																						

19 18 17 16 15 14 13 12 11 10 9 8 7 6 5 4 3 2 1

DATE	REV	REVISION TABLE
2007/01/17	A	INITIAL RELEASE
2007/01/24	B	UPDATED VIEWS
2007/02/08	C	ADDED NOTE 5
2007/03/06	D	ADDED SHEETS 2 AND 3
2007/01/23	E	UPDATED 2D VIEWS TO REFLECT CHG'S MADE TO EM-74737-002 REV E.
2007/04/25	F	[1] ADDED REV SHEET, [2] UPDATED REV NOTES A-D, [3] UPDATED DRAWING TO REFLECT CHG'S MADE TO EM-74737-002-ASSY REV D, [4] ON SHT1 ROTATED BTM_VIEW 180 DEGREES.
2007/11/27	G	[1] UPDATED VIEWS TO MATCH EM-74737-002-ASSY REV E.
2014/12/02	H	1. ADDED *MM 3D MODEL: EM-74737-002-ASSY* ON LEFT TOP CORNER. [SHEET 1] 2. ADDED NOTE 6, 7, 8. [SHEET 1] 3. CHANGED NOTE5 TO *NO RoHS EXEMPTIONS*. [SHEET 1] 4. REMOVED ALL INCH UNIT. [SHEET 1~3]

SEE REVISION TABLE IEC NO: CPG2015-2800 DRAWN BY: DRWNLJL20 2014/12/02 CHECKED BY: CHYKSYANG16 2014/12/03 APPROVED BY: APPRRCHE08 2014/12/22 REV:	QUALITY SYMBOLS	GENERAL TOLERANCES (UNLESS SPECIFIED)	DIMENSION STYLE	SCALE	DESIGN UNITS	THIRD ANGLE PROJECTION
	▽=0	4 PLACES ± mm INCH	MM ONLY	1:1	METRIC	☉
	▽=0	3 PLACES ± 0.13				
	▽=0	2 PLACES ± 0.25				
	ANGULAR ± 1 °	DRAFT WHERE APPLICABLE MUST REMAIN WITHIN DIMENSIONS	DRAWN BY: CCOX DATE: 2007/01/18	TITLE: SFP ONE PIECE CAGE PRESS-FIT (0.090 LEGS)		
			CHECKED BY: RMAHMOOD DATE: 2007/01/18			
			APPROVED BY: RMAHMOOD DATE: 2007/01/18			
			MATERIAL NO: 747370002	DOCUMENT NO: SD-74737-002	SHEET NO: 4 OF 4	
			THIS DRAWING CONTAINS INFORMATION THAT IS PROPRIETARY TO MOLEX INCORPORATED AND SHOULD NOT BE USED WITHOUT WRITTEN PERMISSION			

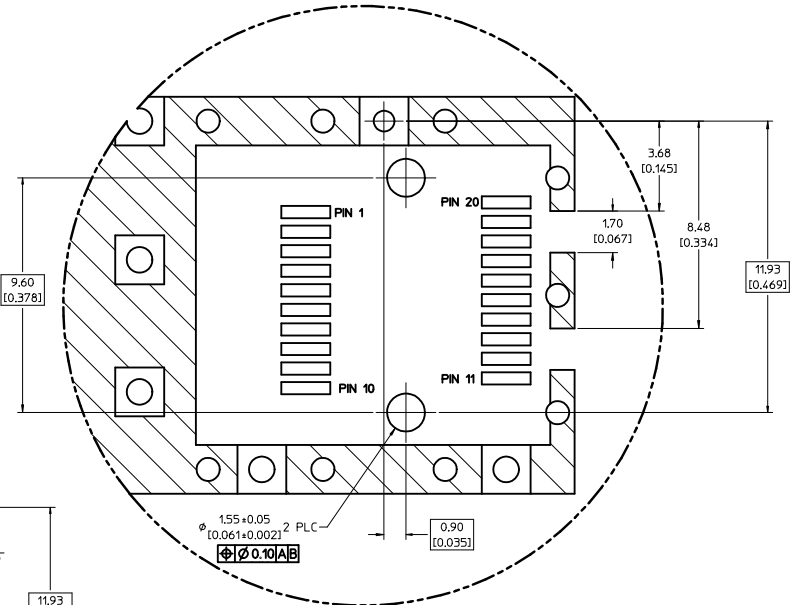
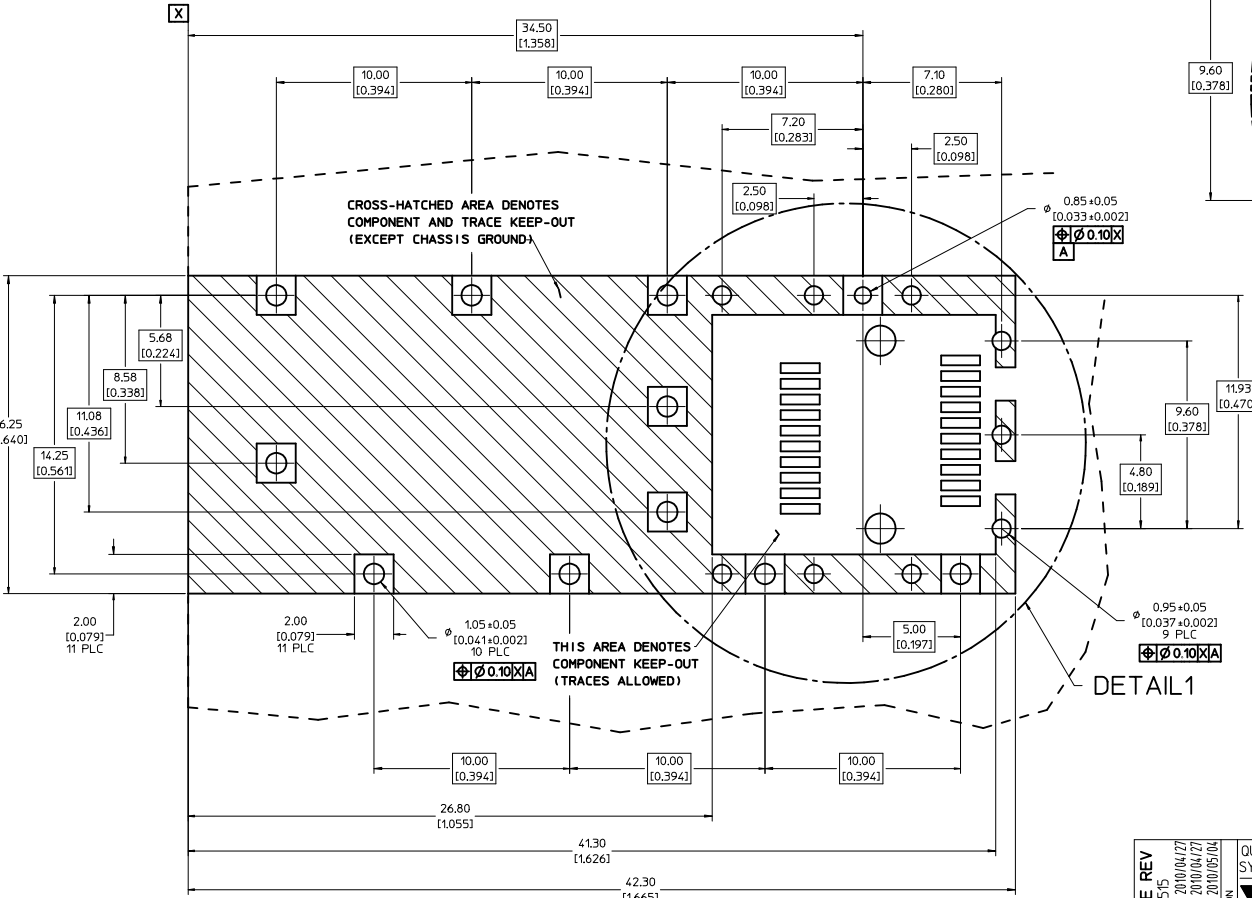


NOTES:

- PRESS FIT LEGS, 0.120 INCHES LONG.
1.57 [0.062] MINIMUM PCB THICKNESS.
- THIS CAGE IS FOR SINGLE SIDED USE ONLY.
- CAN BE USED WITH THE FOLLOWING LIGHT PIPE PART NUMBERS:
747260001 - LIGHT PIPE FROM BACK TO TOP
(REFER TO DOCUMENT SD-74726-001)
747260002 - LIGHT PIPE FROM SIDE TO TOP
(REFER TO DOCUMENT SD-74726-002)
- MATERIAL: COPPER ALLOY
PLATING: PRE-PLATED WITH NICKEL
- THIS PART MEETS THE RESTRICTION OF HAZARDOUS SUBSTANCES IN ELECTRICAL AND ELECTRONIC EQUIPMENT (ROHS) DIRECTIVE (2002/95/EC).

REV DIMS-CAGE REV EC NO: USY2010-0515 DRAWN BY: CHYOKI JANOTA APPROV: K JANOTA 2010/04/27 2010/05/04	QUALITY SYMBOLS ▽=0 ▽=0	GENERAL TOLERANCES (UNLESS SPECIFIED): <table border="1"> <tr> <th></th> <th>mm</th> <th>INCH</th> </tr> <tr> <td>4 PLACES</td> <td>±0.05</td> <td>±0.002</td> </tr> <tr> <td>3 PLACES</td> <td>±0.025</td> <td>±0.001</td> </tr> <tr> <td>2 PLACES</td> <td>±0.13</td> <td>±0.01</td> </tr> <tr> <td>1 PLACE</td> <td>±0.25</td> <td>±0.01</td> </tr> </table>			mm	INCH	4 PLACES	±0.05	±0.002	3 PLACES	±0.025	±0.001	2 PLACES	±0.13	±0.01	1 PLACE	±0.25	±0.01	DIMENSION STYLE MM/IN	SCALE 5:1	DESIGN UNITS METRIC	THIRD ANGLE PROJECTION
			mm	INCH																		
4 PLACES	±0.05	±0.002																				
3 PLACES	±0.025	±0.001																				
2 PLACES	±0.13	±0.01																				
1 PLACE	±0.25	±0.01																				
DRAFT WHERE APPLICABLE MUST REMAIN WITHIN DIMENSIONS		MATERIAL NO. 747370033	DATE 2009/09/28	DATE 2009/09/28	DATE 2009/09/28	TITLE SFP ONE PIECE CAGE PRESS-FIT (0.120 LEGS) W/ MODIFIED LATCH TANG																
		MOLEX INCORPORATED		MOLEX INCORPORATED		SHEET NO. 1 OF 3																

- PADS AND VIAS ARE CHASSIS GROUND.
- HOLE LAYOUT SHOWN IS FOR SINGLE SIDED MOUNTING ONLY.
- CONNECTOR PAD LAYOUT PER SFP MSA, WILL ACCOMMODATE MOLEX CONNECTOR SERIES 74441 OR EQUIVALENT.

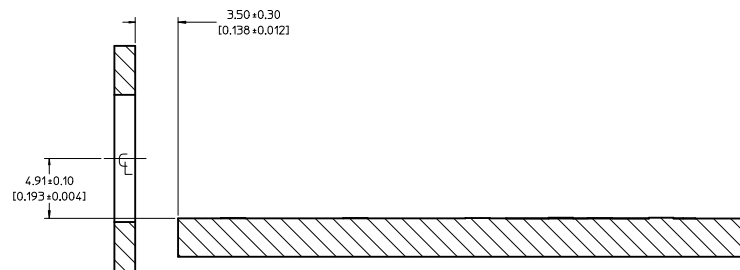
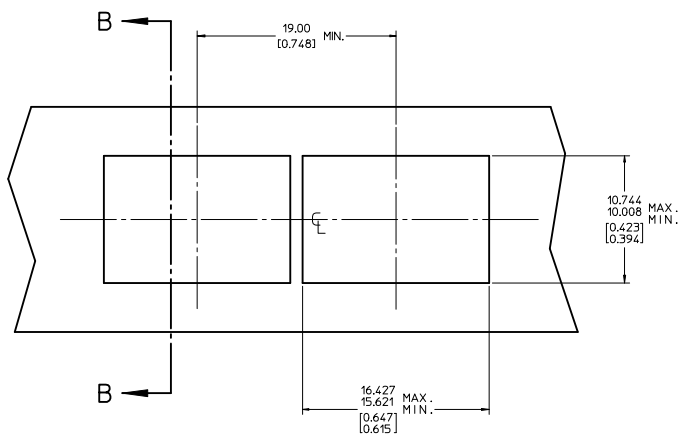
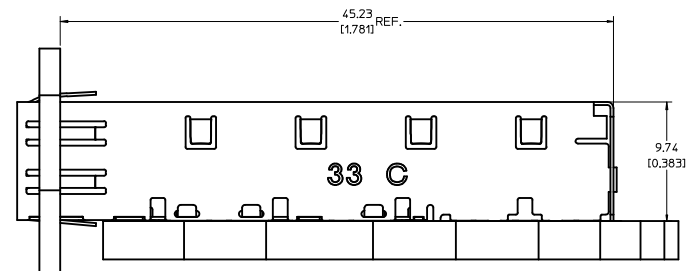


DETAIL 1
SCALE 10:1

DETAIL 1

REV DIMS-CAGE REV IEC NO: USY2010-0515 DRAWN BY: CHYK-K LAMOTA CHECKED BY: APPR-K LAMOTA DATE: 2010/04/27 DATE: 2010/05/04	QUALITY SYMBOLS ▽=0 ▽=0	GENERAL TOLERANCES (UNLESS SPECIFIED)		DIMENSION STYLE MM/IN	SCALE 8:1	DESIGN UNITS METRIC	THIRD ANGLE PROJECTION		
		4 PLACES ±--- ±---	3 PLACES ±--- ±0.005	2 PLACES ±0.13 ±0.01	1 PLACE ±0.25 ±---	ANGULAR ± 1 °	DRAWN BY: JRESENDE DATE: 2009/09/28	CHECKED BY: JRESENDE DATE: 2009/09/28	TITLE: SFP ONE PIECE CAGE PRESS-FIT (0.120 LEGS) W/ MODIFIED LATCH TANG
		DRAFT WHERE APPLICABLE MUST REMAIN WITHIN DIMENSIONS		MATERIAL NO: 747370033	DOCUMENT NO: SD-74737-0033	SHEET NO: 2 OF 3	MOLEX INCORPORATED		
		THIS DRAWING CONTAINS INFORMATION THAT IS PROPRIETARY TO MOLEX INCORPORATED AND SHOULD NOT BE USED WITHOUT WRITTEN PERMISSION							

20 19 18 17 16 15 14 13 12 11 10 9 8 7 6 5 4 3 2 1



SECTION B-B

REV DIMS-CAGE REV IEC NO: USY2010-0515 DRAWN/SECRET 2010/04/27 CHYOKI/ANITA 2010/04/27 APPR:K/ANITA 2010/05/04 REV DESCRIPTION	QUALITY SYMBOLS	GENERAL TOLERANCES (UNLESS SPECIFIED)	DIMENSION STYLE	SCALE	DESIGN UNITS	THIRD ANGLE PROJECTION	
	▽=0 ▽=0	mm INCH 4 PLACES ± --- ± --- 3 PLACES ± --- ± 0.005 2 PLACES ± 0.13 ± 0.01 1 PLACE ± 0.25 ± --- ANGULAR ± 1 °	MM/IN	5:1	METRIC	DRAWN BY DATE JRESENDE 2009/09/28 CHECKED BY DATE JRESENDE 2009/09/28 APPROVED BY DATE JRESENDE 2009/09/28	
	DRAFT WHERE APPLICABLE MUST REMAIN WITHIN DIMENSIONS	MATERIAL NO. 747370033	DOCUMENT NO. SD-74737-0033	TITLE SFP ONE PIECE CAGE PRESS-FIT (0.120 LEGS) W/ MODIFIED LATCH TANG		MOLEX INCORPORATED	SHEET NO. 3 OF 3
	THIS DRAWING CONTAINS INFORMATION THAT IS PROPRIETARY TO MOLEX INCORPORATED AND SHOULD NOT BE USED WITHOUT WRITTEN PERMISSION						

19 18 17 16 15 14 13 12 11 10 9 8 7 6 5 4 3 2 1