

**PLEASE CHECK WWW.MOLEX.COM FOR LATEST PART INFORMATION**

**Part Number:** [0760440001](#)  
**Status:** **Active**  
**Overview:** [SFP+ Stacked Multi-Port Connectors](#)  
**Description:** Small Form-factor Pluggable Plus (SFP+) Stacked 2-by-1 Multi-Port Connector with 4 Lightpipe Ports, EMI Metal Gasket, 40 Circuits, Tin (Sn)/Lead(Pb) Tails

**Documents:**

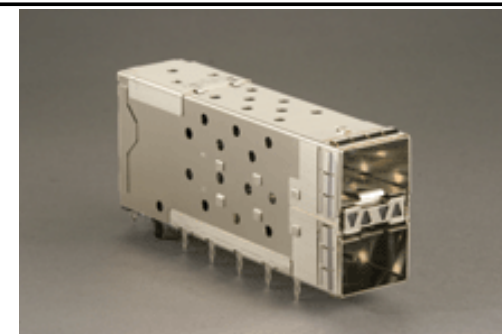
<a href="#">Packaging Specification (PDF)</a>	<a href="#">Drawing (PDF)</a>
<a href="#">3D Model</a>	<a href="#">Product Specification PS-75310-001 (PDF)</a>
<a href="#">Application Specification (PDF)</a>	<a href="#">Related Catalog Page (PDF)</a>

**General**

Product Family	I/O Connectors
Series	76044
Application	Module-to-Board
Component Type	Receptacle
Overview	<a href="#">SFP+ Stacked Multi-Port Connectors</a>
Product Name	SFP Plus
Type	N/A

**Physical**

Boot Color	N/A
Circuits (Loaded)	40
Circuits (maximum)	40
Circuits Detail	40
Color - Resin	Black
Color - Resin	Clear (Blue Tint)
Durability (mating cycles) min	100 cycles
Flammability	94V-0
Gender	Female
Keying to Mating Part	None
Lock to Mating Part	Yes
Material - Metal	Brass
Material - Metal	Phosphor Bronze
Material - Plating Mating	Gold
Material - Plating Termination	Tin-Lead
Material - Resin	High Temperature Thermoplastic
Material - Resin	Polycarbonate
Number of Rows	2
Orientation	Right Angle
PC Tail Length (in)	0.081 In
PC Tail Length (mm)	2.07 mm
PCB Locator	Yes
PCB Retention	Yes
PCB Thickness Recommended (in)	0.062 In
PCB Thickness Recommended (mm)	1.57 mm
Packaging Type	Tray
Panel Mount	No
Pitch - Mating Interface (in)	0.031 In
Pitch - Mating Interface (mm)	0.80 mm
Pitch - Term. Interface (in)	0.031 In
Pitch - Term. Interface (mm)	0.80 mm
Plating min: Mating (µin)	30.4
Plating min: Mating (µm)	0.76
Plating min: Termination (µin)	30.4
Plating min: Termination (µm)	0.76
Polarized to Mating Part	Yes



Series image - Reference only

**EU RoHS**

**RoHS Compliant by Exemption**

**China RoHS**



Pb

**Need more information on product environmental compliance?**

Email [productcompliance@molex.com](mailto:productcompliance@molex.com)  
Please visit the [Contact Us](#) section for any non-product compliance questions.

**Search Parts in this Series**

[76044 Series](#)

**Use With**

[0759510999 SFP Dust Plug](#),

**Application Tooling**

*Tooling specifications and manuals are found by selecting the products below. Crimp Height Specifications are then contained in the Application Tooling Specification document.*

**Global**

Description	Product #
SFP Extraction Tool,	<a href="#">0622029930</a>
2 x 1 Medium	

Polarized to PCB	Yes
Ports	2
Surface Mount Compatible (SMC)	No
Temperature Range - Operating	-40°C to +85°C
Termination Interface: Style	Through Hole - Compliant Pin
Waterproof / Dustproof	No

**Electrical**

Current - Maximum	0.500 Amp
Grounding to Panel	None
Shield Type	EMI Gasket
Shielded	Yes
UL	E29179
Voltage - Maximum	120V AC(RMS)/DC

**Material Info**

**Reference - Drawing Numbers**

Product Specification	PS-75310-001
Sales Drawing	SD-76044-001

This document was generated on 01/14/2009

**PLEASE CHECK [WWW.MOLEX.COM](http://WWW.MOLEX.COM) FOR LATEST PART INFORMATION**



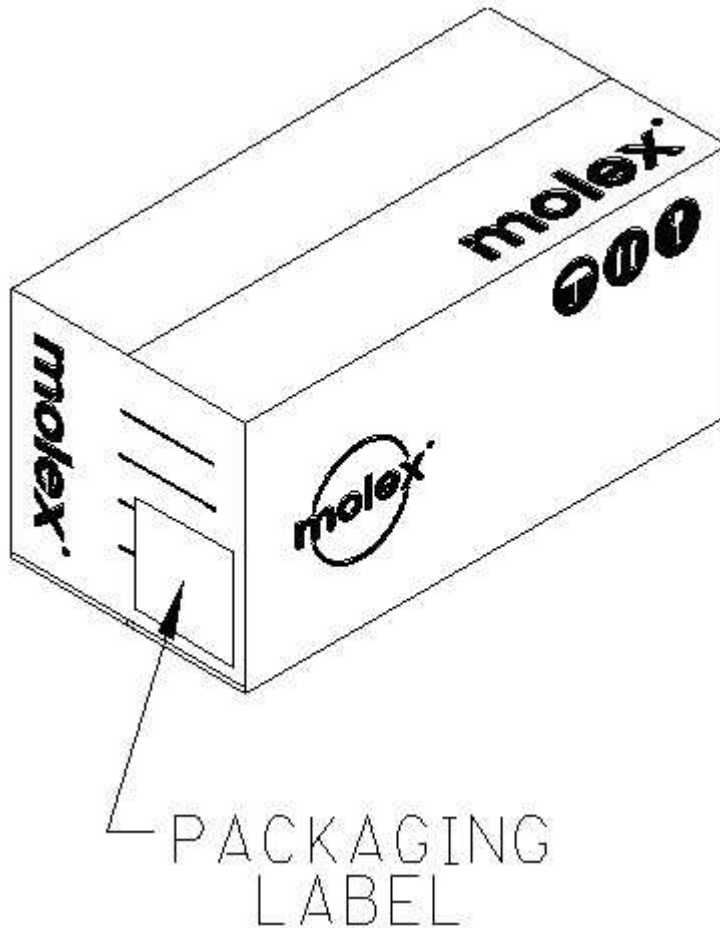
# PACKAGING SPECIFICATION

THE STANDARD PACKAGING CARTONS SHALL CONSIST OF:

PRIMARY CARTON MATERIAL NUMBER 96707-0001 or 96707-1001

OVERALL OUTSIDE DIMENSIONS: LENGTH 14.5" WIDTH 7.2" HEIGHT 7.2"

ONE PACKING LABEL IS REQUIRED PER PRIMARY CARTON. APPLY LABEL TO LOWER RIGHT SIDE OF THE PRIMARY CARTON SHOWN PER FIGURE 1.



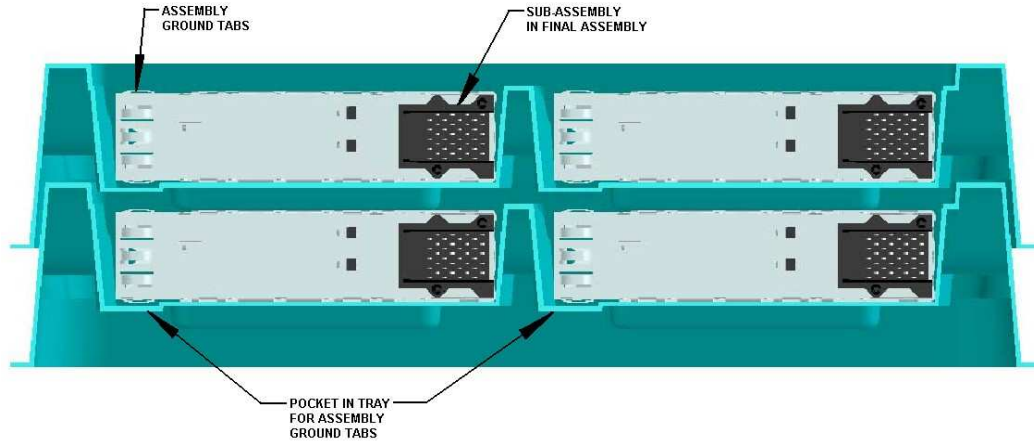
**FIGURE 1**  
PRIMARY CARTON

REVISION: <b>C</b>	ECR/ECN INFORMATION: EC No: <b>UCP2008-0788</b> DATE: <b>2007 / 10 / 05</b>	TITLE: <b>PACKAGING SPECIFICATION STACKED SFP/(+) 2X1 CONNECTOR ASSEMBLIES</b>	SHEET No. <b>1 of 5</b>
DOCUMENT NUMBER: <b>PK-75462-001</b>	CREATED / REVISED BY: <b>LONG</b>	CHECKED BY: <b>LONG</b>	APPROVED BY: <b>NELSON</b>



# PACKAGING SPECIFICATION

THE SFP 2X1 STACKED ASSEMBLIES ARE TO BE PLACED IN THE TRAY POCKETS SO THE ASSEMBLIES ARE RESTING ON THEIR SIDE. THE ASSEMBLIES SHOULD BE PLACED IN THE POCKETS SO THEIR TAILS ARE POINTING IN THE DIRECTION OPPOSITE OF THE FINGER SLOT THAT RUNS ACROSS THE POCKETS AND THE (2) SMALL RIBS ARE IN-BETWEEN THE TAILS. THE GROUND TABS ON THE FRONT OF THE ASSEMBLY SHOULD BE LOCATED IN THE SLOT PROVIDED IN THE POCKET AS SHOWN IN FIGURES 2 AND 2A.



**FIGURE 2**  
TYPICAL TRAY / SFP 2X1 STACKED ASSEMBLY PLACEMENT



**FIGURE 2A**  
TYPICAL TRAY / SFP 2X1 STACKED ASSEMBLY PLACEMENT

**PRIMARY CARTON TRAY LOADING REQUIREMENTS REFER TO FIGURE 3.**

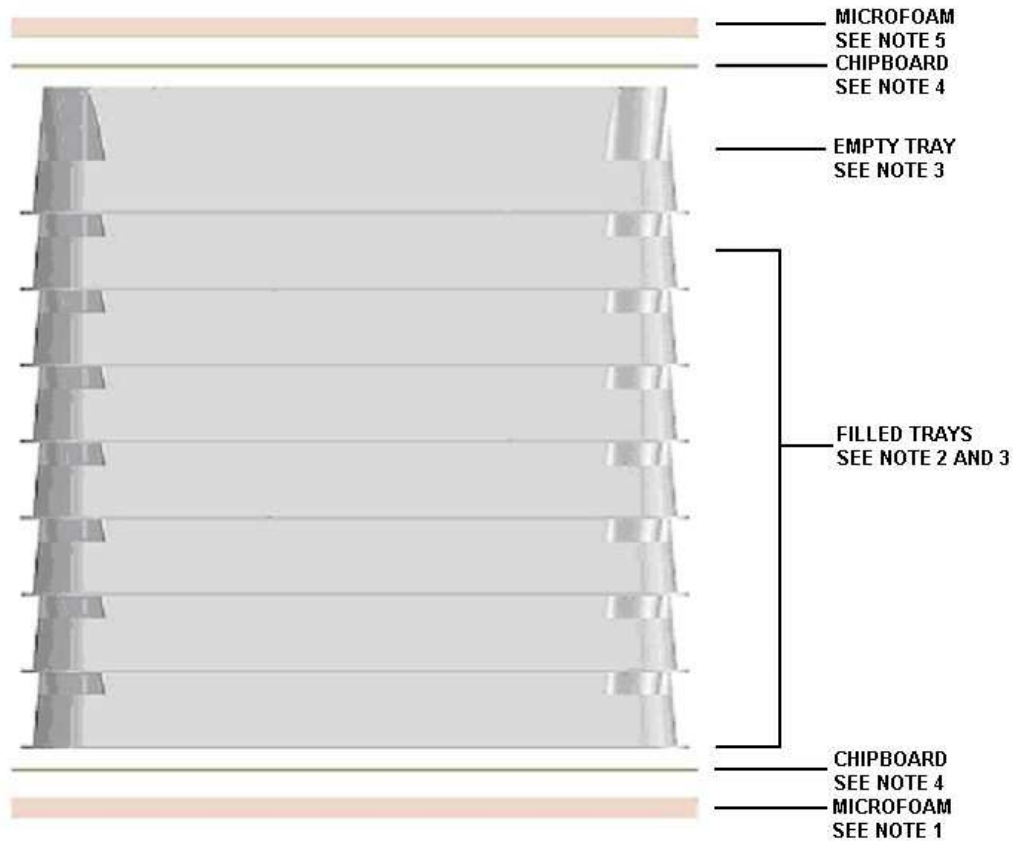
REVISION: <b>C</b>	ECR/ECN INFORMATION: EC No: <b>UCP2008-0788</b> DATE: <b>2007 / 10 / 05</b>	TITLE: <b>PACKAGING SPECIFICATION STACKED SFP/(+) 2X1 CONNECTOR ASSEMBLIES</b>	SHEET No. <b>2 of 5</b>
DOCUMENT NUMBER: <b>PK-75462-001</b>	CREATED / REVISED BY: <b>LONG</b>	CHECKED BY: <b>LONG</b>	APPROVED BY: <b>NELSON</b>



# PACKAGING SPECIFICATION

## PACKAGING INSTRUCTION NOTES:

1. ONE SHEET OF MICROFOAM MATERIAL NUMBER 96720-0001 IS TO BE PLACED IN THE BOTTOM OF CARTON.
2. FILLED TRAYS 70180-0008 TO BE STACKED 7 HIGH.
3. ONE EMPTY TRAY TO BE PLACED ON THE TOP OF THE FILLED TRAYS, SO A TOTAL OF 8 TRAYS WILL BE IN THE FINAL STACK.
4. ONE SHEET OF CHIPBOARD MATERIAL NUMBER 96720-0002 TO BE PLACED ON THE TOP TRAY AND THE PART IDENTIFICATION LABEL SHOULD BE PLACED IN THE CENTER OF THE CHIPBOARD ON THE EXPOSED SIDE. ONE SHEET OF CHIPBOARD MATERIAL NUMBER 96720-0002 TO BE PLACED IN THE BOTTOM OF THE CARTON.
5. MICROFOAM MATERIAL NUMBER 96720-0001 TO BE PLACED ON TOP OF THE CHIPBOARD. ENOUGH MICROFOAM IS TO USED TO FILL THE REMAINDER OF THE CARTON, SO THE TRAYS CANNOT MOVE DURING HANDLING OR SHIPPING.
6. STRETCH WRAP (P/N: 85-25-0001) ENTIRE TRAY STACK AND CHIPBOARD TOGETHER WITH TWO WRAPS MINIMUM IN BOTH DIRECTIONS BEFORE PLACING INTO CARTON.

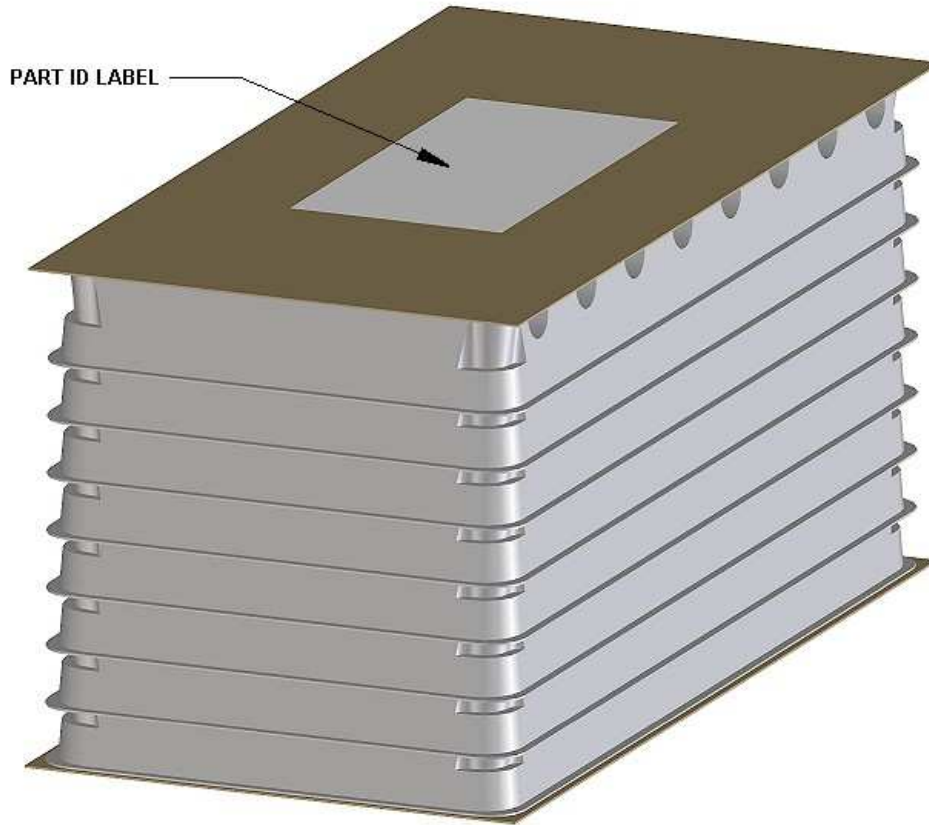


**FIGURE 3**  
TRAY STACKING

REVISION: <b>C</b>	ECR/ECN INFORMATION: EC No: <b>UCP2008-0788</b> DATE: <b>2007 / 10 / 05</b>	TITLE: <b>PACKAGING SPECIFICATION STACKED SFP/(+) 2X1 CONNECTOR ASSEMBLIES</b>	SHEET No. <b>3 of 5</b>
DOCUMENT NUMBER: <b>PK-75462-001</b>	CREATED / REVISED BY: <b>LONG</b>	CHECKED BY: <b>LONG</b>	APPROVED BY: <b>NELSON</b>



# PACKAGING SPECIFICATION



**FIGURE 4**  
CHIPBOARD LABEL LOCATION

REVISION: <b>C</b>	ECR/ECN INFORMATION: EC No: <b>UCP2008-0788</b> DATE: <b>2007 / 10 / 05</b>	TITLE: <b>PACKAGING SPECIFICATION STACKED SFP/(+) 2X1 CONNECTOR ASSEMBLIES</b>	SHEET No. <b>4 of 5</b>
DOCUMENT NUMBER: <b>PK-75462-001</b>	CREATED / REVISED BY: <b>LONG</b>	CHECKED BY: <b>LONG</b>	APPROVED BY: <b>NELSON</b>



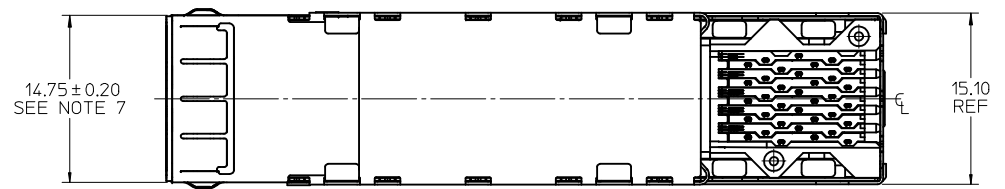
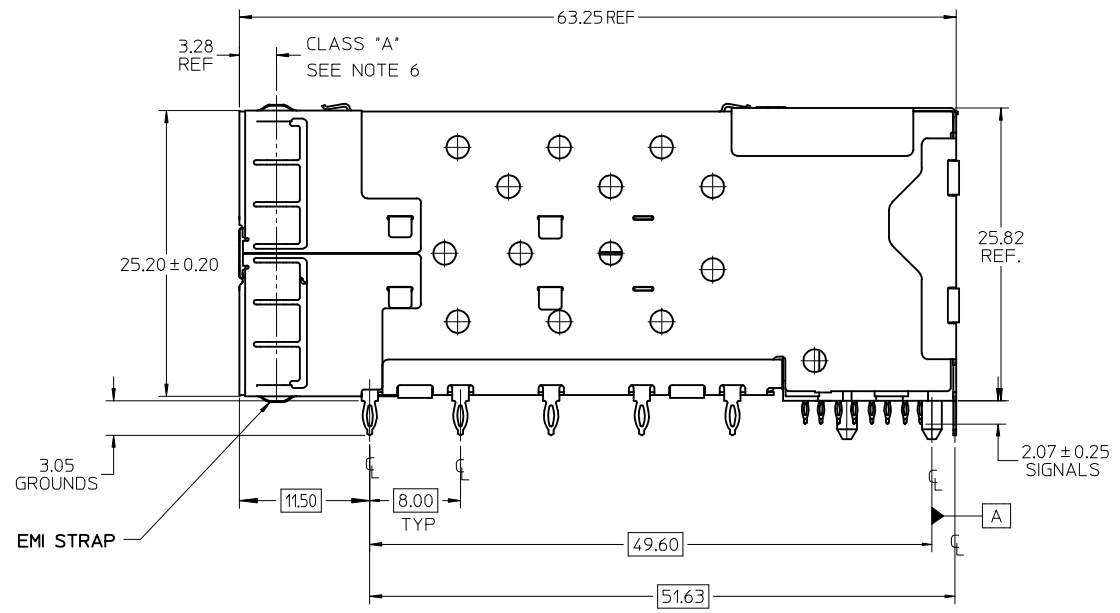
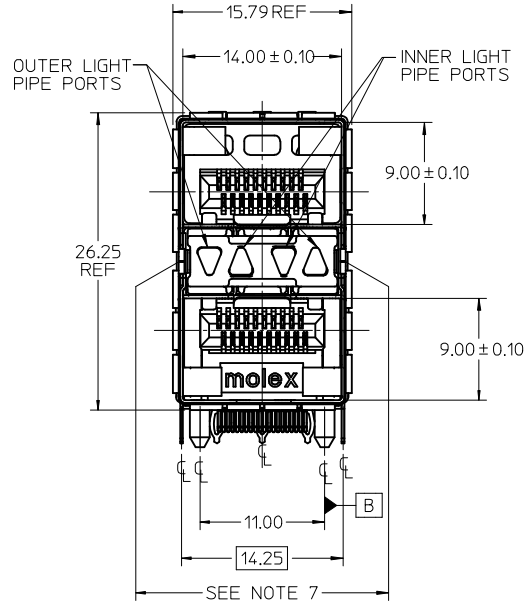
# PACKAGING SPECIFICATION

## PACKAGING QUANTITY REQUIREMENT PER CARTON

SFP 2X1 STACKED ASSEMBLY NUMBER TIN-LEAD / TIN	SFP 2X1 STACKED ASSEMBLIES PER TRAY	FILLED TRAYS PER PRIMARY CARTON
75462-0001 / 75462-5001	18	126
75640-0001 / 75640-5001	18	126
75640-0002 / 75640-5002	18	126
75640-0003 / 75640-5003	18	126
75640-0004 / 75640-5004	18	126
76044-0001 / 76044-5001	18	126
76044-0002 / 76044-5002	18	126
76044-0003 / 76044-5003	18	126
76064-0001 / 76064-5001	18	126
76090-0001 / 76090-5001	18	126
76090-0002 / 76090-5002	18	126
76090-0003 / 76090-5003	18	126
76100-0001 / 76100-5001	18	126

REVISION: <b>C</b>	ECR/ECN INFORMATION: EC No: <b>UCP2008-0788</b> DATE: <b>2007 / 10 / 05</b>	TITLE: <b>PACKAGING SPECIFICATION STACKED SFP/(+) 2X1 CONNECTOR ASSEMBLIES</b>	SHEET No. <b>5 of 5</b>
DOCUMENT NUMBER: <b>PK-75462-001</b>	CREATED / REVISED BY: <b>LONG</b>	CHECKED BY: <b>LONG</b>	APPROVED BY: <b>NELSON</b>

PART NUMBER	DESCRIPTION	VIEW	COMPLIANT TAIL PLATING
760440001	4 LIGHT PORTS	SEE PG 2	TIN / LEAD
760440002	INNER 2 PORTS	SEE PG 2	TIN / LEAD
760440003	OUTER 2 PORTS	SEE PG 2	TIN / LEAD
760445001	4 LIGHT PORTS	SEE PG 2	TIN
760445002	INNER 2 PORTS	SEE PG 2	TIN
760445003	OUTER 2 PORTS	SEE PG 2	TIN

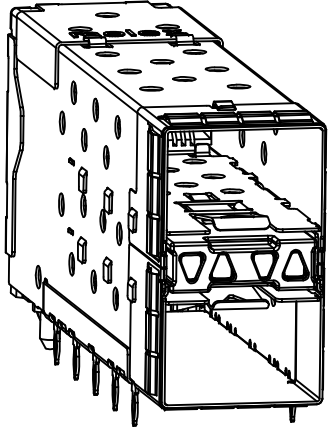


- NOTES
- MATERIAL:
    - EMI STRAPS: PHOS-BRONZE
    - CAGE: NICKEL SILVER, THICKNESS: 0.25mm
    - CONNECTOR HOUSING: GLASS FILLED HIGH TEMP PLASTIC, COLOR: BLACK
    - OVERMOLDED TERMINAL HOUSING: GLASS FILLED HIGH TEMP PLASTIC, COLOR: BLACK
    - TERMINALS: BRASS
    - LIGHT PIPES: POLYCARBONITE, 94 V-0, CLEAR
    - LIGHT PIPE HOUSING: ZINC
  - FINISH
    - EMI STRAPS: 100 MICROINCHES NICKEL OVERALL
    - LIGHT PIPE HOUSING: 150 MICRONS NICKEL OVER 150 MICRONS COPPER
    - TERMINALS: CONTACT AREA: 0.76 MICRONS MIN. HARD GOLD OVER 1.27 MICRONS MIN. NICKEL.
    - COMPLIANT TAIL - TIN/LEAD OPTION: 0.76 - 1.52 MICRONS 90/10 TIN/LEAD OVER 0.76 - 1.52 MICRONS NICKEL
    - COMPLIANT TAIL - TIN OPTION: 0.76 - 1.52 MICRONS TIN OVER 0.76 - 1.52 MICRONS NICKEL
  - REFER TO PS-75310-001 PRODUCT SPEC FOR ALL ELECTRICAL, MECHANICAL, AND ENVIRONMENTAL SPECIFICATIONS.
  - LIGHT PIPE PAD LAYOUT IS FOR 0805 LOW-PROFILE LED PACKAGE, FOR OTHER RECOMMENDED LAYOUTS REFER TO MOLEX'S REPORT TS-75310-001.
  - REFER TO PK-75462-001 FOR ALL PACKAGING SPECIFICATIONS.
  - ALL EXTERIOR SURFACES TO BE CLASS 'B' SURFACE EXCEPT THE UNDER SIDE OF THE CAGE WHERE THE PCB WOULD BE LOCATED AND AS NOTED, THE SURFACES TO CONFORM TO THE MOLEX COSMETIC DOC PS-45499-002.
  - THE OVERALL CAGE WIDTH AT THE VERTICAL CENTER OF THE FRONT EDGE WILL FALL WITHIN THIS DIMENSION: 15.05 +/- 0.30 MM. THIS PORTION OF THE CAGE WILL FLEX INWARD AS THE CAGE IS BEING INSERTED INTO THE BEZEL OPENING.

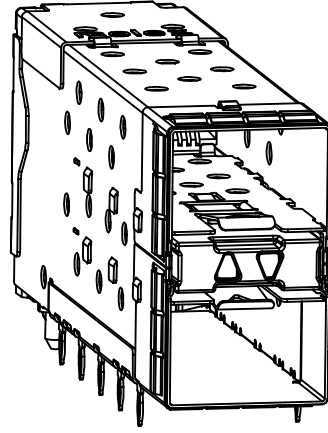
ADD NOTE 7/KEEPOUT'S EC NO: UCP2009-1582 DRW:MSBARRA 2009/01/07 CHKD:BBARKER 2009/01/09 APPR:SMILLER 2009/01/12	QUALITY SYMBOLS ▽=0 ▽=0	GENERAL TOLERANCES (UNLESS SPECIFIED)		DIMENSION STYLE <b>MM ONLY</b>		SCALE <b>3:1</b>	DESIGN UNITS <b>METRIC</b>	THIRD ANGLE PROJECTION			
		4 PLACES ± --- ± ---	3 PLACES ± --- ± ---	2 PLACES ± 0.13 ± ---	1 PLACE ± 0.25 ± ---	DRAWN BY JJANTELEZ10	DATE 11-3-06	<b>STACKED SFP+ 2X1 ASS'Y WITH METAL EMI GASKET AND LIGHTPIPES</b>			
		ANGULAR ± 5 °				CHECKED BY JLONG	DATE 2-1-2007				
		DRAFT WHERE APPLICABLE MUST REMAIN WITHIN DIMENSIONS				APPROVED BY KREGNIER		DATE 2-1-2007	<b>MOLEX INCORPORATED</b>		
				MATERIAL NO. <b>SEE TABLE</b>		DOCUMENT NO. <b>SD-76044-001</b>		SHEET NO. <b>1 OF 4</b>			

THIS DRAWING CONTAINS INFORMATION THAT IS PROPRIETARY TO MOLEX INCORPORATED AND SHOULD NOT BE USED WITHOUT WRITTEN PERMISSION

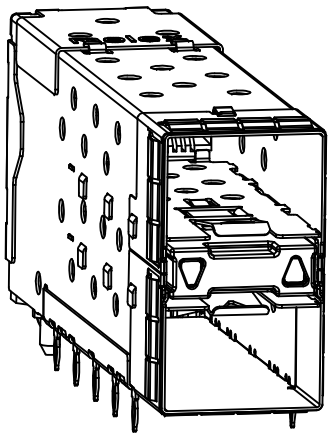




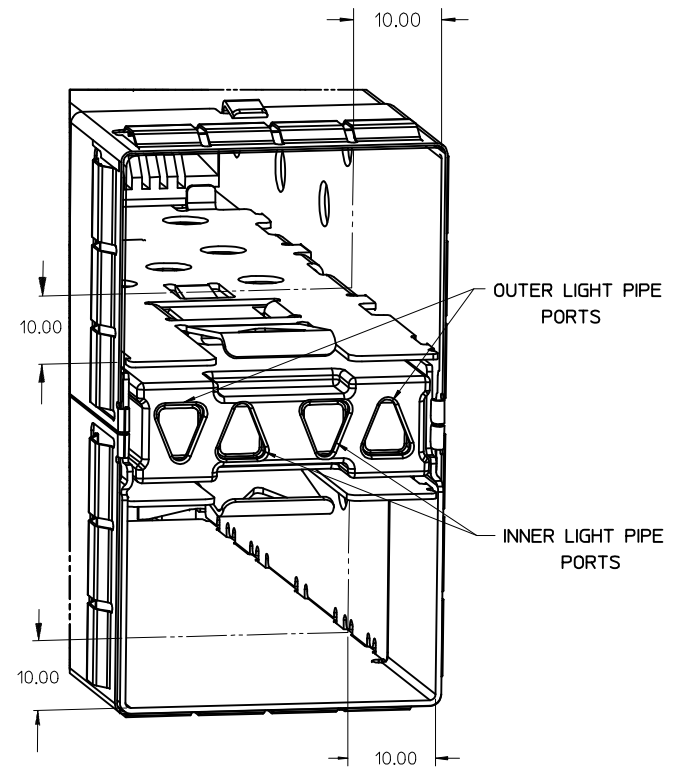
760440001 AND 760445001  
WITH INNER AND OUTER LIGHT PIPES



760440002 AND 760445002  
WITH INNER LIGHT PIPES

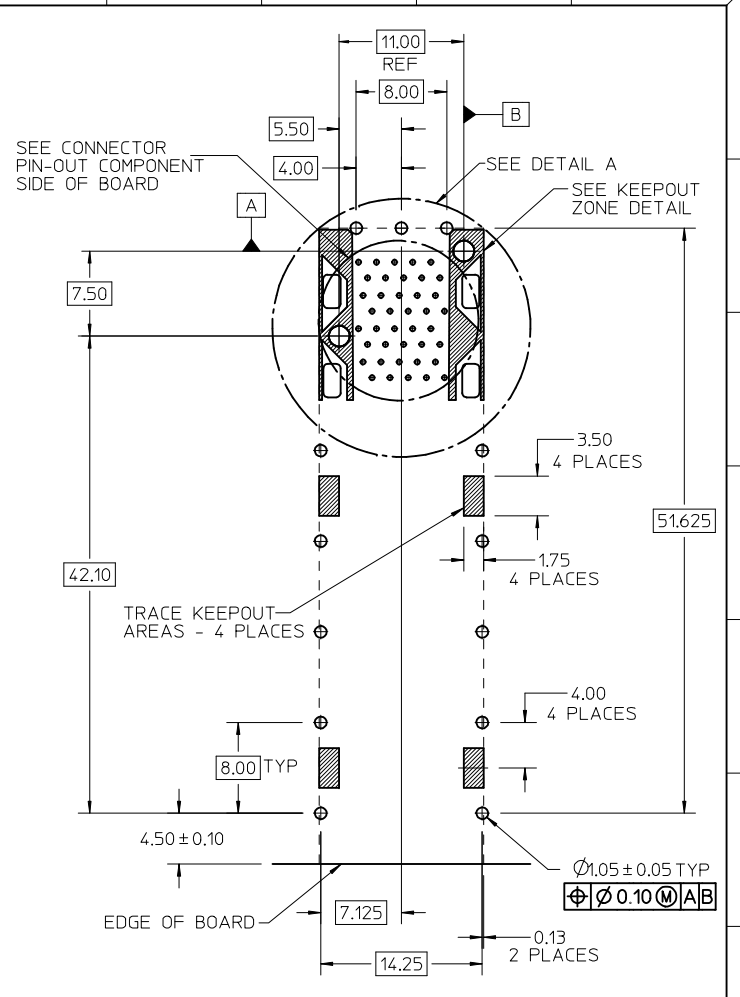
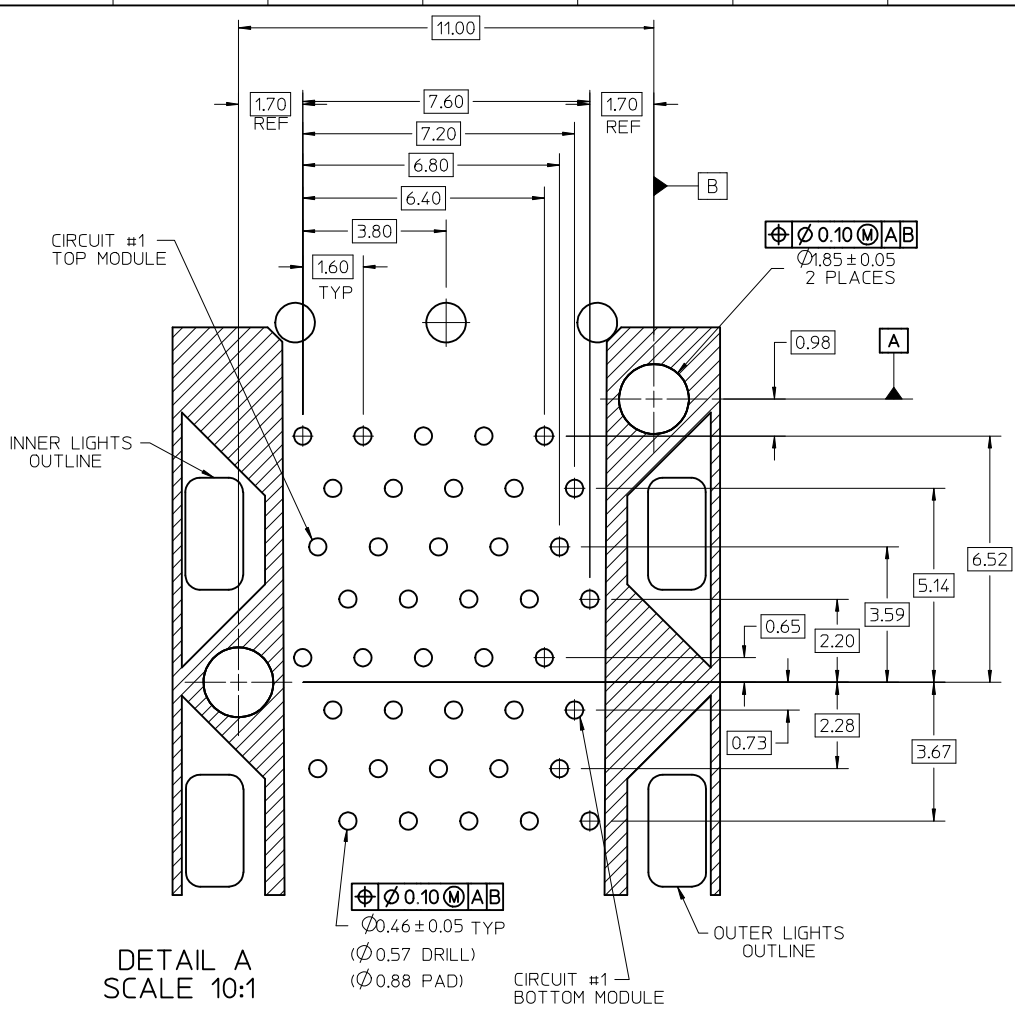


760440003 AND 760445003  
WITH OUTER LIGHT PIPES

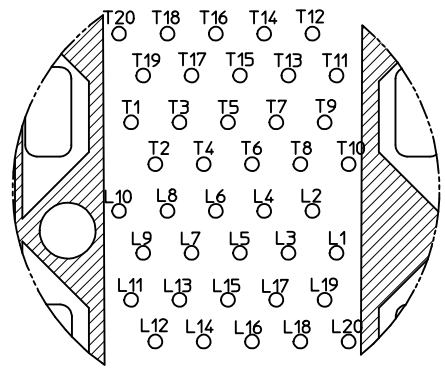


MODULE PORT DETAIL  
10.00MM AREA SETBACK IN CAGE IS TO BE FREE OF ANY HOLES, DIMPLES, SEAMS OR ANY OTHER FEATURES. (4 SIDES PER MODULE PORT)

SEE SHEET 1 EC NO: UCP2009-1582 DRWN:MSIBARRA 2009/01/07 CHKD:BBARKER 2009/01/09 APPR:SMILLER 2009/01/12	QUALITY SYMBOLS ▽=0 ▽=0	GENERAL TOLERANCES (UNLESS SPECIFIED) <table border="1"> <thead> <tr> <th></th> <th>mm</th> <th>INCH</th> </tr> </thead> <tbody> <tr> <td>4 PLACES</td> <td>± .---</td> <td>± .---</td> </tr> <tr> <td>3 PLACES</td> <td>± .---</td> <td>± .---</td> </tr> <tr> <td>2 PLACES</td> <td>± 0.13</td> <td>± .---</td> </tr> <tr> <td>1 PLACE</td> <td>± 0.25</td> <td>± .---</td> </tr> </tbody> </table> ANGULAR ± 5 °		mm	INCH	4 PLACES	± .---	± .---	3 PLACES	± .---	± .---	2 PLACES	± 0.13	± .---	1 PLACE	± 0.25	± .---	DIMENSION STYLE MM ONLY	SCALE 3:1	DESIGN UNITS METRIC	THIRD ANGLE PROJECTION
		mm	INCH																		
	4 PLACES	± .---	± .---																		
	3 PLACES	± .---	± .---																		
	2 PLACES	± 0.13	± .---																		
1 PLACE	± 0.25	± .---																			
DRAWN BY JJANTELEZIO	DATE 11-3-06	TITLE STACKED SFP+ 2X1 ASS'Y WITH METAL EMI GASKET AND LIGHTPIPES																			
CHECKED BY JLONG	DATE 2-1-2007	MOLEX INCORPORATED																			
APPROVED BY KREGNIER	DATE 2-1-2007	MATERIAL NO. SEE TABLE																			
DRAFT WHERE APPLICABLE MUST REMAIN WITHIN DIMENSIONS		SIZE C		DOCUMENT NO. SD-76044-001			SHEET NO. 2 OF 4														



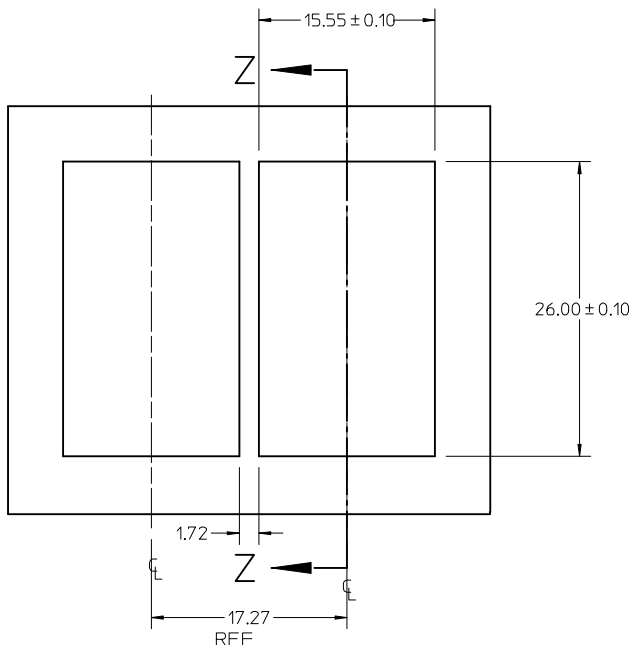
RECOMMENDED PCB LAYOUT - COMPONENT SIDE  
 RECOMMENDED PCB THICKNESS - 2.36 MM (.093 INCH)  
 THE ENTIRE AREA OF THE CONNECTOR FOOTPRINT TO BE CONSIDERED THE KEEP OUT AREA FOR COMPONENTS (OTHER THAN LIGHT PIPE LED'S). THIS AREA IS INDICATED BY THE DASHED LINE



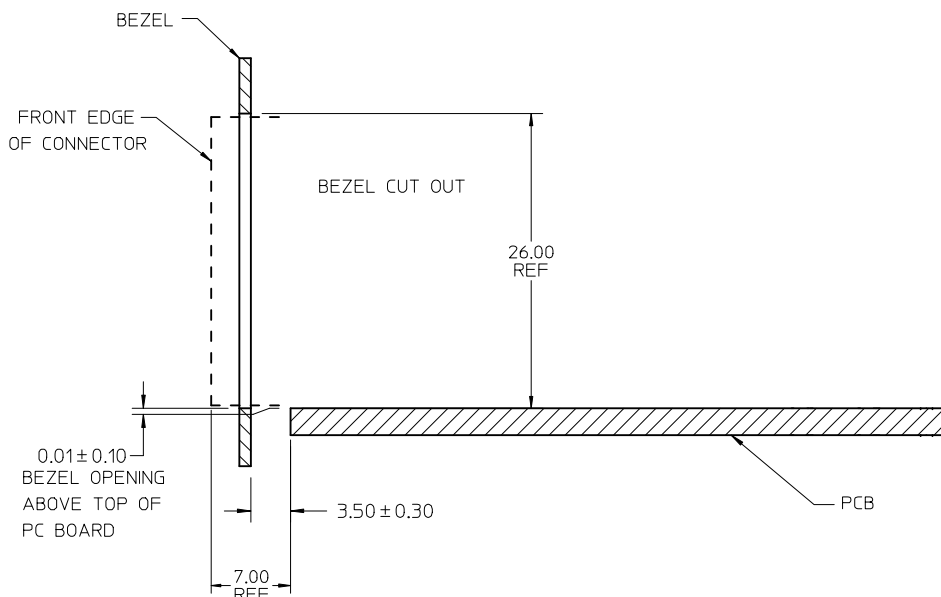
CONNECTOR PIN-OUT COMPONENT SIDE OF BOARD SCALE 10:1

ADD KEEP-OUT ZONES EC NO: UCP2009-1582 DRWN:MS BARRA 2009/01/07 CHKD:BBARKER 2009/01/09 APPR:SMILLER 2009/01/12	QUALITY SYMBOLS ▽=0 ▽=0	GENERAL TOLERANCES (UNLESS SPECIFIED)		DIMENSION STYLE <b>MM ONLY</b>	SCALE <b>3:1</b>	DESIGN UNITS <b>METRIC</b>	THIRD ANGLE PROJECTION		
		4 PLACES ± --- ± --- 3 PLACES ± --- ± --- 2 PLACES ± 0.13 ± --- 1 PLACE ± 0.25 ± ---	mm INCH ± --- ± --- ± 0.13 ± --- ± 0.25 ± ---	DRAWN BY JJANTELEZIO	DATE 11-3-06	STACKED SFP+ 2X1 ASS'Y WITH METAL EMI GASKET AND LIGHTPIPES			
		ANGULAR ± 5 °		CHECKED BY JLONG	DATE 2-1-2007	MOLEX INCORPORATED			
		DRAFT WHERE APPLICABLE MUST REMAIN WITHIN DIMENSIONS		APPROVED BY KREGNIER	DATE 2-1-2007	MATERIAL NO. SEE TABLE	DOCUMENT NO. SD-76044-001	SHEET NO. 3 OF 4	

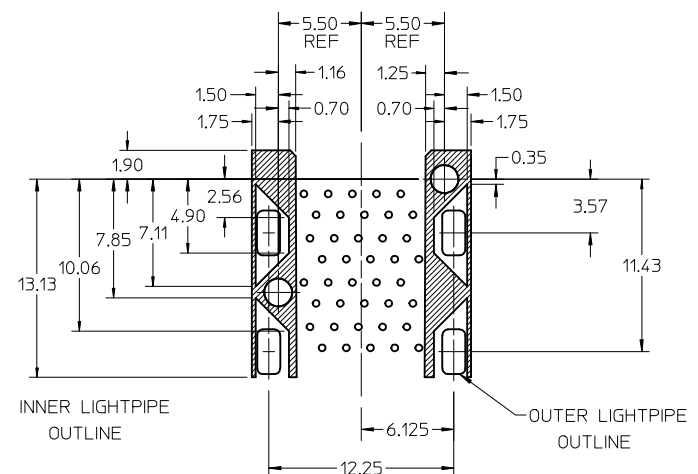
THIS DRAWING CONTAINS INFORMATION THAT IS PROPRIETARY TO MOLEX INCORPORATED AND SHOULD NOT BE USED WITHOUT WRITTEN PERMISSION



BEZEL CUT-OUT CENTER SPACING DETAIL  
BEZEL THICKNESS 0.8-2.6



SECTION Z-Z



DETAIL - LIGHT PIPE AND OTHER ZONES  
SCALE 8:1

THE HATCHED AREA IN THIS VIEW INDICATES ZONES THAT ARE OCCUPIED BY THE PLASTIC HOUSING THAT SEATS AGAINST THE PCB AND BY THE VERTICAL METAL CAGE WALL THAT STOPS JUST SHORT OF THE PCB

<b>SEE SHEET 1</b> EC NO: UCP2009-1582 DRWN:MS.BARRA 2009/01/07 CHKD:BBARKER 2009/01/09 APPR:SMILLER 2009/01/12	QUALITY SYMBOLS ▽=0 ▽=0	GENERAL TOLERANCES (UNLESS SPECIFIED) <table border="1"> <thead> <tr> <th></th> <th>mm</th> <th>INCH</th> </tr> </thead> <tbody> <tr> <td>4 PLACES</td> <td>± 0.10</td> <td>± 0.004</td> </tr> <tr> <td>3 PLACES</td> <td>± 0.15</td> <td>± 0.006</td> </tr> <tr> <td>2 PLACES</td> <td>± 0.20</td> <td>± 0.008</td> </tr> <tr> <td>1 PLACE</td> <td>± 0.25</td> <td>± 0.010</td> </tr> </tbody> </table>		mm	INCH	4 PLACES	± 0.10	± 0.004	3 PLACES	± 0.15	± 0.006	2 PLACES	± 0.20	± 0.008	1 PLACE	± 0.25	± 0.010	DIMENSION STYLE <b>MM ONLY</b> DRAWN BY: JJANTELEZIO DATE: 11-3-06 CHECKED BY: JLONG DATE: 2-1-2007 APPROVED BY: KREGNIER DATE: 2-1-2007	SCALE <b>3:1</b> DESIGN UNITS <b>METRIC</b> THIRD ANGLE PROJECTION	TITLE <b>STACKED SFP+ 2X1 ASS'Y WITH METAL EMI GASKET AND LIGHTPIPES</b>
		mm	INCH																	
	4 PLACES	± 0.10	± 0.004																	
	3 PLACES	± 0.15	± 0.006																	
2 PLACES	± 0.20	± 0.008																		
1 PLACE	± 0.25	± 0.010																		
MATERIAL NO. <b>SEE TABLE</b>	DOCUMENT NO. <b>SD-76044-001</b>	SHEET NO. <b>4 OF 4</b>																		
DRAFT WHERE APPLICABLE MUST REMAIN WITHIN DIMENSIONS	SIZE <b>C</b>	THIS DRAWING CONTAINS INFORMATION THAT IS PROPRIETARY TO MOLEX INCORPORATED AND SHOULD NOT BE USED WITHOUT WRITTEN PERMISSION																		