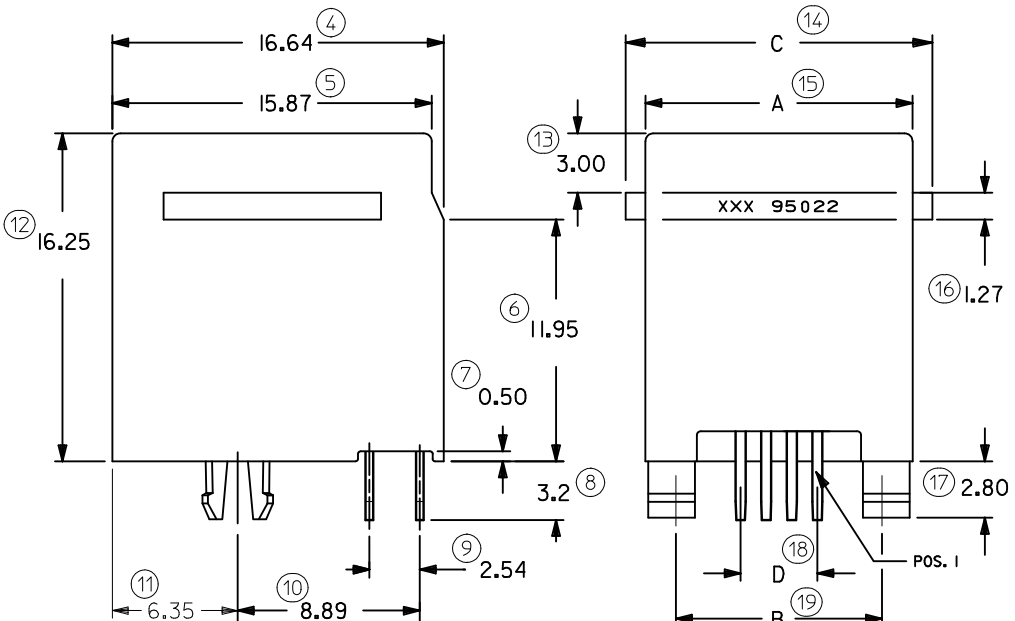
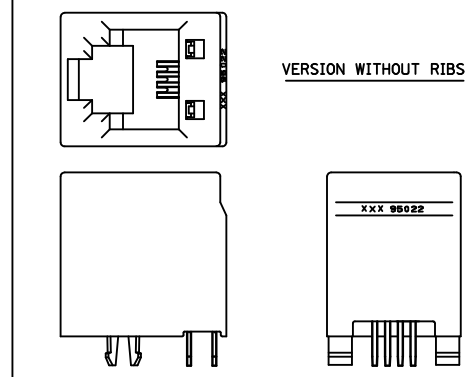
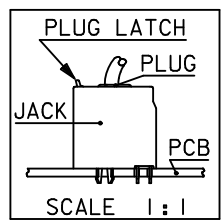
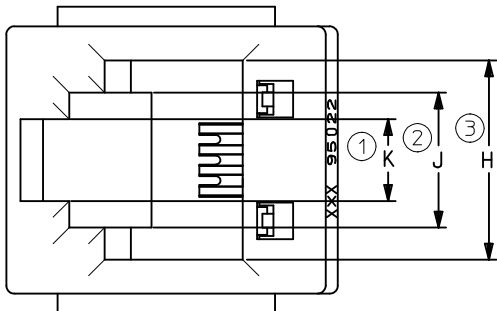


10 9 8 7 6 5 4 3 2 1

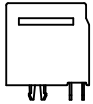


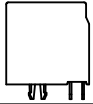
NOTES :

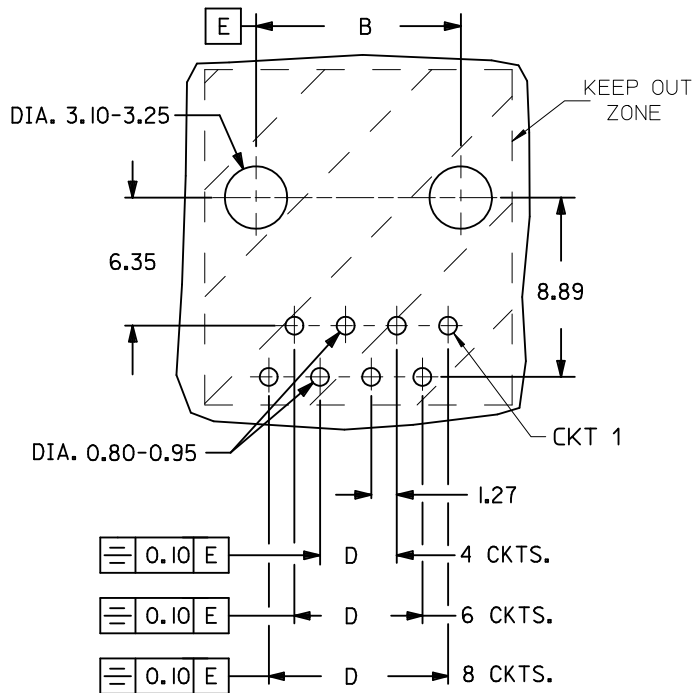
- 1- MATERIAL:
 - HOUSING: LCP FIBER GLASS FILLED 94-V-0 COLOR BLACK.
 - TERMINAL: COPPER ALLOY PLATED WITH:
 - BASE FINISH: NICKEL
 - CONTACT SURFACE FINISH: GOLD
 - OR
 - GOLD FLASH OVER PALLADIUM NICKEL
 - EXCEEDS PRODUCT REQUIREMENTS BASED ON PS-95522-001
 - 2- PC BOARD THICKNESS : 1.57
 - 3- JACK FOR MATING WITH IEC 60603-7 AND TIA-1096-A PLUGS 90075 MOLEX SERIES .
 - 4- PRODUCT SPECIFICATION PS-95522-001.
 - 5- APPLICATION SPECIFICATION AS-85513-001
 - 6- PACKAGING SPECIFICATION PK-95022. (SHT.1 TRAY PACKAGING) PK-95022. (SHT.2 TUBE PACKAGING)
 - 7- FOR ILLUSTRATION PURPOSES A 4 CIRCUIT IS SHOWN.
 - 8- MANUFACTURING I.D. CAN BE EITHER MG, MXF OR MXI.
- LAST INSPECTION NUMBER: 19

REMOVED PLATING NOTE EC NO: IPG2012-0698 2012/04/02 DRW:DBYRNES 2012/04/17 CHKD:MSHANAHAN 2012/06/28 APPR:EFOLAN	DESCRIPTION REV	QUALITY SYMBOLS	GENERAL TOLERANCES (UNLESS SPECIFIED)	DIMENSION STYLE	SCALE	DESIGN UNITS	THIRD ANGLE PROJECTION	
		▼=0 ◻=0	mm INCH 4 PLACES ± --- ± --- 3 PLACES ± --- ± --- 2 PLACES ± 0.25 ± .014 1 PLACE ± 0.35 ± --- ANGULAR ± 2 °	MM ONLY	1:1	METRIC		
			DRAFT WHERE APPLICABLE MUST REMAIN WITHIN DIMENSIONS	DRAWN BY: KNOLLER DATE: 04/08/27 CHECKED BY: FCARABET DATE: 04/08/30 APPROVED BY: KNOLLER DATE: 04/08/30	TITLE	HIGH PROFILE TOP ENTRY JACK		
				MATERIAL NO. SEE CHART SHT. 2 SIZE: A3 THIS DRAWING CONTAINS INFORMATION THAT IS PROPRIETARY TO MOLEX INCORPORATED AND SHOULD NOT BE USED WITHOUT WRITTEN PERMISSION	MOLEX INCORPORATED DOCUMENT NO. SD-95522-001 SHEET NO. 1 OF 2			

9 8 7 6 5 4 3 2 1


PART NUMBERS FOR JACK WITH RIBS									
TYPE	PACKAGING	POS. 4	TOOLED	POS. 6	TOOLED	POS. 6	TOOLED	POS. 8	TOOLED
		4 CKTS.		4 CKTS.		6 CKTS.		8 CKTS.	
	TRAY	95522-2447	X	95522-2647	X	95522-2667	X	95522-2887	X
	TUBE					95522-2617	X		
						SEE NOTE 8 SH.1			

PART NUMBERS FOR JACK WITHOUT RIBS									
TYPE	PACKAGING	POS. 4	TOOLED	POS. 6	TOOLED	POS. 6	TOOLED	POS. 8	TOOLED
		4 CKTS.		4 CKTS.		6 CKTS.		8 CKTS.	
	TRAY	95522-2441	X	95522-2641	X	95522-2661	X	95522-2881	X
	TUBE					95522-2611	X		



MOUNTING HOLE PATTERNS
(SEE FROM COMPONENT SIDE)
ALL DIMENSIONS REF DIMENSIONS

DIM.	TYPE	POS. 4	POS. 6		POS. 8
		4 CKTS.	4 CKTS.	6 CKTS.	8 CKTS.
A		11.18	13.21	13.21	15.24
B		7.62	10.16	10.16	11.43
C	(WITH RIBS)	14.00	16.00	16.00	18.00
D		3.81	3.81	6.35	8.89
H		7.82	9.88	9.88	11.94
J		5.64	6.70	6.70	6.30
K		3.07	4.06	4.06	4.06

REMOVED PLATING OPTIONS EC NO: IPG2012-0698 DRW:DBYRNES 2012/04/02 CHKD:MSHAHAN 2012/04/17 APPR:EFOLAN 2012/06/28	QUALITY SYMBOLS ▽=0 ◻=0	GENERAL TOLERANCES (UNLESS SPECIFIED) mm INCH 4 PLACES ± --- ± --- 3 PLACES ± --- ± --- 2 PLACES ± 0.25 ± --- 1 PLACE ± 0.35 ± --- ANGULAR ± 2°	DIMENSION STYLE MM ONLY DRAWN BY: KNOLLER CHECKED BY: FCARABET APPROVED BY: KNOLLER DATE: 04/08/27 DATE: 04/08/30 DATE: 04/08/30	SCALE: 1:1 DESIGN UNITS: METRIC THIRD ANGLE PROJECTION	HIGH PROFILE TOP ENTRY JACK  MOLEX INCORPORATED DOCUMENT NO. SD-95522-001 SHEET NO. 2 OF 2
	DRAFT WHERE APPLICABLE MUST REMAIN WITHIN DIMENSIONS	SEE CHART	THIS DRAWING CONTAINS INFORMATION THAT IS PROPRIETARY TO MOLEX INCORPORATED AND SHOULD NOT BE USED WITHOUT WRITTEN PERMISSION		
	SIZE A3				