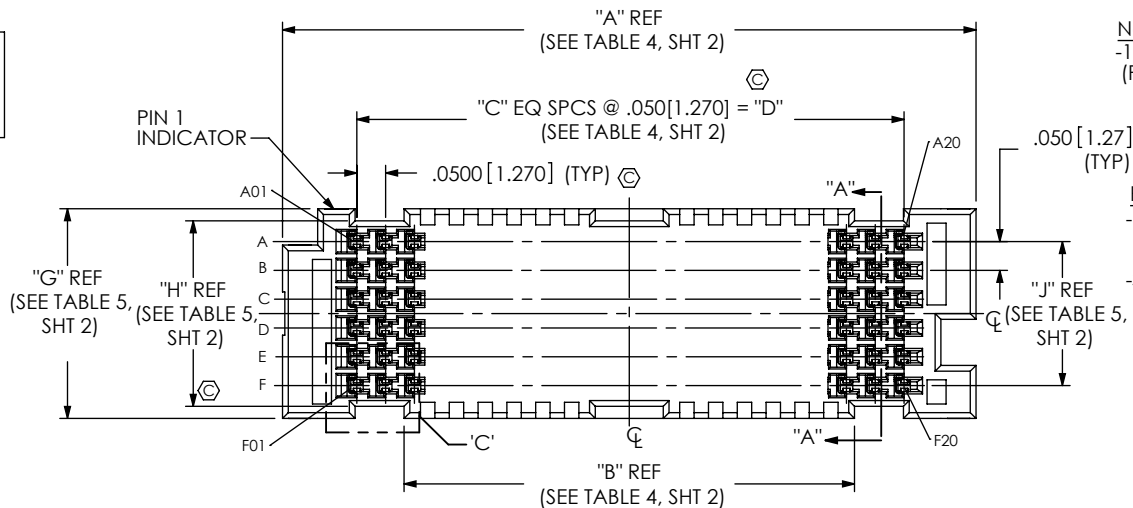


DESIGNED & DIMENSIONED  
IN INCHES [MILLIMETERS]

LPAF-XX-XX.X-X-XX-X-K-TR

DO NOT  
SCALE FROM  
THIS PRINT



No OF POSITIONS  
-10, -20, -30, \*-40, \*-50  
(PER ROW)

PACKAGING  
-TR: TAPE & REEL  
(SEE NOTES 4.5,7)

LEAD STYLE  
-03.0: 3.0mm  
-03.5: 3.5mm

OPTION  
-K: POLYIMIDE PAD  
(SEE FIG. 3, SHT 3)

PLATING SPECIFICATION

-L: 10µ" GOLD ON CONTACT AREA,  
MATTE TIN ON TAIL  
(USE SUB-C-289-XX.X-L-X)  
-S: 30µ" GOLD ON CONTACT AREA,  
MATTE TIN ON TAIL  
(USE SUB-C-289-XX.X-S-X)

SOLDER COMPOSITION & STYLE  
\*-1: 63.0% TIN / 37.0% LEAD  
CRIMP TAIL  
(USE SUB-C-289-XX.X-X-1)  
\*-2: 95.5% TIN / 3.8% SILVER  
.7% COPPER CRIMP TAIL  
(USE SUB-C-289-XX.X-X-2)

ROW SPECIFICATION

-04: 4 ROW  
-06: 6 ROW  
\*-08: 8 ROW  
\*-10: 10 ROW

\* = NOT TOOLED

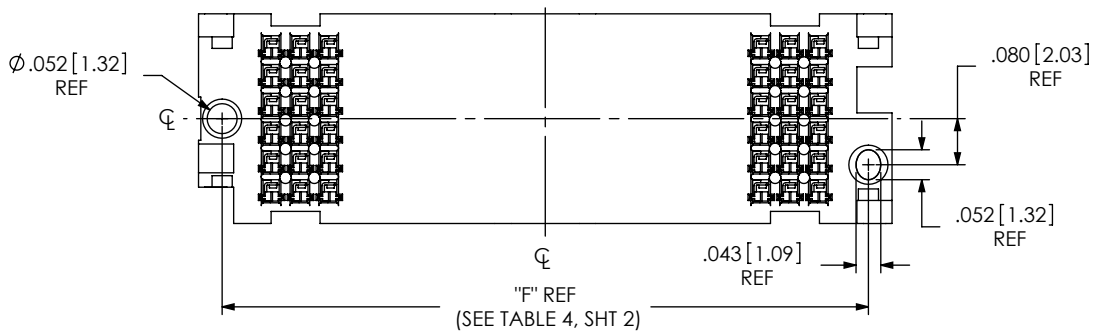
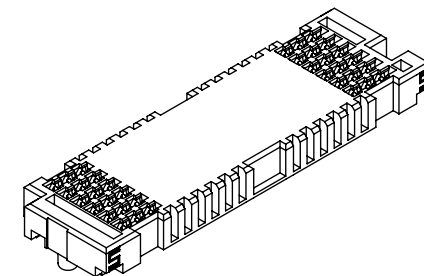
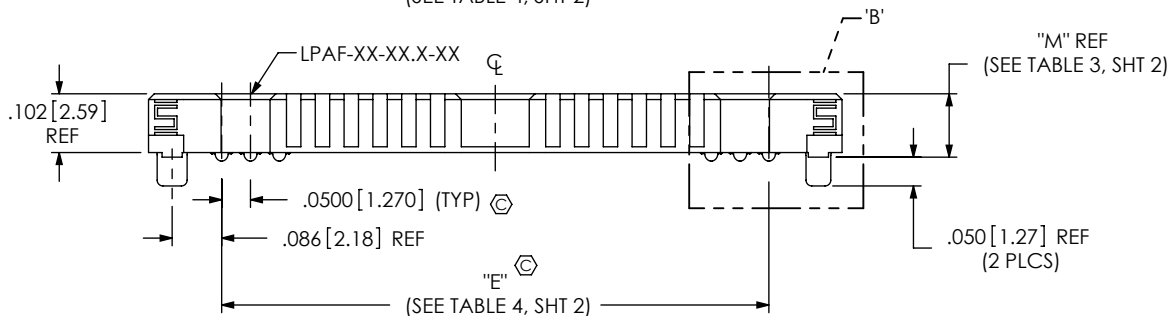


TABLE 1 STACK HEIGHT		
LPAF LEAD STYLE	LPAM LEAD STYLE	
	-01.0	-01.5
-03.0	.157 [4.00]	.177 [4.50]
-03.5	.177 [4.50]	.197 [5.00]

TABLE 2		
LPAF ASSEMBLY	"BODY CALLOUT"	"CONTACT SUB ASSEMBLY"
LPAF-XX-03.0-X-XX-X-K-TR	LPAF-XX-03.0-XX	SUB-C-289-03.0-X-X
LPAF-XX-03.5-X-XX-X-K-TR	LPAF-XX-03.5-XX	SUB-C-289-03.5-X-X

PATENT PENDING

FIG 1  
LPAF-20-03.0-X-06-X-K-TR SHOWN  
(SOME FEATURES REMOVED FOR CLARITY)

- NOTES:
1.  $\text{⊕}$  REPRESENTS A CRITICAL DIMENSION.
  2. PUSH OUT FORCE .50LBS. [2.22N].
  3. DIMENSION TO BE MEASURED IN ALL FOUR CORNERS.
  4. TAPE & REEL WILL BE SUPPLIED WHETHER OR NOT -TR IS SPECIFIED.
  5. FOR QUANTITIES UP TO 49 PCS., NO LEADER, TRAILER OR REEL WILL BE SUPPLIED. FOR 50-124 PIECES, NO LEADER OR TRAILER WILL BE SUPPLIED.
  6. NOTE DELETED.
  7. ATTACH LABEL "SEAX-0001" TO EACH TAPE & REEL PACKAGE.

UNLESS OTHERWISE SPECIFIED,  
DIMENSIONS ARE IN INCHES[MILLIMETERS].  
TOLERANCES ARE:  
DECIMALS ANGLES  
.XX: ±.01 [.3] 2°  
.XXX: ±.005 [.13]  
.XXXX: ±.0020 [.051]

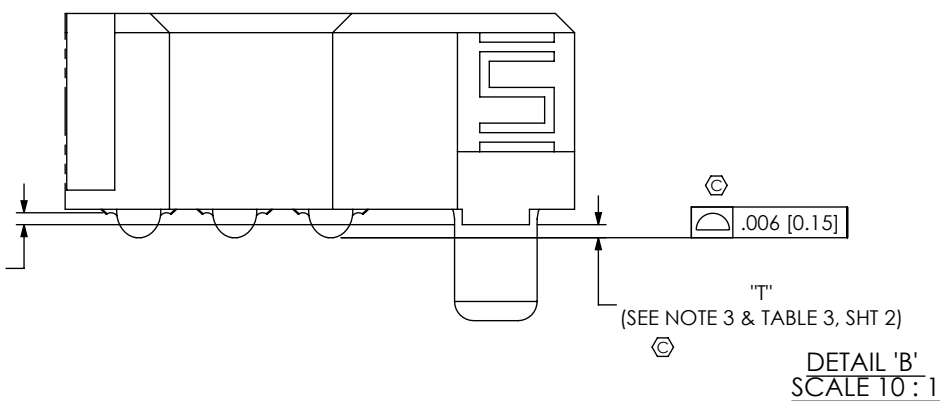
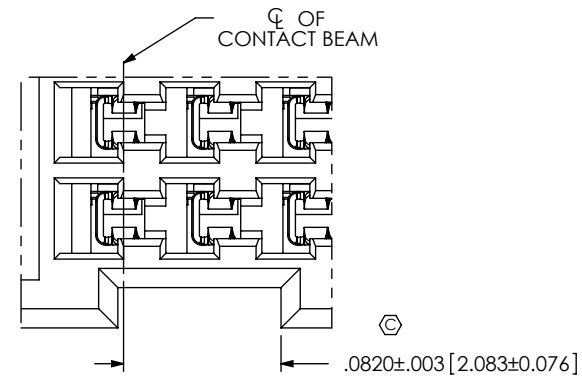
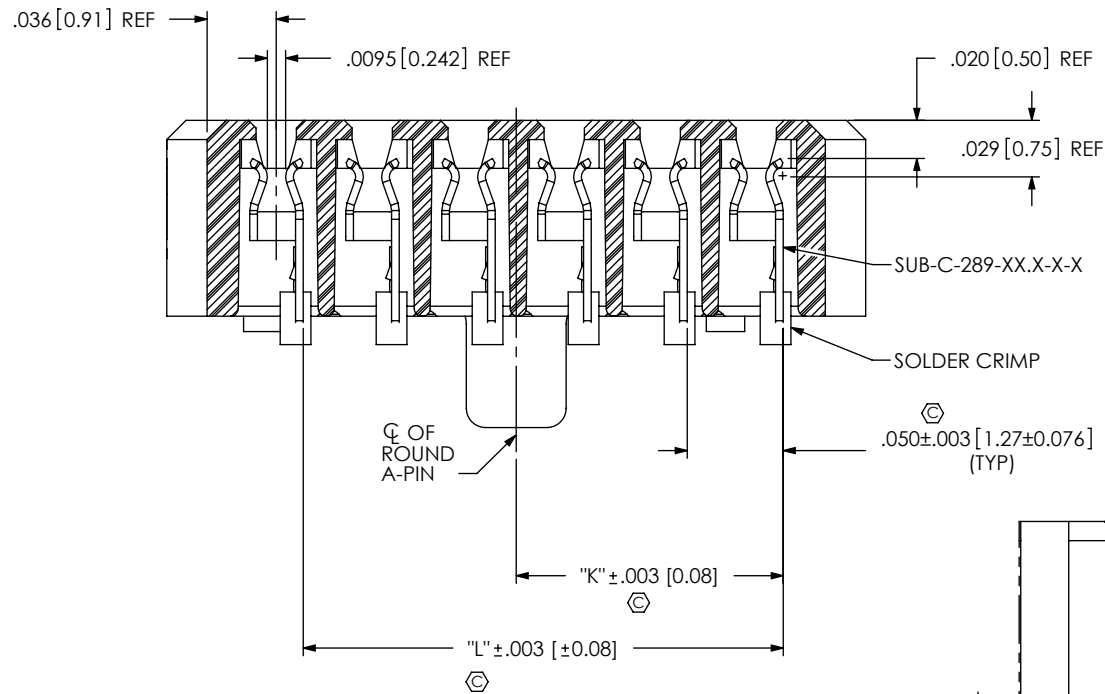
PROPRIETARY NOTE  
THIS DOCUMENT CONTAINS INFORMATION  
CONFIDENTIAL AND PROPRIETARY TO  
SAMTEC, INC. AND SHALL NOT BE REPRODUCED  
OR TRANSFERRED TO OTHER DOCUMENTS OR  
DISCLOSED TO OTHERS OR USED FOR ANY  
PURPOSE OTHER THAN THAT WHICH IT WAS  
OBTAINED WITHOUT THE EXPRESSED WRITTEN  
CONSENT OF SAMTEC, INC.



520 PARK EAST BLVD, NEW ALBANY, IN 47150  
PHONE: 812-944-6733 FAX: 812-948-5047  
e-Mail info@SAMTEC.com code 55322

MATERIAL: DO NOT SCALE DRAWING SHEET SCALE: 3:1  
INSULATOR: LCP, COLOR: BLACK  
CONTACT: COPPER ALLOY

DESCRIPTION:  
LPAF SOCKET ASSEMBLY  
DWG. NO.  
LPAF-XX-XX.X-X-XX-X-K-TR  
BY: R MUSSER 06/08/2009 SHEET 1 OF 3



SECTION "A"-"A"  
SCALE TO: 1

DETAIL "B"  
SCALE TO: 1

TABLE 3

LEAD STYLE	"M"	"S"	"T"
-03.0	0.110 [2.79]	0.006 [0.15]	0.007 [0.18]
-03.5	0.130 [3.30]	0.019 [0.48]	0.004 [0.10]

TABLE 4

No. OF POS	"A"	"B"	"C"	"D"	"E"	"F"
-10	.704 [17.88]	.282 [7.16]	9	.4500 [11.430]	.4500 [11.430]	.622 [15.80]
-20	1.204 [30.58]	.782 [19.86]	19	.9500 [24.130]	.9500 [24.130]	1.122 [28.50]
-30	1.704 [43.28]	1.282 [32.56]	29	1.4500 [36.830]	1.4500 [36.830]	1.622 [41.20]
*-40	2.204 [55.98]	1.782 [45.26]	39	1.9500 [49.530]	1.9500 [49.530]	2.122 [53.90]
*-50	2.704 [68.68]	2.282 [57.96]	49	2.4500 [62.230]	2.4500 [62.230]	2.622 [66.60]

\* = NOT TOOLED

TABLE 5

ROWS	"G"	"H"	"J"	"K"	"L"
-04	.264 [6.71]	.222 [5.64]	.1500 [3.810]	.089 [2.26]	.150 [3.81]
-06	.364 [9.25]	.322 [8.18]	.2500 [6.350]	.139 [3.53]	.250 [6.35]
*-08	.464 [11.79]	.422 [10.72]	.3500 [8.890]	.189 [4.80]	.350 [8.89]
*-10	.564 [14.33]	.522 [13.26]	.4500 [11.430]	.239 [6.07]	.450 [11.43]

\* = NOT TOOLED

PROPRIETARY NOTE

THIS DOCUMENT CONTAINS INFORMATION CONFIDENTIAL AND PROPRIETARY TO SAMTEC, INC. AND SHALL NOT BE REPRODUCED OR TRANSFERRED TO OTHER DOCUMENTS OR DISCLOSED TO OTHERS OR USED FOR ANY PURPOSE OTHER THAN THAT WHICH IT WAS OBTAINED WITHOUT THE EXPRESSED WRITTEN CONSENT OF SAMTEC, INC.

DO NOT SCALE DRAWING

SHEET SCALE: 3:1



520 PARK EAST BLVD, NEW ALBANY, IN 47150  
PHONE: 812-944-6733 FAX: 812-948-5047  
e-Mail: info@SAMTEC.com code 55322

DESCRIPTION:  
LPAF SOCKET ASSEMBLY

DWG. NO.  
LPAF-XX-XX.X-X-XX-X-K-TR

BY: R MUSSER 06/08/2009 SHEET 2 OF 3

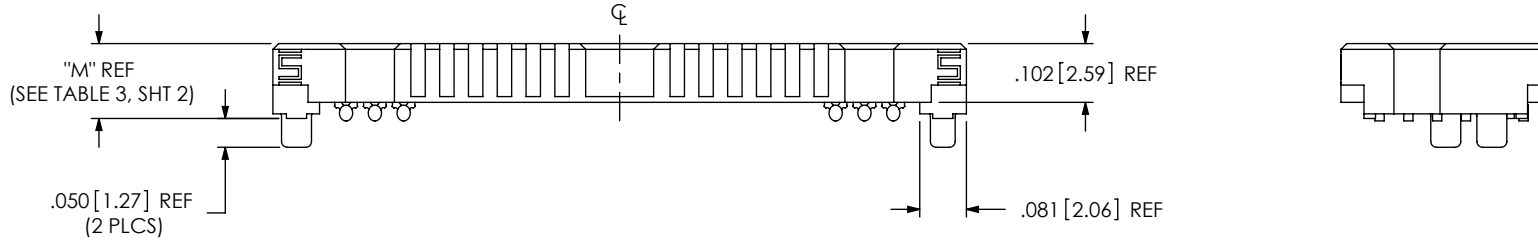


FIG 2  
LPAF-20-03.5-X-06-X-X-K-TR SHOWN  
(SOME FEATURES REMOVED FOR CLARITY)

**TABLE 6**

ROWS	DOT APPLICATOR POLYIMIDE TAPE CALLOUT	"N"	"P"					"Q"
			10 POS	20 POS	30 POS	*40 POS	*50 POS	
-04	K-DOT-.256-.375-.005	.256 [6.50]	.224 [5.69]	.474 [12.04]	.724 [18.39]	.974 [24.74]	1.224 [31.09]	.004 [0.10]
-06	K-DOT-.354-.469-.005	.354 [8.99]	.175 [4.45]	.425 [10.80]	.675 [17.15]	.925 [23.50]	1.175 [29.85]	.005 [0.13]
*-08	K-DOT-.460-.550-.005	.460 [11.68]	.122 [3.10]	.372 [9.45]	.622 [15.80]	.872 [22.15]	1.122 [28.50]	.002 [0.05]
*-10	K-DOT-.551-.625-.005	.551 [14.00]	.077 [1.96]	.327 [8.31]	.577 [14.66]	.827 [21.01]	1.077 [27.36]	.007 [0.18]

\* = NOT TOOLED

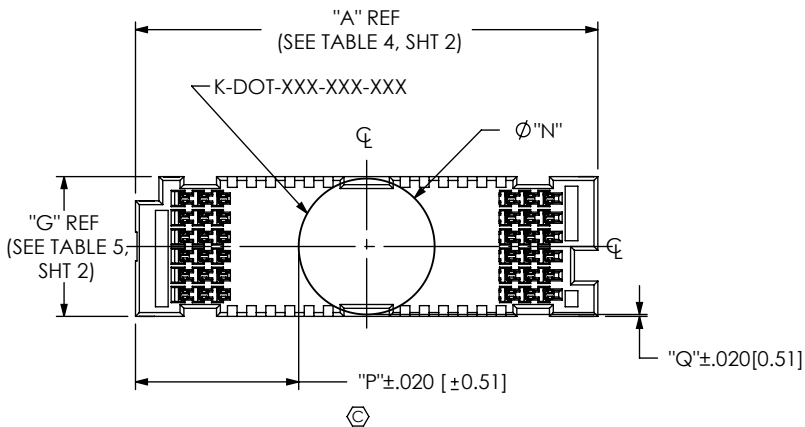
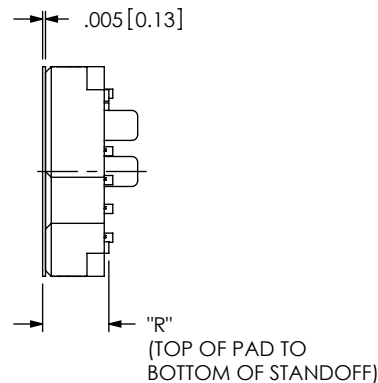


FIG 3  
-K: POLYIMIDE PAD  
(USE K-DOT-XXX-XXX-XXX)  
LPAF-20-03.0-X-06-X-X-K-TR SHOWN  
(SOME FEATURES REMOVED FOR CLARITY)



**TABLE 7**

LEAD STYLE	"R"
-03.0	0.115 [2.92]
-03.5	0.135 [3.43]

**PROPRIETARY NOTE**  
THIS DOCUMENT CONTAINS INFORMATION  
CONFIDENTIAL AND PROPRIETARY TO  
SAMTEC, INC. AND SHALL NOT BE REPRODUCED  
OR TRANSFERRED TO OTHER DOCUMENTS OR  
DISCLOSED TO OTHERS OR USED FOR ANY  
PURPOSE OTHER THAN THAT WHICH IT WAS  
OBTAINED WITHOUT THE EXPRESSED WRITTEN  
CONSENT OF SAMTEC, INC.

DO NOT SCALE DRAWING

SHEET SCALE: 1:0.333333

**samtec**

520 PARK EAST BLVD, NEW ALBANY, IN 47150  
PHONE: 812-944-6733 FAX: 812-948-5047  
e-Mail: info@SAMTEC.com code 55322

DESCRIPTION:  
LPAF SOCKET ASSEMBLY

DWG. NO.  
**LPAF-XX-XX.X-X-XX-X-K-TR**

BY: R MUSSER 06/08/2009 SHEET 3 OF 3