

REV. BN

NOTES:

1. MINIMUM CONTACT RETENTION: 0.5 LB PER PIN.
2. -01 POSITION OFFERED FOR SINGLE ROW RIGHT ANGLE ONLY.
3. -01, -02 & -03 POSITIONS TO BE LAYER PACKAGED.
4. STOCK TO BE 62 POSITION FOR -D AND 61 POSITION FOR -S, -01 LEAD STYLE ONLY. TO BE CUT TO POSITION FOR CUSTOMER.
5. .005 [.13] MAX SHEAR BURR ALLOWANCE.

DO NOT SCALE FROM THIS PRINT

DIMENSIONS ARE IN INCHES		UNLESS OTHERWISE NOTED		TOLERANCES ARE:		TITLE: 2MM SOCKET STRIP ASSEMBLY	DWG NO: SQT-1XX-XX-XXX-X-XXX-XXX
ONE PLACE DECIMALS ±.1[2.5]		THREE PLACE DECIMALS ±.005[.127]		ANGLES ± 2°		SHEET 1 OF 3	
TWO PLACE DECIMALS ±.01[.25]		FOUR PLACE DECIMALS ±.0020[.051]					

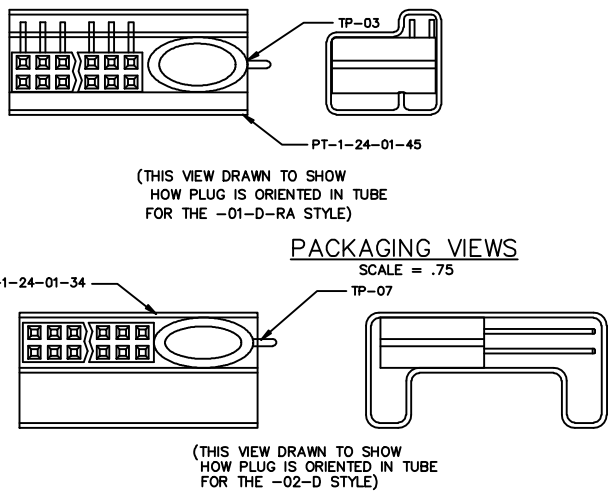
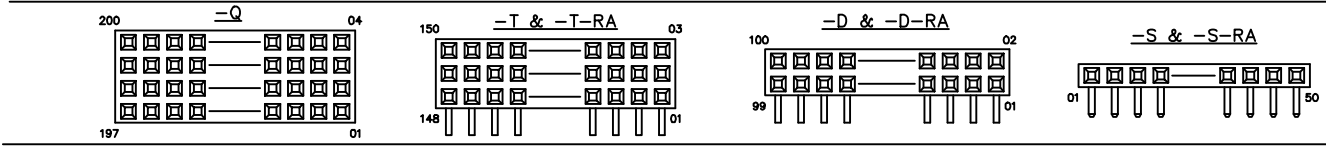
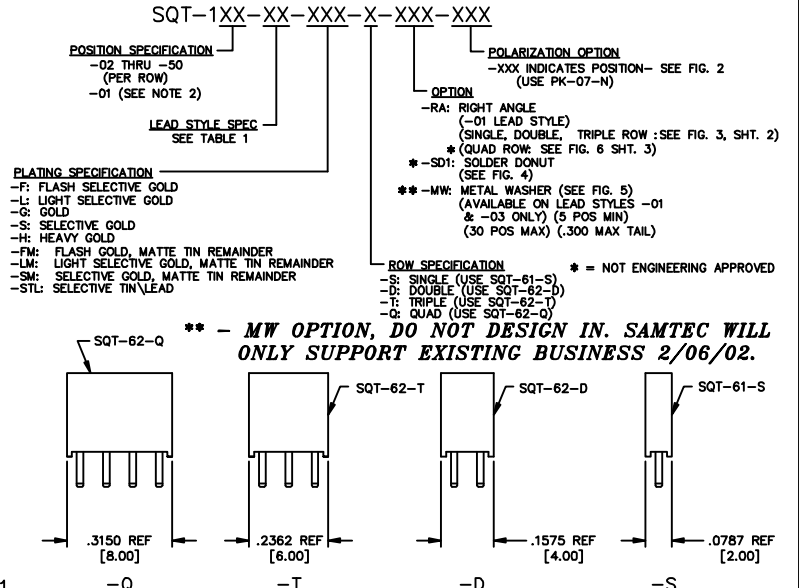
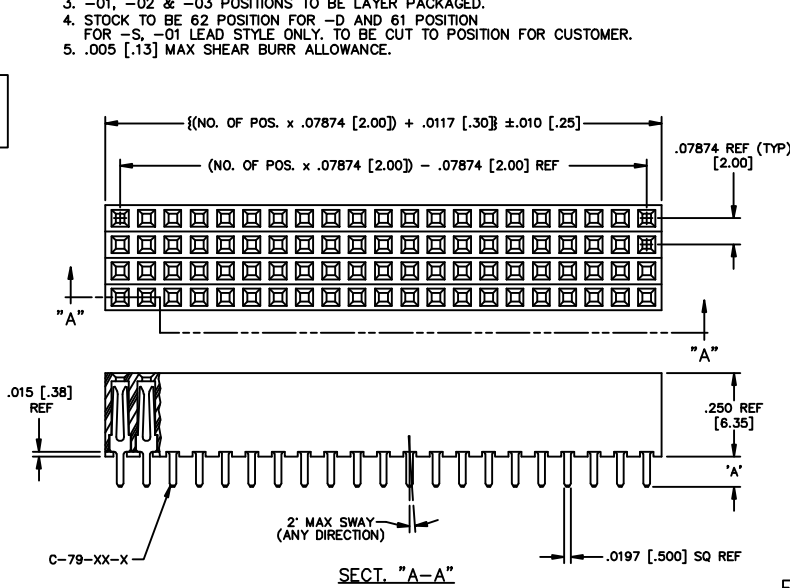


TABLE 2

ROW SPEC.	NO. OF POS.	PKG TUBE	TUBE PLUG
-03-S	04-50	PT-1-24-06-17	TP-24
-02-S	05-50	PT-1-24-10-03	TP-03
-01-S-RA	04-50	PT-1-24-01-43	TP-24
-01-D	04-50	PT-1-24-02-17	TP-09
-02-D	04-50	PT-1-24-01-34	TP-07
-03-D	04-50	PT-1-24-01-22	TP-03
-01-D-RA	04-50	PT-1-24-01-45	TP-03
-01-T	04-50	PT-1-24-05-09	TP-07
-02-T	04-50	PT-1-24-01-102	TP-07
-03-T	04-50	PT-1-24-08-15	TP-07
-01-Q	04-50	PT-1-24-15-29	TP-07
-02-Q	04-50	PT-1-24-02-51	TP-13
-03-Q	04-50	PT-1-24-16-29	TP-07
-01-T-RA	04-50	PT-1-24-06-40	TP-07
-01-S	04-50	PT-1-24-05-15	TP-24
ALL STYLES	-02 & -03	LAYER PACKAGING	

TABLE 1

LEAD STYLE	'A'	CONTACT
-01	.090 [2.29]	C-79-01-X
-01-S-RA	N/A	C-79-53-X
-01-D-RA	N/A	C-79-12-X
-01-D-RA	N/A	C-79-53-X
-01-T-RA	N/A	C-79-53-X
-01-T-RA	N/A	C-79-12-X
-01-T-RA	N/A	C-79-12-X
*-01-Q-RA	N/A	ASP-71394-01-X
*-01-Q-RA	N/A	ASP-71394-02-X
*-01-Q-RA	N/A	ASP-71394-03-X
*-01-Q-RA	N/A	ASP-71394-04-X
-02	.600 [15.24]	C-79-02-X
-03	.208 [5.28]	C-79-53-X

PROPRIETARY NOTE
THIS DOCUMENT CONTAINS INFORMATION CONFIDENTIAL AND PROPRIETARY TO SAMTEC INC AND SHALL NOT BE REPRODUCED OR TRANSFERRED TO OTHER DOCUMENTS OR DISCLOSED TO OTHERS OR USED FOR ANY PURPOSE OTHER THAN THAT FOR WHICH IT WAS OBTAINED WITHOUT THE EXPRESSED WRITTEN CONSENT OF SAMTEC INC.

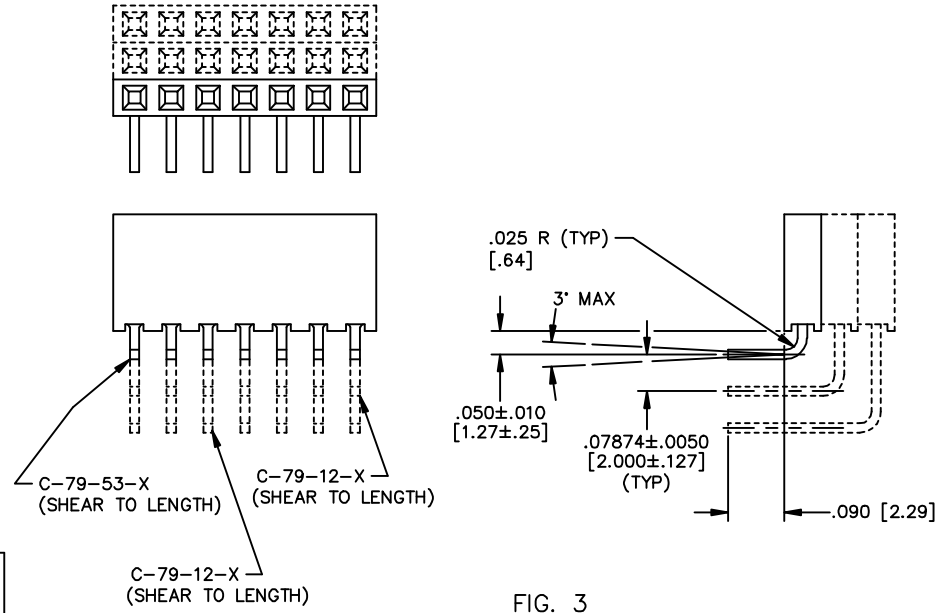
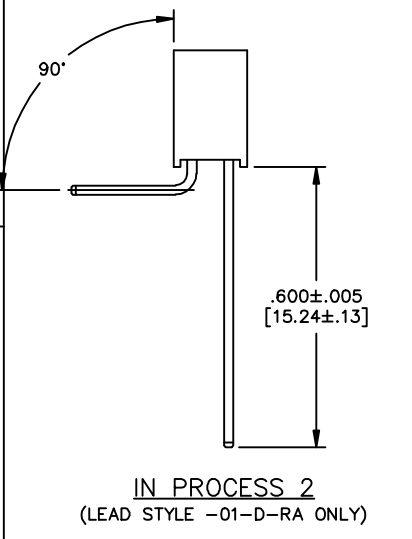
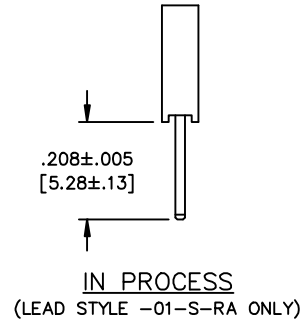
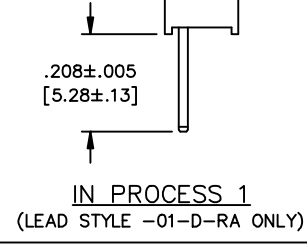
MATERIAL:
CONTACT: PHOS BRONZE
INSULATOR: LCP
COLOR: BLACK
MAX BOW: .004 IN/IN

samtec SQT-MKTI
520 PARK EAST BLVD. NEW ALBANY, INDIANA 47150
PHONE (812) 844-6733 F.O. BOX 1147
CODE 55322
MADE BY: BRATCHER 7-24-95
SQT-1XX-XX-XXX-X-XXX-XXX
SHEET 1 OF 3

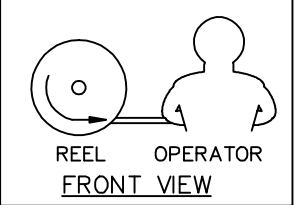
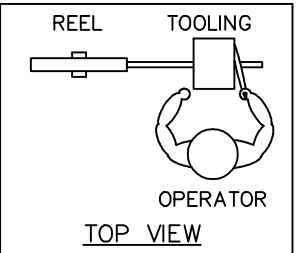
REV. BN

DIMENSIONS ARE IN INCHES		TOLERANCES ARE:		TITLE: 2MM SOCKET STRIP ASSEMBLY	DWG NO: SQT-1XX-XX-XXX-X-XXX-XXX
ONE PLACE DECIMALS ± .1[2.5]	THREE PLACE DECIMALS ± .005[.127]	ANGLES ± 2°	TWO PLACE DECIMALS ± .01[.25]		

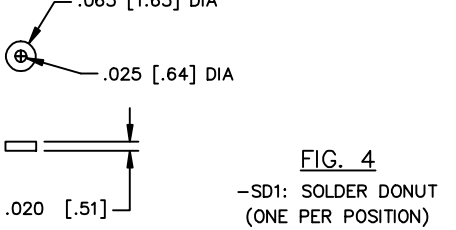
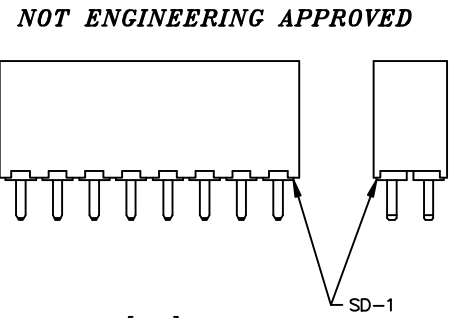
SHEET 2 OF 3



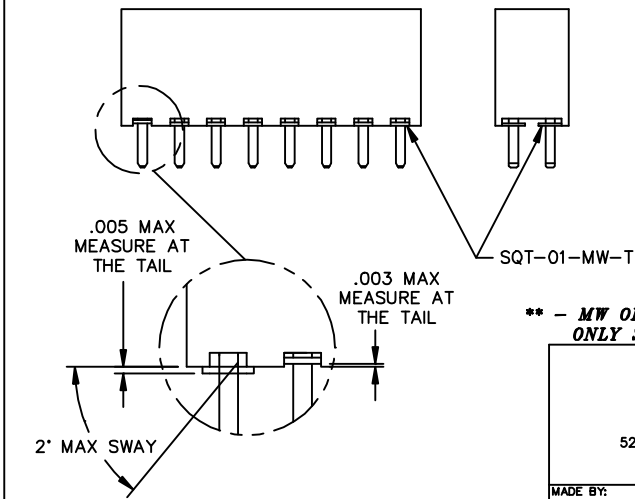
-RA: RIGHT ANGLE
(-01 STYLE SINGLE, DOUBLE, AND TRIPLE ROW)



WASHER REEL ASSEMBLY ORIENTATION VIEW



SD-1: SOLDER DONUT (ONE PER POSITION)



** -MW: METAL WASHER (ONE PER POSITION) (AVAILABLE ON LEAD STYLES -01 & -03 ONLY) (5 POS MIN) (30 POS MAX)

** - MW OPTION, DO NOT DESIGN IN. SAMTEC WILL ONLY SUPPORT EXISTING BUSINESS 2/06/02.

PROPRIETARY NOTE
THIS DOCUMENT CONTAINS INFORMATION CONFIDENTIAL AND PROPRIETARY TO SAMTEC INC. AND SHALL NOT BE REPRODUCED OR TRANSMITTED TO OTHER DOCUMENTS OR DISCLOSED TO OTHERS OR USED FOR ANY PURPOSE OTHER THAN THAT FOR WHICH IT WAS OBTAINED WITHOUT THE EXPRESSED WRITTEN CONSENT OF SAMTEC INC.

MISC\MKTG SQT-MKT2

samtec

520 PARK EAST BLVD. NEW ALBANY, INDIANA 47150
PHONE (812) 944-6733 P.O. BOX 1147
CODE 55322

MADE BY: BRATCHER 7-24-95

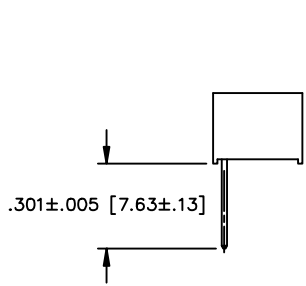
SQT-1XX-XX-XXX-X-XXX-XXX
SHEET 2 OF 3

REV. BN

UNLESS OTHERWISE NOTED TOLERANCES ARE:
 DIMENSIONS ARE IN INCHES
 ONE PLACE DECIMALS ± .1[2.5] THREE PLACE DECIMALS ± .005[.127] ANGLES ± 2°
 TWO PLACE DECIMALS ± .01[.25] FOUR PLACE DECIMALS ± .0020[.051]

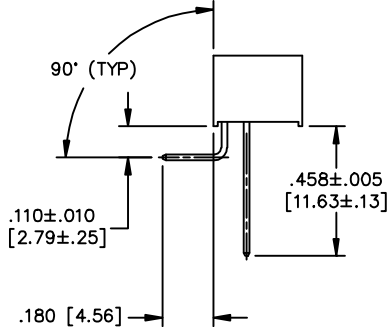
TITLE: 2MM SOCKET STRIP ASSEMBLY

DWG NO: SQT-1XX-XX-XXX-X-XXX-XXX
 SHEET 3 OF 3



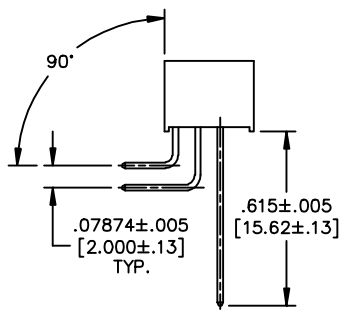
IN-PROCESS 1

-RA: RIGHT ANGLE
 (-01 STYLE QUAD ROW ONLY)



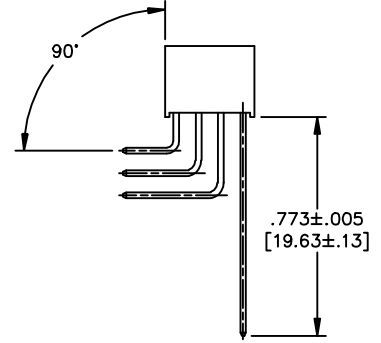
IN-PROCESS 2

-RA: RIGHT ANGLE
 (-01 STYLE QUAD ROW ONLY)



IN-PROCESS 3

-RA: RIGHT ANGLE
 (-01 STYLE QUAD ROW ONLY)



IN-PROCESS 4

-RA: RIGHT ANGLE
 (-01 STYLE QUAD ROW ONLY)

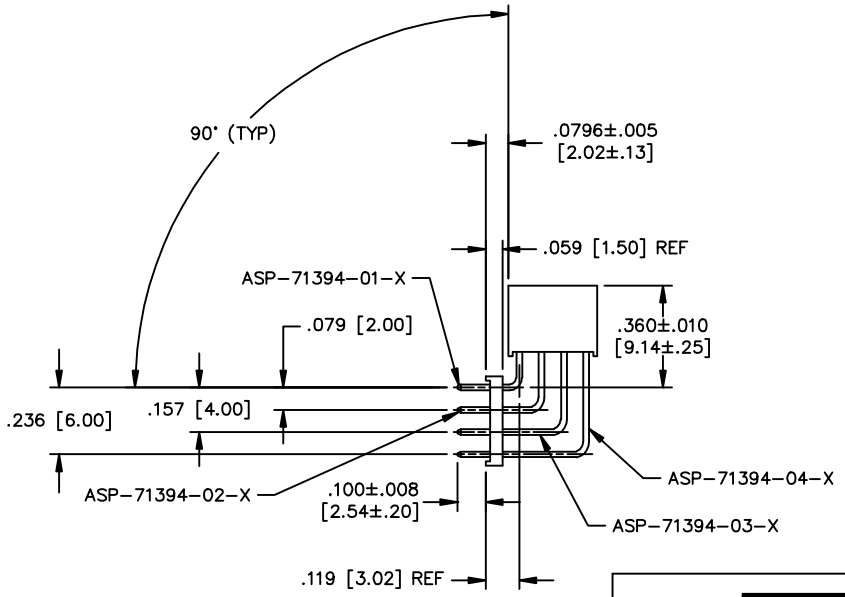
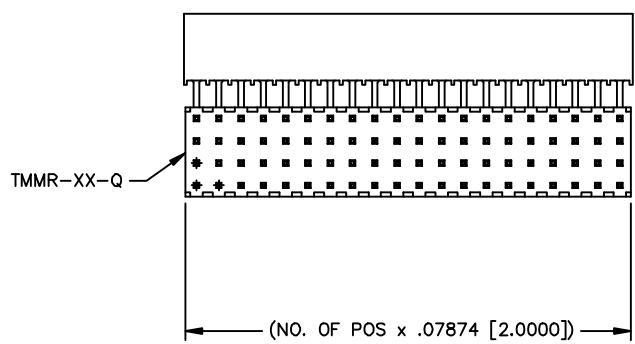


FIG. 6

-RA: RIGHT ANGLE
 (-01 STYLE QUAD ROW ONLY)

PROPRIETARY NOTE
 THIS DOCUMENT CONTAINS INFORMATION CONFIDENTIAL AND PROPRIETARY TO SAMTEC INC. AND SHALL NOT BE REPRODUCED OR TRANSMITTED TO OTHER DOCUMENTS OR DISCLOSED TO OTHERS OR USED FOR ANY PURPOSE OTHER THAN THAT FOR WHICH IT WAS OBTAINED WITHOUT THE EXPRESSED WRITTEN CONSENT OF SAMTEC INC.

PLOT SCALE: 1=-.2

samtec MISC\MKTG SQT-MKT3

520 PARK EAST BLVD. NEW ALBANY, INDIANA 47150
 PHONE (812) 944-6733 P.O. BOX 1147
 CODE 55322

MADE BY: T. WERNE 07-06-2000

SQT-1XX-XX-XXX-X-XXX-XXX
 SHEET 3 OF 3