

THIS DRAWING IS UNPUBLISHED. RELEASED FOR PUBLICATION
 © COPYRIGHT - By - ALL RIGHTS RESERVED.

LOC		DIST		REVISIONS			
P	LTR	DESCRIPTION		DATE	DWN	APVD	
CM	00	C1		REVISED PER ECO-11-015731	03AUG11	HMR	SM

1 MATERIAL: CONNECTOR - NYLON UL94V-2 (YELLOW).
 CONTACTS - 0.00076[.000030] GOLD THK OR 0.00008[.000003] MIN THK
 GOLD FLASH OVER 0.00068[.000027] THK PALLADIUM NICKEL,
 PER TE CONNECTIVITY'S DISCRETION, IN
 CONTACT AREA WITH BRIGHT TIN-LEAD FOR
 644663-2 THRU 1-644663-2, MATTE WHISKER
 MITIGATED TIN FOR 3-644663-2 THRU
 4-644663-2 OVER NICKEL UNDERPLATE.

2. CONTACTS ACCEPT 20 AWG WIRE WITH 2.41[.095] MAX
 INSULATION DIAMETER.

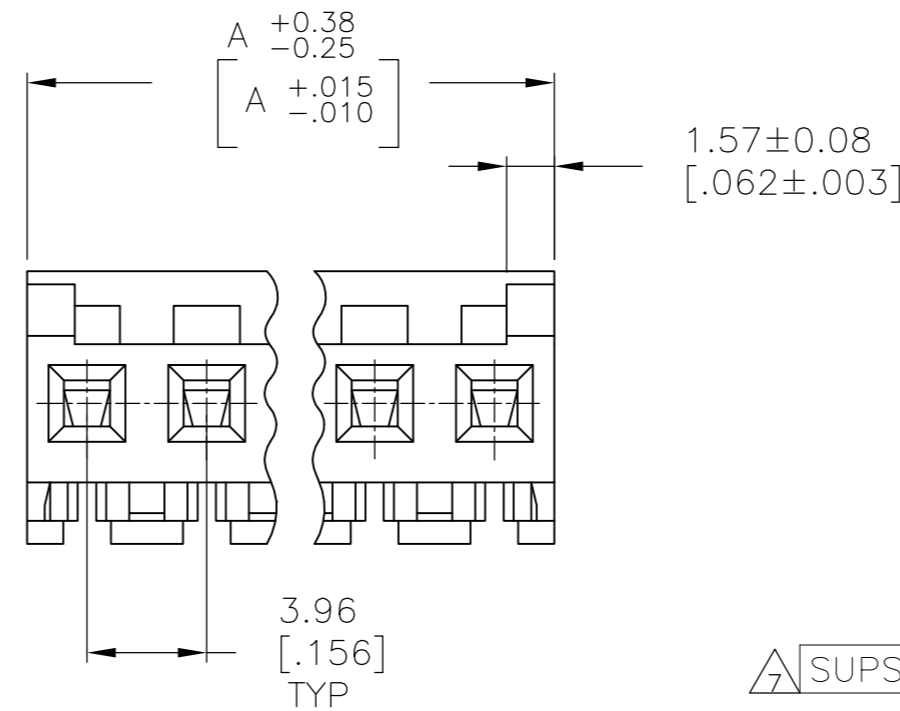
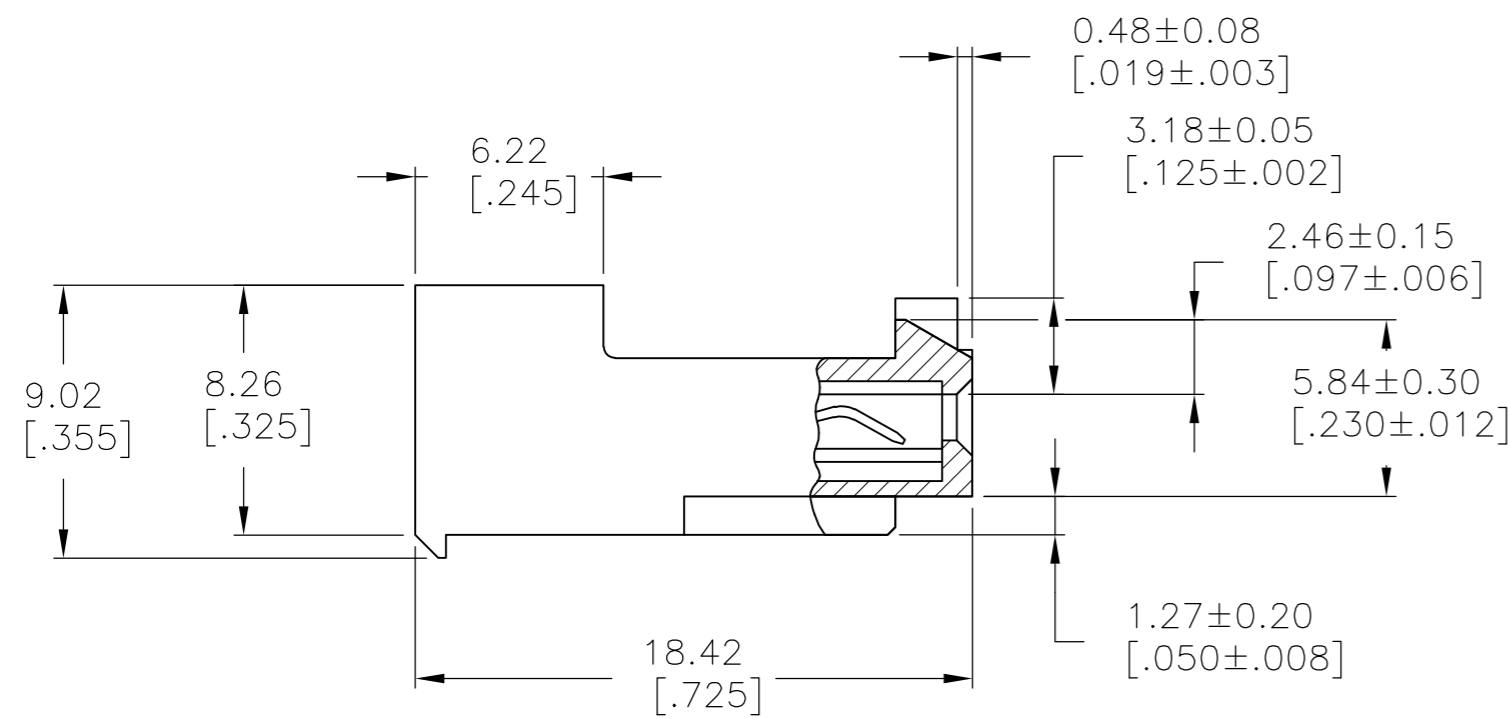
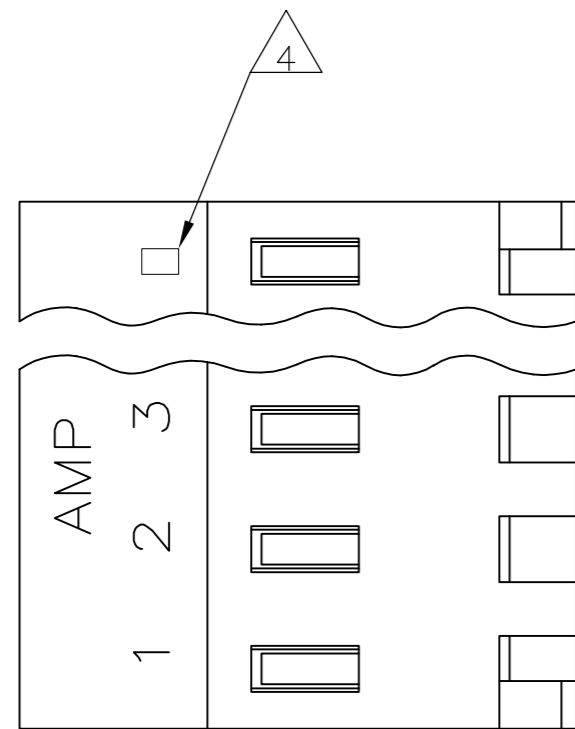
3. CONTACTS MUST ACCEPT 1.14±0.03[.045±.001]
 POST AND REMAIN LOCKED IN POSITION.

4 IDENTIFICATION NUMBER FOR LAST CIRCUIT MAY
 NOT APPEAR ON ALL ASSEMBLIES.

5. DIMENSIONS IN BRACKETS ARE IN INCHES.

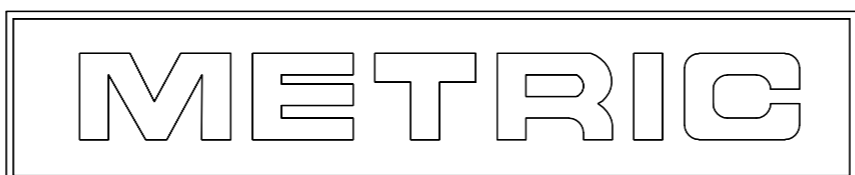
6. HOUSING FEATURES ARE: CLOSED END WITH LOCKING
 RAMP AND POLARIZING TAB.

7 OBSOLETE PARTS: OBSOLETE CIS STREAMLINING PER D.RENAUD/D.SINISI



47.55 [1.872]	12	4-644663-2	
43.59 [1.716]	11	4-644663-1	
39.62 [1.560]	10	4-644663-0	
35.66 [1.404]	9	3-644663-9	
31.70 [1.248]	8	3-644663-8	
27.74 [1.092]	7	3-644663-7	
23.77 [.936]	6	3-644663-6	
19.81 [.780]	5	3-644663-5	
15.85 [.624]	4	3-644663-4	
11.89 [.468]	3	3-644663-3	
7.92 [.312]	2	3-644663-2	
47.55 [1.872]	12	1-644663-2	
43.59 [1.716]	11	1-644663-1	
39.62 [1.560]	10	1-644663-0	
35.66 [1.404]	9	644663-9	
31.70 [1.248]	8	644663-8	
27.74 [1.092]	7	644663-7	
23.77 [.936]	6	644663-6	
19.81 [.780]	5	644663-5	
15.85 [.624]	4	644663-4	
11.89 [.468]	3	644663-3	
7.92 [.312]	2	644663-2	
7.92 [.312]	2	644663-2	
DIM A		NO OF CIRCUITS	PART NO

7 SUPSD BY 4-644663-1
 7 SUPSD BY 3-644663-9
 7 SUPSD BY 3-644663-7
 7 SUPSD BY 3-644663-6
 7 SUPSD BY 3-644663-5
 7 SUPSD BY 3-644663-2



THIS DRAWING IS A CONTROLLED DOCUMENT.

DIMENSIONS: mm [INCHES]	TOLERANCES UNLESS OTHERWISE SPECIFIED: 0 PLC ± - 1 PLC ± - 2 PLC ± - 3 PLC ± - 4 PLC ± - ANGLES ± - FINISH	DWN D. SOLOMON 09 JAN 92 CHK R. SWING 09 JAN 92 APVD T. WERT 09 JAN 92 PRODUCT SPEC 108-1051 APPLICATION SPEC 114-1020 WEIGHT -	NAME TE Connectivity MTA 156 CONNECTOR ASSEMBLY, 20 AWG, STANDARD
MATERIAL 1	FINISH 1	SCALE A2 00779 C=644663	RESTRICTED TO -

CUSTOMER DRAWING SCALE 4:1 SHEET 1 OF 1 REV C1