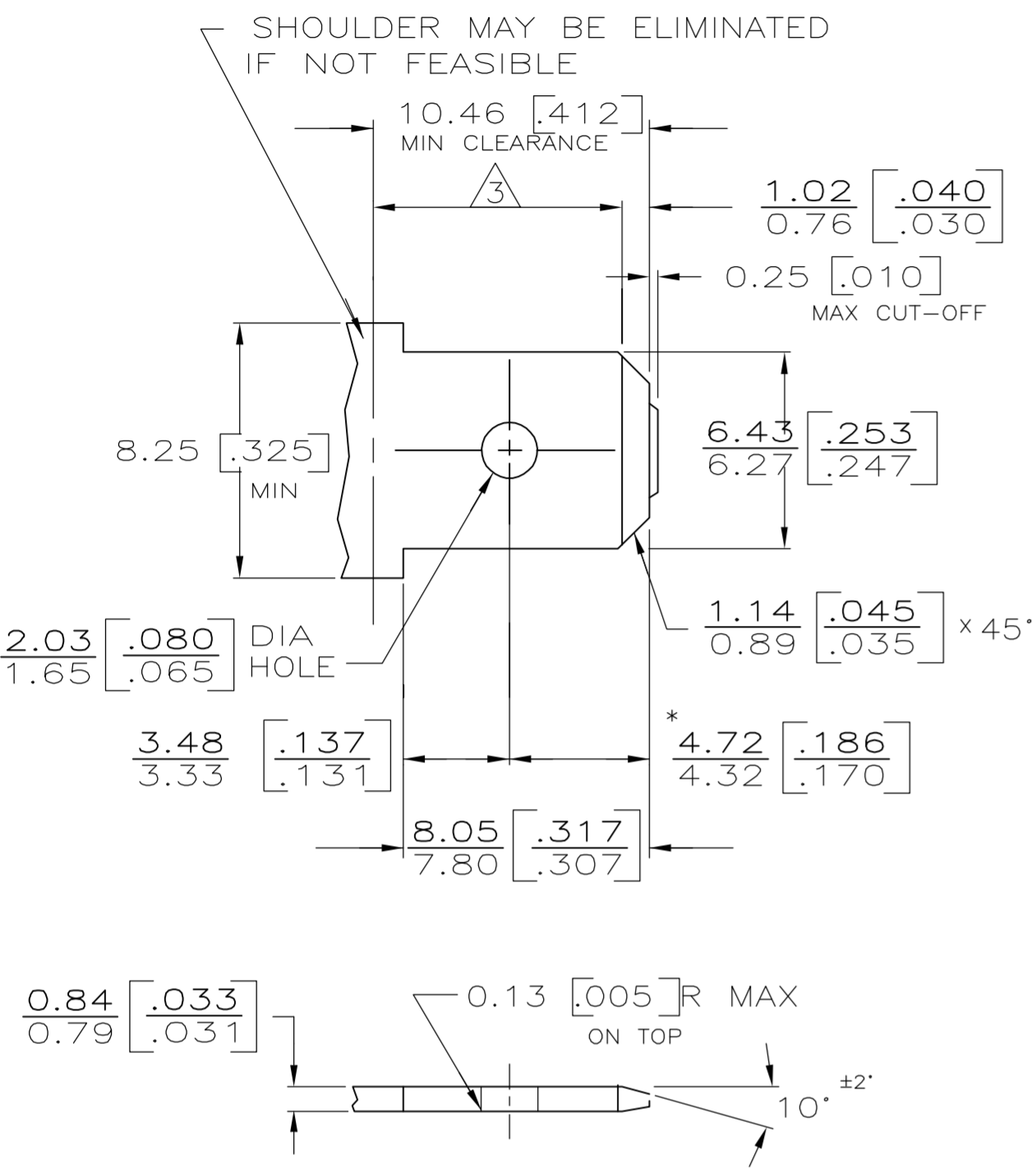
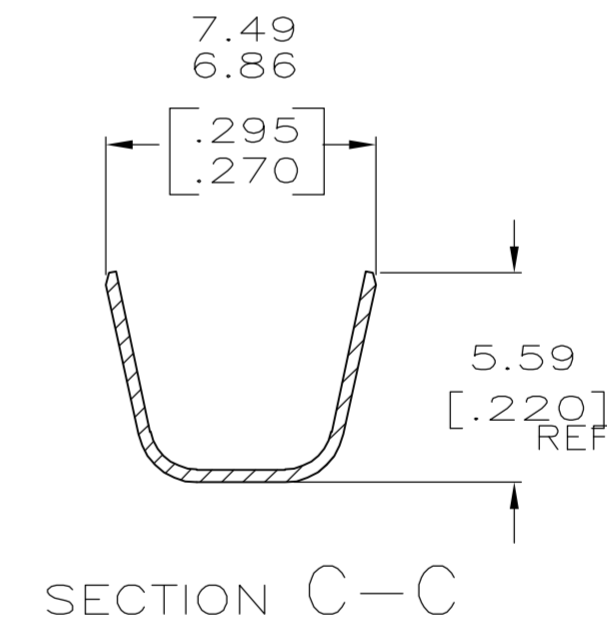
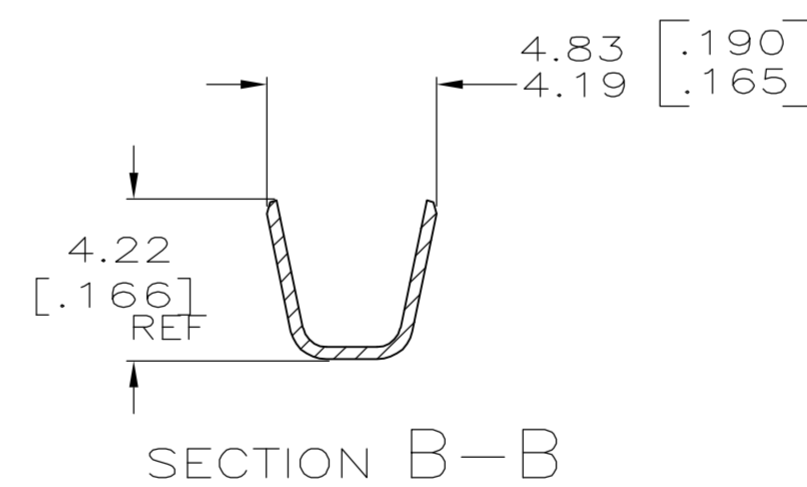
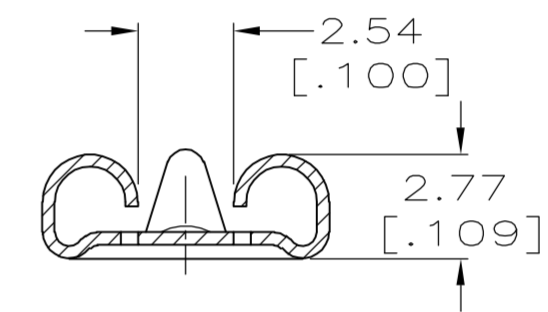
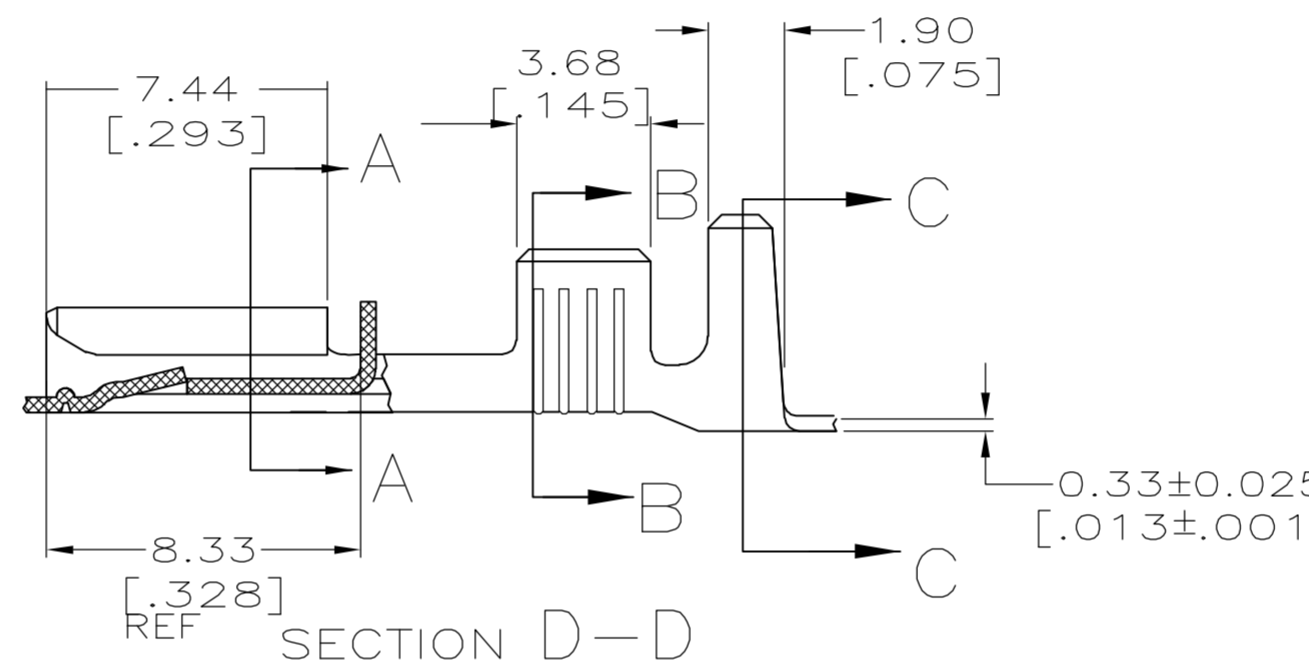
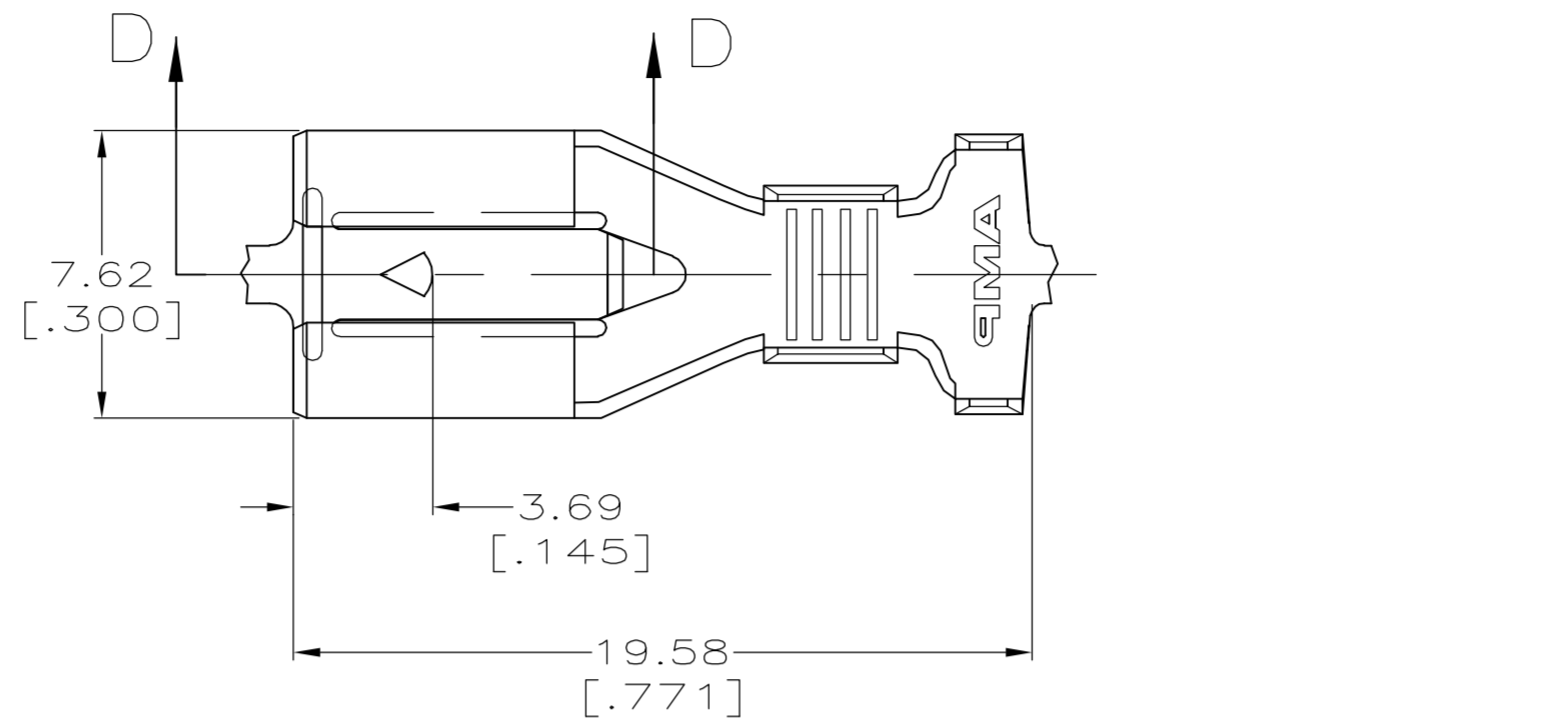


| LOC | DIST | REVISIONS | | | | | |
|-----|------|-----------|-----|-----------------------|---------|-----|------|
| | | P | LTR | DESCRIPTION | DATE | DWN | APVD |
| AF | 50 | B1 | | REL PER ECR 05-015812 | 15FEB06 | JR | RL |

SUGGESTED MATING TAB



- 1 - MATL: 1/2H BRASS OR NICKEL PL STEEL.
 - 2 - NO BURRS PERMISSIBLE AT HOLE.
 - 3 - MUST BE FLAT WITHIN 0.076 [.003] OVER THIS LENGTH.
 - 4 - TIN PLATING IS REQUIRED ON BRASS WHEN TERMINAL TEMP. IS OVER 225°F.
 - 5 - HOLE MUST BE SYMMETRICAL ABOUT TAB Q WITHIN 0.076 [.003]
- * TO BE USED ONLY WHEN SHOULDER IS ELIMINATED.



- 1 CONTINUOUS STRIP ON REELS.
- 2 ACCEPTS [#16-#12] SINGLE WIRE SIZES AND COMBINATIONS OF TWO[#16'S] OR TWO[#18'S] OR ONE[#16 WITH ONE#18]. WIRE CRIMP WIDTH IS .140, F TYPE
- 3 FITS INSULATION RANGE 3.05-4.32 [.120-.170] DIA OR TWO AT 3.05 [.120] MAX. INSULATION CRIMP WIDTH .240 F TYPE

| | |
|----------------------------|-----------|
| TIN 0.002032 [.000080] MIN | 1217095-2 |
| - | 1217095-1 |
| FINISH | PART NO |

| | | | | | | | | | | | | | | | | |
|--|---------------|-----------|-------------|------------------|---|-----|-------|---------------|-------|-----|-------|-----|--------|-----|--------------|---|
| THIS DRAWING IS A CONTROLLED DOCUMENT. | | DWN | JR RUTH | 6/19/98 | Tyco Electronics Corporation Harrisburg, PA 17105-3608 | | | | | | | | | | | |
| DIMENSIONS: mm[INCHES] | | CHK | MS FEHER | 6/19/98 | | | | | | | | | | | | |
| TOLERANCES UNLESS OTHERWISE SPECIFIED: | | APVD | J GILLESPIE | 6/19/98 | | | | | | | | | | | | |
| <table border="1"> <tr><td>0 PLC</td><td>± -</td></tr> <tr><td>1 PLC</td><td>± -</td></tr> <tr><td>2 PLC</td><td>± 0.25 [.010]</td></tr> <tr><td>3 PLC</td><td>± -</td></tr> <tr><td>4 PLC</td><td>± -</td></tr> <tr><td>ANGLES</td><td>± -</td></tr> </table> | | 0 PLC | ± - | 1 PLC | | ± - | 2 PLC | ± 0.25 [.010] | 3 PLC | ± - | 4 PLC | ± - | ANGLES | ± - | PRODUCT SPEC | - |
| 0 PLC | ± - | | | | | | | | | | | | | | | |
| 1 PLC | ± - | | | | | | | | | | | | | | | |
| 2 PLC | ± 0.25 [.010] | | | | | | | | | | | | | | | |
| 3 PLC | ± - | | | | | | | | | | | | | | | |
| 4 PLC | ± - | | | | | | | | | | | | | | | |
| ANGLES | ± - | | | | | | | | | | | | | | | |
| MATERIAL | H06 BRASS | FINISH | SEE TABLE | APPLICATION SPEC | 114-2074 | | | | | | | | | | | |
| WEIGHT | | - | | SIZE | A2 | | | | | | | | | | | |
| CUSTOMER DRAWING | | SCALE 5:1 | | CAGE CODE | 00779 | | | | | | | | | | | |
| DRAWING NO | | C=1217095 | | DRAWING NO | 1217095 | | | | | | | | | | | |
| RESTRICTED TO | | - | | SHEET | 1 of 1 | | | | | | | | | | | |
| REV | | B1 | | | | | | | | | | | | | | |