

TE CONNECTIVITY (TE)

# CST-100 II HOUSING 3 POS

CST | CST

1375820-3

TE Internal Number: 1375820-3

Always EU RoHS/ELV Compliant

Centerline **2.54 mm [ .1 in ]**

Number of Positions **3**

Number of Rows **1**

Mating Retention **With**

Mating Retention Type **Latch**

Active

PRODUCT DRAWING  
English

3D PDF

## Product Drawings

[HOUSING, CST-100 II](#)

PDF  
English

## CAD Files

[Customer View Model](#)

2D\_DXF.ZIP  
English

[Customer View Model](#)

3D\_IGS.ZIP  
English

[Customer View Model](#)

3D\_STP.ZIP  
English

[3D PDF](#)

PDF  
English

## Product Specifications

Product Specification

[CST-100 Type II .100 Inch Centerline Crimp-Snap Connectors](#)

PDF  
English

Application Specification

[CST-100 Type II .100 Inch Centerline Crimp-Snap Connectors](#)

PDF  
English

[CST-100 II Connectors](#)

PDF  
English

Engineering Report

[Evaluation Of .100 Inch Centerline Type II Crimp-Snap Terminal](#)

TIF  
English

[Evaluation Of .100 Inch Centerline Type II Crimp-Snap Terminal](#)

PDF  
English

## Product Environmental Compliance

TE Material Declaration

[MD\\_1375820-3\\_072320142120\\_dmtec](#)

PDF  
English

---

## Instruction Sheets

Instruction Sheet (U.S.)

[Extracting CST-100 II Contact 1375819-\[\] From Housing 1375820-\[\]](#)  
PDF  
English

Please review product documents or [contact us](#) for the latest agency approval information. Please Note: Use the Product Drawing for all design activity.

---

Product Type Features	Glow Wire Rating	<b>Standard Part - Not Glow Wire</b>
	Sealed	<b>No</b>
	Connector Type	<b>Housing</b>
	Applies To	<b>Wire/Cable</b>
	Connector Style	<b>Receptacle</b>
	Connector System	<b>Wire-to-Wire</b>
	Strain Relief	<b>Without</b>
	Product Type	<b>Connector</b>

---

Configuration Features	Number of Positions	<b>3</b>
	Number of Rows	<b>1</b>

---

Electrical Characteristics	Operating Voltage	<b>250 VAC</b>
----------------------------	-------------------	----------------

---

Contact Features	Contact Type	<b>Socket</b>
	Contact Current Rating (A)	<b>7</b>
	Contact Layout	<b>Inline</b>

---

Termination Features	Termination Method to Wire/Cable	<b>Crimp</b>
----------------------	----------------------------------	--------------

---

Mechanical Attachment	Mating Retention	<b>With</b>
	Mating Retention Type	<b>Latch</b>
	PCB Mount Retention	<b>Without</b>
	Mating Connector Lock	<b>Without</b>
	Panel Mount Retention	<b>Without</b>
	Mating Alignment	<b>With</b>
	Contact Retention	<b>Without</b>
	PCB Mount Alignment	<b>Without</b>
	Mating Alignment Type	<b>Polarizing Tab</b>


Housing Features	Centerline	<b>2.54 mm [ .1 in ]</b>
	Housing Color	<b>Natural</b>
	Housing Material	<b>Nylon - GF</b>
Dimensions	Height	<b>6.6 mm [ .26 in ]</b>
	Length	<b>8.13 mm [ .32 in ]</b>
	Wire/Cable Size (AWG)	<b>26 – 22</b>
	Wire/Cable Size (mm <sup>2</sup> )	<b>.13 – .33</b>
Usage Conditions	Operating Temperature Range	<b>-55 – 105 °C [ -67 – 221 °F ]</b>
Operation/Application	For Use With	<b>Mates with Specified MTA .100 Headers, Similar Competitive Notched Headers &amp; CST .100 Shrouded Headers</b>
Industry Standards	CSA File Number	<b>LR 7189</b>
	Agency/Standard	<b>CSA, UL</b>
	UL File Number	<b>E28476</b>
	UL Rating	<b>Recognized</b>
	UL Flammability Rating	<b>UL 94V-0</b>
	CSA Rating	<b>Certified</b>
Packaging Features	Packaging Quantity	<b>1</b>
	Packaging Method	<b>Package</b>
Other	Comment	<b>Accepts Rec Contact p/n 1375819 &amp; MTA-100 Keying Plug P/N 641994-1, Not interchangeable with CST-100 contacts and housings.</b>

Product Compliance

[Statement of Compliance](#)  
PDF

[VIEW ALL PRODUCT COMPLIANCE](#)

## CUSTOMERS ALSO BOUGHT

<p><b>WIRE-TO-BOARD CONNECTOR CONTACTS</b></p> 	<p><b>WIRE-TO-BOARD CONNECTOR CONTACTS</b></p> 	<p><b>STANDARD EDGE CONNECTORS</b></p> 	<p><b>WIRE-TO-BOARD CONNECTOR HOUSINGS</b></p> 
--	--	--	--

<p>CST-100 II CONTACT TIN PLT 1375819-1</p> <p><a href="#">Save to List</a></p> <p><a href="#">Find Similar Products</a></p>	<p>LOOSE PC CONTACT TIN PLATED 1445336-1</p> <p><a href="#">Save to List</a></p> <p><a href="#">Find Similar Products</a></p>	<p>AMP DUOPLUG MK2 CONNECTOR 6P 3-1534796-6</p> <p><a href="#">Save to List</a></p> <p><a href="#">Find Similar Products</a></p>	<p>CST-100 II HOUSING 4 POS 1375820-4</p> <p><a href="#">Save to List</a></p> <p><a href="#">Find Similar Products</a></p>
--	---	--	--

Products - 43 Results

[View All](#)

[Compare 0/10](#)

Relation Type ▼

RELATIONSHIP

**Mating Products**

Used to identify Mating Parts

[See All Mating Products](#)

PRODUCT - MATING PRODUCTS



Connectors - W-T-B Headers & Receptacles  
MTA | MTA-100

**03P MTA100 STR HDR  
RETENTIVE - 3-644695-3**

TE INTERNAL NUMBER: 3-644695-3

✓ Active

Always EU RoHS/ELV Compliant

Centerline **2.54 mm**

Number of Positions **3**

PCB Mounting Orientation

**Vertical**

Number of Rows **1**

Contact Mating Area Plating

Material **Tin**

RELATIONSHIP

**Mating Products**

Used to identify Mating Parts

[See All Mating Products](#)

PRODUCT - MATING PRODUCTS



Connectors - W-T-B Headers & Receptacles  
CST | CST

**03P CST100 SHRD HDR  
ASSY LF - 3-644898-3**

TE INTERNAL NUMBER: 3-644898-3

✓ Active

Always EU RoHS/ELV Compliant

Centerline **2.54 mm**

Number of Positions **3**

PCB Mounting Orientation **Right**

**Angle**

Number of Rows **1**

Contact Mating Area Plating

Material **Gold**

RELATIONSHIP

**Mating Products**

Used to identify Mating Parts

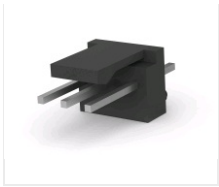
[See All Mating Products](#)

PRODUCT - MATING PRODUCTS



Connectors - W-T-B Headers & Receptacles

Always EU RoHS/ELV Compliant



Connectors - w/ I-D headers & receptacles  
MTA | MTA-100

## 03P MTA100 HDR ASSY F/L LF - 3-647609-3

TE INTERNAL NUMBER: 3-647609-3

✓ Active

Always EU RoHS/ELV Compliant

Centerline **2.54 mm**

Number of Positions **3**

PCB Mounting Orientation

**Vertical**

PCB Mounting Style **Through  
Hole**

Number of Rows **1**