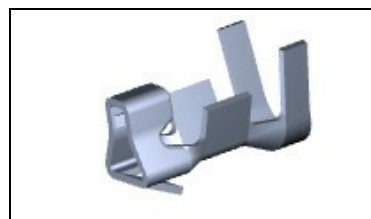




1376476-1 Product Details

[Share](#) [Print](#) [Email](#)


1376476-1

2.5mm Signal Mate Connectors

Always EU RoHS/ELV Compliant (Statement of Compliance)

Product Highlights:

- 2.5mm Signal Mate Product Line
- Wire-to-Wire
- Contact
- Contact Type = Receptacle
- Crimp Termination Method to Wire/Cable

[View all Features](#)

Quick Links

- ▶ [Pricing & Availability](#)
- ▶ [Search for Tooling](#)
- ▶ [Product Feature Selector](#)
- ▶ [Contact Us About This Product](#)

TE Internal Number: 1376476-1

Active

[Add to My Part List](#) [Request Sample](#) [Find Similar Products](#) [Buy Product](#)

Documentation & Additional Information

Documents are temporarily unavailable. We are working hard to correct the problem. Please try again later.

Additional Information:

- [Product Line Information](#)

Additional Product Images:

- [Line Drawing](#)

Related Products:

- [Tooling](#)

Product Features (Please use the Product Drawing for all design activity)

Product Type Features:

- Product Line = 2.5mm Signal Mate
- Product Type = Contact
- Wire/Cable Type = Discrete Wire
- Sealed = No

Electrical Characteristics:

- Contact - Rated Current (A) = 2.5
- Operating Voltage Reference = AC/DC
- Operating Voltage (VAC) = 50
- Operating Voltage (VDC) = 50

Termination Features:

- Termination Method to Wire/Cable = Crimp
- Wire/Cable Size (mm²) = 0.12 - 0.38
- Wire/Cable Size (AWG) = 22 - 24

Body Features:

- Wire Type = Stranded

Contact Features:

- Contact Type = Receptacle
- Contact Base Material = Phosphor Bronze
- Contact Plating, Mating Area, Material = Pre-Tin
- Contact Plating, Mating Area, Thickness (µm [µin]) = 0.8 - 1.4 [31.49 - 55.12]

Industry Standards:

- [RoHS/ELV Compliance](#) = RoHS compliant, ELV compliant
- [Lead Free Solder Processes](#) = Not relevant for lead free process
- RoHS/ELV Compliance History = Always was RoHS compliant

Environmental:

- Operating Temperature (°C [°F]) = -30 - +105 [-22 - +221]

Conditions for Usage:

- Accepts Wire Insulation Diameter, Range (mm [in]) = 1.20 - 1.90 [0.047 - 0.074]
- For Use With = Housing

Operation/Application:

- Application Use = Wire-to-Wire
- Contact Transmits (Typical Application) = Signal (Data)

Packaging Features:

- Packaging Method = Reel
- Packaging Quantity = 8000

Other:

- Brand = AMP

Feedback

Corporate Information

- [About TE](#)
- [Investors](#)
- [News Room](#)
- [Supplier Portal](#)
- [Careers](#)
- [Terms & Conditions](#)
- [Privacy Policy](#)
- [AODA Accessibility Policy](#)

Quick Links

- [Distributor Inventory](#)
- [Product Cross Reference](#)
- [Documents & Drawings](#)
- [Product Compliance Support Center](#)
- [Site Map](#)

Customer Support

- [Email or Chat With Us](#)
- [Find a Phone Number](#)
- [Knowledge Base](#)
- [Manage Your Account](#)

Keep Me Informed



